



Color Manual

2010

www.sherwin-automotive.com

Acura
Audi
BMW
Honda
Hyundai
Infiniti
Jaguar
Kia
Land Rover
Lexus
Maybach
Mazda
Mercedes-Benz
Mini
Mitsubishi
Nissan
Porsche
Saab
Scion
Smart
Subaru
Suzuki
Toyota
Volkswagen
Volvo

2010

Using this Book to Locate a Formula

Step 1
Locate color code



668
BC
Jet Black

FormulaExpress™

Quick Search

OEM Color Code

668

Search by Exterior Code

[Advanced Search](#)

Formula Number

Chip Number

Step 2
Type the color code into
FormulaExpress™

Step 3
Choose the record
best matching the
manufacturer, code,
color name and year of
the vehicle needed.

Main Menu → [Search By Vehicle](#) → **Select Formula** → Select Quality → Select Alternates → Formula Details

Vehicle Part: MFG: [Show Model's](#)

OEM Color Code: 668 Exterior Code:

There are 8 records

MFG	Exterior Code	Accent Code	Vehicle Part	Color Name	Year(s)
BMW	668		Exterior	Black	91 - 93
BMW	668		Exterior	Jet Black	94 - 09
BMW	668		Exterior	Schwarz li	06 - 08
Chevrolet	668		Exterior	Russet Brown	55 - 55
GMC	668		Exterior	Russet Brown	55 - 55
Isuzu	668		Exterior	Purplish Blue	02 - 02

Step 4
Mix the Color!

INDEX

Locate A Formula Inside Front Cover

Acura	5-7
Audi	46-50
BMW	3-5
Honda	5-7
Hyundai	7-10
Infiniti.....	28-32
Jaguar.....	11-12
Kia.....	12-14
Land Rover.....	15-16
Lexus	41-46
Maybach	17
Mazda	18-23
Mercedes-Benz	24-25
Mini	3-5
Mitsubishi.....	26-28
Nissan.....	28-32
Porsche	33-34
Saab.....	34-35
Smart	36
Scion.....	41-46
Subaru	36-38
Suzuki.....	39-41
Toyota.....	41-46
Volkswagen.....	46-50
Volvo.....	51-52

Color Code Locations Inside Back Cover

Based on information received from Car Manufacturers, the data contained herein is presumed to be correct. However, we cannot assume responsibility for error or change. These color chips are intended for identification purposes only. They are only representative of the colors and cannot be considered as color standards.

2010 CAR COLORS

BMW/MINI

BMW / MINI

			
300 BC Alpine White III	354 BC Titanium Silver Met	381 BC Lemans Blue Met	405 BC Imola Red
			
416 BC Carbon Black Met	440 BC Stratus Gray Met	475 BC Black Sapphire Met	668 BC Jet Black
			
851 BC Chili Red	857 BC Nightfire Red Met	871 BC Dark Silver Met	895 BC British Racing Green Met
			
900 BC Pure Silver Met	902 BC Liquid Yellow	A13 BC Atlantic Blue Met	A14 BC Mineral Silver Met
			
A25 BC Astro Black Met	A26 BC Hot Orange Met	A27 BC Cool Blue Met	A29 BC Silverstone II Met
			
A31 BC Indianapolis Red Met	A32 BC Sepang Bronze Met	A35 BC Monaco Blue Met	A39 BC Barbera Red Met
			
A51 BC Montego Blue Met	A52 BC Space Gray Met	A53 BC Platinum Bronze Met	A58 BC Mellow Yellow
			
A60 BC Sparkling Silver Met	A61 BC Crimson Red	A63 BC Lightning Blue Met	A67 BC British Racing Green Met
			
A68 BC Platinum Gray Met			

2010 CAR COLORS

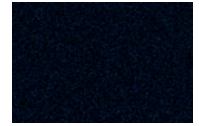
BMW/MINI (Cont'd.)



A70
BC
Mineral Green Met



A72
BC
Cashmere Silver Met



A73
BC
Jerez Black Met



A74
BC
Oxygen Blue



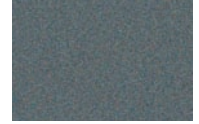
A75
BC
Melbourne Red Met



A76
BC
Deep Sea Blue Met



A79
BC
Sedona Red Met



A81
BC
Tasman Met



A82
BC
Vermillion Red Met



A84
BC
Milano beige Met



A85
BC
Neptune Blue Met



A88
BC
Hot Chocolate Met



A89
BC
Imperial Blue Pearl



A90
BC
Sophistograu Met



A92
BC
Orion Silver Met



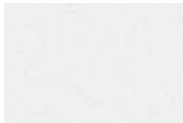
A93
BC
Horizon Blue Met



A94
BC
Midnight Black Met



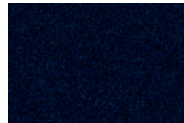
A95
BC
Interchange Yellow



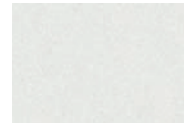
A96
3 Stage
Mineral White Pearl



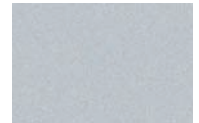
B05
BC
Monte Carlo Blue Met



S34
BC
Azurite Black Met



U21
3 Stage
Brilliant Weiss Met



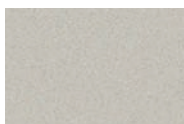
X01
BC
Perilsilber Met



X02
BC
Citruschwarz Met

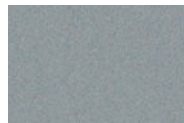


X03
BC
Ruby Black Met



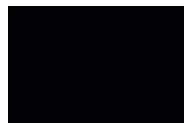
X04
BC
Moonstone Met

Bumper /Fascia

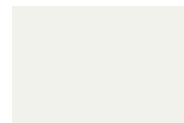


426
Graphitan Met

Mini Roof / Mirror



668
BC
Jet Black



899
BC
Aspen White

2010 CAR COLORS

BMW/MINI (Cont'd.)

Wheel



A54
BC
Bright Silver Met

Underhood: BMW models may use specific color-keyed primer or exterior base color only.

Model Year Designation (10th character of VIN number)	
Code	Year
A	2010
9	2009
8	2008
7	2007
6	2006
5	2005
4	2004
3	2003
2	2002
1	2001
Y	2000
X	1999

Assembly Plant Codes (11th character of VIN number)	
Plant Code	Plant
A, F or K	Munich, Germany
B, C, D	Dingolfing, Germany
L	Spartanburg, South Carolina
N	Roslyn, South Africa
E, P	Regensburg, Germany
V	Leipzig, Germany
W	Graz, Austria

HONDA/ACURA



B530M
BC
Ocean Mist Met



B532P
BC
Opulent Blue Pearl



B536P
BC
Royal Blue Pearl



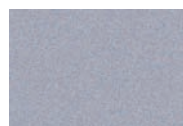
B537M
BC
Atomic Blue Met



B538M
BC
Glacier Blue Met



B548P
BC
Blue Sensation Pearl



B549M
BC
Tidewater Blue Met



B551P
BC
Belize Blue Pearl



B552P
BC
Bali Blue Pearl



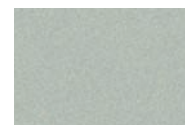
B553P
BC
Vortex Blue Pearl



B559P
BC
Borealis Blue Pearl



B561P
BC
Dyno Blue Pearl



B562P
BC
Omni Blue Pearl



B563M
BC
Aozora Blue Met

B/C-Basecoat/Clearcoat Color.
These colors are intended to be used only as a reference, and may not be exact representations of mixed or applied color.

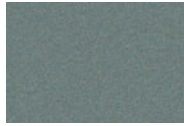
2010 CAR COLORS

HONDA/ACURA (Cont'd.)

HONDA / ACURA



BG53M
BC
Brilliant Sky Met



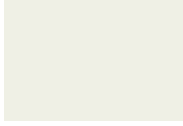
G530M
BC
Mystic Green Met



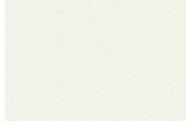
G532M
BC
Opal Sage Met



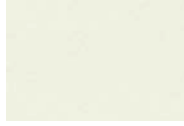
GY26P
BC
Premium Night
Desert Gold



NH578
BC
Taffeta White



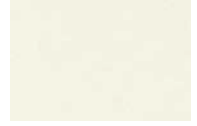
NH603P
3 Stage
White Diamond Pearl



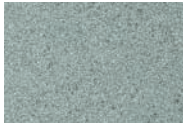
NH624P
3 Stage
Premium White Pearl



NH642M
BC
Storm Silver Met



NH677P
3 Stage
Aspen White Pearl



NH679M
BC
Slate Green Met



NH684P
BC
Magnetic Pearl



NH700M
BC
Alabaster Silver Met



NH717P
3 Stage
Alberta White Pearl



NH727M
BC
Platinum Frost Met



NH731P
BC
Crystal Black Pearl



NH736M
BC
Grigio Met



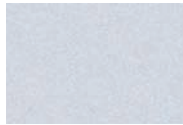
NH737M
BC
Polished Metal Met



NH743M
BC
Palladium Met



NH750M
BC
Silver Jade Met



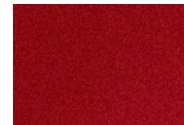
NH756P
3 Stage
Spectrum White
Pearl



PB83P
BC
Blackberry Pearl



R513
BC
Rallye Red



R525P
BC
Tango Red Pearl



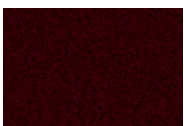
R529P
BC
Dark Cherry Pearl



R530P
BC
Basque Red Pearl



R537M
3 Stage
Star Garnet Met



R538P
BC
Midnight Red Pearl



R539P
BC
Passion Red Pearl



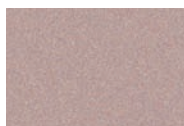
R81
BC
Milano Red



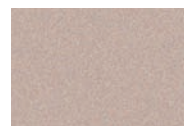
R94
BC
San Marino Red



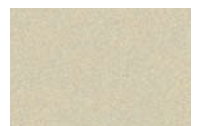
YR569M
BC
Mayan Bronze Met



YR573M
BC
Mocha Met



YR574M
BC
Bold Beige Met



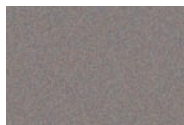
YR575M
BC
Tuscan Beige Met



YR576M
BC
Orange Revolution
Met



YR577P
BC
Redline Orange Pearl



YR578M
BC
Urban Titanium Met



YR579M
BC
Citrus Fire Met



YR580M
BC
Ionized Bronze Met

B/C-Basecoat/Clearcoat Color.

These colors are intended to be used only as a reference, and may not be exact representations of mixed or applied color.

2010 CAR COLORS

HONDA/ACURA (Cont'd.)



YR582P
BC
Premium Hidamari
Ivory Pearl

Grille

(For Colors not shown in this section refer to EXTERIOR section)

Underhood: Honda and Acura models may use tinted primers or the exterior base color with or without clear.

Model Year Designation (10th character of VIN number)	
Code	Year
A	2010
9	2009
8	2008
7	2007
6	2006
5	2005
4	2004
3	2003
2	2002
1	2001
Y	2000
X	1999

Assembly Plant Codes (11th character of VIN number)	
Plant Code	Plant
A	Marysville, Ohio
B	Lincoln, Alabama
C	Sayama, Japan
E	Greensburg, Indiana
G	El Salto, Mexico
H	Alliston, Ontario
L	East Liberty, Ohio
S	Suzuka, Japan



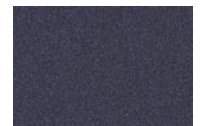
1F
BC
Berry Red Met



2B
BC
Ice Blue Met



2E
BC
Dark Gray Met



2M
BC
Charcoal Gray Mica



2R
BC
Quicksilver Met



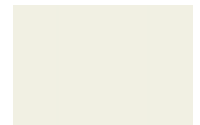
2X
BC
Regatta Blue Pearl



2Z
BC
Black Pearl Mica



3E
BC
Dark Sapphire Blue
Mica



3M
BC
Stone White



3W
BC
Mellow Yellow



5J
BC
Superior Red Met



5Q
BC
Deep Blue Mica



5R
BC
Wine Red Mica



5S
BC
Platinum Silver Mica

B/C-Basecoat/Clearcoat Color.
These colors are intended to be used only as a reference, and may not be exact representations of mixed or applied color.

2010 CAR COLORS



(Cont'd.)



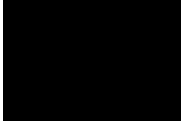
9F
BC
Black Pearl



9G
BC
Sand Beige Met



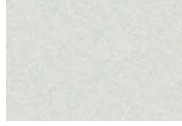
9W
BC
Laguna Sand Met



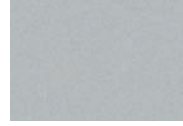
AA
BC
Black Onyx Pearl



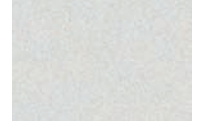
AF
BC
Black Noir Pearl



AJ
BC
3 Stage
Ivory Pearl



AT
BC
3 Stage
White Satin Pearl



AU
BC
Platinum Met



BF
BC
Slate Blue Met



BH
BC
Electric Red



BR
BC
Mystic Blue Pearl



BV
BC
Vivid Blue Met



DJ
BC
Crimson Red Pearl



DR
BC
Dark Cherry Red Met



DS
BC
Willow Gray Met



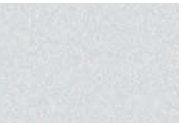
DY
BC
Silky Beige Met



EB
BC
Ebony Black



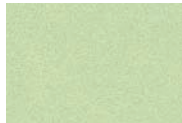
F1
BC
Ebony Black



FG
BC
Sleek Silver Met



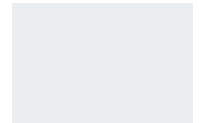
FR
BC
Black Diamond Met



G8
BC
Apple Green Met



GP
BC
Natural Khaki Met



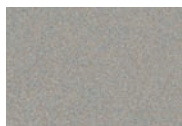
GT
BC
Crystal White



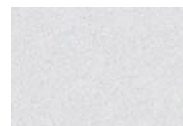
HL
BC
Bright Red



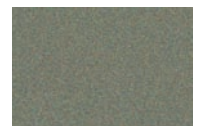
JA
BC
Chilipepper Red



JP
BC
Smoky Gray Pearl



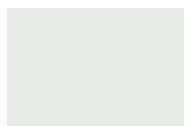
JR
BC
3 Stage
White Pearl



MBK
BC
Natural Khaki Met



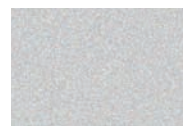
N8
BC
Tango Red Met



NAA
BC
Ceramic White



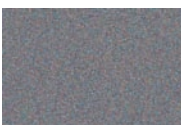
NBA
BC
Space Black Met



NCA
BC
Sleek Silver Met



ND
BC
Apple Red Pearl



NDA
BC
Gray Titanium Met



NEA
BC
Blue Diamond Met



NFA
BC
Dynamic Yellow



NGA
BC
Super Red



NHA
BC
Blue Sapphire Met

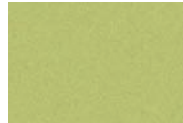
B/C-Basecoat/Clearcoat Color.

These colors are intended to be used only as a reference, and may not be exact representations of mixed or applied color.

2010 CAR COLORS



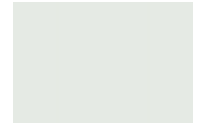
(Cont'd.)



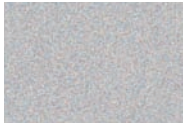
NJA
BC
Lime Green Met



NKA
BC
Black Noir Pearl



NW
BC
Nordic White



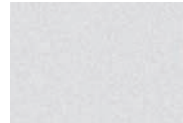
NY
BC
Titanium Gray Met



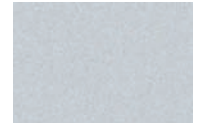
PM
BC
Sterling Blue Met



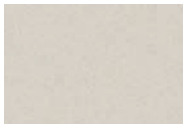
S3B
BC
Black Noir Pearl



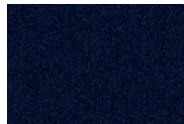
SLS
BC
Liquid Silver Met



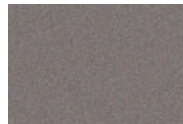
SM
BC
Radiant Silver Met



SV
BC
Camel Beige Pearl



TB
BC
Sapphire Blue Pearl



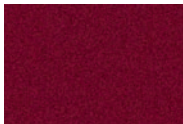
TFP
BC
Chai Bronze Met



TGY
BC
Iris Blue Mica



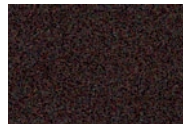
TK
BC
Electric Green Met



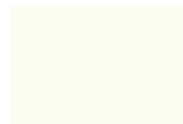
TZ
BC
Cabernet Red Pearl



U6
BC
Sparkle Blue Met



VK
BC
Cocoa Met



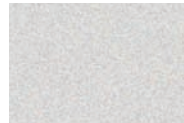
WAB
BC
Cotton White



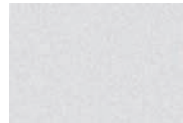
WG
BC
Med Silver Blue Met



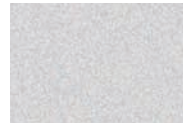
WJX
BC
Graphite Gray Met



WK
BC
Champagne Silver Met



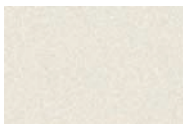
X2
BC
Liquid Silver Met



Y5
BC
Silver Frost Met



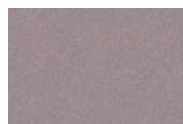
ZG
BC
Ice Blue Met



ZT
BC
Champagne Beige Met

Bumper/Fascia/Cladding

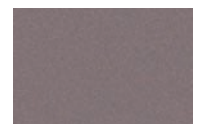
(For Colors not shown in this section refer to EXTERIOR section)



2Q
Premium Gray Met



BW
BC
Platinum Green Met



GF
Dark Gray



HC
BC
Cool Gray Met

B/C-Basecoat/Clearcoat Color.

These colors are intended to be used only as a reference, and may not be exact representations of mixed or applied color.

2010 CAR COLORS



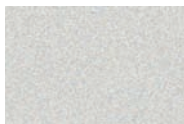
(Cont'd.)

Grille



XK
Matte Black

Accent



PK
Light Silver Met



XK
Matte Black

Underhood: Hyundai models use light or dark gray primer or tint to approximate exterior base color.



DGU
Dark Gray



LGU
Light Gray

Model Year Designation (10th character of VIN number)	
Code	Year
A	2010
9	2009
8	2008
7	2007
6	2006
5	2005
4	2004
3	2003
2	2002
1	2001
Y	2000
X	1999

Assembly Plant Codes (11th character of VIN number)	
Plant Code	Plant
A	Asan, Korea
H	Montgomery, AL
U	Ulsan, Korea
6	Sohari, Korea

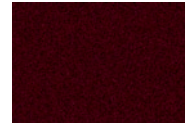
2010 CAR COLORS



CHA
BC
Salsa Red



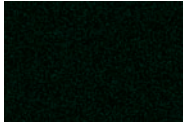
CHN
BC
Claret Met



CHP
BC
Caviar Met



GDR
BC
Cashmere Gold Met



HHN
BC
Botanical Green Met



JJX
BC
Indigo Met



JJZ
BC
Frost Blue Met



JKM
BC
Spectrum Blue Met



JMQ
BC
Kyanite Blue Pearl



LJZ
BC
Lunar Gray Met



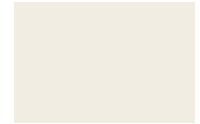
LMN
BC
Pearl Gray Met



LMO
BC
Vapour Gray Met



MEE
BC
Liquid Silver Met



NEL
BC
Porcelain White

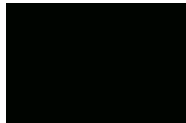


PEC
BC
Ebony Black



PEL
BC
Ultimate Black Met

Underhood



JUC20
Black



JUC54
Blue Prism



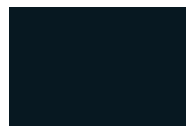
JUC61
Salsa Red



JUC62
Burgundy



JUC85
Wintergold



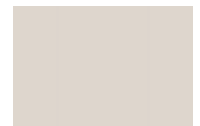
JUC86
Blue



JUC87
Zermatt



JUC97
Lunar Gray



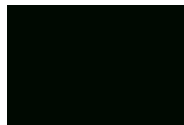
JUC98
Porcelain



JUC99
Frost Blue



JUC101
Pearl Gray



JUC103
Botanical Green



JUC106
Vapour Gray

2010 CAR COLORS



(Cont'd.)

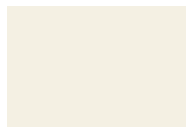
Jaguar Exterior / Underhood Compatibility	
Exterior Code	Underhood Code
CHA	JUC61
CHN	JUC62
CHP	JUC20
GDR	JUC85
HHN	JUC103
JJX	JUC86
JJZ	JUC99
JKM	JUC86

Jaguar Exterior / Underhood Compatibility	
Exterior Code	Underhood Code
JMQ	JUC54
LJZ	JUC97
LMN	JUC101
LMO	JUC106
MEE	JUC87
NEL	JUC98
PEC	JUC20
PEL	JUC20

Model Year Designation (10th character of VIN number)	
Code	Year
A	2010
9	2009
8	2008
7	2007
6	2006
5	2005
4	2004
3	2003
2	2002
1	2001
Y	2000
X	1999

Assembly Plant Codes (11th character of VIN number)	
Plant Code	Plant
H, L, M	Castle Bromwich, England

KIA



1D
BC
Clear White



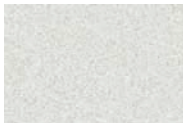
1E
BC
Molten



1H
BC
Ghost



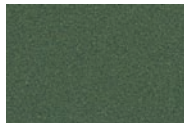
1U
BC
Urban Gray Met



3D
BC
Bright Silver Met



3H
BC
Volcanic Red Met



3N
BC
Ivy Green Met



3P
BC
Volcanic Red Met



5P
BC
Dark Red Wine Met

B/C-Basecoat/Clearcoat Color.

These colors are intended to be used only as a reference, and may not be exact representations of mixed or applied color.

2010 CAR COLORS

KIA (Cont'd.)

KIA



6C
BC
Clear Silver Met



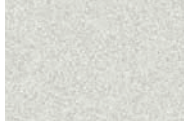
6D
BC
Smokey Brown Met



6K
BC
Deep Ocean Blue Met



7P
BC
Claret Red Met



7S
BC
Fine Silver Met



7V
BC
Olive Gray Met



8V
BC
Midnight Gray Met



9B
BC
Midnight Black Met



9H
BC
Shadow Met



9P
BC
Black Cherry Met



A1
BC
Dune



A5
BC
Aqua Blue Met



DO
BC
Bronze Met



DRR
BC
Racing Red



EB
BC
Ebony Black



H5
BC
Java Met



HO
BC
Corsa Blue Pearl



I2
BC
Denim Met



I7
BC
Alien Met



IM
BC
Titanium Silver Met



IR
BC
Dark Cherry Met



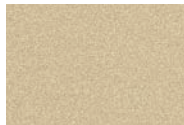
IY
BC
Spicy Red Met



J4
BC
Cashmere Beige Met



J6
BC
Light Almond Beige Met



J9
BC
Sunset Gold Met



K5
BC
Velvet Blue Met



K6
BC
Smart Blue Met



K9
BC
Glacier Blue Met



MBA
BC
Muscle Beige Met



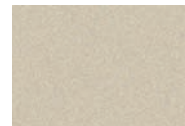
O6
BC
Sunset Orange Met



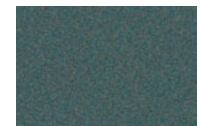
O8
BC
Tropical Red Met



O9
BC
Copperhead Met



OK
BC
Gold Leaf Met



OL
BC
Verdant Green Met



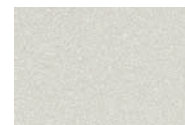
P6
BC
Charming Ruby Red Met



QG
BC
Inky Blue Pearl



S4
BC
Steel Silver Met



S6
BC
Satin Silver Met



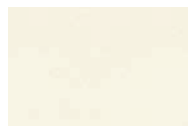
T5
BC
Sapphire Blue Met

B/C-Basecoat/Clearcoat Color

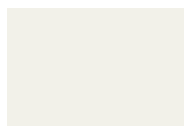
These colors are intended to be used only as a reference, and may not be exact representations of mixed or applied color.

2010 CAR COLORS

KIA (Cont'd.)



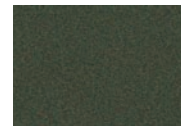
U4
3 Stage
Pearl White



UD
BC
Clear White



XMB
BC
Blue Jean Pearl



XMK
BC
Khaki Pearl



Y1
BC
Cocktail Orange Met

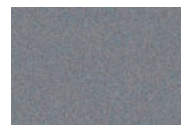
Underhood: Kia models use exterior base color with or without clearcoat.

Bumper / Fascia / Cladding

(For Colors not shown in this section refer to EXTERIOR section)



9T
BC
Dark Gray Met



WF
Pewter Gray Met

Model Year Designation (10th character of VIN number)	
Code	Year
A	2010
9	2009
8	2008
7	2007
6	2006
5	2005
4	2004
3	2003
2	2002
1	2001
Y	2000
X	1999

Assembly Plant Codes (11th character of VIN number)	
Plant Code	Plant
5	Hwasung, Korea
6	Sohari, Korea
7	Kwangju, Korea
T	Seosan, Korea

2010 CAR COLORS



AAD
BC
Bournville Met



AAJ
BC
Nara Bronze Met



CBK
BC
Rimini Red Met



GAQ
BC
Ipanema Sand Met



HAC
BC
Galway Green Met



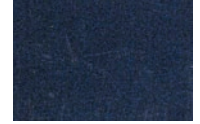
HFU
BC
Keswick Green



JBL
BC
Bali Blue Met



JCK
BC
Marmaris Teal Met



JGJ
BC
Buckingham Blue



JGL
BC
Biscay Blue Met



LEL
BC
Stornoway Gray Met



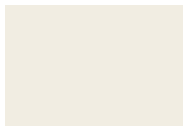
LES
BC
Lago Gray Met



MBK
BC
Zermatt Silver Met



MWE
BC
Izmir Met

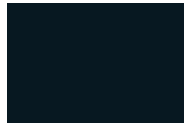


NCL
BC
Alaska White



PAB
BC
Santorini Black Met

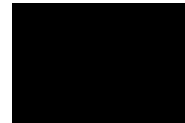
Underhood



JUC86
Indigo Blue



LRC768
Keswick Green



LRC775
Java Black



LRC804
Stornoway Gray



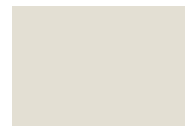
LRC805
Rimini Red



LRC806
Cairns Blue



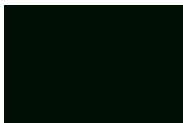
LRC812
Zermatt Silver



LRC831
Alaska White



LRC832
Izmir Blue



LRC833
Galway Green



LRC856
Nara Bronze



LRC859
Marmaris Teal

2010 CAR COLORS



Cont'd.

LAND ROVER

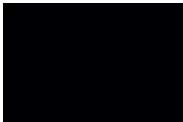


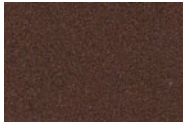

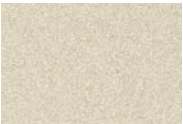

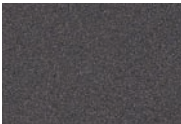
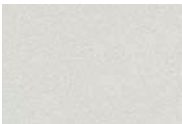

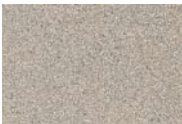
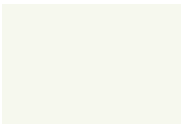


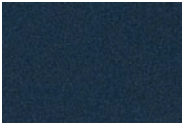


Land Rover Exterior / Underhood Compatibility	
Exterior Code	Underhood Code
AAD	LRC775
AAJ	LRC856
CBK	LRC805
GAQ	LRC812
HAC	LRC833
HFU	LRC768
JBL	LRC806
JCK	LRC859
JGJ	LRC775
JGL	JUC86
LEL	LRC804
LES	LRC804
MBK	LRC812
MWE	LRC832
NCL	LRC831
PAB	LRC775

Model Year Designation (10th character of VIN number)	
Code	Year
A	2010
9	2009
8	2008
7	2007
6	2006
5	2005
4	2004
3	2003
2	2002
1	2001
Y	2000
X	1999

Assembly Plant Codes (11th character of VIN number)	
Plant Code	Plant
A	Solihull, England
H	Halewood, England

2010 CAR COLORS

MAYBACH

			
161 BC Baltic Black	367 BC Cote D'Azur Middle Met	385 BC Cote D'Azur Bright Met	491 BC Rocky Mountain Dark Brown Met
			
588 BC Ayers Rock Red Met	697 BC Rocky Mountain Light Brown Met	721 BC Nevada Silver Met	725 BC Himalayas Gray Dark Met
			
766 BC Nayarit Silver Met	770 BC Himalayas Gray Bright Met	773 BC Tieradelfuego Bright Met	780 BC Alaska White
			
808 BC Ireland Dark Green Met	886 BC Ireland Med Green Met	947 BC Cote D'Azur Dark Met	972 BC Caspian Black Met
			
			975 BC Caspian Black Pearl

MAYBACH

Underhood: Maybach models may use specific color keyed primer or exterior base color only.

		
107 Alabasterweiss	245 Anthrazit	746 Silbergrau

Model Year Designation (10th character of VIN number)	
Code	Year
A	2010
9	2009
8	2008
7	2007
6	2006
5	2005
4	2004
3	2003

Assembly Plant Codes (11th character of VIN number)	
Plant Code	Plant
A	Sindelfingen, Germany



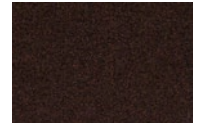
2010 CAR COLORS



16W
BC
Black Mica



27A
3 Stage
Velocity Red Mica



28W
BC
Black Cherry Mica



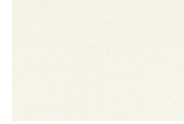
32S
BC
Galaxy Gray Mica



32V
BC
Copper Red Mica



34J
BC
Aurora Blue Mica



34K
3 Stage
Crystal White Pearl



35J
BC
Stormy Blue Mica



35N
BC
Sparkling Black Mica



36C
BC
Metropolitan Gray Met



38J
BC
Celestial Blue Met



38L
BC
Gunmetal Blue Met



38P
BC
Liquid Silver Met



38R
BC
Graphite Mica Met



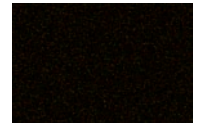
39A
BC
Aurora Blue Met



39B
BC
Passion Orange Mica



39J
BC
Bloom Pink Met



39L
BC
Spark Black Pearl



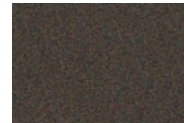
39R
BC
Lunar Gray Pearl Met



39S
BC
Breeze Blue Met



39T
BC
Dolphin Gray Mica



39Y
BC
Midnight Bronze Mica



40A
BC
Stardust Black Pearl



40B
BC
Clear Water Blue Met



A3F
BC
Brilliant Black



A4A
BC
True Red



A6Y
BC
Competition Yellow



CX
BC
Dark Shadow Gray Met



D3
BC
Volcanic Red



G2
BC
Redfire Met



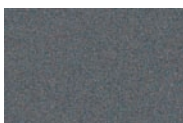
G9
BC
Vista Blue Met



HM
BC
Black Cherry Met



HP
BC
Hi Performance White



JF
BC
Comet Gray Mica



JV
BC
Sangria Red Mica



L6
BC
Kona Blue Mica



LS
BC
Blue Spark Met



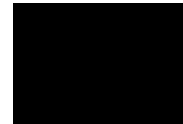
NZ
BC
Kiwi Green Met

B/C-Basecoat/Clearcoat Color.

2010 CAR COLORS



T9 36T
BC
Monterey Gray Met



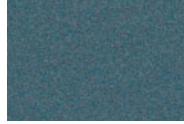
UA 14K A2X
BC
Mystic Black



UB NN
BC
Black Onyx



UI 38H
BC
Brilliant Silver Met



UN 39W
BC
Steel Blue Met



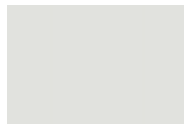
UX 39X
BC
Ingot Silver Met



WS A7A
BC
White Suede



YN 30A
BC
Silver Met



YZ 14L
BC
Oxford White

Bumper/Fascia

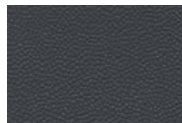
(For Colors not shown in this section refer to EXTERIOR section)



M6388G
Black

Molding/Rocker Molding

(For Colors not shown in this section refer to EXTERIOR section)



6NVA
Neutral Shadow Gray

Grille

(For Colors not shown in this section refer to EXTERIOR section)



M6388G
Black

Step Bar / Pad



M6388G
Black

Miscellaneous

(For Colors not shown in this section refer to EXTERIOR section)



M6388G
Black

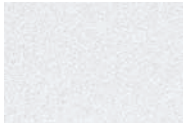
2010 CAR COLORS



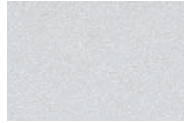
Wheel



M6389A
BC
Sparkle Silver Met



UARC
BC
Lightning Silver Met



ZJJC
Silver Met



ZJQC
BC
Silver Met

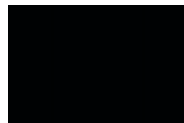
Underhood: Mazda models may use specific color keyed primer or exterior base color only.



16W
Black



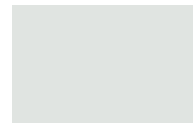
27A
Med Red



A3F
Black



A4A
True Red



M6514D
White



M6517D
Vermilion



M6518D
Taupe



M6519D
Black



M6534D
Titanium



M6579D
Smoke



M6726D
Laser Red



M6970D
Denim Blue



M6971D
Blue



M7202D
White Suede

2010 CAR COLORS



Interior

(For Colors not shown in this section refer to EXTERIOR section)



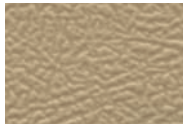
1T3A
Med Light Stone



2N4A
Med Dark Flint



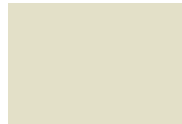
30CC
BC
Mazda Silver Met



4T1A
Camel



5B8A
Charcoal Black



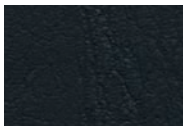
5V0A
Cashmere



6T7A
Graystone



7T8A
Dark Chocolate



JA6A
Black



ZHEA
Ebony

Model Year Designation (10th character of VIN number)	
Code	Year
A	2010
9	2009
8	2008
7	2007
6	2006
5	2005
4	2004
3	2003
2	2002
1	2001
Y	2000
X	1999

Assembly Plant Codes (11th character of VIN number)	
Plant Code	Plant
0	Ujina Plant - Hiroshima, Japan
1	Hofu Plant - Yamaguchi, Japan
5	Flat Rock, MI
K	Kansas City, MO
P	St. Paul, MN



2010 CAR COLORS

MAZDA

Mazda Color Compatibility Plan

Exterior Body Color	Model	Bumper/Fascia Molding / Rocker Molding	Grille Step Pad Miscellaneous	Wheel	Underhood	Interior
CX / 26B Dark Shadow Gray Met	B-Series Truck	Gray / CX Black / M6388G	Gray / CX / 63399 Black / M6388G	Silver / UARC Silver / ZJJC Silver / ZJQC	Gray / M6579D	Gray / 2N4A Black / JA6A Black / ZHEA
D3 / A4S Volcanic Red	B-Series Truck	Red / D3 Black / M6388G	Red / D3 Black / M6388G	Silver / UARC Silver / ZJJC Silver / ZJQC	Red / M6517D Brown / M6518D	Gray / 2N4A Black / JA6A Black / ZHEA
G2 / 25W Redfire Met	B-Series Truck	Red / G2 Black / M6388G	Red / G2 Black / M6388G	Silver / UARC Silver / ZJJC Silver / ZJQC	Red / M6726D Brown / M6518D	Gray / 2N4A Black / JA6A Black / ZHEA
G9 / 36G Vista Blue Met	B-Series Truck	Blue / G9 Black / M6388G	Blue / G9 Black / M6388G	Silver / UARC Silver / ZJJC Silver / ZJQC	Blue / M6970D Gray / M6579D	Gray / 2N4A Black / JA6A Black / ZHEA
HM / 37C Black Cherry Met	Mazda6				Black / M6519D	
HP / A2N High Performance White	Mazda6				White / M6514D	
JF / 37D Comet Gray Mica	Mazda6				Black / M6519D	
JV / 36Y Sangria Red Mica	Mazda6				Brown / M6518D	
	Tribute	Red / JV Gray / 6NVA	Black / M6388G	Silver / M6389A	Red / M6726D Brown / M6518D	Tan / 1T3A Tan / 4T1A Black / 5B8A Tan / 5V0A Gray / 6T7A Brown / 7T8A Black / JA6A Black / UA
L6 / 37B Kona Blue Mica	Mazda6				Black / M6519D	
LS / 36W Blue Spark Met	Mazda6				White / M6514D	
T9 / 36T Monterey Gray Met	Tribute	Gray / T9 Gray / 6NVA	Black / M6388G	Silver / M6389A	Black / M6519D Brown / M6518D	Tan / 1T3A Tan / 4T1A Black / 5B8A Tan / 5V0A Gray / 6T7A Brown / 7T8A Black / JA6A Black / UA
UA / A2X / 14K Mystic Black	B-Series Truck	Black / UA Black / M6388G	Black / UA Black / M6388G	Silver / UARC Silver / ZJJC Silver / ZJQC	Black / M6519D Gray / M6579D	Gray / 2N4A Black / JA6A Black / ZHEA
	Tribute	Black / UA Gray / 6NVA	Black / M6388G	Silver / M6389A	Black / M6519D Brown / M6518D	Tan / 1T3A Tan / 4T1A Black / 5B8A Tan / 5V0A Gray / 6T7A Brown / 7T8A Black / JA6A Black / UA
UB / NN Black Onyx	Mazda6				Black / M6519D	
UI / 38H Brilliant Silver Met	Mazda6				White / M6514D	

2010 CAR COLORS

MAZDA

Mazda Color Compatibility Plan (Cont'd.)						
Exterior Body Color	Model	Bumper/Fascia Molding / Rocker Molding Wheel Flares	Grille Roof Rack Step Pad Miscellaneous	Wheel	Underhood	Interior
UN / 39W Stell Blue Met	Tribute	Blue / UN Gray / 6NVA	Black / M6388G	Silver / M6389A	Blue / M6971D Brown / M6518D	Tan / 1T3A Tan / 4T1A Black / 5B8A Tan / 5V0A Gray / 6T7A Brown / 7T8A Black / JA6A Black / UA
UX / 39X Ingot Silver Met	Tribute	Silver / UX Gray / 6NVA	Black / M6388G	Silver / M6389A	Silver / M6534D Brown / M6518D	Tan / 1T3A Tan / 4T1A Black / 5B8A Tan / 5V0A Gray / 6T7A Brown / 7T8A Black / JA6A Black / UA
WS / A7A White Suede	Tribute	White / WS Gray / 6NVA	Black / M6388G	Silver / M6389A	White / M7202D Brown / M6518D	Tan / 1T3A Tan / 4T1A Black / 5B8A Tan / 5V0A Gray / 6T7A Brown / 7T8A Black / JA6A Black / UA
YN / 30A Silver Met	B-Series Truck	Silver / YN Black / M6388G	Silver / YN Black / M6388G	Silver / UARC Silver / ZJC Silver / ZJQC	Silver / M6534D White / M6514D	Gray / 2N4A Black / JA6A Black / ZHEA
YZ / 14L Oxford White	B-Series Truck	White / YZ Black / M6388G	White / YZ Black / M6388G	Silver / UARC Silver / ZJC Silver / ZJQC	White / M6514D	Gray / 2N4A Black / JA6A Black / ZHEA

2010 CAR COLORS

MERCEDES-BENZ



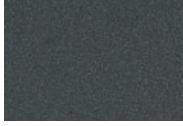
001
BC
Covelline Blue Met



002
BC
Casiterite Black Met



040
BC
Black



041
BC
Designo Graphite Met



051
BC
Designo Magno Platin Met



112
BC
Majestic Black Met



158
BC
Galaxite Black Met



191
BC
Cosmos Black Met



197
BC
Obsidian Black Met



230
BC
Indigolite Blue Met



240
BC
Lotus Blue Met



300
BC
Jade Green Met



349
BC
Alpine Rain Met



359
BC
Capri Blue Met



368
BC
Flint Gray Met



391
BC
Horizon Blue Met



430
BC
Prehnite Green Met



434
BC
Zirkonrot Met



474
BC
Peridot Brown Met



478
BC
Delta Green Met



490
BC
Steppe Brown Met



492
BC
Rutil Brown Met



494
BC
Titanium Gray Met



497
BC
Cupritbraun Met



501
BC
Amazonite Blue Met



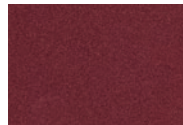
502
BC
Digenite Blue Met



526
BC
Dolomite Brown Met



541
BC
Storm Red Met



544
BC
Barolo Red Met



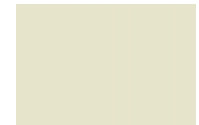
589
BC
Jupiter Red



590
BC
Fire Opal



601
BC
Fayalite Green Met



650
BC
Calcite White



696
BC
Night Black



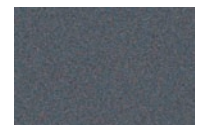
701
BC
Antimony Gray Met



703
BC
Osminum Gray Met



704
BC
Coronadite Gray Met



710
BC
Palladium Gray Met

B/C-Basecoat/Clearcoat Color.

These colors are intended to be used only as a reference, and may not be exact representations of mixed or applied color.

2010 CAR COLORS

MERCEDES-BENZ (Cont'd.)



755
BC
Steel Gray Met



761
BC
Polar Silver Met



775
BC
Iridium Silver Met



779
BC
Alabandine Gray Met



786
BC
Stannite Gray Met



787
BC
Mountain Gray Met



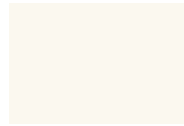
792
BC
Palladium Silver Met



794
BC
Pearl Beige Met



798
BC
Sand Beige Met



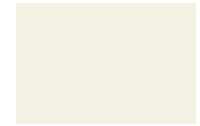
799
3 Stage
Diamond White Pearl



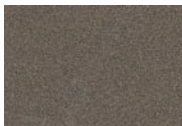
901
BC
Pure Black



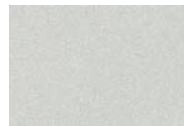
903
BC
Picotite Black Met



960
BC
Pure White



963
BC
Indium Gray Met



977
BC
Laurite Silver Met

Underhood: Mercedes-Benz models use exterior base color only

Model Year Designation (10th character of VIN number)	
Code	Year
A	2010
9	2009
8	2008
7	2007
6	2006
5	2005
4	2004
3	2003
2	2002
1	2001
Y	2000
X	1999

Assembly Plant Codes (11th character of VIN number)	
Plant Code	Plant
A	Vance, Alabama
A, B, C or D	Sindelfingen, Germany
F, G or H	Bremen, Germany
J	Rastatt, Germany
T	Karmann, Germany
X	Graz, Austria
E	Juiz de Fora, Brazil
R	E. London, So. Africa



2010 CAR COLORS



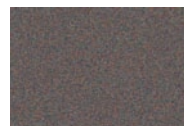
A31
BC
Apex Silver Met



A39
BC
Graphite Gray Pearl



A88
BC
Satin Meisai Pearl



C06
BC
Quartz Brown Met



D06
BC
Octane Blue Pearl



D08
BC
Maizen Blue Pearl



D14
BC
Cosmic Blue Met



M03
BC
Sunset Pearl



M08
BC
Rotor Glow Met



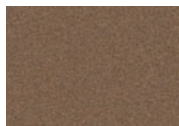
P26
BC
Rally Red Met



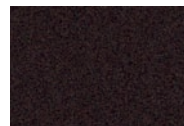
P36
BC
Rave Red Pearl



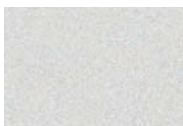
P39
BC
Red Pearl



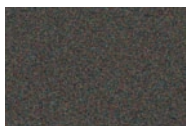
S32
BC
Canyon Beige Pearl



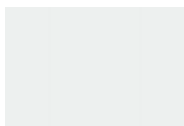
U02
BC
Phantom Black Pearl



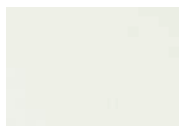
U04
BC
Quick Silver Pearl



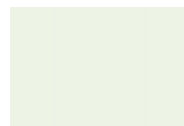
U09
BC
Carbon Pearl



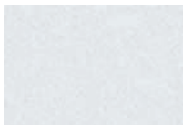
W12
BC
Northstar White



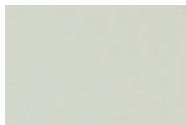
W13
3 Stage
Diamond White Pearl



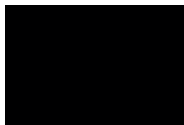
W37
BC
Wicked White



W55
3 Stage
White Pearl



W69
3 Stage
Dover White Pearl



X13
BC
Kalapana Black



X42
BC
Tarmac Black Pearl



Y19
BC
Solar



Y21
BC
Yellow

Molding

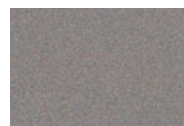
(For colors not shown in this section refer to EXTERIOR section)



CZB18001
BC
Ocean Blue Met



CZB18002
BC
Race Blue Pearl



CZY18001
BC
Sunset Beach Met



CZY18002
BC
Oriental Orange Met

2010 CAR COLORS



(Cont'd.)

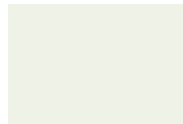
Underhood: Mitsubishi models may use specific color-keyed primer or exterior base color with or without clear.



AC10595
Gray



AC10903
Black



AC10955
White



AC11019
Brown



AC11271
Brown



CMB17005
Med Blue



CMB17009
Blue



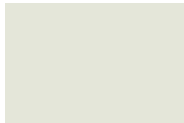
CMH17006
Dark Gray



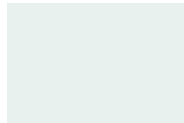
CMR17002
Red



CMR17003
Red



CMW17002
White



CMW17003
White

Mitsubishi Exterior / Underhood Compatibility

Exterior Code	Underhood Code
A31	AC10595
A39	CMB17005
A39	CMH17006
C06	AC11019
C06	AC11271
D06	CMB17009
P26	CMR17002
P26	CMR17003
W13	AC10955
W13	CMW17002
W13	CMW17003
X42	AC10903

2010 CAR COLORS



(Cont'd.)

Model Year Designation (10th character of VIN number)	
Code	Year
9	2009
8	2008
7	2007
6	2006
5	2005
4	2004
3	2003
2	2002
1	2001
Y	2000
X	1999
W	1998

Assembly Plant Codes (11th character of VIN number)	
Plant Code	Plant
E	Normal, Illinois
J	Nagoya, Japan - 3
S	Warren, Michigan
U	Mizushima, Japan
Z	Okazaki, Japan



NISSAN / INFINITI



A20
BC
Code Red



A33
BC
Crimson Roulette
Met



A54
BC
Vibrant Red



A55
BC
Orange Alloy Met



AX5
BC
Merlot Pearl



AY4
BC
Scarlet Red Met



B17
BC
Metallic Blue Line



B20
BC
Sapphire Black Pearl



B21
BC
Athens Blue Met



B23
BC
Blue Dusk Met



B30
BC
Lakeshore Slate Met



B53
BC
Indigo Blue Met



B54
BC
Azure Blue Met



C43
BC
Pebble Beach Met



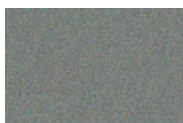
CAB
BC
Tinted Bronze Met



CAC
BC
Mojave Copper Met



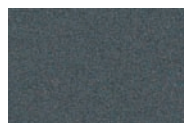
CAE
BC
Choco Glass Met



DAD
BC
Mystic Jade Met



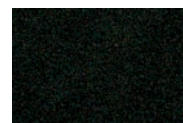
EAF
BC
Anodized Orange
Met



FAA
BC
Tidewater Met



G10
BC
Galaxy Black Met



G41
BC
Black Met

B/C-Basecoat/Clearcoat Color.

2010 CAR COLORS



NISSAN / INFINITI (Cont'd.)



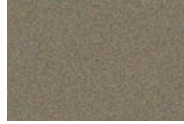
GAD
BC
Red Zone Black Met



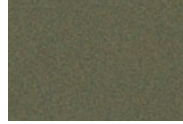
HAA
BC
Sahara Sandstone Met



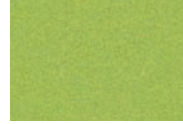
HAB
BC
Toasted Almond Met



JAA
BC
Umbria Twilight Met



JAC
BC
Moss Green Met



JAD
BC
Yellow Green Pearl



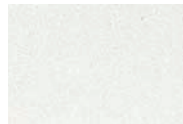
K11
BC
Smoke Met



K12
BC
Radiant Silver Met



K21
BC
Steel Gray Met



K23
BC
Liquid Platinum Met



K26
BC
Hippo Gray Met



K36
BC
Ash Met



K50
BC
Dark Slate Met



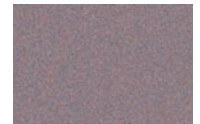
K51
BC
Gray Met



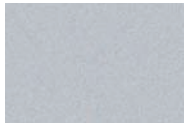
K52
BC
Dark Gray Met



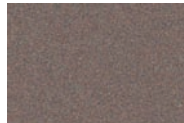
K55
BC
Iridium Graphite Met



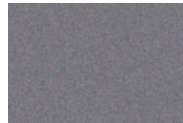
K57
BC
Amethyst Graphite Met



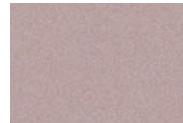
KAB/BKAB
3 Stage
Midcoat available in
Factory Package Only
Super Silver Met



KAC
BC
Desert Shadow Met



KAD
BC
Gray Met



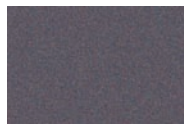
KAG
BC
Scarlet Silver Met



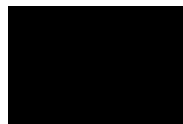
KAH
BC
Saharan Stone Met



KAS
BC
Purplish Silver Met



KAV
BC
Gray Met



KH3
BC
Black Obsidian



KY0
BC
Chrome Silver Met



L50
BC
Bitter Chocolate Pearl



NAB
BC
Midnight Garnet Met



NAC
BC
Carmine Red Met



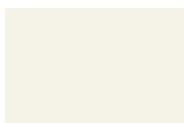
NAD
BC
Sonoma Sunset Met



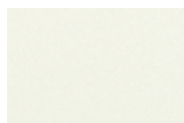
NAE
BC
Midnight Mocha Met



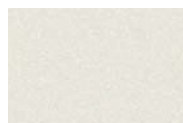
NAG
BC
Black Cherry Pearl



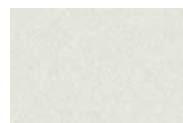
Q10
BC
Nordic White



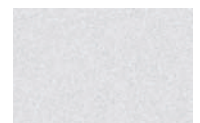
Q11
3 Stage
Nordic White Pearl



QAA
3 Stage
Moonlight White Pearl



QAB
3 Stage
White Pearl



QAC
3 Stage
Visual Pearl

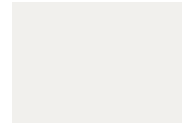
B/C-Basecoat/Clearcoat Color.

These colors are intended to be used only as a reference, and may not be exact representations of mixed or applied color.

2010 CAR COLORS



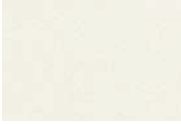
NISSAN / INFINITI (Cont'd.)



QM1
Cloud White



QX1
3 Stage
Ivory Pearl



QX3
3 Stage
Satin White Pearl



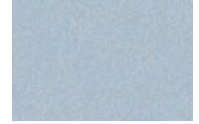
RAA
BC
Deep Sapphire Met



RAB
BC
Deep Blue Met



RAE
BC
Monterey Blue Pearl



RAF
BC
Arctic Blue Met



RAH
BC
Caribbean Blue Met



RAJ
BC
Blue Met



RAP
BC
Metal Fish Met

Underhood: Nissan / Infiniti models may use specific color-keyed primer or exterior base color with or without clear.



A01W1
Red



A01W2
Red



A02T2
Red



A02W2
Red



A03M1
Red



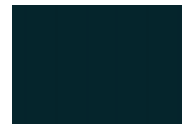
A03W2
Red



A08U1
Red



A08U2
Red



B01M1
Dark Blue



B01W2
Blue



B04M1
Blue



B08U1
Blue



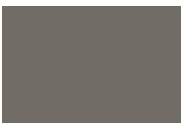
B08U2
Blue



B08U3
Bright Blue



C01M1
Brown



C08U2
Beige



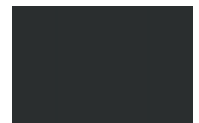
C08U3
Beige



K01M1
Black



K01M2
Black



K01N1
Black

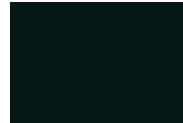
B/C-Basecoat/Clearcoat Color.

These colors are intended to be used only as a reference, and may not be exact representations of mixed or applied color.

2010 CAR COLORS



NISSAN / INFINITI (Cont'd.)



K01T2
Black



K01W2
Black



K02M2
Black



K02N1
Gray



K02T2
Gray



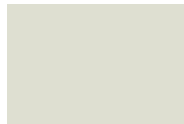
K02W2
Gray



K03M1
Gray



K03W2
Gray



K04W2
White



K06M1
Dark Gray



K07M2
Gray



K08M2
White



K08U1
Gray



K08U2
Charcoal



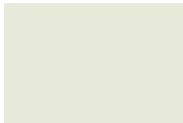
K08U3
Gray



K08U4
Charcoal



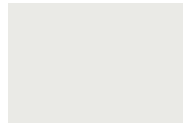
K09U1
Gray



Q01T1
White



Q08U1
White



Q08U2
White

NISSAN / INFINITI

Model Year Designation (10th character of VIN number)

Code	Year
A	2010
9	2009
8	2008
7	2007
6	2006
5	2005
4	2004
3	2003
2	2002
1	2001
Y	2000
X	1999

Assembly Plant Codes (11th character of VIN number)

Plant Code	Plant
4	Aichi, Japan
5	Murayama, Japan
9	Fujijyu, Japan
C	Smyrna, Tennessee
L	Aguascalientes, Mexico
M	Tochigi, Japan
N	Canton, Mississippi
T	Oppama, Japan
U	Zama, Japan
W	Kyushyu, Japan
X	Nissha-Hiratsuka, Japan

2010 CAR COLORS



NISSAN / INFINITI (Cont'd.)

Underhood (Cont'd.)

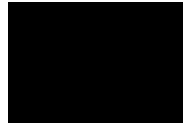
Nissan / Infiniti Exterior / Underhood Compatibility

Exterior Code	Underhood Code
A20	A08U1
A20	A08U2
A33	A02W2
A54	A03M1
A55	A03W2
AX5	A01W1
AX5	A01W2
AY4	A02T2
B21	B04M1
B30	B01M1
B30	C08U2
B53	B01W2
B54	B08U3
C43	C08U2
C43	C08U3
CAB	K02W2
DAD	K09U1
FAA	K02M2
G10	K08U2
G41	K01M2
GAD	K08U4
HAB	C08U2
HAB	C08U3
K11	K08U2
K12	K08U1
K12	K08U3
K21	K01T2
K23	K02N1
K23	K03M1
K23	K03W2
K23	K07M2
K26	K08U4
K32	C08U2
K50	B08U1
K50	B08U2
K51	K02M2

Nissan / Infiniti Exterior / Underhood Compatibility

Exterior Code	Underhood Code
K51	K02W2
K51	K07M2
K52	K01M2
K55	K01W2
K57	K03M1
KAB	K03M1
KAC	C01M1
KAD	K06M1
KAG	K07M2
KAH	K03W2
KH3	K01M1
KH3	K01M2
KH3	K01N1
KH3	K01W2
KH3	K08U2
KH3	K08U4
KY0	K02T2
L50	K01M2
L50	K01T2
NAC	A08U1
NAC	C08U3
NAD	A08U1
NAD	A08U2
NAD	C08U3
Q10	Q08U1
Q11	Q08U1
QAA	K08M2
QM1	Q08U2
QX1	K04W2
QX1	Q01T1
QX3	Q08U1
QX3	Q08U2
RAA	B01W2
RAB	B08U1
RAB	B08U2
RAP	K08U3

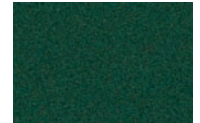
2010 CAR COLORS



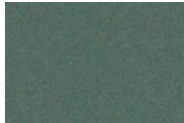
L041
BC
Black



L12H
BC
Speed Yellow



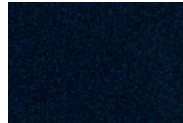
L22G
BC
Racing Green Met



L2B5
BC
Malachite Green Met



L2D8
BC
Green



L39C
BC
Midnight Blue Met



L51A
BC
Creme White



L63A
BC
Sport Classic Gray



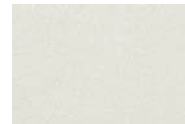
L7A1
BC
Gray Black



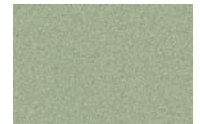
L84A
BC
Guards Red



L8C6
BC
Orange



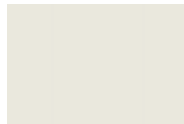
L92U
BC
Arctic Silver Met



LA6W
BC
Crystal Green Met



LA7W
BC
Crystal Silver Met



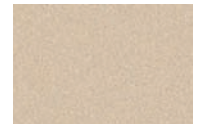
LB9A
BC
Carrara White



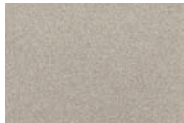
LC9Z
BC
Basalt Black Met



LD5Q
BC
Marine Blue Met



LM1T
BC
Luxor Beige Met



LM1W
BC
Jarama Beige Met



LM2Z
BC
Nordic Gold Met



LM3E
BC
GTS Red



LM3X
BC
Rubin Red Met



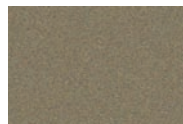
LM4Z
BC
Amethyst Met



LM5R
BC
Aqua Blue Met



LM5X
BC
Dunkel Blue Met



LM6U
BC
Olive Green Met



LM7T
BC
Platin Silver Met



LM7W
BC
Meteor Gray Met



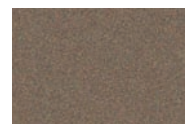
LM7X
BC
Atlas Gray Met



LM7Z
BC
GT Silver Met



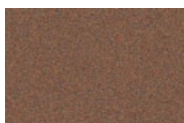
LM8W
BC
Macadamia Met



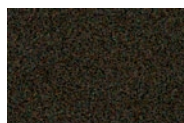
LM8X
BC
Topaz Brown Met



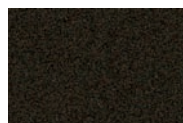
LM8Y
BC
Mahagoni Met



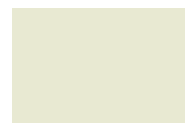
LM8Z
BC
Cognac Met



LM9Z
BC
Carbon Gray Met



LR7M
BC
Lava Gray Met



LR9A
BC
Sand White



LZ6H
BC
Jet Green Met

B/C-Basecoat/Clearcoat Color

These colors are intended to be used only as a reference, and may not be exact representations of mixed or applied color.

2010 CAR COLORS



PORSCHE

(Cont'd.)

Underhood: Porsche models use exterior base color only.

Model Year Designation (10th character of VIN number)	
Code	Year
A	2010
9	2009
8	2008
7	2007
6	2006
5	2005
4	2004
3	2003
2	2002
1	2001
Y	2000
X	1999

Assembly Plant Codes (11th character of VIN number)	
Plant Code	Plant
S	Stuttgart, Germany

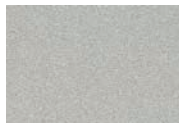
SAAB



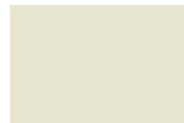
170
BC
Black



278
BC
Laser Red



279
BC
Steel Gray Met



283
BC
Polar White



290
BC
Nocturne Blue Met



298
BC
Jet Black Met



300
BC
Fusion Blue Met



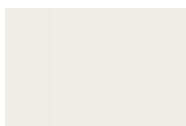
303
BC
Titan Gray Met



304
BC
Ice Blue Met



305
BC
Electric Blue Met



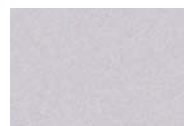
306
BC
Arctic White



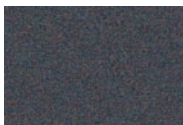
307
BC
Pepper Green Met



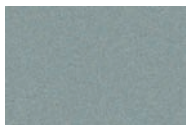
308
BC
Lynx Yellow



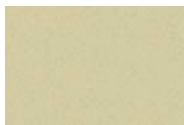
309
BC
Snow Silver Met



310
BC
Carbon Gray Met



311
BC
Glass Gray Met



312
BC
Bright Champagne Met



313
BC
Tidal Blue Met



314
BC
Oasis Blue Met

B/C-Basecoat/Clearcoat Color.

These colors are intended to be used only as a reference, and may not be exact representations of mixed or applied color.

2010 CAR COLORS

SAAB

(Cont'd.)



GHG
BC
Warm Mist Met



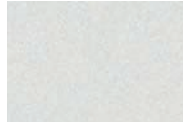
WA270M GBH
BC
Power Red



WA287L GBL
BC
Pomegranate Red Mica



WA501Q GAR
BC
Carbon Flash Met



WA636R GAN
BC
Diamond Silver Met



WA655R GAY
BC
Myth Green Pearl



WA656R GAL
BC
Carbon Gray Met



WA811S GEV
BC
Silver Lake Met



WA812S GEU
BC
Waterworld Met



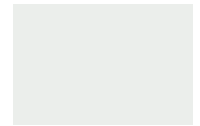
WA814S GJM
BC
Pepperdust



WA815S GJL
BC
Vivid Gandalf



WA8555 GBA
BC
Obsidian Black



WA8624 GAZ
BC
Winter White

SAAB

Underhood: SAAB models may use specific color-keyed primer or exterior base color only.

**Model Year Designation
(10th character of VIN number)**

Code	Year
A	2010
9	2009
8	2008
7	2007
6	2006
5	2005
4	2004
3	2003
2	2002
1	2001
Y	2000
X	1999

**Assembly Plant Codes
(11th character of VIN number)**

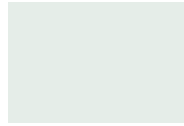
Plant Code	Plant
1 or 3	Trollhattan, Sweden
6	Graz, Austria

2010 CAR COLORS

SMART



EAD
BC
River Silver Met



EAZ
BC
Crystal White



ECA
BC
Jack Black



ECC
BC
Electric Blue Met



ECF
BC
Rally Red



ECG
BC
Gray Met

Tridion



EB1
BC
Black



EB2
BC
Silver Met

Underhood: Smart models use exterior base color with or without clearcoat.

Model Year Designation (10th character of VIN number)	
Code	Year
A	2010
9	2009
8	2008

Assembly Plant Codes (11th character of VIN number)	
Plant Code	Plant
K	Hambach, France



02C
BC
World Rally Blue Pearl



32J
BC
Obsidian Black Pearl



37J
3 Stage
Satin White Pearl



61K
BC
Dark Gray Met



64Z
BC
Newport Blue Pearl



69Z
BC
Camellia Red Pearl



A9K
BC
Harvest Gold Met

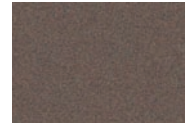


C1F
BC
Sage Green Met

2010 CAR COLORS



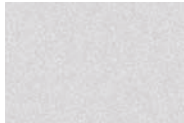
(Cont'd.)



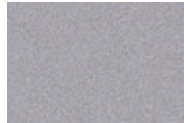
C2L
BC
Deep Bronze Met



C2Z
BC
Sunrise Yellow



C3S
BC
Spark Silver Met



C6Z
BC
Steel Silver Met



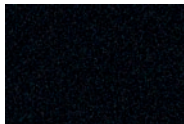
C7P
BC
Lightning Red



D1T
BC
Ruby Red Met



D2T
BC
Paprika Red Pearl



D4S
BC
Crystal Black Pearl



E4D
BC
Splash Red Pearl 2



E6A
BC
British Racing Green Pearl



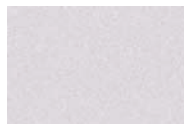
E6F
BC
Azurite Blue Pearl



E6T
BC
Light Peacock Blue Pearl



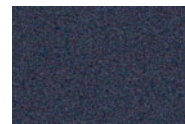
E7F
BC
Sky Blue Met



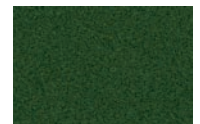
E7T
BC
Lavendar Met



E8H
BC
Galaxy Blue Met



F3T
BC
Graphite Gray Met

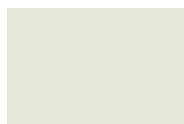


F4T
BC
Cypress Green Pearl

Underhood: Subaru models may use specific color-keyed primer or exterior base color only.



BKU
Black



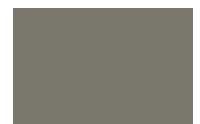
CS30
Silky White



CS3G
Light Blue



CS7V
Dark Green



CS9V
Med Gray



CS9Y
Dark Green



DBU
Dark Blue



DGU
Dark Green



DMU
Dark Maroon



DRU
Dark Red



DYU
Dark Yellow



GRU
Dark Gray



GYU
Light Gray



LGU
Light Green



MGU
Med Gray

B/C-Basecoat/Clearcoat Color.

These colors are intended to be used only as a reference, and may not be exact representations of mixed or applied color.

2010 CAR COLORS



Underhood (Cont'd.)



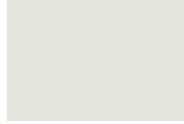
MRU
Med Red



MTU
Med Tan



SBU
Sash Black



SWU
Silky White

Wheel



AG120 AG130
BC
Silver Met



GK1
BC
Gold Met



SK1
BC
Silver Met

Lower Tu-Tone

(For colors not shown in this section refer to EXTERIOR section)

Subaru Tu-Tone Combination Codes			
Tu-Tone Code	Model	Upper Code	Lower Code
BE4	Impreza	Blue / 64Z	Silver / C6Z
CS5	Impreza	Silver / C6Z	Silver / C3S
CS6	Impreza	Black / 32J	Gray / 61K
DZ7	Impreza	Green / C1F	Silver / C6Z
DZ8	Impreza	Red / D2T	Silver / C6Z

Model Year Designation (10th character of VIN number)	
Code	Year
A	2010
9	2009
8	2008
7	2007
6	2006
5	2005
4	2004
3	2003
2	2002
1	2001
Y	2000
X	1999

Assembly Plant Codes (11th character of VIN number)	
Plant Code	Plant
3, 4, 6, 7	Lafayette, IN (SIA)
G, H, L	Gunma, Japan (FHI)

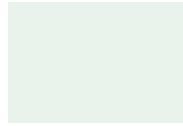
2010 CAR COLORS



SUZUKI



04U
BC
Urban Gray Met



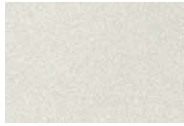
26U
Superior White



33U
BC
Sapphire Blue Met



71U
BC
Bright Red



92U
BC
Titanium Silver Met



A20
BC
Red River



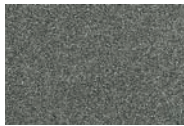
GAR
BC
Carbon Black Met



GHU
BC
Crest Blue Met



K12
BC
Liquid Metal Met



K27
BC
Granite Gray Met



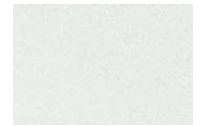
KH3
BC
Gunpowder Black



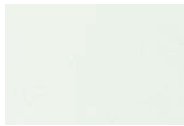
QM1
Glacier White



RAB
BC
Marine Blue Met



Z2S
BC
Quicksilver Met



Z7T
3 Stage
White Water Pearl



ZCC
BC
Silky Silver Met



ZCD
BC
Galactic Gray Met



ZCE
BC
Cosmic Black Met



ZCF
BC
Bright Red 5



ZCG
BC
Kashmir Blue II Met



ZCH
BC
Cat's Eye Blue 4 Met



ZCK
BC
Supreme Red Pearl



ZDK
BC
Sandstorm Met



ZDL
BC
Slate Gray Met



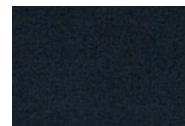
ZEL
BC
Maroon Brown Pearl



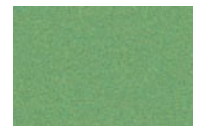
ZFM
BC
Sunlight Copper 2 Met



ZFS
BC
Sunlight Copper Met



ZJ3
BC
Black Onyx Pearl



ZJD
BC
Splash Green Met



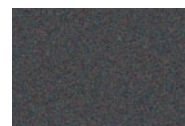
ZJP
BC
Deep Sea Blue Met



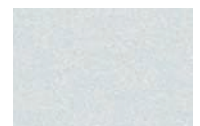
ZKC
BC
Turquoise Met



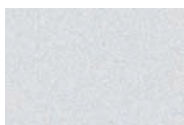
ZLB
BC
Volcano Red Pearl



ZMA
BC
Quasar Gray Met



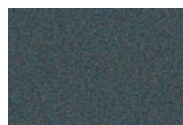
ZMT
3 Stage
Snow White Pearl



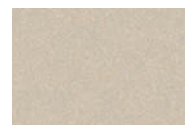
ZMU
BC
Quicksilver Met



ZMV
BC
Super Black Pearl



ZMW
BC
Azure Gray Met



ZMY
BC
Imperial Beige Met



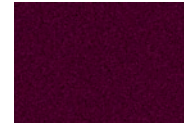
ZMZ
BC
Deep Sea Blue Met

B/C-Basecoat/Clearcoat Color.

These colors are intended to be used only as a reference, and may not be exact representations of mixed or applied color.

2010 CAR COLORS

SUZUKI (Cont'd.)



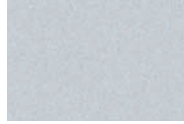
ZNA
BC
Claret Red Met



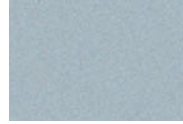
ZNB
BC
Vivid Red



ZNC
BC
Premium Silver Met



ZNL
3 Stage
White Pearl



ZPM
BC
Glacier Light Blue Met

Wheel



BKW
Black

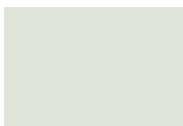


LSW
Light Silver Met



SMW
Silver Met

Underhood: Suzuki models may use specific color-keyed primer or exterior base color only.



1LC
White



A08U2
Red



B08U2
Blue



DGU
Dark Gray



K08U3
Gray



K08U4
Charcoal



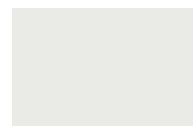
LGU
Light Gray



MGU
Med Gray



MTU
Med Tan



Q08U2
White



Z0C
Light Gray



Z26
Red



ZF1
Dark Gray

2010 CAR COLORS



SUZUKI

Suzuki Exterior / Underhood Compatibility	
Exterior Code	Underhood Code
26U	1LC
A20	A08U2
K12	K08U3
K27	K08U4
KH3	K08U4
QM1	Q08U2
RAB	B08U2
Z2S	Z0C
Z7T	1LC
ZDK	Z0C
ZDL	ZF1
ZFM	Z26
ZJ3	ZF1

Suzuki Exterior / Underhood Compatibility	
Exterior Code	Underhood Code
ZJP	ZF1
ZLB	Z26
ZMA	ZF1
ZMT	1LC
ZMU	Z0C
ZMV	ZF1
ZMW	ZF1
ZMZ	ZF1
ZNA	ZF1
ZNB	ZF1
ZNC	ZF1
ZPM	Z0C

Model Year Designation (10th character of VIN number)	
Code	Year
A	2010
9	2009
8	2008
7	2007
6	2006
5	2005
4	2004
3	2003
2	2002
1	2001
Y	2000
X	1999

Assembly Plant Codes (11th character of VIN number)	
Plant Code	Plant
4	Iwata, Japan
5	Kosai, Japan
6	Ingersoll, Ontario (CAMI)
6	Sagara, Japan
B	Bupyung, Korea
C	Smyrna, TN

TOYOTA / LEXUS / SCION

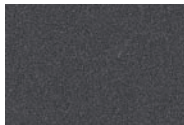
			
	040 Super White II	058 Iceberg	068 BC Polar White
			
070 3 Stage Blizzard Pearl	074 3 Stage Glacier Frost Mica	077 3 Stage Starfire Pearl	078 3 Stage Aurora White Pearl
			
1D7 BC Silver Shadow Pearl	1E0 BC Flint Mica	1E7 BC Silver Streak Mica	1F2 BC Mercury Met
			
			1D6 BC Silver Sky Met
			
			1F7 BC Classic Silver Met

B/C-Basecoat/Clearcoat Color.
These colors are intended to be used only as a reference, and may not be exact representations of mixed or applied color.

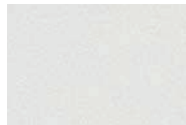
TOYOTA / LEXUS / SCION

2010 CAR COLORS

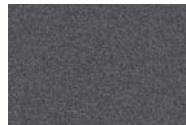
TOYOTA / LEXUS / SCION (Cont'd.)



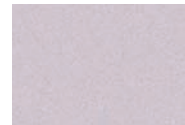
1G0
BC
Smokey Granite Mica



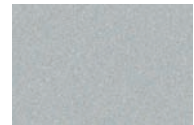
1G1
BC
Tungsten Pearl



1G3
BC
Magnetic Gray Met



1G5
3 Stage
Opaline Pearl



1G6
BC
Silver Fresco Met



1G8
BC
Twilight Gray Met



1H0
3 Stage
Moon Light Opal



1H2
BC
Dark Steel Mica



1H3
BC
Sparkle Solid Gray



1H4
BC
Ice Titanium Met



202
BC
Black



209
BC
Black Sand Pearl



212
BC
Obsidian



214
BC
Black Opal Mica



3L5
Radiant Red



3P0
BC
Absolutely Red



3Q3
BC
Salsa Red Pearl



3Q7
BC
Cassis Pearl



3Q8
BC
Carmine Red Met



3R0
BC
Sizzling Crimson Met



3R1
3 Stage
Matador Red Mica



3R3
BC
Barcelona Red Mica



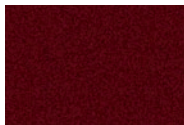
3R4
BC
Moon Shell Mica



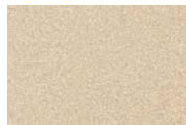
3R7
3 Stage
Noble Spinel Mica



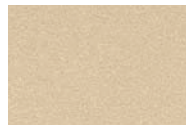
3R8
BC
Brick Red Met



3S0
BC
Garnet Red Mica



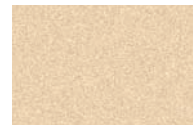
4Q2
BC
Desert Sand Mica



4R3
BC
Sonora Gold Pearl



4T0
BC
Amber Pearl



4T1
BC
Golden Almond Met



4T2
3 Stage
Tigereye Mica



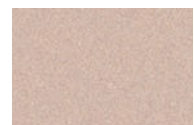
4T3
BC
Pyrite Mica



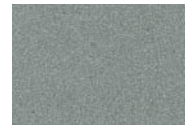
4T5
BC
Truffle Mica



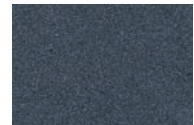
4T6
BC
Sundance Met



4T8
BC
Sandy Beach Met



1F8
BC
Meteorite Met



1F9
BC
Slate Met

2010 CAR COLORS

TOYOTA / LEXUS / SCION (Cont'd.)



4U0
BC
Sandstorm



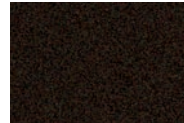
4U2
BC
Golden Umber Mica



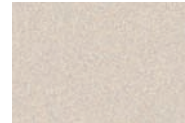
4U3
BC
Sunset Bronze Mica



4U4
BC
Orange Met



4U5
BC
Cocoa Bean Met



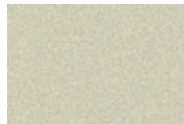
4U7
BC
Sleek Ecru Met



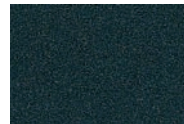
5A3
BC
Sun Fusion



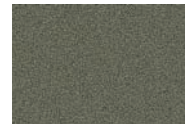
5A6
BC
Yellow Jolt



5A8
BC
Stain Gold Met



6T3
BC
Black Forest Pearl



6T7
BC
Cypress Mica



6T8
BC
Timberland Mica



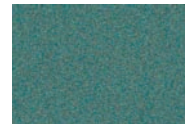
6U0
BC
Silver Pine Mica



6V2
BC
Amazon Green Met



6V4
BC
Spruce Mica



6V5
BC
Jade Green Met



6V6
BC
Deep Peridot Mica



6V7
BC
Army Green



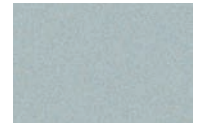
776
BC
Aloe Green Met



777
BC
Jade Sea Met



779
BC
Capri Sea Met



782
BC
Aqua Met



783
BC
Aqua Met



784
BC
Grayish Teal Met



8N0
BC
Zephyr Blue Met



8P1
BC
Speedway Blue Met



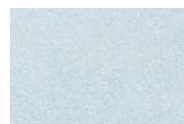
8R3
BC
Pacific Blue Met



8R5
BC
Blue Mirage Met



8R6
BC
Breakwater Blue Met



8S4
BC
Sky Blue Pearl



8S6
BC
Nautical Blue Met



8S7
BC
Wave Line Pearl



8T0
BC
Blazing Blue Met



8T1
BC
Bayou Blue Met



8T4
BC
Stingray Met



8T5
BC
Blue Ribbon Met



8T7
BC
Blue Streak Met

B/C-Basecoat/Clearcoat Color.

These colors are intended to be used only as a reference, and may not be exact representations of mixed or applied color.

2010 CAR COLORS

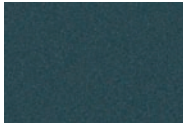
TOYOTA / LEXUS / SCION (Cont'd.)



8U0
BC
3 Stage
Black Sapphire Pearl



8U1
BC
Ultrasonic Blue Met



8U3
BC
Hypnotic Teal Mica



8U4
BC
Costa Azul Mica



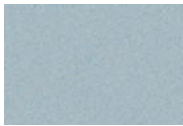
8U5
BC
Dark Blue Met



8U6
BC
Tropical Sea Met



8U7
BC
Blue Met



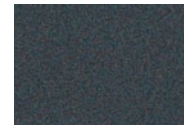
8U8
BC
Blue Whisper Mica



8U9
BC
Cerulean Blue Met



8V0
BC
Iceberg Met



8V1
BC
Winter Gray Met



8V3
BC
Deep Blue



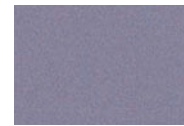
8V4
BC
Medium Blue Met



8V5
BC
Shoreline Blue Pearl



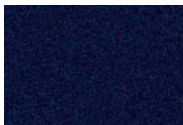
9AF
BC
Elusive Blue Met



9AG
BC
Iced Amethyst Mica



9AK
BC
Dark Purple



9AL
BC
Deep Garnet Met

Grille



11GY10
Gray Met

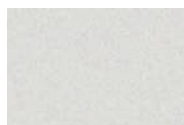


11SV09
Silver Met

Roof

(For colors in this section refer to EXTERIOR section)

Miscellaneous



11CR07
BC
Light Silver Met
Factory Pack Only

B/C-Basecoat/Clearcoat Color.

2010 CAR COLORS

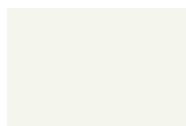
TOYOTA / LEXUS / SCION (Cont'd.)

Roof Rack



11SV09
Silver Met

Underhood: Toyota and Lexus models may use specific color-keyed primer or exterior base color with or without clear.



5012
White



5020
White



5027
White



5177
Light Gray



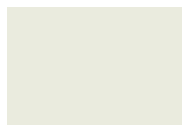
5185
Light Gray



5201
Black



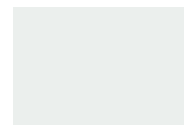
5881
Dark Blue



8004
White



8006
White



8007
White

Model Year Designation (10th character of VIN number)

Code	Year
A	2010
9	2009
8	2008
7	2007
6	2006
5	2005
4	2004
3	2003
2	2002
1	2001
Y	2000
X	1999

Assembly Plant Codes (11th character of VIN number)

Plant Code	Plant
C	Cambridge, Ontario
R	Lafayette, IN (SIA-Subaru of Indiana)
S	Princeton, IN
U	Georgetown, KY
X	San Antonio, TX
Z	Fremont, CA
0	Tahara, Japan
1	Takaoka, Japan
2	Motomachi, Japan
3	Tsutsumi, Japan
4	Sagamihara, Japan
5	Tahara, Japan
6	Obu, Japan
7	Fujimatsu, Japan
8	Hamura, Japan
9	Higashifuji, Japan

2010 CAR COLORS

Toyota Color Compatibility Plan

EXTERIOR BODY COLOR	MODEL	TU-TONE CODE	MISCELLANEOUS	ROOF	ROOF RACK	GRILLE
040 / Super White II	4Runner					Silver / 11GY10
070 / Blizzard Pearl	4Runner					Silver / 11GY10
	Highlander				Silver / 11SV09	Silver / 11SV09
1F7 / Classic Silver Met	4Runner					Silver / 11GY10
	Highlander				Silver / 11SV09	Silver / 11SV09
1G3 / Magnetic Gray Met	4Runner					Silver / 11GY10
	Highlander				Silver / 11SV09	Silver / 11SV09
1G6 / Silver Fresco Met	FJ Cruiser	2KB	Silver / 11CR07	White / 058		
202 / Black	4Runner					Silver / 11GY10
	Highlander				Silver / 11SV09	Silver / 11SV09
	FJ Cruiser	2KC	Silver / 11CR07	White / 058		
3Q3 / Salsa Red Pearl	4Runner					Silver / 11GY10
	Highlander				Silver / 11SV09	Silver / 11SV09
3R8 / Brick Red	FJ Cruiser	2JX	Silver / 11CR07	White / 058		
4T8 / Sandy Beach Met	Highlander				Silver / 11SV09	Silver / 11SV09
4U0 / Sandstorm	FJ Cruiser	2JY	Silver / 11CR07	White / 058		
4U3 / Sunset Bronze Mica	4Runner					Silver / 11GY10
5A3 / Sun Fusion	FJ Cruiser	2JU	Silver / 11CR07	White / 058		
6T7 / Cypress Mica	Highlander				Silver / 11SV09	Silver / 11SV09
6V7 / Army Green	4Runner					Silver / 11GY10
	FJ Cruiser	2KD	Silver / 11CR07	White / 058		
8S7 / Wave Line Pearl	Highlander				Silver / 11SV09	Silver / 11SV09
8T7 / Blue Streak Met	Highlander				Silver / 11SV09	Silver / 11SV09
8V5 / Shoreline Blue Pearl	4Runner					Silver / 11GY10
9AG / Iced Amethyst Mica	Highlander				Silver / 11SV09	Silver / 11SV09



VOLKSWAGEN



Audi



L041 A1A1
BC Black



LA3H 4Y4Y
BC Salsa Red



LA3S 1U1U
BC Amaryllis Red Met



LA3T 2K2K
BC Wild Cherry Met



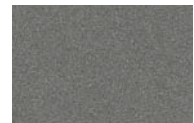
LA5Q 5R5R
BC Shark Blue Met



LA5R R1R1
BC Tossa Blue Met



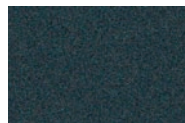
LA6K 8U8U
BC Gecko Green Met



LA7T X6X6
BC United Gray Met



LA7W 8E8E
BC Reflex Silver Met



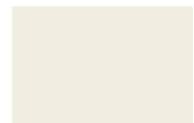
LA9W 1K1K
BC Carbon Steel Met



LB1B T1T1
BC Sunflower Yellow



LB1M V1V1
BC Harvest Moon Beige



LB9A B4B
Candy White

B/C-Basecoat/Clearcoat Color

These colors are intended to be used only as a reference, and may not be exact representations of mixed or applied color.

2010 CAR COLORS



(Cont'd.)



LC5C 7Q7Q
BC
Sapphire Blue Pearl



LC5F W9W9
BC
Blue Graphite Pearl



LC7Z 9H9H
BC
Iron Gray Met



LC8Y 7S7S
BC
Light Brown Met



LC8Z 3Q3Q
BC
Mocha Brown Pearl



LC9X 2T2T
BC
Deep Black Pearl



LC9Z Z4Z4
BC
Black Magic Met



LD1X 9A9A
BC
Opal Silver Met



LD3X N3N3
BC
Cranberry Red Pearl



LD5Q P6P6
BC
Shadow Blue Met



LD7S X9X9
BC
Alpine Gray Met



LD7X 2R2R
BC
Platinum Gray Met



LE5S H4H4
BC
Mystic Blue Met



LE7W 6T6T
BC
Vulcan Gray Met



LK5N U1U1
BC
Thunder Blue Met



LK5X Y4Y4
BC
Eismeer Blue Met



LK7X C9C9
BC
Island Gray Pearl



LM7W 9Q9Q
BC
Graphite Gray Met



LP5X R2R2
BC
Heaven Blue Met



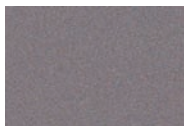
LR7K M8M8
BC
Beryllium Gray Met



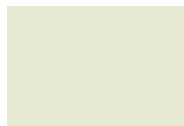
LR7L 7B7B
BC
White Gold Met



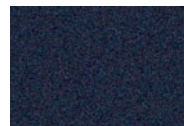
LR7M 9B9B
BC
Galapagos Met



LR7P 7F7F
BC
Alaska Gray Met



LR9A R6R6
BC
Campanella White



LX5S 7Y7Y
BC
Aventurine Blue Pearl



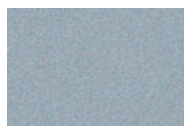
LX5V Q9Q9
BC
Aruba Blue Pearl



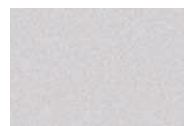
LX5W 1Y1Y
BC
Jet Blue Met



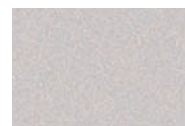
LX5X 9F9F
BC
Sphere Blue Met



LX7V U7U7
BC
Monza Silver Pearl



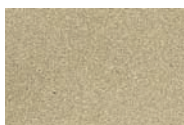
LX7W P5P5
BC
Ice Silver Met



LX7X 9T9T
BC
Sahara Silver Met



LY1C 1T1T
BC
Imola Yellow



LY1Q 9X9X
BC
Dakar Beige Met



LY2G 3F3F
BC
Solar Orange



LY3D G2G2
BC
Tornado Red



LY3J C8C8
BC
Brilliant Red



LY5Q E9E9
BC
Sepang Blue Pearl

VOLKSWAGEN / AUDI

B/C-Basecoat/Clearcoat Color.
These colors are intended to be used only as a reference, and may not be exact representations of mixed or applied color.

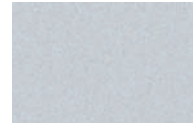
2010 CAR COLORS



(Cont'd.)



LY7E 5Q5Q
BC
Condor Gray Met



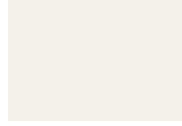
LY7F M1M1
BC
Suzuka Gray Met



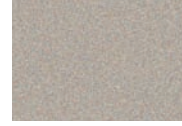
LY7G Q4Q4
BC
Quartz Gray Met



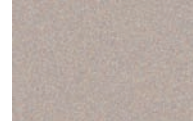
LY9B A2A2
BC
Brilliant Black



LY9C T9T9
BC
Ibis White



LZ1N C6C6
BC
Arum Beige Met



LZ1Y T2T2
BC
Savana Beige Pearl



LZ3F 9C9C
BC
Garnet Red Pearl



LZ3M N9N9
BC
Misano Red Pearl



LZ4X 1J1J
BC
Amethyst Gray Met



LZ5A 8A8A
BC
Deep Sea Blue Pearl



LZ5B X4X4
BC
Stratos Blue Pearl



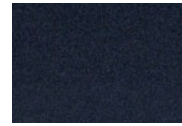
LZ5D 7X7X
BC
Night Blue Pearl



LZ5E 5W5W
BC
Mugello Blue Pearl



LZ5F 5N5N
BC
Sprint Blue Pearl



LZ5Q 5F5F
BC
Cobalt Blue Met



LZ7H X5X5
BC
Meteor Gray Pearl



LZ7L 1R1R
BC
Lava Gray Pearl



LZ7Q X1X1
BC
Oyster Gray Met



LZ7R 9U9U
BC
Northern Blue Pearl



LZ7S 6Y6Y
BC
Daytona Gray Pearl



LZ8W 4U4U
BC
Teak Brown Met



LZ9X 8C8C
BC
Cherry Black Pearl



LZ9Y L8L8
BC
Phantom Black Pearl



PBG
BC
Antigua Blue Pearl



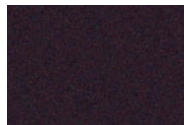
PDT
BC
Meteor Gray Met



PRH
BC
Pomegranate Red Pearl



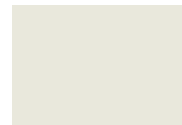
PS2
BC
Mercury Silver Met



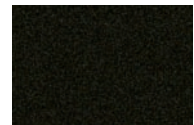
PUV
BC
Cocoa Bean Pearl



PBV
BC
Tanzanite Pearl



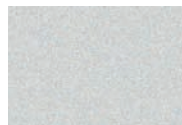
PW1
BC
Calla Lily White



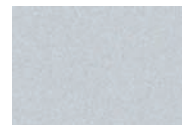
PXR
BC
Nocturne Black Met

Side Blade

(For Colors not shown in this section refer to EXTERIOR section)



L1H7
BC
Oxygen Silver Met



LY38
BC
Apollo Silver Met

B/C-Basecoat/Clearcoat Color.

These colors are intended to be used only as a reference, and may not be exact representations of mixed or applied color.

2010 CAR COLORS



(Cont'd.)

Interior



D5
Med Slate Gray



DV
Dark Slate Gray



K5
Med Pebble Beige



S3
Light Shale



T1
Cream

Audi Color Compatibility Plan		
EXTERIOR BODY COLOR	MODEL	Side Blade
LX5W / Jet Blue Met	R8	LX5W / Jet Blue Met LX7W / Ice Silver Met L1H7 / Oxygen Silver Met Carbon Sigma / Unpainted
LX7W / Ice Silver Met	R8	LX7W / Ice Silver Met LY38 / Apollo Silver Met L1H7 / Oxygen Silver Met Carbon Sigma / Unpainted
LY3J / Brilliant Red	R8	LY3J / Brilliant Red L1H7 / Oxygen Silver Met Carbon Sigma / Unpainted
LY9C / Ibis White	R8	LY9C / Ibis White LX7W / Ice Silver Met L1H7 / Oxygen Silver Met Carbon Sigma / Unpainted
LY5Q / Sepang Blue Pearl	R8	LY5Q / Sepang Blue Pearl LZ5E / Mugello Blue Pearl L1H7 / Oxygen Silver Met Carbon Sigma / Unpainted
LZ7S / Daytona Gray Pearl	R8	LZ7S / Daytona Gray Pearl LY7G / Quartz Gray Met L1H7 / Oxygen Silver Met Carbon Sigma / Unpainted
LZ9Y / Phantom Black Pearl	R8	LZ9Y / Phantom Black Pearl LZ7L / Lava Gray Pearl L1H7 / Oxygen Silver Met Carbon Sigma / Unpainted
LY7F / Suzuka Gray Met	R8	LY7F / Suzuka Gray Met LX7W / Ice Silver Met L1H7 / Oxygen Silver Met Carbon Sigma / Unpainted
LZ7L / Lava Gray Pearl	R8	LZ7L / Lava Gray Pearl LY7G / Quartz Gray Met L1H7 / Oxygen Silver Met Carbon Sigma / Unpainted

Underhood: Volkswagen and Audi models use the exterior base color with or without clearcoat.

2010 CAR COLORS



(Cont'd.)

Volkswagen / Audi Alternate Exterior Code Crossover		
This Code on Vehicle	Equals	Exterior Color Code
3FPA	=	LY2G
4UPW	=	LZ8W
4YSH	=	LA3H
4YSL	=	LA3H
5NPA	=	LZ5F
5NPB	=	LZ5F
8APA	=	LZ5A
8APB	=	LZ5A
8USH	=	LA6K
9CPA	=	LZ3F
9TPA	=	LX7X
A1SL	=	L041
A2PA	=	LY9B
A2SF	=	LY9B
B4SL	=	LB9A
C6PA	=	LZ1N
C8PA	=	LY3J
L8PA	=	LZ9Y
L8SF	=	LZ9Y
P5PA	=	LX7W
P5SF	=	LX7W
Q4PA	=	LY7G
Q4SF	=	LY7G
Q9PA	=	LX5V
R1SL	=	LA5R
R2SL	=	LP5X
T9PA	=	LY9C
T9PW	=	LY9C
T9SF	=	LY9C
U7PA	=	LX7V
V1SH	=	LB1M
V1SL	=	LB1M
X5PA	=	LZ7H
X5SF	=	LZ7H

Model Year Designation (10th character of VIN number)	
Code	Year
A	2010
9	2009
8	2008
7	2007
6	2006
5	2005
4	2004
3	2003
2	2002
1	2001
Y	2000
X	1999

Volkswagen Assembly Plant Codes (11th character of VIN number)	
Plant Code	Plant
1	Gyor, Hungary
4	Curitiba, Brazil
8	Dresden, Germany
A	Ingolstadt, Germany
C	Crewe, England
D	Bratislava, Slovakia
E	Emden, Germany
H	Hannover, Germany
K	Rheine, Germany
M	Puebla, Mexico
N	Neckarsulm, Germany
P	Mosel, Germany
V	Palmela, Portugal
W	Wolfsburg, Germany

Audi Assembly Plant Codes (11th character of VIN number)	
Plant Code	Plant
A	Ingolstadt, Germany
D	Bratislava, Slovakia
K	Karmann, Rhine
N	Neckarsulm, Germany
1	Gyor, Hungary

2010 CAR COLORS

VOLVO

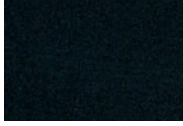
VOLVO



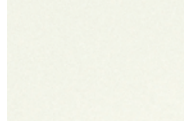
019
Black



426
BC
Mystic Silver Met



452
BC
Black Sapphire Met



453
3 Stage
White Pearl



454
BC
Ruby Red Met



455
BC
Titanium Gray Pearl



466
BC
Barents Blue Met



467
BC
Magic Blue Pearl



472
BC
Hurricane Gray Met



474
BC
Celestial Blue Pearl



476
BC
Brilliant Blue Pearl



477
BC
Electric Silver Met



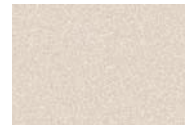
478
BC
Maple Red Pearl



479
BC
Orinoco Blue Pearl



481
BC
Cosmic White Met



484
BC
Seashell Met



487
BC
Ember Black Met



490
BC
Chameleon Blue Met



491
3 Stage
Vanilla Cream Pearl



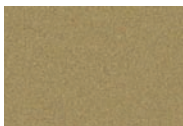
492
BC
Saville Gray Met



493
BC
Caper Green Met



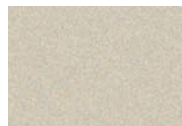
494
BC
Terra Bronze Met



495
BC
Lime Grass Green Met



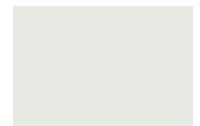
498
BC
Caspian Blue Met



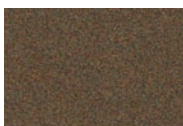
499
BC
White Gold Pearl



612
Passion Red



614
Ice White



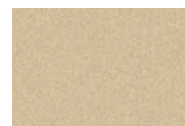
700
BC
Twilight Bronze Met



701
BC
Orange Flame Met



702
BC
Flamenco Red Met

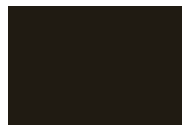


703
BC
Electrum Gold Met

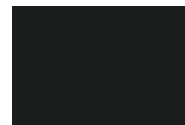


704
BC
Vibrant Copper Met

Bumper / Fascia



BB
Brown



SGB
Stone Gray

B/C-Basecoat/Clearcoat Color.

These colors are intended to be used only as a reference, and may not be exact representations of mixed or applied color.

2010 CAR COLORS

VOLVO (Cont'd.)

Underhood: Volvo models use the exterior base color with or without clearcoat.

Model Year Designation (10th character of VIN number)	
Code	Year
A	2010
9	2009
8	2008
7	2007
6	2006
5	2005
4	2004
3	2003
2	2002
1	2001
Y	2000
X	1999

Assembly Plant Codes (11th character of VIN number)	
Plant Code	Plant
1	Gothenburg, Sweden
2	Gent, Belgium
J	Uddevalla, Sweden

Color Code Locations

For 2010 Asian / European Car Colors:

Manufacturer	Position	Manufacturer	Position
ACURA	6	MINI	2,3,13
AUDI	11,12	MITSUBISHI	4
BMW	2,3,13,14	NISSAN	1,6
HONDA	6	PORSCHE	1,5
HYUNDAI	6	SAAB	1
INFINITI	1,6	SCION	5,6
JAGUAR	5,6	SMART	5,6
KIA	6	SUBARU	8
LAND ROVER	5	SUZUKI	1,3,6,10
LEXUS	5,6	TOYOTA	5,6
MAZDA	4,5,6	VOLKSWAGEN	12
MERCEDES-BENZ	1,7,8,11,12,13	VOLVO	1,4

POSITION KEY

Position	Description
1	Engine Compartment
2	Driver Side Front Strut Tower
3	Passenger Side Front Strut Tower
4	Firewall
5	Driver Side Door Edge
6	Driver Side B Pillar
7	Passenger Side Door Edge
8	Passenger Side B Pillar
9	Front Passenger Floor Pan
10	Glove Box
11	Inner Rear Compartment
12	Spare Tire Wheel Well
13	Underhood
14	Core Support

