



FLUROPON® 70% PVDF COATINGS FROM SHERWIN-WILLIAMS

Field-proven exterior metal finishes that provide lasting durability for monumental structures. Each coating is a fluoropolymer alloy, containing a 70% polyvinylidene difluoride (PVDF) resin, that meets or exceeds the rigorous AAMA 2605 performance criteria.

KEEP YOUR PROJECT LOOKING BEAUTIFUL

All Fluropon extrusion coatings offer superior UV protection, color retention and overall adhesion.

■ Fluropon

Our flagship coating. Its excellent performance is a direct result of Sherwin-Williams' innovative technology—a two-coat, solid color fluoropolymer formulation that continually exceeds performance needs while maintaining its color and durability long into the future.

■ Fluropon Classic II

When a sparkle appearance is desired, this two-coat fluoropolymer system utilizes Sherwin-Williams' proprietary formulation of aluminum and mica-based pigmentation to deliver a subtle or bold metallic appearance without the need for an added clear coat.

■ Fluropon Classic

This traditional three-coat fluoropolymer system offers a sparkle appearance that includes an added clear coat to achieve a bold, vibrant metallic effect.

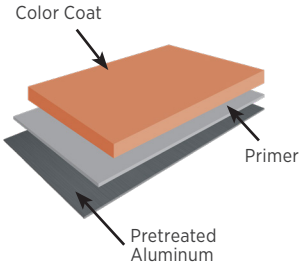
■ Fluropon Premiere

When you want to make a statement with bold and bright colors, this three-coat system creates depth and beauty using bright pigments that require a clear coat for added protection against color chalk and fade.

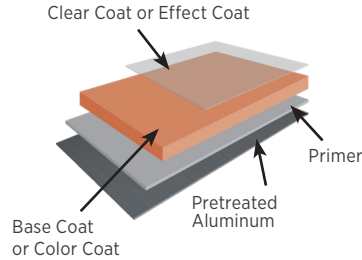
■ Fluropon Effects

Fluropon Effects transform the concept of color with innovative new palettes that have never before been achieved in 70% PVDF coating systems. These two- to three-coat systems create unique, mesmerizing effects. Kameleon creates an eye-catching color shift; Nova offers an intense sparkle; and Rustica features a nature-inspired color palette.

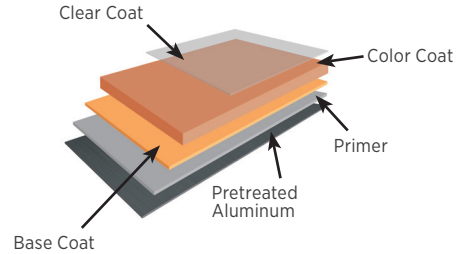
**FLUROPON®
TWO-COAT SYSTEM**
Fluorpon, Classic II and Rustica



**FLUROPON®
THREE-COAT SYSTEM**
Premiere, Classic, Nova and Kameleon



**FLUROPON®
FOUR-COAT SYSTEM**
Premiere, Classic



COATING SYSTEM	Key Characteristics	Number of Coats	Dry Film Thickness (DFT)					Total DFT:	Specular Gloss 60° +/-5 units of manufacturer's specification
			Meet or exceed 1.2 mils total						
			Primer	Color Coat	Base Coat	Clear Coat	Fluorpon® Effects Coat		
FLUROPON®	Solid Colors	2-Coat	0.2-0.4 mils	1.0-1.3 mils				1.2-1.7 mils	Standard: 25-35 Low Gloss: 5-15
FLUROPON® CLASSIC II	Metallic Utilizing Mica-Based Pigmentation	2-Coat	0.3-0.5 mils	1.2-1.5 mils				1.5-2.0 mils	Standard: 15-25 Low Gloss: 5-15
FLUROPON® CLASSIC	Metallic Utilizing Aluminum-Based Pigmentation	3-Coat	0.2-0.4 mils	1.2-1.5 mils		0.3-0.5 mils		1.7-2.4 mils	30-40
FLUROPON® PREMIERE	Bright, Vibrant Colors	3-Coat	0.2-0.4 mils	1.0-1.3 mils		0.3-0.5 mils		1.5-2.2 mils	30-50
FLUROPON® EFFECTS RUSTICA	Saturated Metallic Color Collection	2-or 3-Coat	0.2-0.5 mils		1.0-1.3 mils*		1.2-1.5 mils	2.2-3.1 mils	15-25
FLUROPON® EFFECTS NOVA	High-Intensity Sparkle	3-Coat	0.2-0.4 mils		1.0-1.3 mils		1.0-1.3 mils	2.2-3.0 mils	30-40
FLUROPON® EFFECTS KAMELEON	Color-Shifting	3-Coat	0.2-0.4 mils		1.0-1.3 mils		0.8-1.1 mils	2.0-2.8 mils	15-25
FLUROPON® FOUR-COAT SYSTEM	Solid Color or Metallic Utilizing Aluminum or Mica Pigmentation	4-Coat	0.2-0.4 mils	1.0-1.3 mils	0.3-1.0 mils**	0.3-0.5 mils		1.8-3.2 mils	Fluorpon® Premiere: 30-50 Fluorpon® Classic: 30-40

*Base coat not needed for all Fluorpon Effects Rustica colors

**Range can vary based on color



¹American Architectural Manufacturers Association. ²American Society for Testing and Materials. Fluorpon® is a registered trademark of The Sherwin-Williams Corporation. For details and health, safety and handling information, Material Safety Data Sheets (MSDS) are available at extrusion.sherwin.com.

BENEFITS

- Superior resistance to ultraviolet rays
- Outstanding color retention and consistency
- Excellent overall adhesion
- High film integrity

COLORS

Our Fluropon systems are available in a wide range of colors and special effects to achieve nearly any look you can dream up.

SUBSTRATES

Fluropon extrusion coatings may be applied to pretreated aluminum panels and extrusions.

END USES

All Fluropon coatings are ideal for external use on:

- Architectural curtain walls, louvers and grills
- Aluminum panels and extrusions
- Architectural soffits, fascia, mullions and column covers
- Residential and architectural windows and skylights, plus door and access systems

FLUROPON PERFORMANCE TESTING

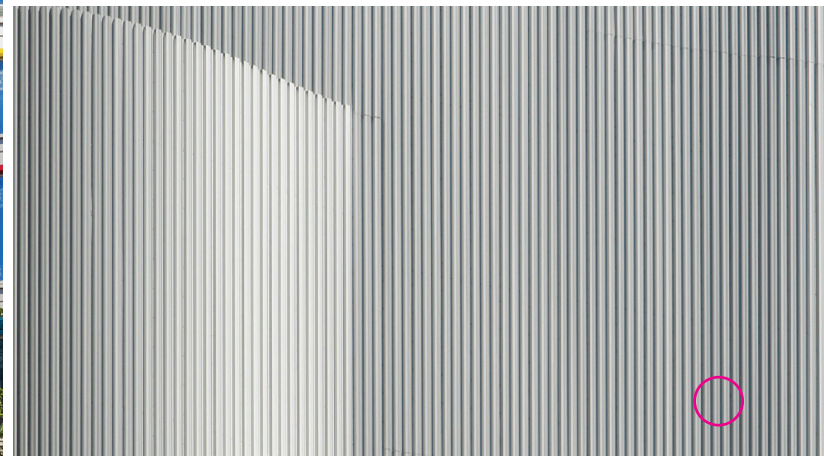
Industry Specifications Compliance	AAMA2605-17 Requirements	Voluntary Specification, Performance Requirements and Test Procedures for Superior Performing Organic Coatings on Aluminum Extrusions and Panels
Substrates	Pretreated aluminum panels and extrusions	—

PHYSICAL TESTING

PHYSICAL TESTING	ASTM TEST METHOD	AAMA 2605-17 REQUIRED TEST RESULT
Falling Sand Abrasion	ASTM D968	Minimum 40 liters of sand per mil of coating.
Film Adhesion (Dry, Wet, Boiling Water)	ASTM D3359	No removal of film under tape in the cross-hatched area.
Surface Burning Characteristics	ASTM E 84	Flame Spread Index: Class A. Smoke Developed Index: Class A.
Humidity Resistance	ASTM D2247: 100% Relative Humidity at 100° F for 4,000 hours ASTM D2247, ASTM D714	Rating 8: No more than few field blisters at 4000 hours, 100% Humidity, 100° F
Impact Resistance	ASTM D 2794	Direct impact minimum deformation 3 mm +/- 0.3 mm - No removal of film from substrate
Pencil Hardness	ASTM D 3363	F Minimum, Berol Eagle Turquoise.
Cyclic Corrosion	ASTM G 85, Annex 5: 2,000 hours	Creep from scribe or edge no more than 1/16th inch (2mm) Rating 7: Field Blister Rating: 8
Chemical Resistance	Mortar Resistance (ASTM C207), Muratic Acid (AAMA 2605-17 Sec. 8.7.1), Nitric acid (ASTM D2244), Detergent Resistance (ASTM D2244), and Window Cleaner (AAMA 2605-17 Sec. 8.7.5)	No loss of adhesion, blistering, or visually apparent change after exposure.

SOUTH FLORIDA EXPOSURE TESTING

SOUTH FLORIDA EXPOSURE TESTING	ASTM TEST METHOD	AAMA 2605-17 REQUIRED TEST RESULT
Atmosperic Environmental Exposure Testing of Non-Metallic Materials	ASTM G7	45 degree southern exposure for panel racking.
Color	ASTM D 2244	No more than 5Δ Hunter units at 10 years.
Chalk	ASTM D 4214	Number 8 rating for colors, number 6 rating for whites at 10 years.
Gloss Retention	ASTM D523	50% minimum gloss retention at 10 years.
Erosion Resistance	AAMA 2605-17 Sec 8.9.1.5	10% maximum film loss at 10 years.



DO YOU HAVE A **UNIQUE** APPLICATION?

We'll work with you to find a solution. Want a unique color? We'll create it for you. Need a quick turnaround? Talk to us, and we'll help you get your project completed on time.

WE'RE HERE TO HELP

Contact us and see how we can help with your next project.

extrusion.sherwin.com

extrusionhelp@sherwin.com

(866) 351-6900



SHERWIN-WILLIAMS
Coil Coatings