



VISION 2030

COLLECTION

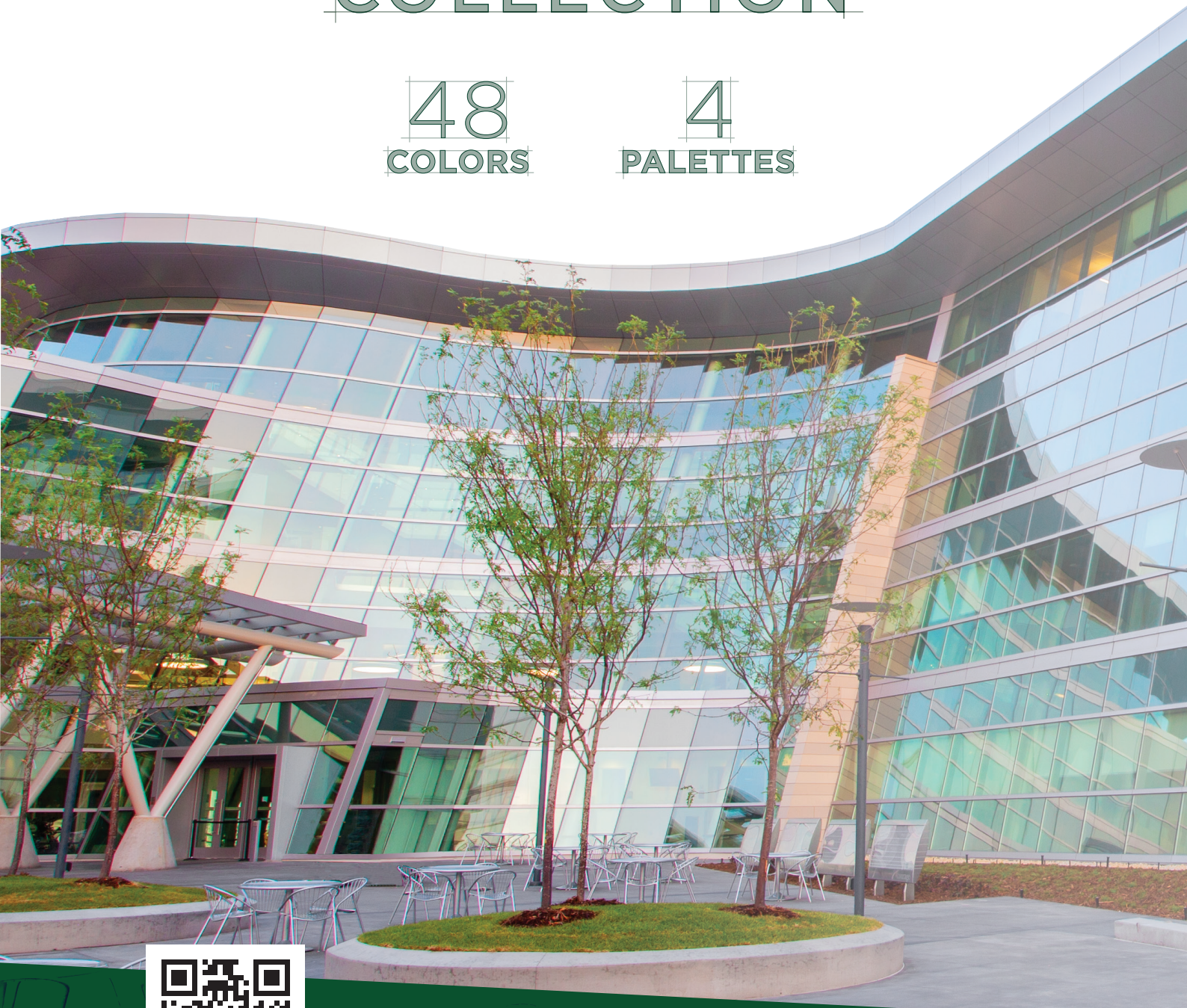
SHERWIN-WILLIAMS®

syntha pulvin. | Architectural
Powder
Coatings

VISION 2030 COLLECTION

48
COLORS

4
PALETTES



Scan to visit
synthapulvin.com

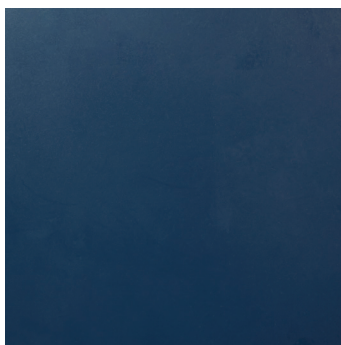
Contact us at
syntha.pulvin@sherwin.com

GENERATION PAST

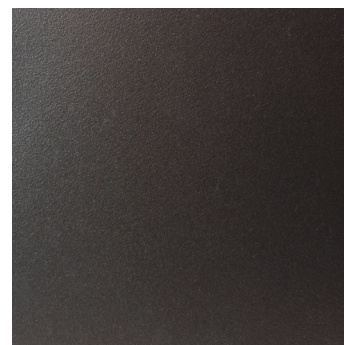
As social aspects of society slowed, shifted and adapted in recent years, humans had time to pause and reflect on their heritage and history, whether ancestral, cultural or spiritual. Nostalgia is essential to connecting exterior architectural color schemes with the past. Historic recollections bring in the royal colors of antiquity such as gold, bronze, copper and deep blue.



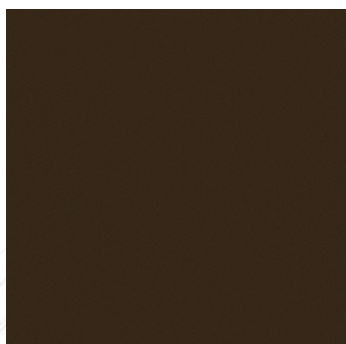
GOLD GURI
41199
VDL2E0011



SEA SAILING
55079
VLS3E0003



BROWN NEBO
35825
VDL1E0009



BRONZE VANDA
40999
VDL2E0009



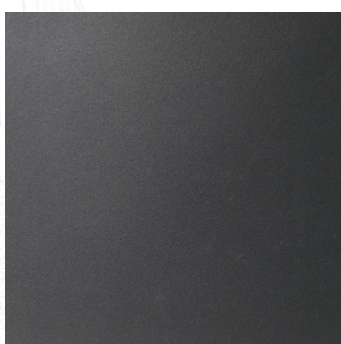
BRONZE SUWA
40969
VDL2E0006



CAMINO PATHWAY
53269
VAT1E0005



COPPER CLOKTOWER
55020
VNLOE0001



BROWN APANA
83766
VDL2E0013



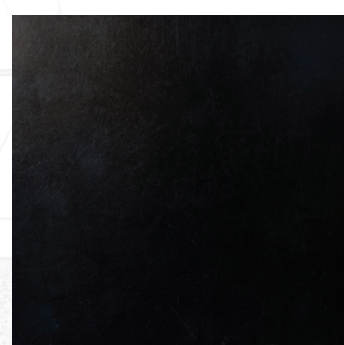
RUST RAME
36136
VDL1E0017



GOLD KARKAR
41113
VDL1E0011



RED LEATHERBOUND
55018
VRLOE0001



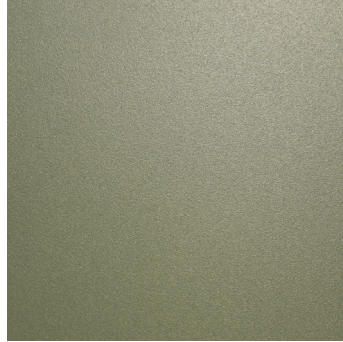
BLACK LAVA
93696
VBS2E0002

QUANTUM CITY

The changing urban demographic will continue to pressure large cities to adapt through technology. Solid, clean and structural colors incorporate the sky scene into the palette to combine the human-made with the natural. Blues, greys, silvers, whites and a touch of soft gold and copper satisfy the tech-forward lifestyle and industrial loft movement.



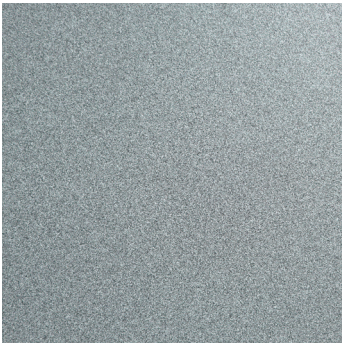
WHITE IRAZU
40943
VWL1E0001



BRONZE GLENCOE
35565
VDL1E0005



BLACK NOCTIS
65636
VBL1E0001



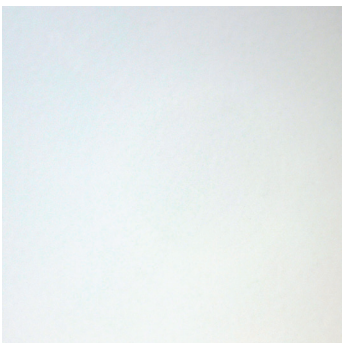
CONCRETE ASH
53271
VAB0E0001



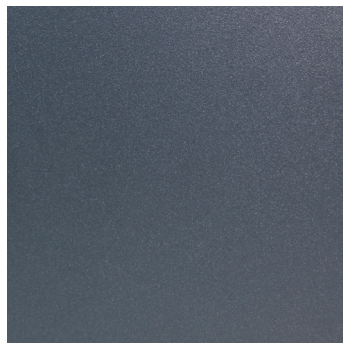
ELECTRONIC GOLDMINE
55051
VDL0E0001



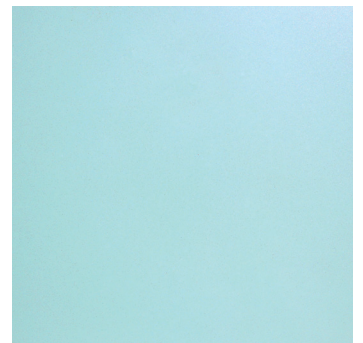
CYBERTECH SILVER
55064
VSL0E0005



ARCTIC CITY
55083
VWS3E0004



BLUE TELICA
30856
VLL1E0001



BLUE HURON
41128
VLL2E0001



MARS MIGRATION
55028
VNLOE0002



GREY PAKA
88774
VSL1E0001



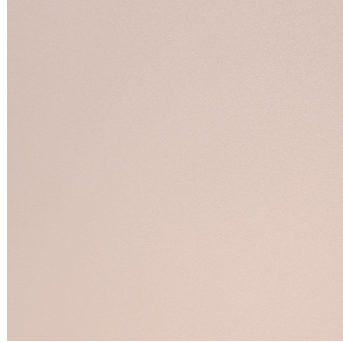
BLACK ABAYA
40953
VBL2E0001

RESTORE & REWILD

These industrial colors are reminiscent of natural, organic and environmental elements, looking to mimic nature or communicate eco-importance. This encompasses colors of water, air, plant life, soil, earth and natural metals. With a rise in global recognition of climate change, there is a need for architectural colors that represent the cause and reflect efforts for a healthy planet.



GOLD WATCH
34156
VDL2E0002



KILAUEA CLOUD
53270
VRT1E0005



DARK BRONZE
88634
VDL1E0015



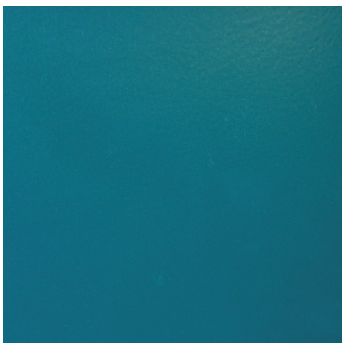
HAZELNUT MICA
37018
VDL2E0003



AVANT GARDEN
55058
VGL0E0001



GREEN PAGAN
40972
VGL1E0002



BLUE AEGEAN
55088
VGL0E0002



ANCIENT BRASS
65656
VDL1E0013



BEIGE FUTUNA
35545
VHL1E0002



REGENERATE
55015
VNT1E0002



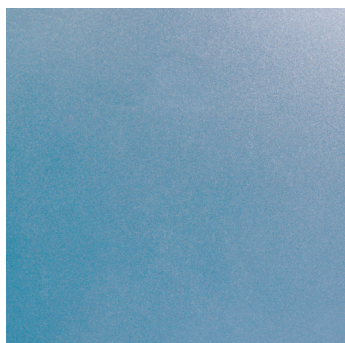
MOUNTAIN MOSS
55022
VGL0E0003



GREY TULARE
50316
VSL2E0007

HYBRID COMMUNITY

We have realized the importance of locality both in our supply chains and economies. Collective contributions to communities continue to be important for growth, whether those communities are right outside your door or a click away online. Building blocks of brick-and-mortar hues give us a sense of neighborhood, and golden colors glimmer like glimpses of the sun through soft, white clouds. All the while, blues prevail to balance the light from our online lives.



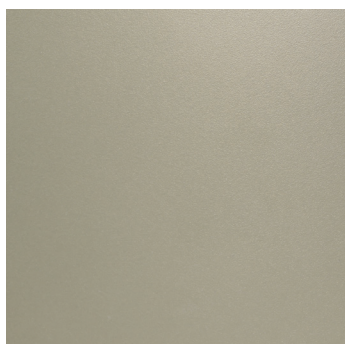
BLUE KARIBA
41129
VLL2E0002



BRONZE BAGANA
41152
VDL1E0012



BRONZE LARIO
40981
VDL2E0008



LIGHT BRONZE
88674
VDL1E0016



BRICK STOREFRONT
53268
VRT1E0006



WHITE OMEGA
30884
VWL2E0001



COPPER KIVU
37107
VDL2E0004



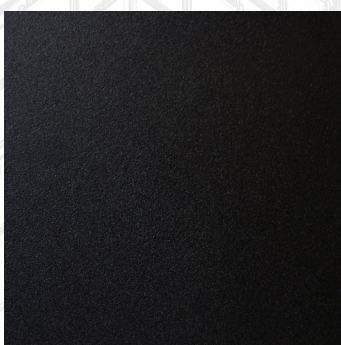
GREY KHORGO
62366
VSL1E0011



GOLD MOERO
41189
VDL2E0010



SILVER POTOSI
55646
VSL2E0008



BLACK LAVA TEXTURE
53267
VBT1E0001



GREY YOJOA
38194
VSL2E0004

Vision 2030 Collection Color Card

All Syntha Pulvin powder coatings fully comply with the criteria and standards set by the Quality Associations:

GSB: Florida 3

Qualicoat: Class 2

Color samples shown in this card are merely indicative in terms of color, finish and gloss. As for technical reasons, results may vary slightly on account of the individual production process.

This document is not contractually binding.

Vision 2030 Carta de colores

Todos los recubrimientos en polvo Syntha Pulvin respetan rigurosamente las especificaciones y los estándares de calidad establecidos por las Marcas de Calidad:

GSB: Florida 3

Qualicoat : Clase 2

Las muestras de los colores representados en este catálogo son meramente indicativos. El aspecto y brillo pueden sufrir ligeras variaciones con el tiempo. Asimismo los resultados pueden variar según el proceso de aplicación particular.

El presente documento no es válido ni vinculante a fines contractuales.

Vision 2030 Cartella Colori

Tutte le vernici in polvere Syntha Pulvin rispettano rigorosamente le specifiche e gli standard qualitativi stabiliti dalle Associazioni di Qualità:

GSB: Florida 3

Qualicoat: Classe 2

La rappresentazione della tinta, aspetto e brillantezza, potendo subire variazioni nel tempo, è puramente indicativa. Leggere variazioni possono verificarsi a seconda dei singoli processi applicativi.

Il presente documento non è valido o vincolante a fini contrattuali.

Vision 2030 Χρωματολόγιο

Όλες οι πούδρες Syntha Pulvin πληρούν τις προδιαγραφές των οργανισμών πιστοποίησης:

GSB: Florida 3

Qualicoat: Class 2

Για τεχνικούς λόγους, τα δοκίμια του παρόντος καταλόγου μπορεί να έχουν μια ελαφρά απόκλιση από την πραγματική βαφή σε βιομηχανική κλίμακα.

Αυτό το έγγραφο δεν έχει συμβατική ισχύ.

Vision 2030 Nuancier

Tous les revêtements Syntha Pulvin à base de peintures en poudre respectent pleinement les critères et les normes établies par les organismes de certifications suivants:

GSB : Florida 3

Qualicoat : Classe 2

Les échantillons de couleur reproduits dans ce nuancier le sont uniquement à titre indicatif. Le rendu et la brillance peuvent varier légèrement au fil du temps selon les procédés d'applications individuels.

Ce document n'a aucune valeur contractuelle.

Vision 2030 Farbkarte

Die vorgestellten Syntha Pulvin Pulverbeschichtungen erfüllen die Anforderungsprofile der Qualitätsgemeinschaften:

GSB: Florida 3

Qualicoat: Class 2

Die Farbmuster sind hinsichtlich Farbe, Effekt und Glanz nicht verbindlich. Bei Fertigung dieser Farben sind geringe Abweichungen nicht auszuschließen.

Das Dokument ist nicht rechtsverbindlich.

Vision 2030 Karta Kolorów

Wszystkie farby proszkowe Syntha Pulvin w pełni spełniają kryteria i standardy Stowarzyszeń Kontroli Jakości:

GSB: Florida 3

Qualicoat: Klasa 2

Próbki farb ukazane w tym katalogu są orientacyjne pod względem odcienia, wykończenia i stopnia połysku, ponieważ w procesie technicznym mogą pojawić się delikatne odchylenia spowodowane zindywidualizowanym procesem produkcyjnym.

Niniejszy dokument nie stanowi prawnie wiążącej umowy.

Vision 2030 Collectie

Alle Syntha Pulvin poederlakken voldoen aan alle criteria en standaarden gespecificeerd onder de volgende kwaliteitsrichtlijnen:

GSB: Florida 3

Qualicoat: Class2

Kleurstalen vermeld in deze kleurenkaar zijn louter indicatief qua kleur, effect en glans en kunnen door technische redenen licht afwijken van het individuele productie proces.

Dit document is contractueel niet bindend.

Contact Us

Benelux

sw.benelux@sherwin.com

Czech Republic

Phone: +420 566 501 411
info.cz@sherwin.com

Denmark

Phone: +45 97 21 61 11
denmark.web@sherwin.com

Finland

Phone: +358 10 218 3600
myynti@sherwin.com

France

Phone: +33 1 60 81 13 00
frinfo@sherwin.com
Phone: +33 (0) 54 99 60 500
inver.fr@sherwin.com

Germany

Phone: +49 351 82991-0
office.dresden@sherwin.com

Greece

Phone: +30 210 610 9930-4
inver.gr@sherwin.com

Ireland

Phone: +353 1401 9304
dublin.customerservice@sherwin.com

India

Phone: +91-9818044377
gi.india.info@sherwin.com

Italy

Phone: +39 051 638 0411
inver@sherwin.com

Lithuania

Phone: +370 5 240 2420
infolt@sherwin.com

Norway

Phone: +47 63 87 10 20
norway@sherwin.com

Poland

Phone: +48 61 624 4500
komorniki.customerservice.gi@sherwin.com
Phone: +48 14658 4100
debica.customerservice.gi@sherwin.com

Romania

Phone: +40 724 275 636
bucharest.office@sherwin.com

Serbia

Phone: +381 11 40 40 507
gi.serbia.info@sherwin.com

South Africa

Phone: +27 31 459 8400
GISouthAfrica@sherwin.com

Spain

Phone: +34 (0) 93 884 3442
gi.spain.info@sherwin.com

Sweden

Phone: +46 381 261 00
info.sweden@sherwin.com

United Kingdom

Phone: +44 151 486 0486
liverpool.sales@sherwin.com

USA

Phone: +1 (612) 851 7000
gi.na.info@sherwin.com

Certifications



SHERWIN-WILLIAMS®

For more than 155 years, Sherwin-Williams has been a leader in the art and science of coatings that excel in both beauty and function. Vision 2030 represents a major breakthrough in powder coatings technology focused on quality products designed for the architectural market. Vision 2030 puts our cumulative knowledge of architectural color trends at your availability. Sherwin-Williams has developed the Vision 2030 collection with the scope to convey emotion, define global cultures, awaken the spirit, stir the soul, embellish desires and finally help all of us to evolve into the realm of color.

syntha pulvin.

A brand of The Sherwin-Williams Company