



# VISION 2030

## COLLECTION

**SHERWIN-WILLIAMS®**

syntha pulvin.

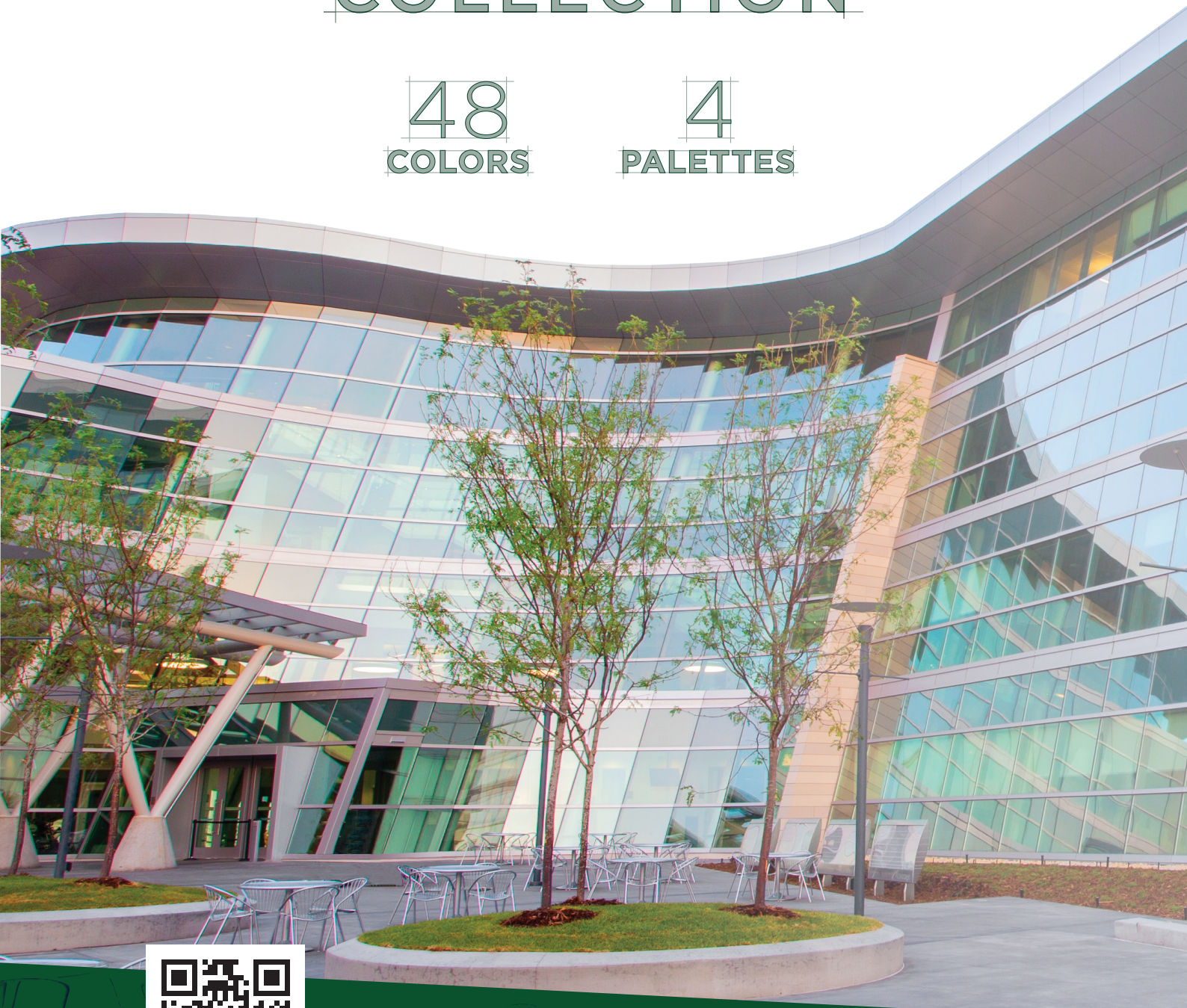
Architectural  
Powder  
Coatings



# VISION 2030 COLLECTION

48  
COLORS

4  
PALETTES



Scan to visit  
[synthapulvin.com](http://synthapulvin.com)

Contact us at  
[syntha.pulvin@sherwin.com](mailto:syntha.pulvin@sherwin.com)

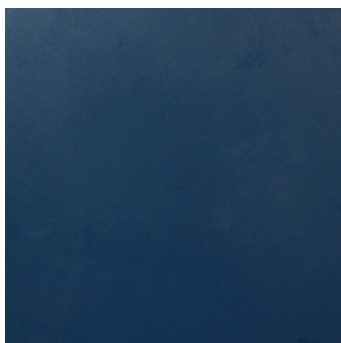


# GENERATION PAST

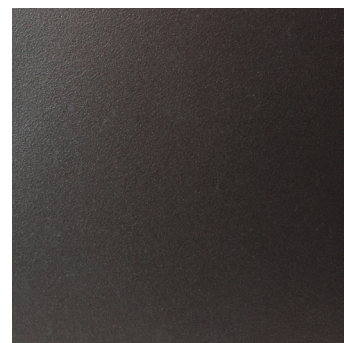
As social aspects of society slowed, shifted and adapted in recent years, humans had time to pause and reflect on their heritage and history, whether ancestral, cultural or spiritual. Nostalgia is essential to connecting exterior architectural color schemes with the past. Historic recollections bring in the royal colors of antiquity such as gold, bronze, copper and deep blue.



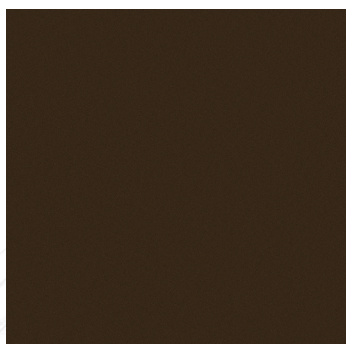
GOLD GURI  
41199  
VDL2E0011



SEA SAILING  
55079  
VLS3E0003



BROWN NEBO  
35825  
VDL1E0009



BRONZE VANDA  
40999  
VDL2E0009



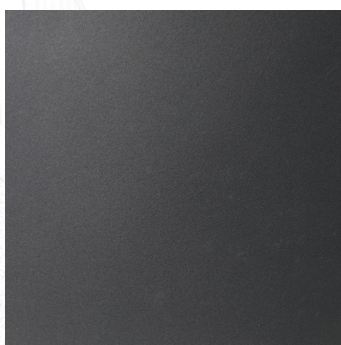
BRONZE SUWA  
40969  
VDL2E0006



CAMINO PATHWAY  
53269  
VAT1E0005



COPPER CLOKTOWER  
55020  
VNLOE0001



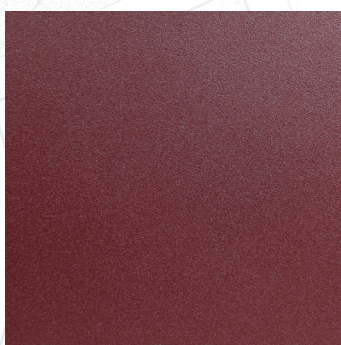
BROWN APANA  
83766  
VDL2E0013



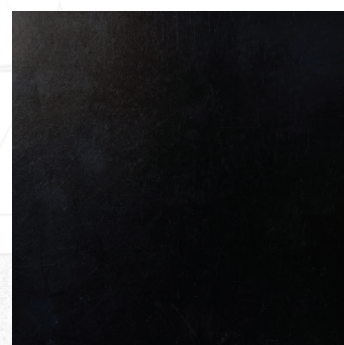
RUST RAME  
36136  
VDL1E0017



GOLD KARKAR  
41113  
VDL1E0011



RED LEATHERBOUND  
55018  
VRLOE0001



BLACK LAVA  
93696  
VBS2E0002

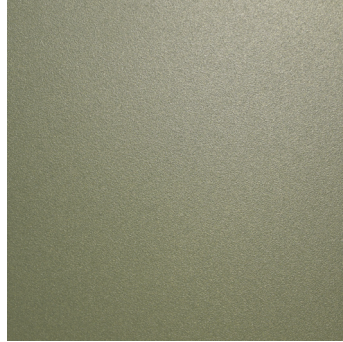


# QUANTUM CITY

The changing urban demographic will continue to pressure large cities to adapt through technology. Solid, clean and structural colors incorporate the sky scene into the palette to combine the human-made with the natural. Blues, greys, silvers, whites and a touch of soft gold and copper satisfy the tech-forward lifestyle and industrial loft movement.



WHITE IRAZU  
40943  
VWL1E0001



BRONZE GLENCOE  
35565  
VDL1E0005



BLACK NOCTIS  
65636  
VBL1E0001



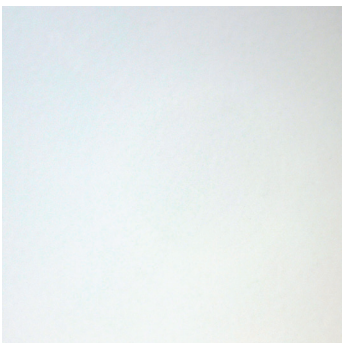
CONCRETE ASH  
53271  
VAB0E0001



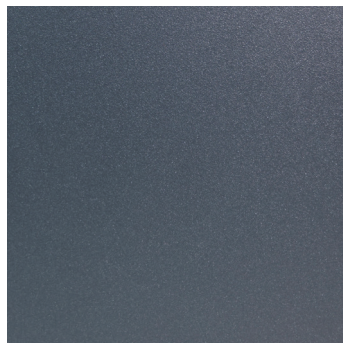
ELECTRONIC GOLDMINE  
55051  
VDL0E0001



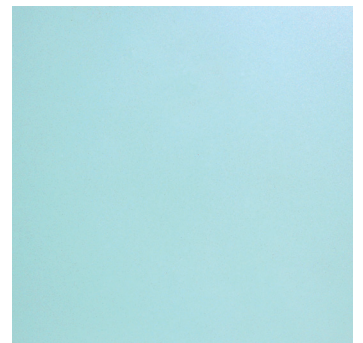
CYBERTECH SILVER  
55064  
VSL0E0005



ARCTIC CITY  
55083  
VWS3E0004



BLUE TELICA  
30856  
VLL1E0001



BLUE HURON  
41128  
VLL2E0001



MARS MIGRATION  
55028  
VNLOE0002



GREY PAKA  
88774  
VSL1E0001



BLACK ABAYA  
40953  
VBL2E0001

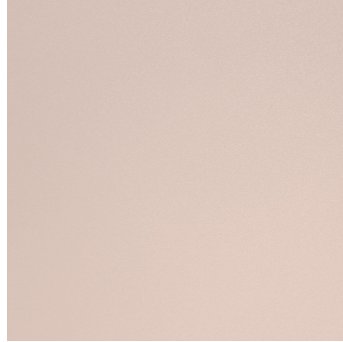


# RESTORE & REWILD

These industrial colors are reminiscent of natural, organic and environmental elements, looking to mimic nature or communicate eco-importance. This encompasses colors of water, air, plant life, soil, earth and natural metals. With a rise in global recognition of climate change, there is a need for architectural colors that represent the cause and reflect efforts for a healthy planet.



GOLD WATCH  
34156  
VDL2E0002



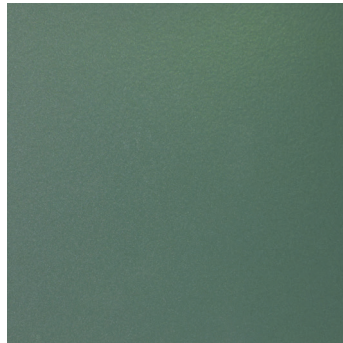
KILAUEA CLOUD  
53270  
VRT1E0005



DARK BRONZE  
88634  
VDL1E0015



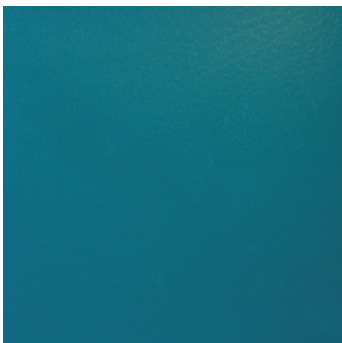
HAZELNUT MICA  
37018  
VDL2E0003



AVANT GARDEN  
55058  
VGL0E0001



GREEN PAGAN  
40972  
VGL1E0002



BLUE AEGEAN  
55088  
VGL0E0002



ANCIENT BRASS  
65656  
VDL1E0013



BEIGE FUTUNA  
35545  
VHL1E0002



REGENERATE  
55015  
VNT1E0002



MOUNTAIN MOSS  
55022  
VGL0E0003

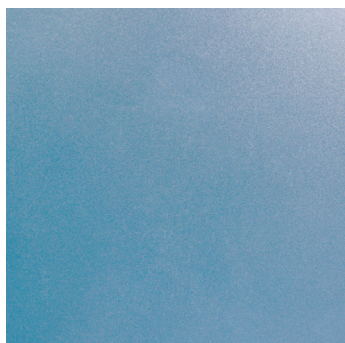


GREY TULARE  
50316  
VSL2E0007



# HYBRID COMMUNITY

We have realized the importance of locality both in our supply chains and economies. Collective contributions to communities continue to be important for growth, whether those communities are right outside your door or a click away online. Building blocks of brick-and-mortar hues give us a sense of neighborhood, and golden colors glimmer like glimpses of the sun through soft, white clouds. All the while, blues prevail to balance the light from our online lives.



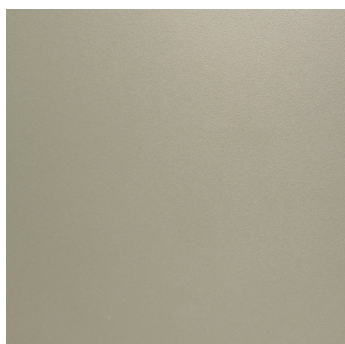
BLUE KARIBA  
41129  
VLL2E0002



BRONZE BAGANA  
41152  
VDL1E0012



BRONZE LARIO  
40981  
VDL2E0008



LIGHT BRONZE  
88674  
VDL1E0016



BRICK STOREFRONT  
53268  
VRT1E0006



WHITE OMEGA  
30884  
VWL2E0001



COPPER KIVU  
37107  
VDL2E0004



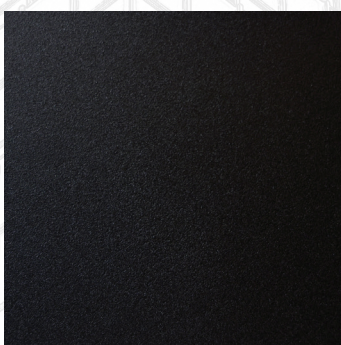
GREY KHORGO  
62366  
VSL1E0011



GOLD MOERO  
41189  
VDL2E0010



SILVER POTOSI  
55646  
VSL2E0008



BLACK LAVA TEXTURE  
53267  
VBT1E0001



GREY YOJOA  
38194  
VSL2E0004



### **Vision 2030 Collection Color Card**

All Syntha Pulvin powder coatings fully comply with the criteria and standards set by the Quality Associations:

GSB: Florida 3

Qualicoat: Class 2

Color samples shown in this card are merely indicative in terms of color, finish and gloss. As for technical reasons, results may vary slightly on account of the individual production process.

This document is not contractually binding.

### **Vision 2030 Carta de colores**

Todos los recubrimientos en polvo Syntha Pulvin respetan rigurosamente las especificaciones y los estándares de calidad establecidos por las Marcas de Calidad:

GSB: Florida 3

Qualicoat : Clase 2

Las muestras de los colores representados en este catálogo son meramente indicativos. El aspecto y brillo pueden sufrir ligeras variaciones con el tiempo. Asimismo los resultados pueden variar según el proceso de aplicación particular.

El presente documento no es válido ni vinculante a fines contractuales.

### **Vision 2030 Cartella Colori**

Tutte le vernici in polvere Syntha Pulvin rispettano rigorosamente le specifiche e gli standard qualitativi stabiliti dalle Associazioni di Qualità:

GSB: Florida 3

Qualicoat: Classe 2

La rappresentazione della tinta, aspetto e brillantezza, potendo subire variazioni nel tempo, è puramente indicativa. Leggere variazioni possono verificarsi a seconda dei singoli processi applicativi.

Il presente documento non è valido o vincolante a fini contrattuali.

### **Vision 2030 Χρωματολόγιο**

Όλες οι πούδρες Syntha Pulvin πληρούν τις προδιαγραφές των οργανισμών πιστοποίησης:

GSB: Florida 3

Qualicoat: Class 2

Για τεχνικούς λόγους, τα δοκίμια του παρόντος καταλόγου μπορεί να έχουν μια ελαφρά απόκλιση από την πραγματική βαφή σε βιο μηχανική κλίμακα.

Αυτό το έγγραφο δεν έχει συμβατική ισχύ.

### **Vision 2030 Nuancier**

Tous les revêtements Syntha Pulvin à base de peintures en poudre respectent pleinement les critères et les normes établies par les organismes de certifications suivants:

GSB : Florida 3

Qualicoat : Classe 2

Les échantillons de couleur reproduits dans ce nuancier le sont uniquement à titre indicatif. Le rendu et la brillance peuvent varier légèrement au fil du temps selon les procédés d'applications individuels.

Ce document n'a aucune valeur contractuelle.

### **Vision 2030 Farbkarte**

Die vorgestellten Syntha Pulvin Pulverbeschichtungen erfüllen die Anforderungsprofile der Qualitätsgemeinschaften:

GSB: Florida 3

Qualicoat: Class 2

Die Farbmuster sind hinsichtlich Farbe, Effekt und Glanz nicht verbindlich. Bei Fertigung dieser Farben sind geringe Abweichungen nicht auszuschließen.

Das Dokument ist nicht rechtsverbindlich.

### **Vision 2030 Karta Kolorów**

Wszystkie farby proszkowe Syntha Pulvin w pełni spełniają kryteria i standardy Stowarzyszeń Kontroli Jakości:

GSB: Florida 3

Qualicoat: Klasa 2

Próbki farb ukazane w tym katalogu są orientacyjne pod względem odcienia, wykończenia i stopnia połysku, ponieważ w procesie technicznym mogą pojawić się delikatne odchylenia spowodowane zindywidualizowanym procesem produkcyjnym.

Niniejszy dokument nie stanowi prawnie wiążącej umowy.

### **Vision 2030 Collectie**

Alle Syntha Pulvin poederlakken voldoen aan alle criteria en standaarden gespecificeerd onder de volgende kwaliteitsrichtlijnen:

GSB: Florida 3

Qualicoat: Class2

Kleurstalen vermeld in deze kleurenkaart zijn louter indicatief qua kleur, effect en glans en kunnen door technische redenen licht afwijken van het individuele productie proces.

Dit document is contractueel niet bindend.



# Contact Us

## Benelux

sw.benelux@sherwin.com

## Czech Republic

Phone: +420 566 501 411  
info.cz@sherwin.com

## Denmark

Phone: +45 97 21 61 11  
denmark.web@sherwin.com

## Finland

Phone: +358 10 218 3600  
myynti@sherwin.com

## France

Phone: +33 1 60 81 13 00  
frinfo@sherwin.com  
Phone: +33 (0) 54 99 60 500  
inver.fr@sherwin.com

## Germany

Phone: +49 351 82991-0  
office.dresden@sherwin.com

## Greece

Phone: +30 210 610 9930-4  
inver.gr@sherwin.com

## Ireland

Phone: +353 1401 9304  
dublin.customerservice@sherwin.com

## India

Phone: +91-9818044377  
gi.india.info@sherwin.com

## Italy

Phone: +39 051 638 0411  
inver@sherwin.com

## Lithuania

Phone: +370 5 240 2420  
infolt@sherwin.com

## Norway

Phone: +47 63 87 10 20  
norway@sherwin.com

## Poland

Phone: +48 61 624 4500  
komorniki.customerservice.gi@sherwin.com  
Phone: +48 14658 4100  
debica.customerservice.gi@sherwin.com

## Romania

Phone: +40 724 275 636  
bucharest.office@sherwin.com

## Serbia

Phone: +381 11 40 40 507  
gi.serbia.info@sherwin.com

## South Africa

Phone: +27 31 459 8400  
GISouthAfrica@sherwin.com

## Spain

Phone: +34 (0) 93 884 3442  
gi.spain.info@sherwin.com

## Sweden

Phone: +46 381 261 00  
info.sweden@sherwin.com

## United Kingdom

Phone: +44 151 486 0486  
liverpool.sales@sherwin.com

## USA

Phone: +1 (612) 851 7000  
gi.na.info@sherwin.com

# Certifications



# SHERWIN-WILLIAMS®

For more than 155 years, Sherwin-Williams has been a leader in the art and science of coatings that excel in both beauty and function. Vision 2030 represents a major breakthrough in powder coatings technology focused on quality products designed for the architectural market. Vision 2030 puts our cumulative knowledge of architectural color trends at your availability. Sherwin-Williams has developed the Vision 2030 collection with the scope to convey emotion, define global cultures, awaken the spirit, stir the soul, embellish desires and finally help all of us to evolve into the realm of color.

syntha pulvin.

A brand of The Sherwin-Williams Company