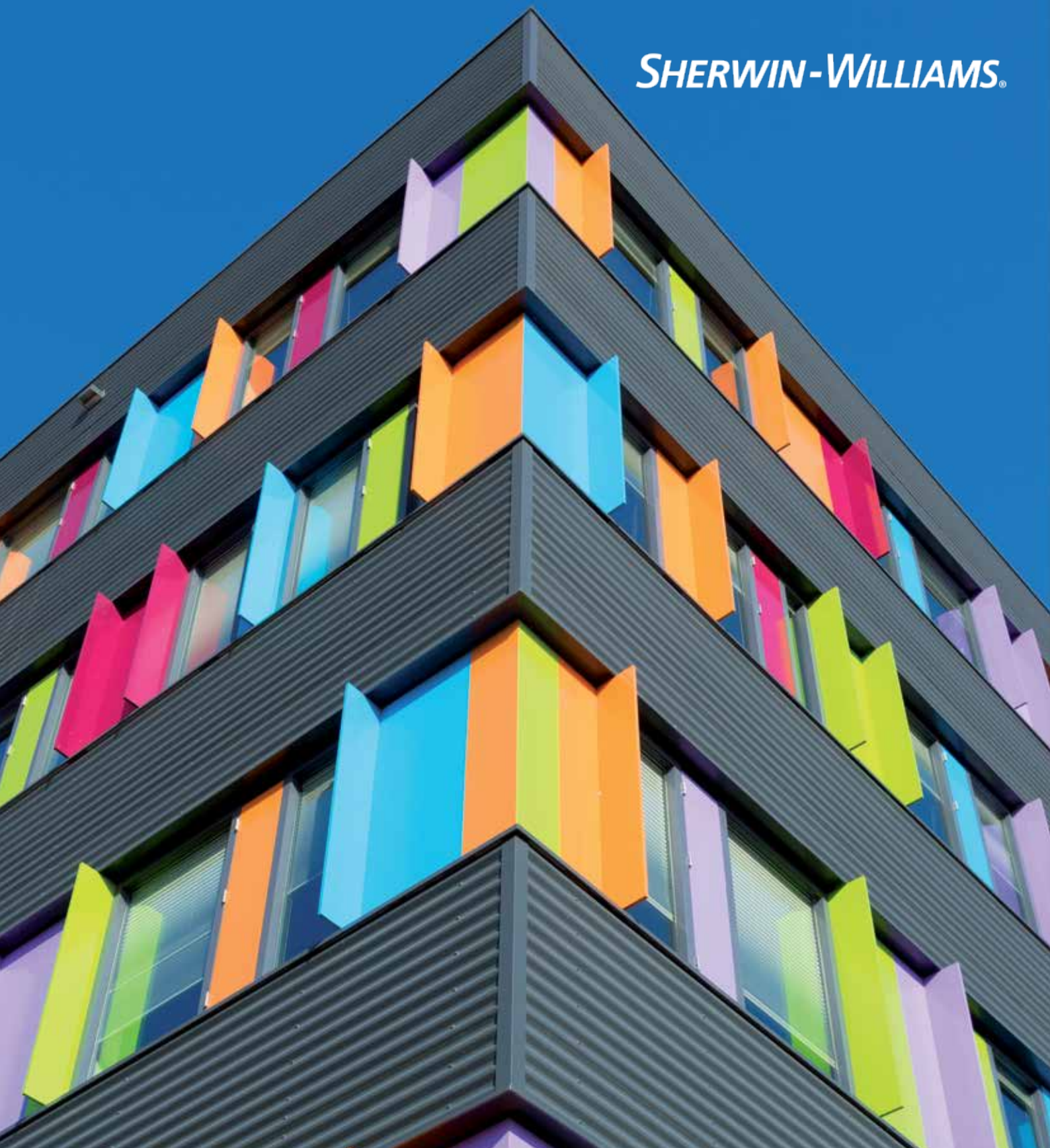


SHERWIN-WILLIAMS®



High-Durable Architectural Powder Coatings

syntha pulvin

ARCHITECTURAL
COATING
SOLUTIONS



SHERWIN-WILLIAMS®

The Sherwin-Williams Company is a global leader in the manufacture, development distribution and sale of paint, coatings and related products to professional, industrial, commercial and retail customers.

Sherwin-Williams has an extensive retail presence throughout the Americas, and growing service capabilities in Europe and Asia/Pacific.

The Company is an industry leader with many years of experience in architectural finishing technology as well.

We offer the latest available technology and are committed to the development of quality products and services.

We support the architectural market through our involvement on educational, specification and promotional committees of Qualicoat and GSB.

Sherwin-Williams serves the product finishing market from company-owned locations worldwide. We offer local support and work closely with job coaters, extruders, and OEMs to optimize application processes. Fast turnaround and flexible order quantities make it easier to meet tight deadlines and satisfy your customers with standard or custom matched colors.



Syntha Pulvin® powder coatings

Our world is color, your dream will last

The roots of modern coloring go back till the 1920s. Already in the construction house coloring and color leading systems was considered as an essential component of the architecture - the subject Color was moved more and more in the center of the town planning debate.

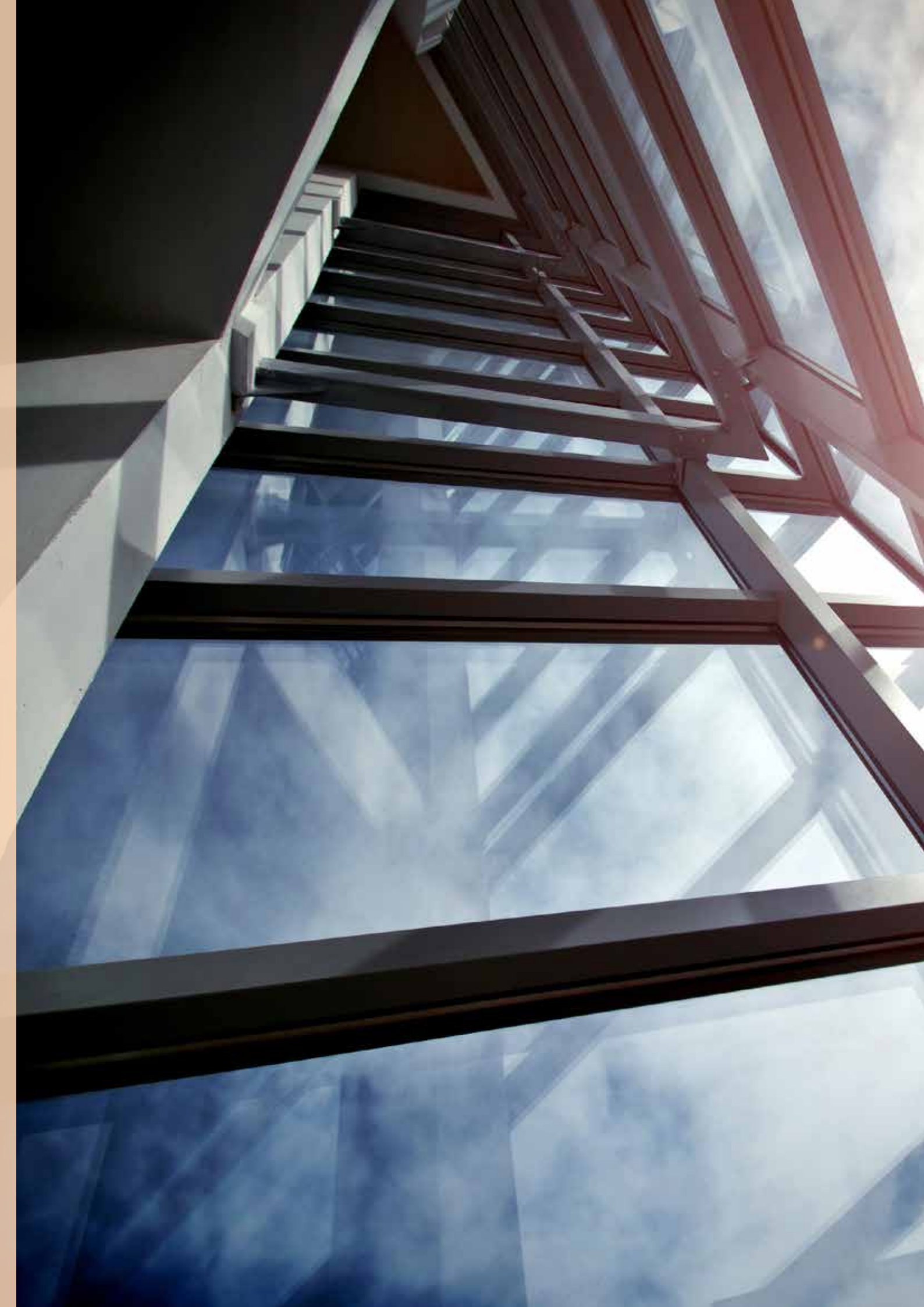
Since then coloring has become much more important. Colors divide and structure, mediate moods and give orientation. Colors release feelings. The knowledge around these effects stamps the appearance of a building.

However, after their visual importance, colors and coatings are still a second key important task. They protect material and construction unit and hold complex constructions functionally. Since the facades and more generally architectural aluminium components must endure the most severe strains of the architecture, Sherwin-Williams have developed and formulate high durable coatings.

Syntha Pulvin® powder coatings offer extremely long lifespan, above-average color behavior and brilliancy behavior, high corrosion prevention and good cleaning ability.

At Sherwin-Williams, we believe in color. We think it has the power to inspire, to connect and to bring design vision to life in unexpected ways.

That's why we have spent the past 150 years building a reputation for color innovation. We expand our color catalogue every year with ambitious and ongoing research. We achieve lasting durability and beauty through science. Most importantly, we commit to being reliable and collaborative partner so you can count on our innovation to inspire others.



Designed to stand the test of time

In order to leave a legacy, beauty needs to be tough. That's why we put our coatings through rigorous testing for decades. We want to be able to say with confidence that the brilliant color you love will last.

Syntha Pulvin[®] High Durable coatings

Syntha Pulvin[®] HD (high durable) coatings are field proven, high performance exterior finishes. They provide outstanding resistance to ultraviolet rays, exceptional color retention and resistance to chalking and chemical degradation.

When resistance to atmospheric conditions is generally required the best choice is the HD range. The (PE/P/HD) polyesters in their various finishes, smooth, gloss, wrinkled, smooth opaque and related metallic versions have been developed specially for the architectural market and have received GSB Master Quality and Qualicoat Class 2 approvals.

Main benefits of Qualicoat Class 2 coatings, compared to Qualicoat Class 1 standard durability:

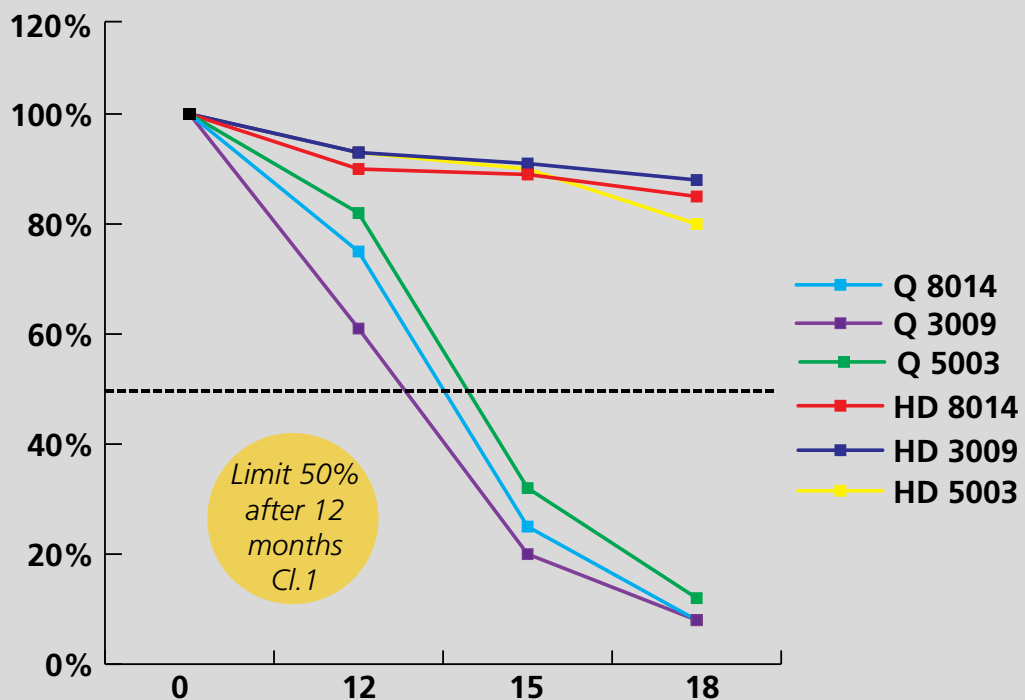
- Exceptional exterior durability
- Excellent color consistency
- Remarkable abrasion resistance
- Reduced cleaning frequency
- Environment friendly thanks to a longer lasting
- Standard curing conditions
- Excellent flow
- Available in a wide range of colors, gloss and effects.



Gloss and color evolution



PE/P/HD % Gloss retention vs. PE/P/Q





Syntha Pulvin®

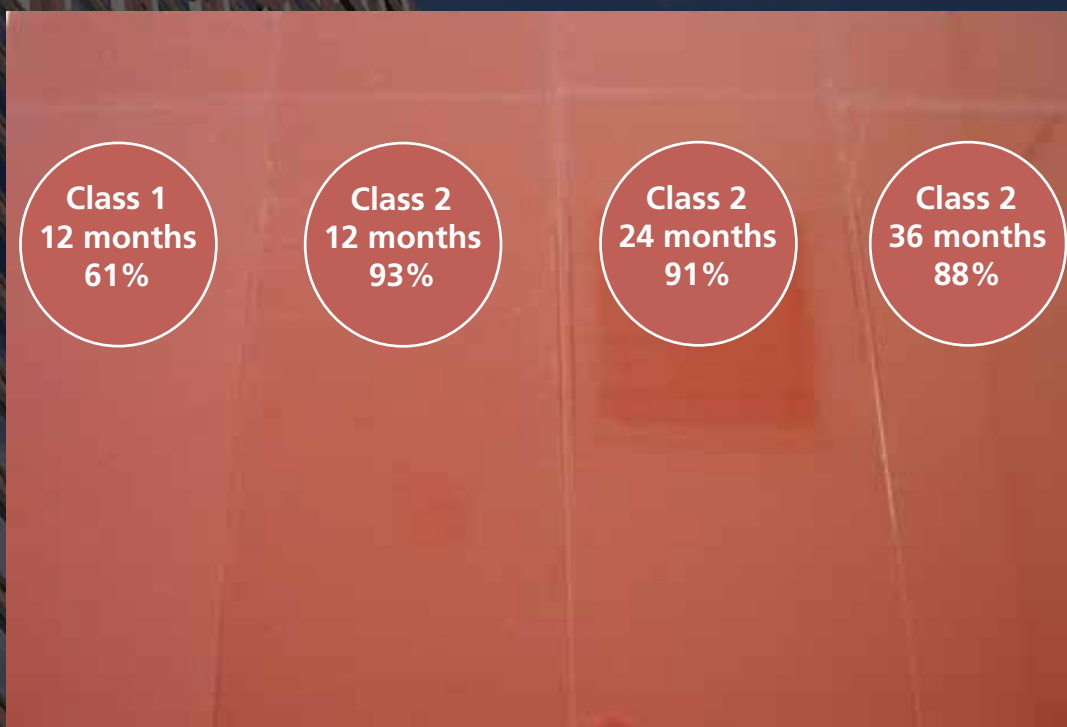
High Durable coatings

Prepared to perform

Thanks to our robust testing and innovation, we have a wide range of Syntha Pulvin® products that meet most performance specifications including Qualicoat Class 2 and GSB Master.

We rigorously test and retest our products. Thanks to this research, our products are formulated to resist fading, chalking, blistering, cracking, marring, corrosion and gloss degradation.

Gloss Retention Comparison





Syntha Pulvin® – High Durable Offer

This weatherproof, superior-performance product combines the entirety of our experience over the last 40 years in the development of powder coatings for architectural outdoor use. Syntha Pulvin® PE/P/HD meets the highest demands even in extreme weather conditions and UV exposure.

These products meet the requirements of Qualicoat Class 2 and GSB Master.

Syntha Pulvin® PE/P/HD are ideal for all buildings (monumental, commercial, residential) where the highest quality standards are required. Specify Syntha Pulvin® by product code to ensure that your building project stays beautiful for years to come. **For any warranty request, please contact your local Sherwin-Williams representative.**

Vision 2020

Vision 2020 represents a major breakthrough in powder coating technology focused on eco-friendly products designed for the architectural market. Vision 2020 puts our cumulative knowledge of architectural color trends at your availability. Sherwin-Williams has developed the collection Vision 2020 with the scope to convey emotion, define global cultures, and finally help all of us to evolve into the realm of color.

RAL Fine Texture PE/P/HD FTX - Matt Fine Textured coatings create a soft touch

Trendy RAL fine-texture colors provide excellent scratch resistance and superior hiding to mask small substrate imperfections.

RAL Matt PE/P/HDM - Matt powder coatings for lasting elegance

Striking matt RAL colors reflect our customers' multi-faceted design requirements. The unique appearance of the velvety surfaces adds to the intriguing interaction of effects within the architecture.

RAL Gloss & Satin PE/P/HD - High gloss and satin powder coatings for a timeless finish

Colorful freedom of design with an elegant Gloss/Satin effect. In addition to its outstanding performance qualities this product line creates a fascinatingly smooth surface finish.

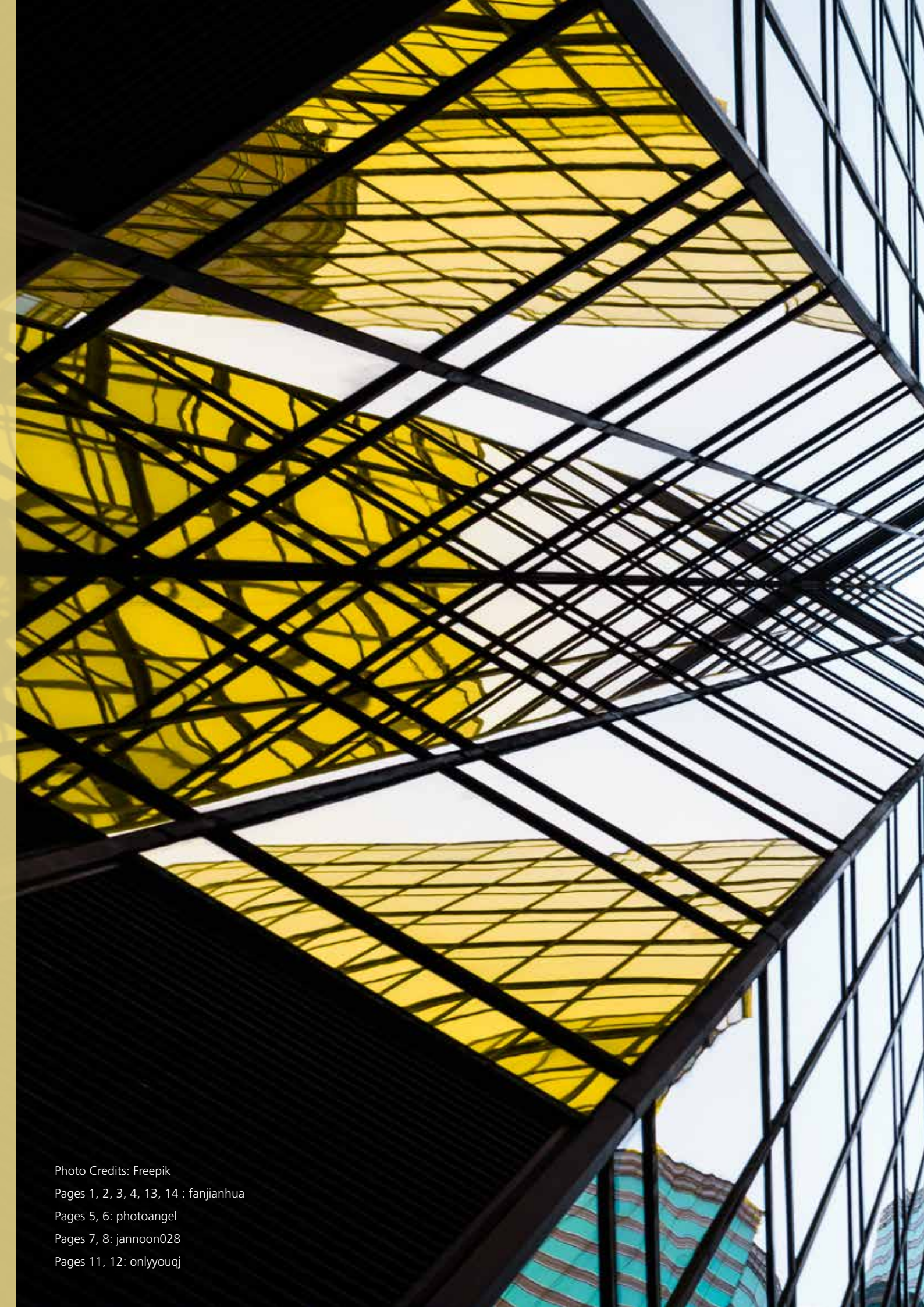


Photo Credits: Freepik

Pages 1, 2, 3, 4, 13, 14 : fanjianhua

Pages 5, 6: photoangel

Pages 7, 8: jannoon028

Pages 11, 12: onlyyouqj

Contact us

SHERWIN-WILLIAMS.

www.synthapulvin.co.uk

Finland

Helsinki, Finland
+358 10 218 3600

France

Thouars, France
+33 (0)5 49 96 05 00

Germany

Dresden, Germany
+49 351 82991-0

Greece

Athens, Greece
+30 210 610 9930-4

Ireland

Dublin, Ireland
+353 1401 9304

Italy

Bologna, Italy
+39 051 638 0411

Poland

Debica, Poland
+48 14 680 9020

Romania

Bucharest, Romania
+40 724 275 636

Russia

Moscow, Russia
+7 495 777 2324

Serbia

Belgrade, Serbia
+381 11 40 40 507

South Africa

Durban, South Africa
+27 31 459 8400

Spain

Barcelona, Spain
+34 (0) 93 884 3442

Sweden

Märsta, Sweden
+46 (0)381 262 24

Switzerland

Bubikon, Switzerland
+41 55 253 15 15

United Kingdom

Liverpool, United Kingdom
+44 (0) 151 486 0486

United States

Minneapolis, Minnesota, USA
+1 (612) 851-7000

syntha pulvin

ARCHITECTURAL
COATING
SOLUTIONS

