



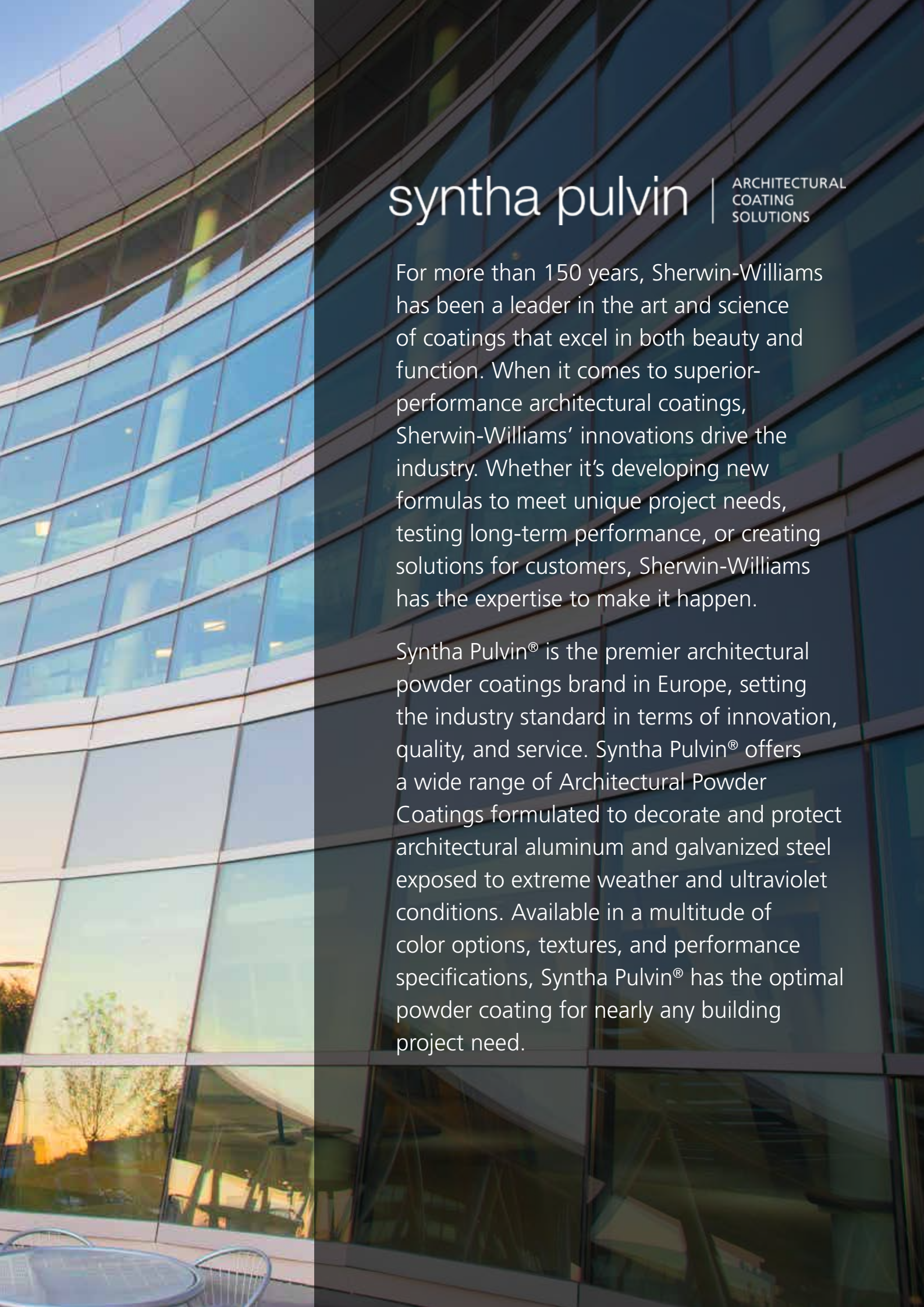
SHERWIN-WILLIAMS.

High-Performance Powder Coatings for Aluminum Building Products

syntha pulvin

ARCHITECTURAL
COATING
SOLUTIONS





syntha pulvin

ARCHITECTURAL
COATING
SOLUTIONS

For more than 150 years, Sherwin-Williams has been a leader in the art and science of coatings that excel in both beauty and function. When it comes to superior-performance architectural coatings, Sherwin-Williams' innovations drive the industry. Whether it's developing new formulas to meet unique project needs, testing long-term performance, or creating solutions for customers, Sherwin-Williams has the expertise to make it happen.

Syntha Pulvin® is the premier architectural powder coatings brand in Europe, setting the industry standard in terms of innovation, quality, and service. Syntha Pulvin® offers a wide range of Architectural Powder Coatings formulated to decorate and protect architectural aluminum and galvanized steel exposed to extreme weather and ultraviolet conditions. Available in a multitude of color options, textures, and performance specifications, Syntha Pulvin® has the optimal powder coating for nearly any building project need.

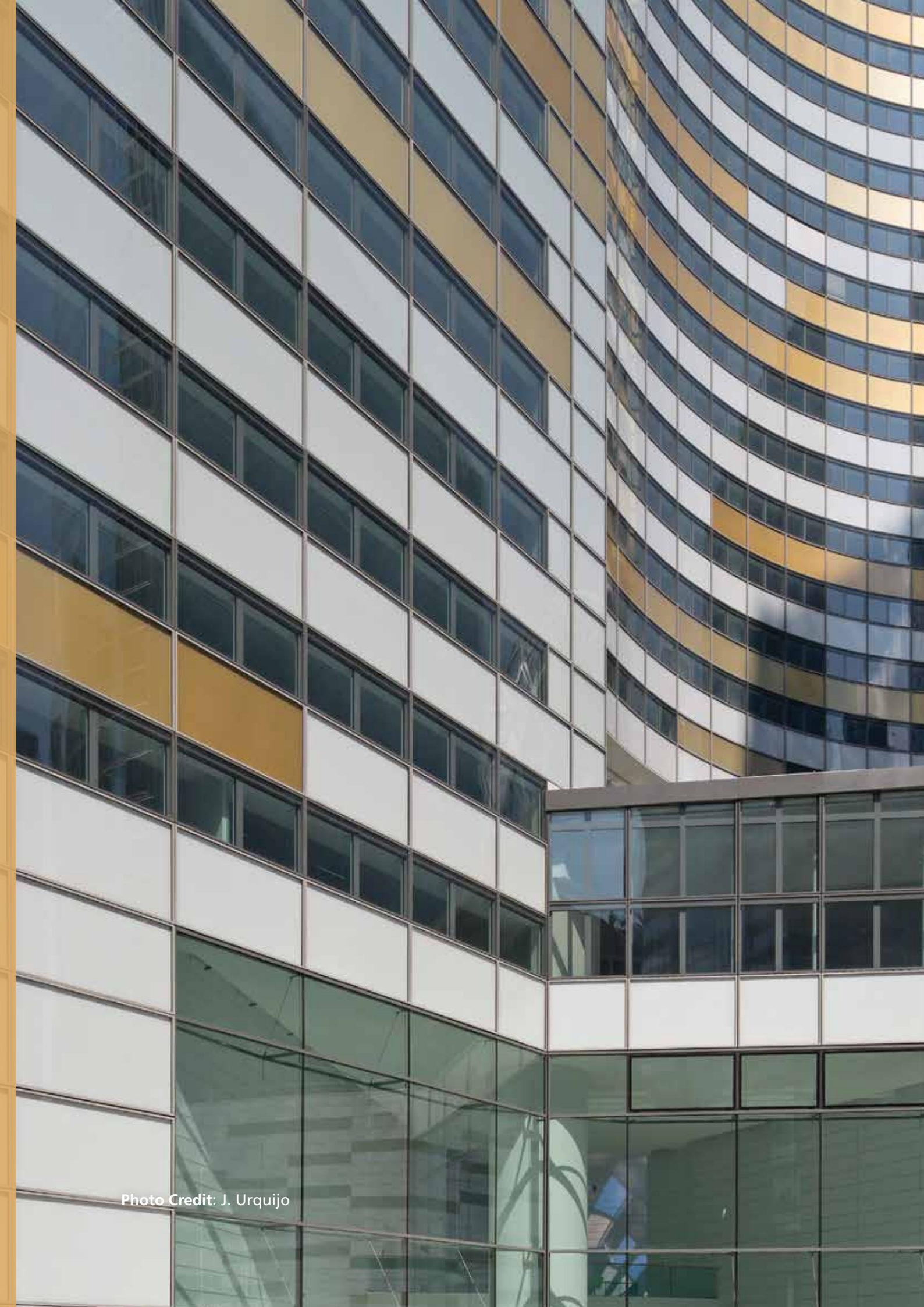


Photo Credit: J. Urquijo

Syntha Pulvin® Portfolio

Syntha Pulvin's extensive product range caters to the most demanding architectural project requirements with tried and tested raw materials that are key to meeting the highest quality standards. Specify Syntha Pulvin® by product code to ensure that your building project stays beautiful for years to come.

SYNTHA PULVIN® STANDARD RANGE | QUALICOAT CLASS 1 & GSB STANDARD

- **Syntha Pulvin® PE/P/Q – High Gloss Powder Coatings For A Timeless Finish**
Our acclaimed standard range of high-gloss powder coatings is comprised of 180 RAL colors. Many architectural projects throughout Europe are protected with Syntha Pulvin® PE/P/Q.
- **Syntha Pulvin® PE/P/S – Satin Gloss For Smooth Surfaces**
Colorful freedom of design with an elegant satin effect. In addition to its outstanding performance qualities this product line creates a fascinatingly smooth surface finish. This standard range contains 120 RAL colors.
- **Syntha Pulvin® PE/P/M – Matt Powder Coatings For Lasting Elegance**
180 striking matt RAL colors reflect our customers' multi-faceted design requirements. The unique appearance of the velvety surfaces adds to the intriguing interaction of effects within the architecture.
- **Syntha Pulvin® PE/P/Q FTX – Matt Fine Textured Coatings Create A Soft Touch**
150 trendy RAL fine-texture colors provide excellent scratch resistance and superior hiding to mask small substrate imperfections.

SYNTHA PULVIN® SUPERDURABLE RANGE | QUALICOAT CLASS 2 & GSB MASTER

- **Syntha Pulvin® PE/P/HD – Weatherproof And Durable**
This weatherproof, superior-performance product combines the entirety of our experience over the last 40 years in the development of powder coatings for architectural outdoor use. Syntha Pulvin® PE/P/HD meets the highest demands even in extreme weather conditions and UV exposure.



Collections and Effects

The beginning of the 20th century brought the emergence of color as a major focus in the urban building debate. Simple colors provided architecture with a new meaning and sense of quality, which until then had not been achieved with material features alone. Colors convey emotion and can be used in the interpretation of structures and the distinction of surfaces. Colors are emotional and the knowledge of such emotions can be applied to enhance and underline the appearance of any building.

VISION 2020

Vision 2020 represents a major breakthrough in powder coating technology focused on eco-friendly products designed for the architectural market. Vision 2020 puts our cumulative knowledge of architectural color trends at your availability. Sherwin-Williams has developed the collection Vision 2020 with the scope to convey emotion, define global cultures, awaken the spirit, stir the soul, embellish desires, and finally help all of us to evolve into the realm of color.

ANODITE

Anodite is a new generation of Architectural Polyester Powder Coatings with a smooth, low-gloss, metallic appearance designed to simulate the colors of anodizing - but with the added advantages of hiding surface imperfections and defects in the metal.

METALLIC EFFECT

Fascinating brilliance with dimensional metallic pigments. We offer more than 400 metallic colors to achieve nearly any design. Metallic effects of varying gloss levels can be formulated and produced in one-coat processes for all product lines. All metallic products are ensured by the Syntha Pulvin® bonding process to increase quality assurance and make the products more economical. Syntha Pulvin® Metallics fully comply with Qualicoat and GSB Quality Regulations in terms of their resistance to mortar and cleaning agents.

WOOD EFFECT

Wood has always been associated with providing a comfortable and harmonious living environment. Syntha Pulvin® Wood Effect Finishes are a combination of traditional and contemporary design. Sublimation as well as "Powder on Powder" coating processes can achieve extremely realistic wood grain looks for aluminum surfaces.



Lasting Durability

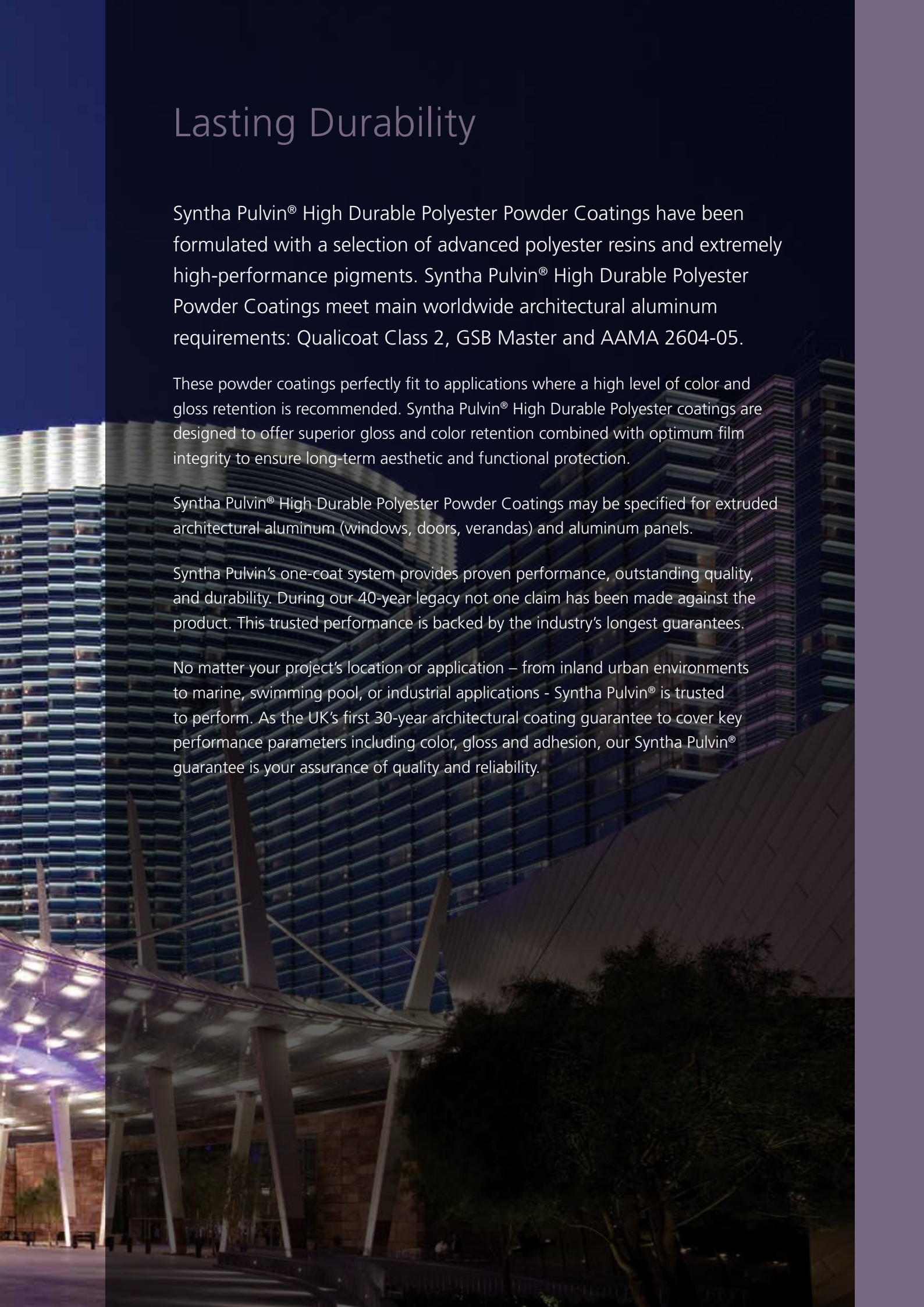
Syntha Pulvin® High Durable Polyester Powder Coatings have been formulated with a selection of advanced polyester resins and extremely high-performance pigments. Syntha Pulvin® High Durable Polyester Powder Coatings meet main worldwide architectural aluminum requirements: Qualicoat Class 2, GSB Master and AAMA 2604-05.

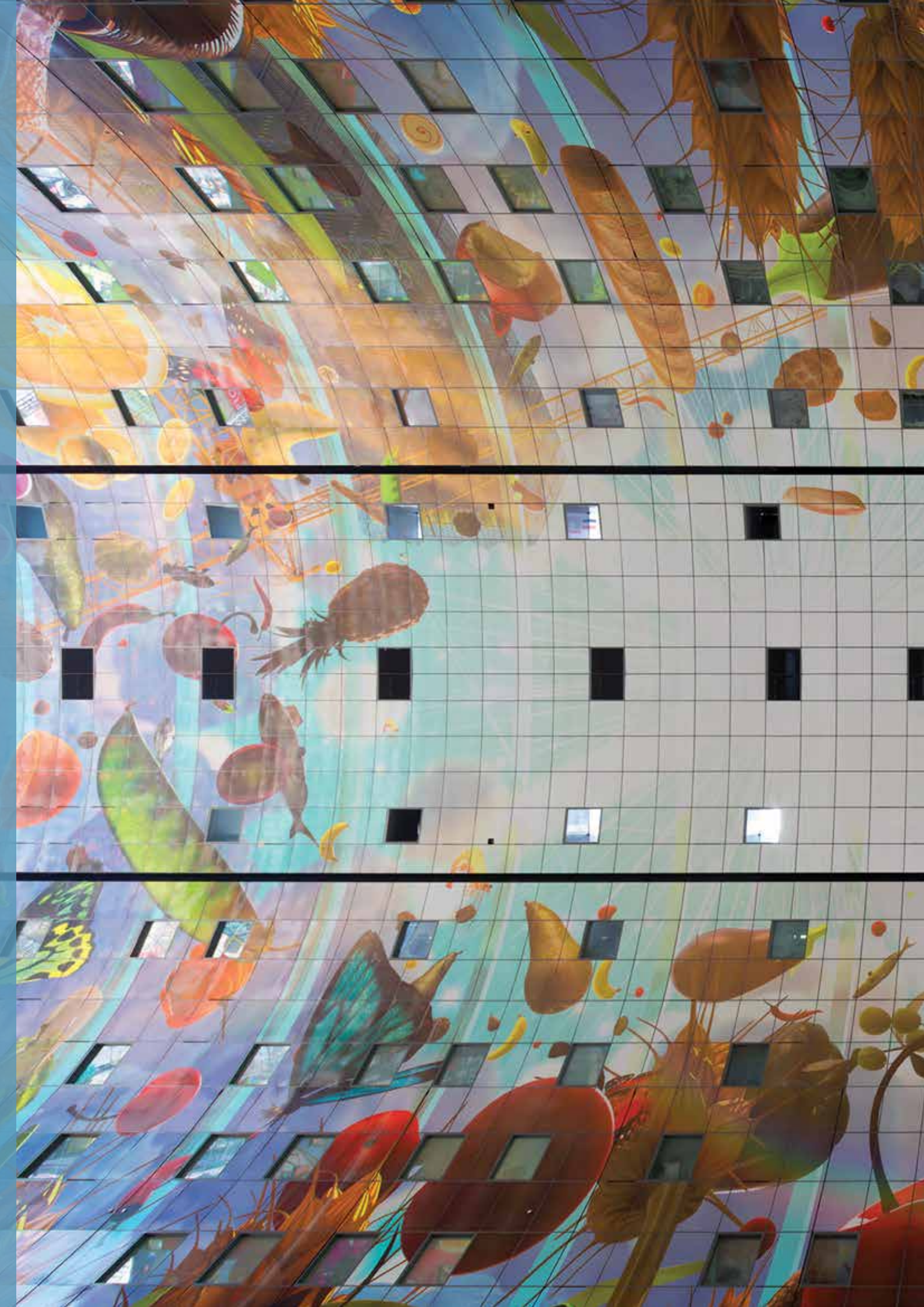
These powder coatings perfectly fit to applications where a high level of color and gloss retention is recommended. Syntha Pulvin® High Durable Polyester coatings are designed to offer superior gloss and color retention combined with optimum film integrity to ensure long-term aesthetic and functional protection.

Syntha Pulvin® High Durable Polyester Powder Coatings may be specified for extruded architectural aluminum (windows, doors, verandas) and aluminum panels.

Syntha Pulvin's one-coat system provides proven performance, outstanding quality, and durability. During our 40-year legacy not one claim has been made against the product. This trusted performance is backed by the industry's longest guarantees.

No matter your project's location or application – from inland urban environments to marine, swimming pool, or industrial applications - Syntha Pulvin® is trusted to perform. As the UK's first 30-year architectural coating guarantee to cover key performance parameters including color, gloss and adhesion, our Syntha Pulvin® guarantee is your assurance of quality and reliability.





Applicator Network

Syntha Pulvin® will have a network of Approved Applicators and In-House Users. Each of the Approved Applicators and In-House Users is required to pass rigorous testing procedures to gain Approved Applicator status.

ALL APPROVED APPLICATORS AND IN-HOUSE USERS MUST HOLD ISO 9001 APPROVAL

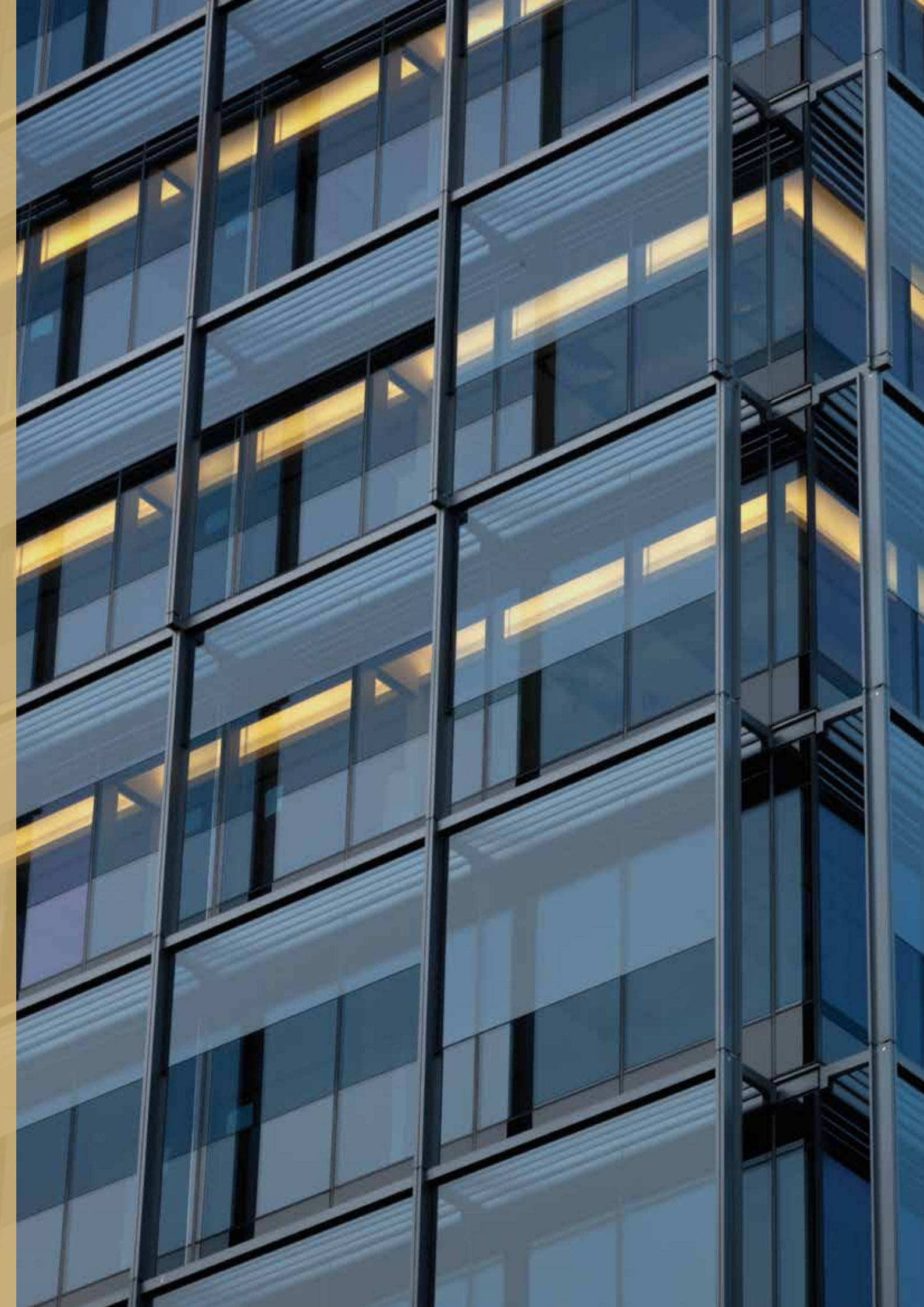
Each potential applicator must pass a 12-week program of testing designed to ensure that quality of pretreatment, surface appearance, color, gloss, curing, corrosion resistance, and adhesion to substrate all meet BS6496 and our own criteria.

Examples of the potential applicator's previous work are examined for quality and durability. A full audit of the potential applicator's process and quality management systems is carried out by Sherwin-Williams inspectors.

Following approval, each Approved Applicator and In-House User is audited at regular intervals by Sherwin-Williams inspectors to ensure continued compliance with the requirements supplied in the Syntha Pulvin® Technical Manual.

THE DIFFERENCE BETWEEN AN APPROVED APPLICATOR AND AN IN-HOUSE USER

An In-House User only applies Syntha Pulvin® to products it manufactures or fabricates, i.e. glazing systems, curtain walling, etc. Approved Applicators do not manufacture products – they are specialist powder coaters who apply coatings to components supplied to them.





BIM - Building Information Modeling

Simplify Architectural Coating Specifications

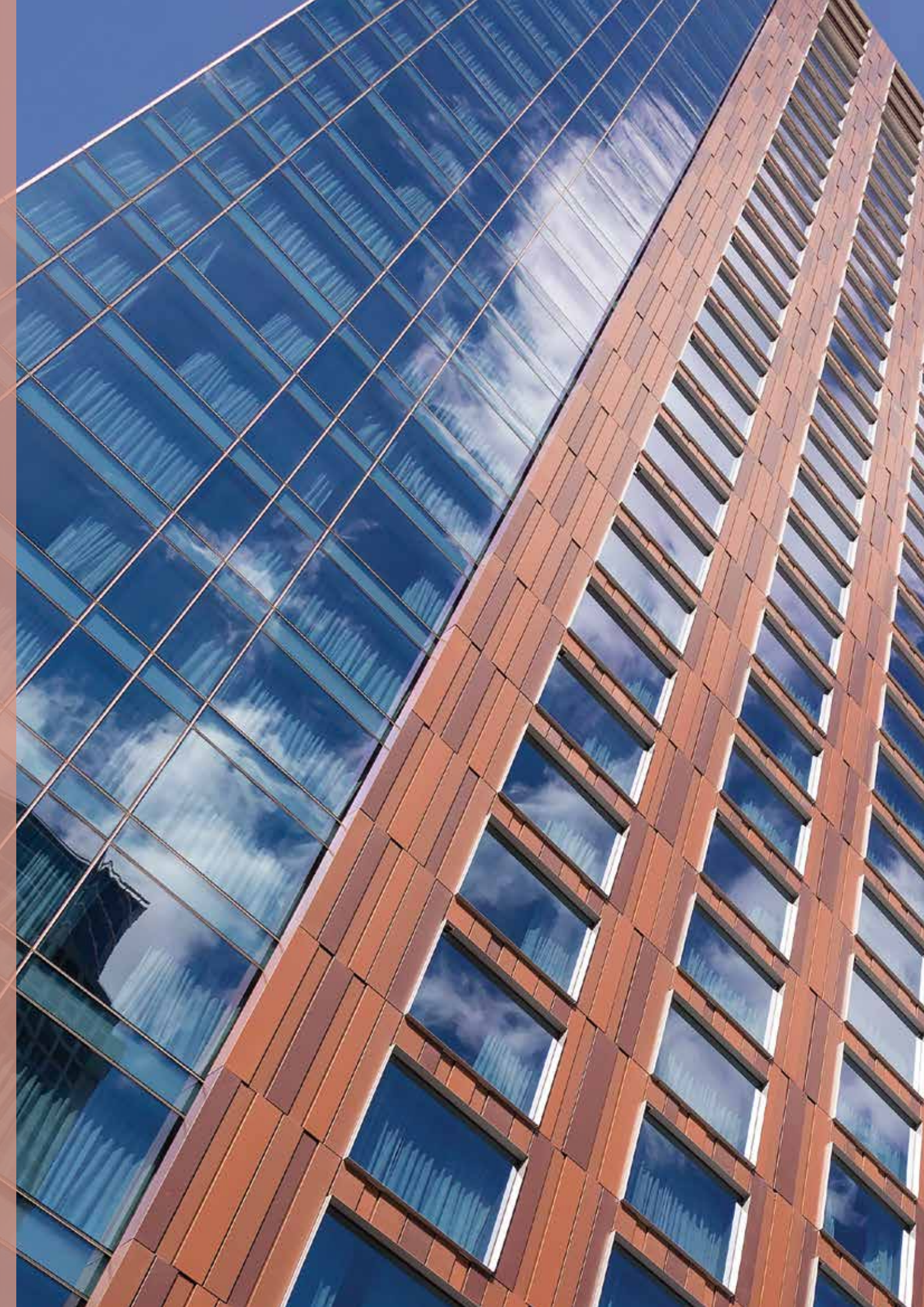
SHERWIN-WILLIAMS' SYNTHA PULVIN® MATERIAL LIBRARY FOR AUTODESK REVIT

Choosing the right color for a major architectural project can be a daunting task. Color can make or break your design. With Sherwin-Williams' Syntha Pulvin® material library for Autodesk Revit, previewing color selections for exterior metal coatings has never been easier. Sherwin-Williams' BIM objects allow you to see how yellow curtainwall framing contrasts with a blue wall panel system, how a white metal roof matches the skylight framing, or how bright purple window framing pops next to a red entrance system.

Whether you're looking to apply a Syntha Pulvin® color to your BIM model or wondering how to specify it, Sherwin-Williams is here to help.

Browse our project gallery to get inspired and easily order physical color samples right from our website. You can even request one of our experts to give a "Lunch and Learn" at your architectural firm.

Whatever your coating need, Sherwin-Williams is on it.





Sustainability

Sherwin-Williams is always working to incorporate the best practices and materials into our coatings - it has been part of our culture of innovation for more than 150 years.

Today we are focused on creating innovative products and manufacturing techniques that protect air and water quality while reducing the unnecessary consumption of natural resources.

Sherwin-Williams delivers the green advantage by fulfilling our agenda to introduce bio-renewables, incorporate recycled materials, lower VOCs, decrease energy consumption, reduce waste, eliminate the use of hazardous materials, and show the industry that all this can be accomplished cost-effectively.

SHERWIN-WILLIAMS' HISTORY OF INNOVATION

Over a decade of advancing our use of non-depletable, naturally replenishable and recycled materials has yielded extraordinary results. In fact, methods behind our technology have been patented.

We are fulfilling our green agenda, demonstrating that Sherwin-Williams will continue to be a leader in the metal coatings industry for decades to come. Sherwin-Williams was one of the first to recognize the importance of environmentally friendly coatings and since the seventies has worked on the manufacture and development of powder coatings as a key priority. Today the group is one of the largest and most popular suppliers of powder coatings throughout Europe.

Sherwin-Williams powder coatings are 100% solids and do not contain any solvents. Additionally our coatings are free from any pigments that contain heavy metals. Sherwin-Williams powder coatings are TGIC-free and are based on weather-resistant polyester to ensure optimum protection of the natural as well as the working environment.

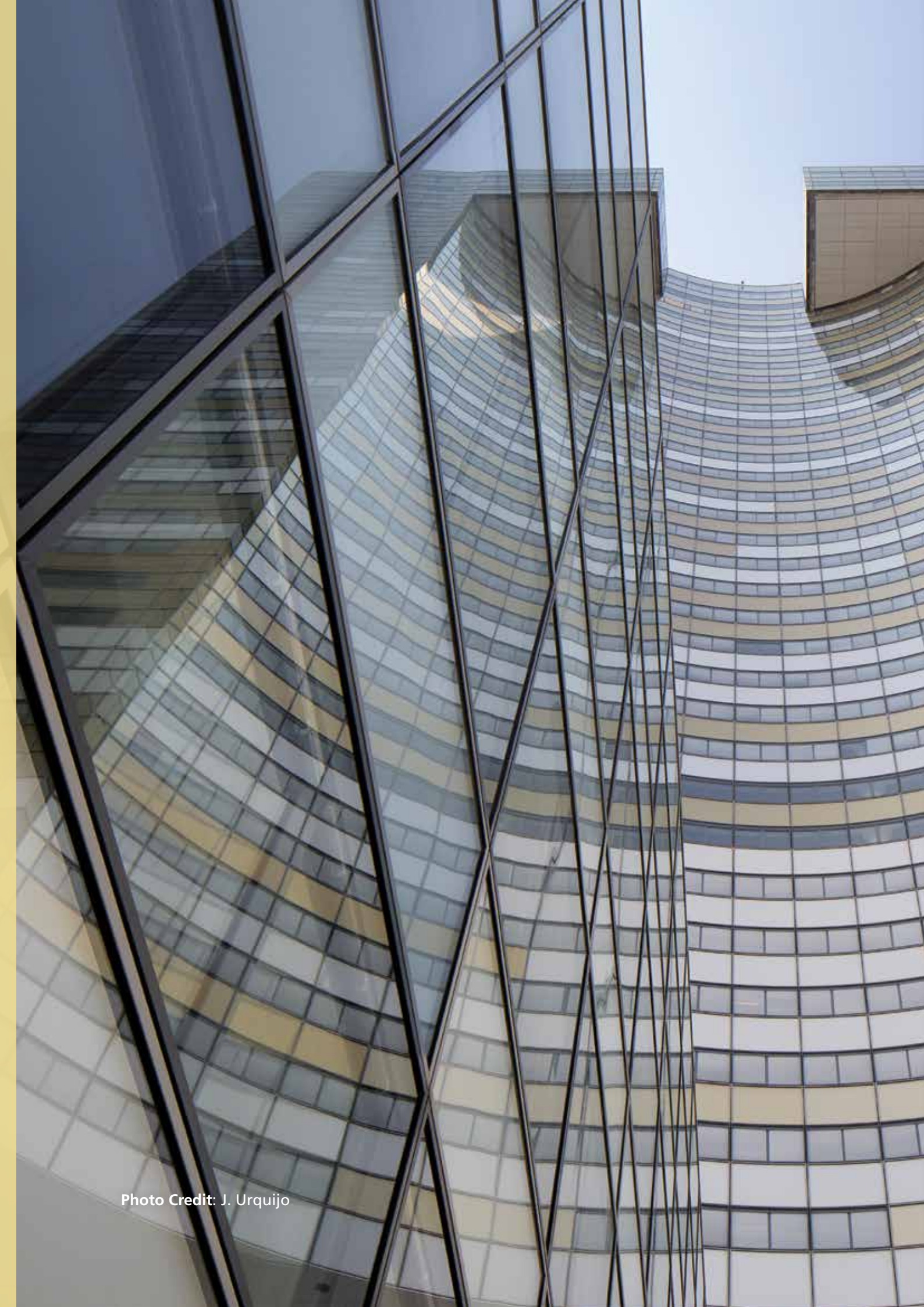


Photo Credit: J. Urquijo

Contact Us

SHERWIN-WILLIAMS.

www.synthapulvin.co.uk

Finland

Vantaa, Finland
+358 207 501 753

France

Thouars, France
+33 (0)5 49 96 05 00

Germany

Dresden, Germany
+49 351 82991-0

Greece

Athens, Greece
+30 210 610 9930-4

Ireland

Dublin, Ireland
+353 1401 9304

Italy

Bologna, Italy
+39 051 638 0411

Poland

Debica, Poland
+48 14 680 9020

Romania

Bucharest, Romania
+40 724 275 636

Russia

Moscow, Russia
+7 495 777 2324

Serbia

Belgrade, Serbia
+381 11 40 40 507

South Africa

Durban, South Africa
+27 31 459 8400

Spain

Barcelona, Spain
+34 (0) 93 884 3442

Switzerland

Bubikon, Switzerland
+41 55 253 15 15

United Kingdom

Liverpool, United Kingdom
+44 (0) 151 486 0486

United States

Minneapolis, Minnesota, USA
+1 (612) 851-7000

syntha pulvin

ARCHITECTURAL
COATING
SOLUTIONS







Photo Credit: J. Urquijo