

POWDURA[®] POWDER COATINGS

COATINGS COLOR GUIDE



SHERWIN-WILLIAMS

oem.sherwin-williams.com or call (855) 806-6846

POWDURA® POWDER COATINGS

When does a powder coating become a finishing solution?
When it is a Sherwin-Williams Powdura® Powder Coating.

Sherwin-Williams Powdura® Powder Coatings offer the breadth and flexibility you need for your finishing requirements. Powdura coatings offer a wide assortment of in-stock colors and textures, as well as special effect finishes and custom colors available just-in-time. With the benefits of the largest distribution platform in the industry, an expanding global presence, and a commitment to providing value-added services and support, Sherwin-Williams is your total finishing solution.

WHERE POWDURA® POWDER COATINGS ARE USED

- Fencing
- Lawn Equipment
- Outdoor Dining Sets
- Playground Materials
- Steel Fabrication

TECHNOLOGIES

EPOXY

Epoxy powder coatings are the technology of choice for high-performance applications, and Powdura Epoxy Coatings will meet or exceed most performance expectations. These coatings combine outstanding salt spray resistance and excellent chemical performance with exceptional film hardness. Our epoxy coatings are often selected for functional or corrosion-inhibiting applications, such as industrial equipment, under-hood automotive, pipe coatings, or primers. In addition to outstanding performance, finishers can also benefit from a wide range of cure capabilities.

HYBRID

When you desire the mechanical film properties of an epoxy, but prefer the overbake stability of a polyester, hybrid technology is an excellent solution. Powdura Hybrid Powder Coatings provide the benefit of the combined technologies with exceptional transfer efficiency — giving you the ability to completely cover and protect many hard-to-coat parts. As the proven choice for many finishers, common end uses for Powdura Hybrid Powder Coatings include metal office furniture, store fixtures, electronic cabinetry, and racking.

POLYESTER URETHANE

Polyester urethane technology provides a finish that lasts, and Powdura Polyester Urethane Coatings are no exception. Combining exceptional resistance to weathering and UV light with a unique high-definition finish, Powdura Polyester Urethanes are an excellent choice for finishing lawn and garden equipment, outdoor furniture, electronic enclosures, and automotive components.

TGIC AND TGIC-FREE POLYESTER

Polyester powder coatings are the optimal choice when versatility is critical, and Powdura Polyester Coatings provide coating solutions for a wide range of applications and finishers. Available in TGIC and TGIC-Free formulations, Powdura Polyester Coatings combine excellent color and gloss retention, with great overbake stability and high-quality mechanical properties — making them ideal for a wide range of applications, including electronic cabinetry, case goods, fencing, metal building products, lighting, furniture, and heavy equipment.

NSF

Powdura NSF Certified Powder Coatings are specially formulated to meet the performance standards of the National Sanitation Foundation (NSF) International organization.

- NSF 51 products are certified hybrid and epoxy powder coatings that may have incidental contact with food products, and are suitable for applications that include food displays and processing equipment.
- NSF 61 products are certified epoxy powder coatings used as single-coat applications for valves, fittings, pipes and tanks used to distribute potable water.

UL

We understand that obtaining UL approval can be critical for a wide range of products, and Sherwin-Williams produces a multitude of solutions that have been approved by Underwriters Laboratories. If you have a need for such a product, contact your local Sales Representative and they can help you select the optimal coating to meet your needs.

RAL

Featuring 188 solid, high gloss and satin sheen colors in Super Durable TGIC-Free Polyester technology, we deliver the exact color you need with short lead times and fast turnaround to meet your tight deadlines. Sherwin-Williams liquid coatings can also be custom-ordered in many RAL colors to provide a wide range of coating solutions for a variety of substrates requiring both liquid and powder finishes.

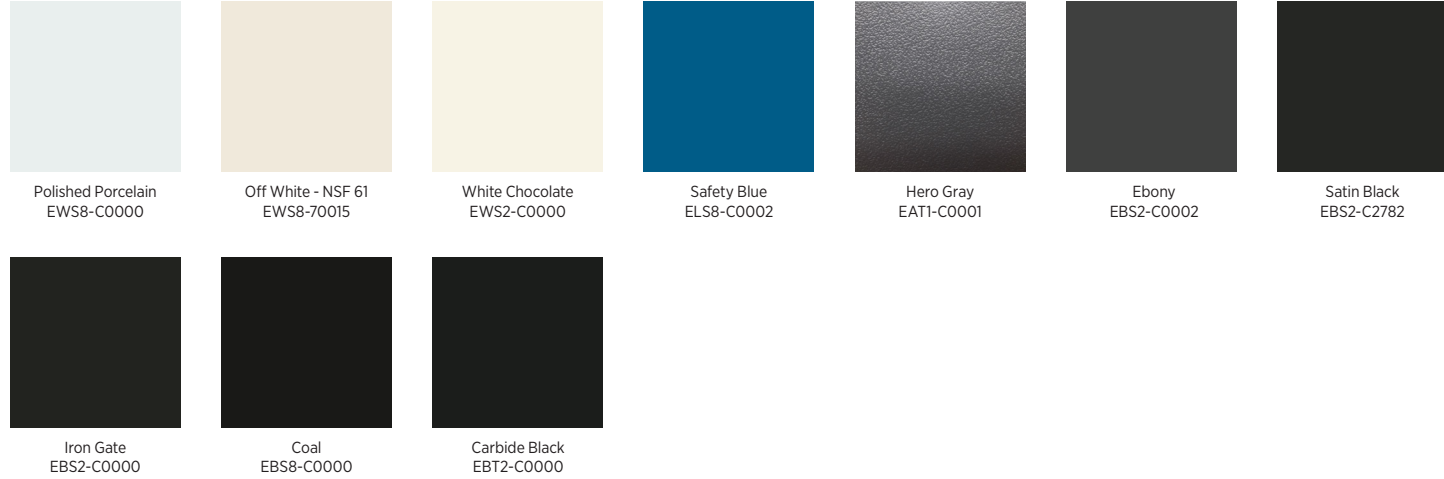
ADDITIONAL POWDURA PRODUCTS/TECHNOLOGIES INCLUDE SUPER DURABLE POLYESTERS, SUPER DURABLE URETHANES, SPECIAL EFFECTS, SUCH AS SPICE AND METALLICS, MIL-SPEC APPROVALS, AND COATINGS THAT MEET AAMA SPECIFICATIONS 2603, 2604 AND 2605.

POWDER COATINGS COVERAGE CHART

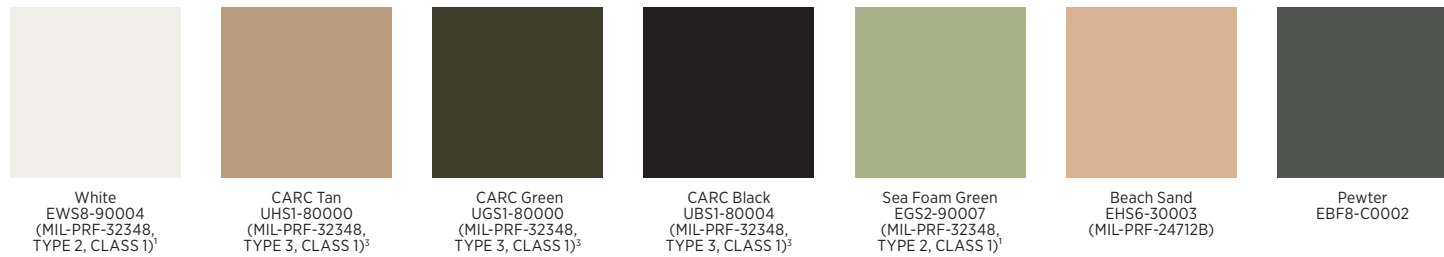
(IN SQUARE FEET PER POUND AT 100% EFFICIENCY)									
Specific Gravity*	FILM THICKNESS								
	1.0 mils	1.5 mils	2.0 mils	2.5 mils	3.0 mils	3.5 mils	4.0 mils	4.5 mils	5.0 mils
1.00	192.3	128.2	96.2	76.9	64.1	54.9	48.1	42.7	38.5
1.05	183.1	122.1	91.6	73.3	62.0	52.3	45.8	40.7	36.6
1.10	174.8	116.5	87.4	69.9	58.3	49.9	43.7	38.8	35.0
1.15	167.2	111.5	83.6	66.9	55.7	47.8	41.8	37.2	33.4
1.20	160.3	106.8	80.1	64.1	53.4	45.8	40.1	35.6	32.1
1.25	153.8	102.6	76.9	61.5	51.3	44.0	38.5	34.2	30.8
1.30	147.9	98.6	74.0	59.2	49.3	42.3	37.0	32.9	29.6
1.35	142.4	95.0	71.2	57.0	47.5	40.7	35.6	31.7	28.5
1.40	137.4	91.6	68.7	54.9	45.8	39.2	34.3	30.5	27.5
1.45	132.6	88.4	66.3	53.0	44.2	37.9	33.2	29.5	26.5
1.50	128.2	85.5	64.1	51.3	42.7	36.6	32.1	28.5	25.6
1.55	124.1	82.7	62.0	46.9	41.4	35.4	31.0	27.6	24.8
1.60	120.2	80.1	60.1	48.1	40.1	34.3	30.0	26.7	24.0
1.65	116.5	77.7	58.3	46.6	38.8	33.3	29.1	25.9	23.3
1.70	113.1	75.4	56.6	45.2	37.7	34.3	28.3	25.1	22.6
1.75	109.9	73.3	54.9	44.0	36.6	31.4	27.5	24.4	22.0
1.80	106.8	71.2	53.4	42.7	35.6	30.5	26.7	23.7	21.4
1.85	103.9	69.3	52.0	41.6	34.6	29.7	26.0	23.1	20.8
1.90	101.2	67.5	50.6	40.5	33.7	28.9	25.3	22.5	20.2
1.95	98.6	65.7	49.3	39.4	32.9	28.2	24.7	21.9	19.7
2.00	96.2	64.1	48.1	38.5	32.1	27.5	24.0	21.4	19.2
2.10	91.6	61.0	45.8	36.6	30.5	26.2	22.9	20.3	18.3
2.20	87.4	58.3	43.7	35.0	29.1	25.0	21.9	19.4	17.5
2.30	83.6	55.7	41.8	33.4	27.9	23.9	20.9	18.6	16.7
2.40	80.1	53.4	40.1	32.1	26.7	22.9	20.0	17.8	16.0
2.50	76.9	51.3	38.5	30.8	25.6	22.0	19.2	17.1	15.4
2.60	74.0	49.3	37.0	29.6	24.7	21.1	18.5	16.4	14.8
2.70	71.2	47.5	35.6	28.5	23.7	20.3	17.8	15.8	14.2

*Specific Gravity: Ratio of the weight of a given volume of liquid or solid to the weight of an equal volume of water. (ASTM D 3451)

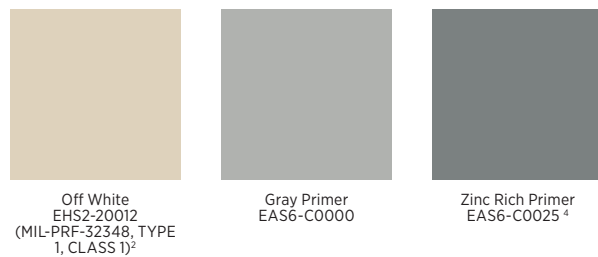
EPOXY



SPECIALTIES



PRIMER

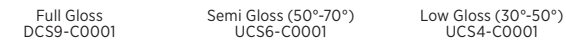


URETHANE



CLEARCOAT

Clear topcoats are typically used as an added layer of protection. Clear topcoats are common over powders with Aluminum or Mica, and are used to inhibit premature gloss and/or color changes. Testing is recommended to confirm acceptability.



READYMATCH[®] TOUCHUP

Regardless of finish application or color, Sherwin-Williams has your touch-up solution with ReadyMatch[®]. Available in stock and custom colors, ReadyMatch aerosols make touch-up easier and more efficient. For more information on the benefits of this and other solutions Sherwin-Williams can provide, please contact your local representative.

¹ Epoxy Powder Primer / Interior Use Only. NOT intended for use under Chemical Agent Resistant Finish Coatings (CARC)

² Epoxy Powder Primer for use with Chemical Agent Resistant Finish Coatings (CARC)

³ For use as a camouflage, Chemical Agent Resistant Finish Coating (CARC)

⁴ Coating conforms to MIL-PRF-32550, Type 3 Form A

PLEASE NOTE: Exterior applications are not recommended for Epoxy or Hybrid products.

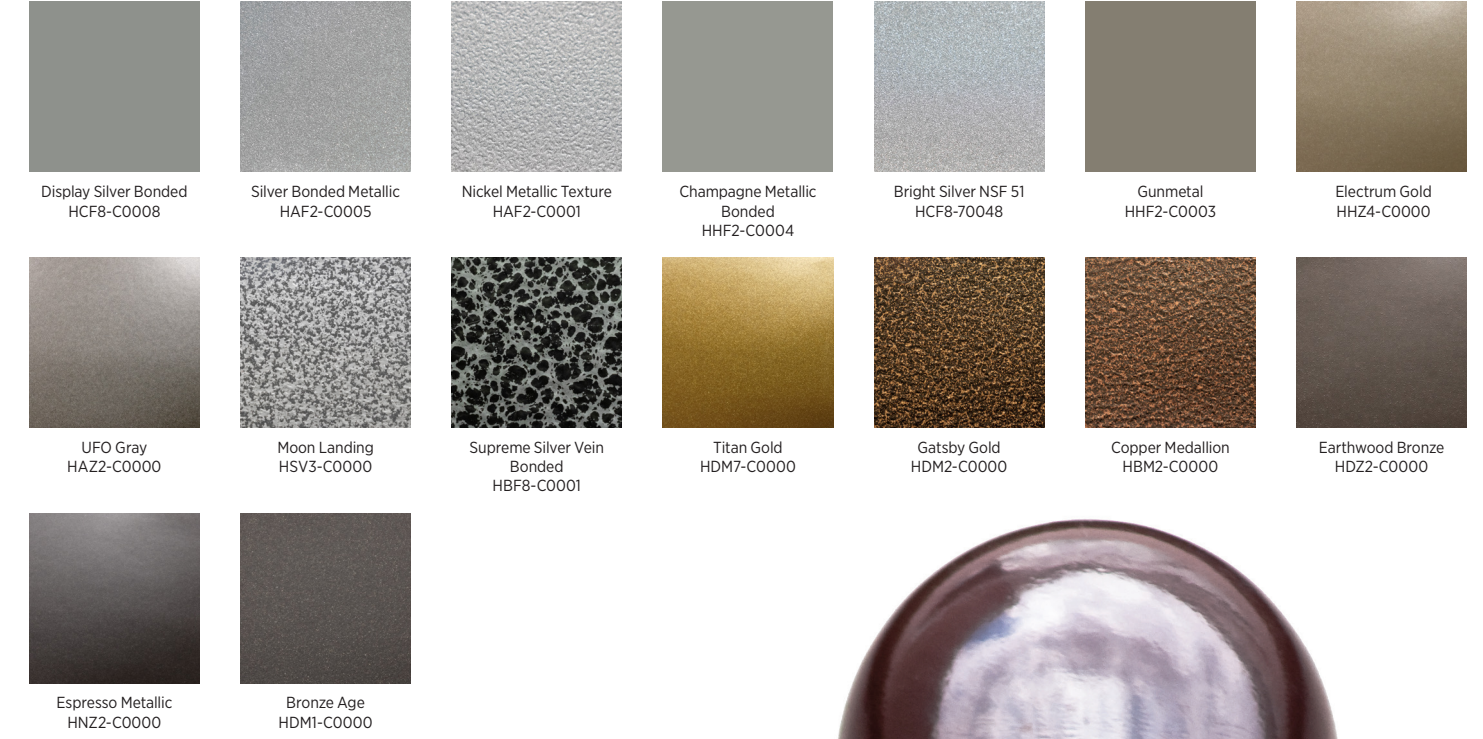
OEM specified and approved finishes are available. Please contact your Sherwin-Williams Representative for details.

Due to the printing process, colors shown approximate as closely as possible to the actual paint colors. Colors are provided by the Sherwin Williams Company.

HYBRID



HYBRID METALLIC



With the largest North American distribution platform in the industry and an ever-expanding global presence, Sherwin-Williams can provide the products you need when and where you need them. Our Powdura® Powder Coatings come in a virtually limitless array of colors and textures, making it easy to get the exact look and feel your customers want. Combine that with our excellent onsite technical support, and Sherwin-Williams is your total finishing solution.

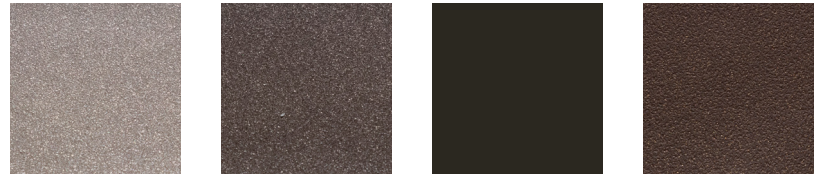
POLYESTER TGIC & TGIC - FREE



POLYESTER TGIC METALLIC



Sport Silver Bonded PAF8-C0007 Silver Metallic PAM8-C0000 Silver Mist PSZ4-C0001 Quicksilver PSZ7-C0001 Silver Fox PSZ7-C0000 Quantum Silver PSZ2-C0000 Champagne Bubbles PSZ5-C0000



Blush Pearl PSZ4-C0000 Rose Bronze PDZ5-C0000 Penny Vein PBM8-C0001 Oil Rubbed Bronze PDM1-C0001



SUPER DURABLE TGIC & TGIC-FREE



Plaster of Paris DWS9-C0000 Winter White DWS9-C0001 Pebble Beach DAS6-C0000 ANSI 70 Gray DAS6-C0002 Recreational Gray DAS5-C0001 Cryptic DAS6-C0001 Gunmetal Gray DAS8-C0000



Castle Rock DAS8-C0001 SD TGIC-Free Equipment Blue RLS8-C0001 (TGIC FREE) SD TGIC-Free Equipment Yellow RYS8-C0001 (TGIC FREE) Yield DYS8-C0002 SD Equipment Yellow DYS8-C0001 Valentine DRS8-C0002 SD Equipment Red DRS8-C0001

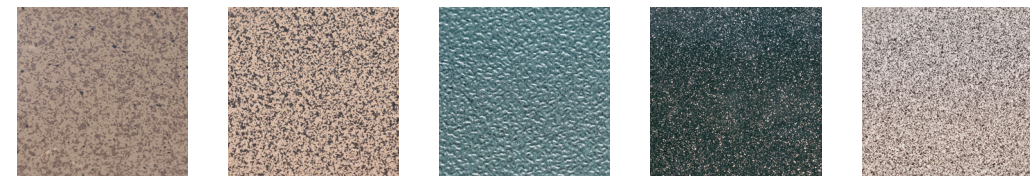


SD Tractor Green DGS9-C0000 Smooth Green DGS7-C0000 Silvertone DAZ4-C0000 Anthracite DBR2-C0000 Cassiterite DSZ1-C0000 Metamorphic Rock DAZ6-C0001 Medium Gloss Black DBS6-C0026



Black Widow DBB3-C0000 Pompeian Gold DDM1-C0000 Mineral Bronze DDZ4-C0000

SPICE / BLEND



Sequoia Sand PHB2-C0000 Snakeskin PHB8-C0005 Verdigris UGB2-C0000 Green Marble UGB8-C0000 Granite UAB4-C0004

OBSESSED WITH YOUR LEGACY

Your designs are your legacy — protect it with powder coatings from a company with more than 150 years of success. Build your legacy by contacting your local Sherwin-Williams Representative today.

At Sherwin-Williams, we think about industrial finishing differently, continuously seeking the perfect solution to help your products win over your customers. Whether you need the most rugged and protective coating, a technical expert to provide answers and hands-on support, consistently perfect color in just the right gloss, or a custom solution created just for you — we are here to help. We are Sherwin-Williams General Industrial Coatings, and we are obsessed with giving you the competitive edge.

oem.sherwin-williams.com or call (855) 806-6846