

POWDURA[®] POWDER COATINGS

COATINGS COLOR GUIDE



SHERWIN-WILLIAMS

oem.sherwin-williams.com or call (855) 806-6846

POWDURA[®] POWDER COATINGS

VISUALIZE THE POSSIBILITIES OF POWDER.
YOUR UNIQUE COATING SOLUTION AWAITS.

Sherwin-Williams Powdura Powder Coatings offer the breadth and flexibility needed for your finishing operation. Powdura coatings offer a wide assortment of in-stock colors and textures, as well as special effect finishes and custom colors available just-in-time. With the benefits of the largest distribution platform in the industry, an expanding global presence, and a commitment to providing value-added services and support, Sherwin-Williams is your total finishing solution.

WHERE POWDURA POWDER COATINGS ARE USED

- Fencing
- Lawn Equipment
- Outdoor Dining Sets
- Playground Materials
- Steel Fabrication

TECHNOLOGIES

EPOXY

Epoxy powder coatings are the technology of choice for high-performance applications, and Powdura Epoxy Coatings will meet or exceed most performance expectations. These coatings combine outstanding salt spray resistance and excellent chemical performance with exceptional film hardness. Our epoxy coatings are often selected for functional or corrosion-inhibiting applications, such as industrial equipment, under-hood automotive, pipe coatings or primers. In addition to outstanding performance, finishers can also benefit from a wide range of cure capabilities.

HYBRID

When you desire the mechanical film properties of an epoxy, but prefer the overbake stability of a polyester, hybrid technology is an excellent solution. Powdura Hybrid Powder Coatings combine the technologies with exceptional transfer efficiency — giving you the ability to completely cover and protect many hard-to-coat parts. As the proven choice for many finishers, common end uses for Powdura Hybrid Powder Coatings include metal office furniture, store fixtures, electronic cabinetry and racking.

POLYESTER URETHANE

Polyester urethane technology provides a finish that lasts, and Powdura Polyester Urethane Coatings are no exception. Combining exceptional resistance to weathering and UV light with a unique high-definition finish, Powdura Polyester Urethanes are an excellent choice for finishing lawn and garden equipment, outdoor furniture, electronic enclosures and automotive components.

TGIC AND TGIC-FREE POLYESTER

Polyester powder coatings are the optimal choice when versatility is critical, and Powdura Polyester Coatings provide coating solutions for a wide range of applications and finishers. Available in TGIC and TGIC-Free formulations, Powdura Polyester Coatings combine excellent color and gloss retention with great overbake stability and high-quality mechanical properties — making them ideal for various applications, including electronic cabinetry, case goods, fencing, metal building products, lighting, furniture and heavy equipment.

NSF

Powdura NSF-Certified Powder Coatings are specially formulated to meet the performance standards of the National Sanitation Foundation (NSF) International organization.

- NSF 51 products are certified hybrid and epoxy powder coatings that may have incidental contact with food products, and are suitable for applications that include food displays and processing equipment.
- NSF 61 products are certified epoxy powder coatings used as single-coat applications for valves, fittings, pipes and tanks used to distribute potable water.

UL

We understand that obtaining Underwriters Laboratories (UL) approval can be critical for a wide range of products, and Sherwin-Williams produces a multitude of solutions that have been approved by UL. If you need such a product, contact your local sales representative and they can help you select the optimal coating to meet your requirements.

RAL

Featuring 188 solid, high-gloss and satin sheen colors in Super Durable TGIC-Free Polyester technology, we deliver the exact color you need and fast turnaround to meet your tight deadlines. Sherwin-Williams liquid coatings can also be custom-ordered in many RAL colors to provide a wide range of coating solutions for a variety of substrates requiring both liquid and powder finishes.

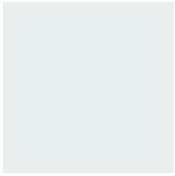
ADDITIONAL POWDURA PRODUCTS/TECHNOLOGIES INCLUDE SUPER DURABLE POLYESTERS, SUPER DURABLE URETHANES, SPECIAL EFFECTS, SUCH AS SPICE AND METALLICS, MIL-SPEC APPROVALS, AND COATINGS THAT MEET AAMA SPECIFICATIONS 2603, 2604 AND 2605.

POWDER COATINGS COVERAGE CHART

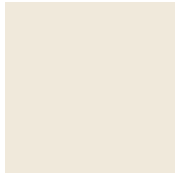
(IN SQUARE FEET PER POUND AT 100% EFFICIENCY)									
Specific Gravity*	FILM THICKNESS								
	1.0 mils	1.5 mils	2.0 mils	2.5 mils	3.0 mils	3.5 mils	4.0 mils	4.5 mils	5.0 mils
1.00	192.3	128.2	96.2	76.9	64.1	54.9	48.1	42.7	38.5
1.05	183.1	122.1	91.6	73.3	62.0	52.3	45.8	40.7	36.6
1.10	174.8	116.5	87.4	69.9	58.3	49.9	43.7	38.8	35.0
1.15	167.2	111.5	83.6	66.9	55.7	47.8	41.8	37.2	33.4
1.20	160.3	106.8	80.1	64.1	53.4	45.8	40.1	35.6	32.1
1.25	153.8	102.6	76.9	61.5	51.3	44.0	38.5	34.2	30.8
1.30	147.9	98.6	74.0	59.2	49.3	42.3	37.0	32.9	29.6
1.35	142.4	95.0	71.2	57.0	47.5	40.7	35.6	31.7	28.5
1.40	137.4	91.6	68.7	54.9	45.8	39.2	34.3	30.5	27.5
1.45	132.6	88.4	66.3	53.0	44.2	37.9	33.2	29.5	26.5
1.50	128.2	85.5	64.1	51.3	42.7	36.6	32.1	28.5	25.6
1.55	124.1	82.7	62.0	46.9	41.4	35.4	31.0	27.6	24.8
1.60	120.2	80.1	60.1	48.1	40.1	34.3	30.0	26.7	24.0
1.65	116.5	77.7	58.3	46.6	38.8	33.3	29.1	25.9	23.3
1.70	113.1	75.4	56.6	45.2	37.7	34.3	28.3	25.1	22.6
1.75	109.9	73.3	54.9	44.0	36.6	31.4	27.5	24.4	22.0
1.80	106.8	71.2	53.4	42.7	35.6	30.5	26.7	23.7	21.4
1.85	103.9	69.3	52.0	41.6	34.6	29.7	26.0	23.1	20.8
1.90	101.2	67.5	50.6	40.5	33.7	28.9	25.3	22.5	20.2
1.95	98.6	65.7	49.3	39.4	32.9	28.2	24.7	21.9	19.7
2.00	96.2	64.1	48.1	38.5	32.1	27.5	24.0	21.4	19.2
2.10	91.6	61.0	45.8	36.6	30.5	26.2	22.9	20.3	18.3
2.20	87.4	58.3	43.7	35.0	29.1	25.0	21.9	19.4	17.5
2.30	83.6	55.7	41.8	33.4	27.9	23.9	20.9	18.6	16.7
2.40	80.1	53.4	40.1	32.1	26.7	22.9	20.0	17.8	16.0
2.50	76.9	51.3	38.5	30.8	25.6	22.0	19.2	17.1	15.4
2.60	74.0	49.3	37.0	29.6	24.7	21.1	18.5	16.4	14.8
2.70	71.2	47.5	35.6	28.5	23.7	20.3	17.8	15.8	14.2

*Specific Gravity: Ratio of the weight of a given volume of liquid or solid to the weight of an equal volume of water. (ASTM D3451)

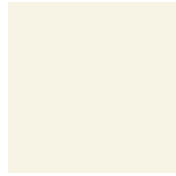
EPOXY



Polished Porcelain
EWS8-C0000



Off White - NSF 61
EWS8-70015



White Chocolate
EWS2-C0000



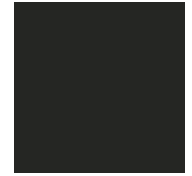
Safety Blue
ELS8-C0002



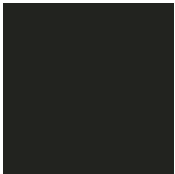
Hero Gray
EAT1-C0001



Ebony
EBS2-C0002



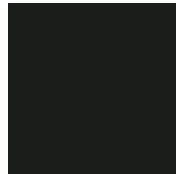
Satin Black
EBS2-C2782



Iron Gate
EBS2-C0000

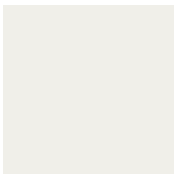


Coal
EBS8-C0000



Carbide Black
EBT2-C0000

SPECIALTIES



White
EWS8-90004
(MIL-PRF-32348,
TYPE 2, CLASS 1)¹



CARC Tan
UHS1-80000
(MIL-PRF-32348,
TYPE 3, CLASS 1)³



CARC Green
UGS1-80000
(MIL-PRF-32348,
TYPE 3, CLASS 1)³



CARC Black
UBS1-80004
(MIL-PRF-32348,
TYPE 3, CLASS 1)³



Sea Foam Green
EGS2-90007
(MIL-PRF-32348,
TYPE 2, CLASS 1)¹



Beach Sand
EHS6-30003
(MIL-PRF-24712B)



Pewter
EBF8-C0002

PRIMER



Off White
EHS2-20012
(MIL-PRF-32348, TYPE
1, CLASS 1)²

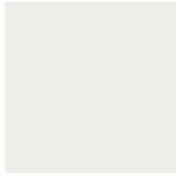


Gray Primer
EAS6-C0000

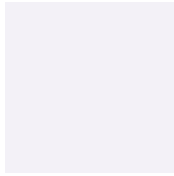


Zinc Rich Primer
EAS6-C0025 ⁴

URETHANE



Sky White
UWS8-C0017



Furniture White
UWS8-C0002



Unicream
UHS8-C0000



Chrome Classic -
Bonded Metallic
UCF8-C0002*



Chromal Bonded
Metallic
UCF8-C0001*



Racing Red
URS8-C0000



Super Hero Red
(Super Durable Urethane)
KRS9-C0000



Regal Yellow
UYS8-C0010



Electric Blue
ULS8-C0003



Tractor Green
UGS8-C0001



Weather Green
UGB4-C0001



Dim Gray
UAS2-C0000



61 Gray
UAS4-C0001



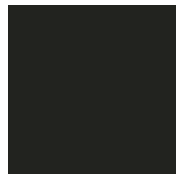
Machine Tool Gray
UAS8-C0009



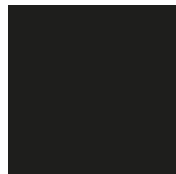
Flat Black
UBS2-C0007



Matte Black
UBS2-C0001



Primer Topcoat
UBS2-C0002



Dull Black
UBS2-C0009



Designer Black
UBS6-C0000



High Gloss Black
UBS8-C0000



Intergalactic
USZ5-C0000

CLEARCOAT

Clear topcoats are typically used as an added layer of protection. Clear topcoats are commonly applied over powders with Aluminum or Mica, and are used to inhibit premature gloss and/or color changes. Testing is recommended to confirm acceptability.

Full Gloss
DCS9-C0001

Semi Gloss (50°-70°)
UCS6-C0001

Low Gloss (30°-50°)
UCS4-C0001

*Products requiring a clearcoat at all times, such as DCS9-C0001 Full Gloss Clear.

READYMATCH® TOUCHUP

Regardless of finish application or color, Sherwin-Williams has your touch-up solution with ReadyMatch. These aerosols are in-stock and can be color-customized, making touch-up easier and more efficient. For more information on the benefits of ReadyMatch and other solutions from Sherwin-Williams, please contact your local representative.

¹ Epoxy Powder Primer/Interior Use Only. NOT intended for use under Chemical Agent Resistant Finish Coatings (CARC)

² Epoxy Powder Primer for use with Chemical Agent Resistant Finish Coatings (CARC)

³ For use as a camouflage, Chemical Agent Resistant Finish Coating (CARC)

⁴ Coating conforms to MIL-PRF-32550, Type 3 Form A

PLEASE NOTE: Exterior applications are not recommended for Epoxy or Hybrid products.

OEM specified and approved finishes are available. Please contact your Sherwin-Williams Representative for details.

Due to the printing process, colors shown approximate as closely as possible to the actual paint colors. Colors are provided by the Sherwin Williams Company.

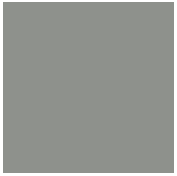
HYBRID



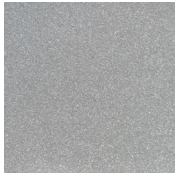
With the largest North American distribution platform in the industry and an ever-expanding global presence, Sherwin-Williams can provide products when and where you need them. Our Powdura Powder Coatings come in a virtually limitless array of colors and textures, making it easy to get the exact look and feel your customers want. Combine that with our excellent onsite technical support to achieve your total finishing solution with Sherwin-Williams.



HYBRID METALLIC



Display Silver Bonded
HCF8-C0008



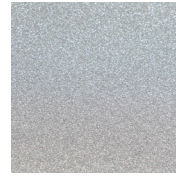
Silver Bonded Metallic
HAF2-C0005



Nickel Metallic Texture
HAF2-C0001



Champagne Metallic
Bonded
HHF2-C0004



Bright Silver NSF 51
HCF8-70048



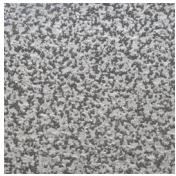
Gunmetal
HHF2-C0003



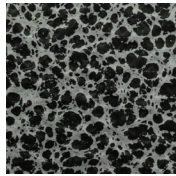
Electrum Gold
HHZ4-C0000



UFO Gray
HAZ2-C0000



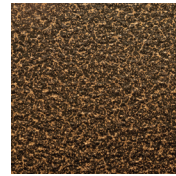
Moon Landing
HSV3-C0000



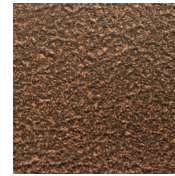
Supreme Silver Vein
Bonded
HBF8-C0001



Titan Gold
HDM7-C0000



Gatsby Gold
HDM2-C0000



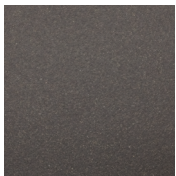
Copper Medallion
HBM2-C0000



Earthwood Bronze
HDZ2-C0000



Espresso Metallic
HNZ2-C0000



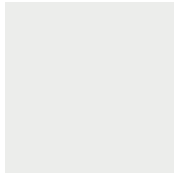
Bronze Age
HDM1-C0000



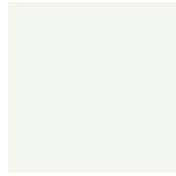
POLYESTER TGIC & TGIC-FREE



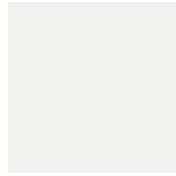
High Reflectance White II
PWT1-C0001



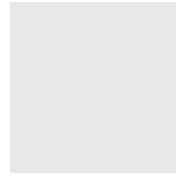
Wheel White
PWS8-C0027



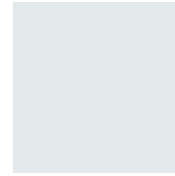
High Reflectance White
PWS8-C0029



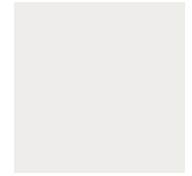
Pure White
PWS8-C7479



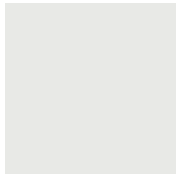
Rocket White
PWS8-C0025



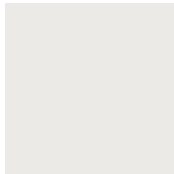
Arctic
FWS8-C0000 (TGIC FREE)



Whitewater
PWS8-C0026



Gloss White
PWS8-C0016



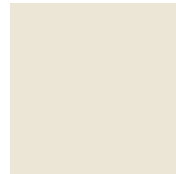
White Powder
PWS8-C0002



Wool White
FWT2-C0000 (TGIC FREE)



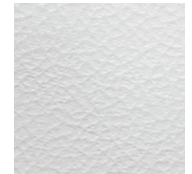
Alabaster
PWT4-C0000



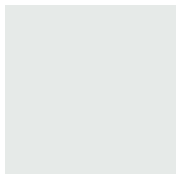
White Texture
PWT6-C0002



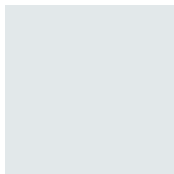
White Wrinkles
PWT2-C0000



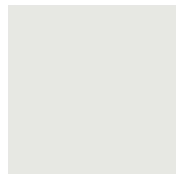
Crumpled Paper
PWT4-C0001



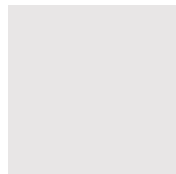
Tech White
PWS8-C0013



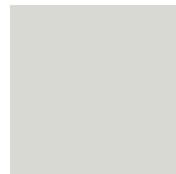
Starburst White
PWS8-C0028



Coastal White
PWS6-C0018



Whispy White
PWS4-C0002



Bone White
PWS4-C0001



Almond
PHS4-C0030



Smooth Beige
PHS9-C0000



Almond
PHS4-C0026



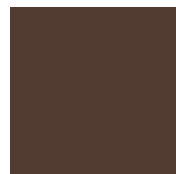
Surrey Beige
PHS4-C0028



Western Tan
PHS6-C0021



Canyon Rock
PRB1-C0001



Royal Brown
PNS4-C0001



Sandstone
PHS4-C0027



Clay
PHS4-C0029



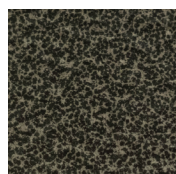
Champagne
FHS8-C0000 (TGIC FREE)



Medium Bronze
PNS4-C0002



Architectural Bronze
PDS4-C0014



Bronze Age II
PDV8-C0001



Safety Yellow
PYS8-C0007



NL Yellow
PYS4-C8289



Golden Corn
PYS9-C0000



Equipment Yellow
PYS8-C0008



Safety Orange
PES8-C6148



Gloss Orange
PES8-C6849



Bittersweet
PES8-C0004



Ultra Orange
PES8-C0006



Red Letter
PRS8-C0063



Regal Red
PRS8-C0008



International Red
PRS8-C0015



Brite Red
PRS8-C0120



Raw Aventurine
PGS8-C0017



Vista Green
PGS6-C0016



Enviro Green
PGS8-C0652



Campus Green
PGS8-C0016



Fence Green
PGS8-C0651



Forest Green
PGS4-C0001



Capitol Blue
PLS8-C0019



Safety Blue
PLS8-C0021



Equipment Blue
PLS8-C0020



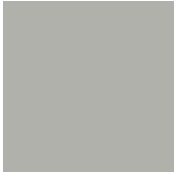
Blue Ribbon
PLS8-C0002



Postal Blue
PLS8-C0004



Mystical
FAS7-C0000 (TGIC FREE)



Glossy Gray
PAS8-C0022



Light Gray
PAS4-C0002



Frame Gray
PAS4-C0045



Gray Shell
PAS9-C0000



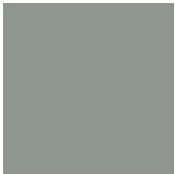
ANSI 70 Gray
PAS8-C0003



Wheel Gray
PAS8-C0016



New Rim Gray
PAS8-C0020



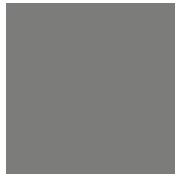
61 Gray
PAS4-C2395



61 Grout Gray
PAT1-C0001



Wet Concrete
PAT4-C0001



Titan
FAS8-C0000 (TGIC FREE)



49 Gray
PAS6-C0001



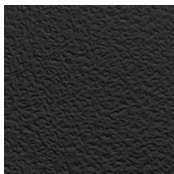
Raptor
PAT4-C0000



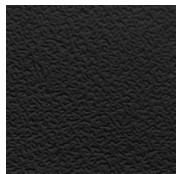
Charcoal
PAS4-C0001



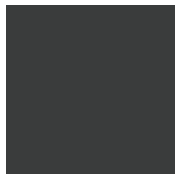
Slippery Slope
PAT8-C0000



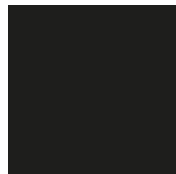
Raven Texture I
PBT2-C0001



Raven Texture II
PBT6-C0001



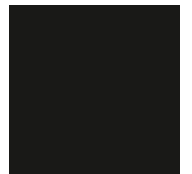
Midnight Black Wrinkle
FBT2-C0002 (TGIC FREE)



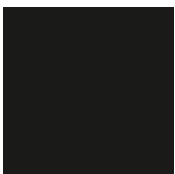
Black
PBS4-C0009



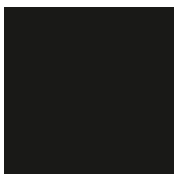
Low Gloss Black
PBS4-C0010



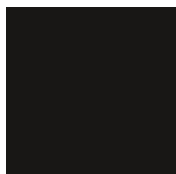
Satin Black
FBS4-C2634 (TGIC FREE)



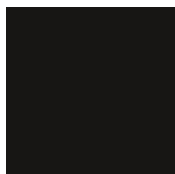
Semi-Gloss Black
FBS6-C2476 (TGIC FREE)



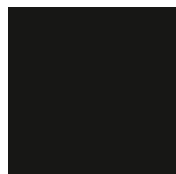
Jet Black
FBS4-C0001 (TGIC FREE)



Gloss Black
PBS8-C0000



Wheel Black
PBS8-C0001



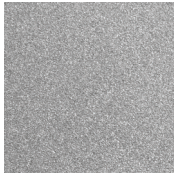
Mirror Black
PBS8-C2819



POLYESTER TGIC METALLIC



Sport Silver Bonded
PAF8-C0007**



Silver Metallic
PAM8-C0000**



Silver Mist
PSZ4-C0001



Quicksilver
PSZ7-C0001



Silver Fox
PSZ7-C0000



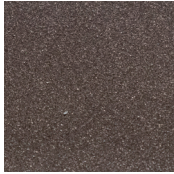
Quantum Silver
PSZ2-C0000



Champagne Bubbles
PSZ5-C0000



Blush Pearl
PSZ4-C0000



Rose Bronze
PDZ5-C0000



Penny Vein
PBM8-C0001

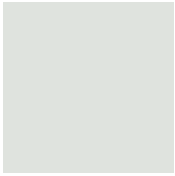


Oil Rubbed Bronze
PDM1-C0001

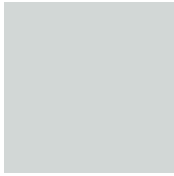


**For exterior applications, we recommend a clear topcoat.

SUPER DURABLE TGIC & TGIC-FREE



Plaster of Paris
DWS9-C0000



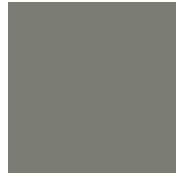
Winter White
DWS9-C0001



Pebble Beach
DAS6-C0000



ANSI 70 Gray
DAS6-C0002



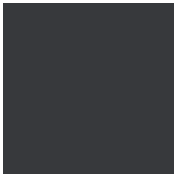
Recreational Gray
DAS5-C0001



Cryptic
DAS6-C0001



Gunmetal Gray
DAS8-C0000



Castle Rock
DAS8-C0001



SD TGIC-Free Equipment
Blue
RLS8-C0001 (TGIC FREE)



SD TGIC-Free Equipment
Yellow
RYS8-C0001 (TGIC FREE)



Yield
DYS8-C0002



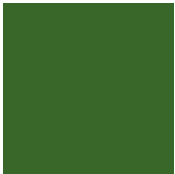
SD Equipment Yellow
DYS8-C0001



Valentine
DRS8-C0002



SD Equipment Red
DRS8-C0001



SD Tractor Green
DGS9-C0000



Smooth Green
DGS7-C0000



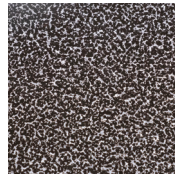
Silverton
DAZ4-C0000



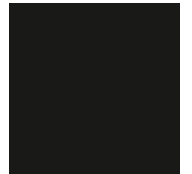
Anthracite
DBR2-C0000



Cassiterite
DSZ1-C0000



Metamorphic Rock
DAZ6-C0001



Medium Gloss Black
DBS6-C0026



Black Widow
DBB3-C0000



Pompeian Gold
DDM1-C0000



Mineral Bronze
DDZ4-C0000

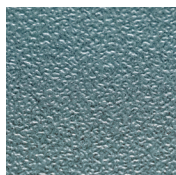
SPICE / BLEND



Sequoia Sand
PHB2-C0000



Snakeskin
PHB8-C0005



Verdigris
UGB2-C0000



Green Marble
UGB8-C0000



Granite
UAB4-C0004

OBSESSED WITH YOUR LEGACY

Your designs are your legacy — protect them with powder coatings from Sherwin-Williams, a company with more than 150 years of success. Build your legacy by contacting your local Sherwin-Williams Representative today.

At Sherwin-Williams, we think about industrial finishing differently, continuously seeking the perfect solution to help your products win over your customers. Whether you need the most rugged and protective coating, a technical expert to provide answers and hands-on support, consistently perfect color in just the right gloss, or a custom solution created just for you — we are here to help. We are Sherwin-Williams General Industrial Coatings, and we are obsessed with giving you the competitive edge.

oem.sherwin-williams.com or call (855) 806-6846