

Powdura OneCure™

Single Cure Primer and Topcoat Powder System



In tough environments, you need a durable coating that sustains its appearance through weathering and avoids corrosion.

Your solution is here.

Powdura OneCure™ meets your business needs by providing a primer and topcoat in a single cure system.



Premium Single Cure System

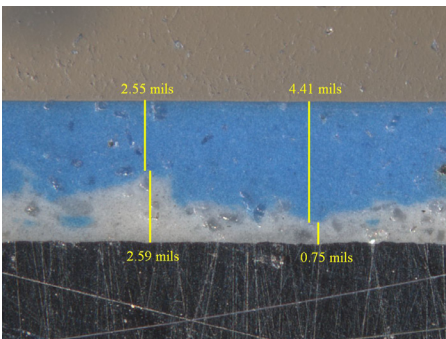
- Dry-on-dry application allows for primer and topcoat to develop a stronger bond when baked together
- Exceptional edge coverage leads to greater corrosion and chemical resistance
- Cross-link technology creates excellent chip resistance
- Epoxy and durable UV finish for protection against weathering
- Available in topcoats with the highest quality color and gloss retention



Better Cured Together

Traditionally, powder topcoats are applied over already cured or gelled primers, potentially resulting in poor inter-coat adhesion.

Powdura OneCure cross-links primer and topcoat chemically to create a high quality coating system.



For a better finish, Ask Sherwin-Williams.™

Powdura OneCure™ Colors



DBS9-00K12
Pebble Black



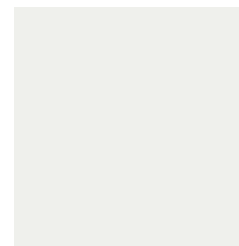
DBS5-00K12
Black Ink



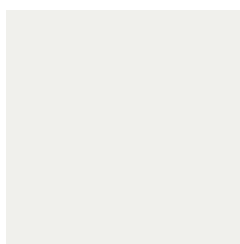
DBS2-00K05
Electronic Black



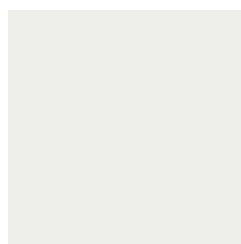
DBT2-00K10
Black Sand



DWS8-00K20
Traffic White HG
RAL 9016, 80 Gloss



DWS5-00K10
Traffic White MG
RAL 9016, 50 Gloss



DWS3-00K10
Traffic White LG
RAL 9016, 30 Gloss



DYS9-00K15
Equipment Yellow



DYS8-00K30
Melon Yellow
RAL 1028



DYS8-00K35
Safety Yellow



DAS6-00K49
ANSI 49 Gray



DAF8-00K05
Metallic Charcoal



DAS8-00K70
ANSI 70 Gray



DAS4-00K61
ANSI 61 Gray



DLS8-00K15
Blue Ribbon



DRS9-00K40
Bright Red



DGS8-00K35
Ocala Green



DGS4-00K10
Forest Green



DES9-00K15
Bittersweet Orange



DNS4-00K10
Architectural Bronze

Powdura OneCure™ is also available in custom colors. Ask your sales representative about color matching options.

These products are to be used as a system with EAS6-00K33 Epoxy Primer or EAS6-00K44 Zinc Epoxy Primer

Since 1866, Sherwin-Williams has provided manufacturers and finishers with the coatings they need to make their products look better and last longer, while helping their operations meet productivity and sustainability goals. For our general industrial markets, our innovative solutions go beyond coatings to include knowledge, tools, equipment, supplies, and industry-leading support. For a better finish, ask Sherwin-Williams.

Call 1-855-397-8557 or visit us at oem.sherwin-williams.com/powdura

© 2016 The Sherwin-Williams Company
Archway# 1100143
GI-0143-CC DO 8/17