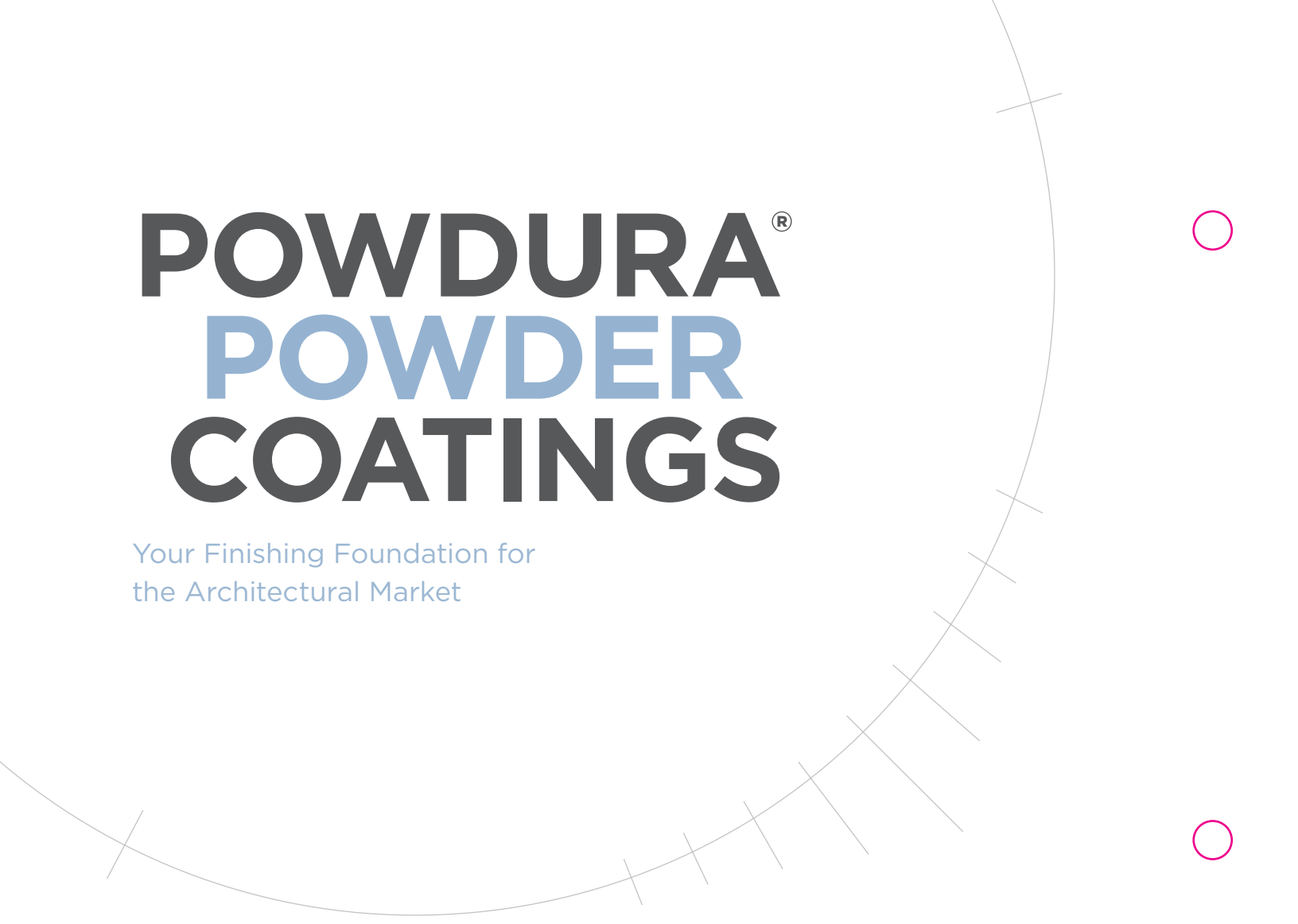


POWDURA[®] POWDER COATINGS

for Architectural Exterior
Building Products



SHERWIN-WILLIAMS[®]

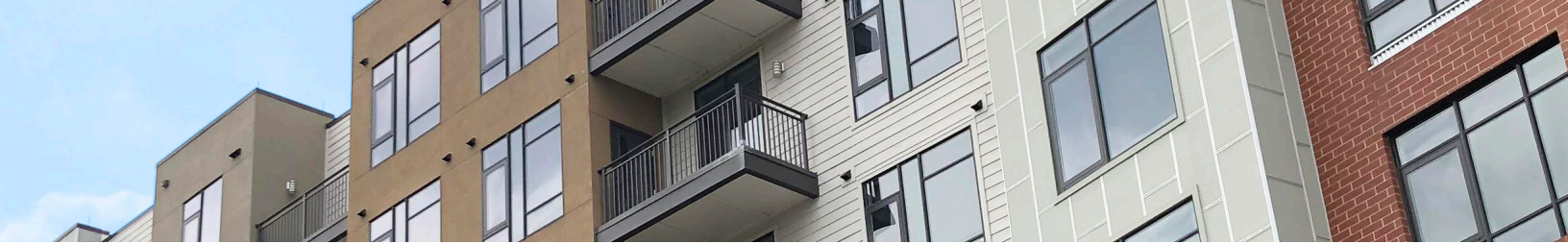


POWDURA[®] POWDER COATINGS

Your Finishing Foundation for
the Architectural Market

The portfolio of Powdura[®] powder coatings for the aluminum and steel architectural markets provides architects with the desired look for their buildings, and the confidence that these finishes can withstand the test of time. Ideal for both interior and exterior applications, Powdura solutions include a striking range of colors and effects, to make your building stand out amongst city skylines and evolving landscapes. As an expert in the building products market for over 50 years, Sherwin-Williams supplies product excellence, field support, and expertise – giving customers a competitive edge.

Powdura coatings supply the durability to enhance the life of your buildings – backed by product testing and designed to meet AAMA specifications. Stay one step ahead with access to improved color creation – based on market trends and design preferences – to transform your completed building into a unique architectural creation. Driven by our passion for your success, Sherwin-Williams is committed to offering a full line of products, technical service, and speed to market – ensuring long-lasting performance for your monumental structures.



ARCHITECTURAL COATINGS PROGRAM

As demand for environmentally sustainable construction grows, Sherwin-Williams continues to support the industry by delivering products that meet or exceed the criteria for green building credits with Leadership in Energy and Environmental Design (LEED). Powdura® powder coating systems for exterior and interior metal building products offer the breadth and flexibility you need for your finishing requirements – meeting even the most stringent VOC regulations. These finishes possess excellent abrasion, mar, scratch, and impact resistance to withstand the harshest environments

Powdura® 3000, 4000, and 5000 are designed to meet their respective American Architectural Manufacturers Association (AAMA) specifications for Organic Coatings on Aluminum. We also offer a full portfolio of liquid products designed to meet AAMA specifications to complement our powder offering. We can provide architects with the look they want, regardless of technology utilized for an for application.

ARCHITECTURAL POWDER	PRODUCT AVAILABILITY	COLOR RANGE	GLOSS RANGE	SPECIFICATION
Powdura® 3000 RAL SD Polyester TGIC-free	In Stock	RAL Space	85+	2603
Powdura® 3000 Satin SD Polyester TGIC-free	In Stock	RAL Space	30-40	2603
Powdura® 4000 SD Polyester	In Stock	Custom Match Pastel/Earthtone	35-80	2604
Powdura® 4000 Anodite Ultra Matte SD-TGIC-free	In Stock	Custom and Stock Colors in Opaque and Mica	5-15	2604
Powdura® 5000	25 Color Formulas Available	Custom Match Pastel/Earthtone	30-80	2605





POWDURA® PRODUCT SELECTOR

	POWDURA® 3000	POWDURA® 4000	POWDURA® 4000 ANODITE SERIES	POWDURA® 5000
AAMA Spec	2603	2604	2604	2605
Film Thickness ASTM D7091	1.8 - 3.0 mil	2.0 - 3.0 mil	2.0 - 3.0 mil	1.8 - 3.0 mil
Specular Gloss at 60° ASTM D523	30 - 90 units	30 - 90 units	5 - 15 Opaque 15-30 Mica Finishes	30 - 80 units
Humidity ASTM D2247	1,500 Hours Aluminum	3,000 Hours Aluminum	3000 Hours Aluminum	4,000 Hours Aluminum
Acid Salt Spray ASTM G85 Annex 5	N/A	N/A	N/A	2,000 Hours Aluminum
Salt Spray ASTM B117	2,000 Hours	3,000 Hours	3,000 Hours	4,000 Hours
Weathering	1 Year Exposure, 45° South Florida	5 Years Exposure, 45° South Florida	5 Years Exposure, 45° South Florida	10 Years Exposure, 45° South Florida
Fade ASTM D2244	Slight Color Fade	Max 5ΔE	Max 5ΔE	Max 5ΔE
Chalk ASTM D4214	Chalk Minimal	Chalk Max. 8 Rating	Chalk Max. 8 Rating	Chalk Max. 8 Rating on Colors; Max. 6 Rating on Whites
Gloss ASTM D523	Slight Gloss Loss	Gloss > 30% Retention	Gloss > 30% Retention	Gloss > 50% Retention

POWDURA® 3000

Powdura® 3000 coatings, formulated with super durable polyester resins, feature a wide range of color and gloss levels, including 188 RAL standard colors – available in both TGIC and TGIC-free formulations. Designed to meet or exceed AAMA 2603 specifications, these coatings are ideal for a number of applications, which include: residential and light commercial use for windows, doors, residential fencing, and railings.

POWDURA® 4000

Powdura® 4000 coatings are developed using super durable polyester resins and solar-reflective pigments known to reduce heat build-up and leave the painted metal cooler to the touch than coatings with standard pigments. Designed to provide substantial resistance to abrasion, impacts, scuffing, and scratching, these solutions deliver a superb finish and long-term durability.

Available in TGIC and TGIC-free formulations, Powdura 4000 is formulated to meet or exceed AAMA 2604 specifications. Powdura 4000 coatings are used in residential and light commercial environments which include: windows, doors, fencing, railings stairwells, louvers, skylights, indoor atrium areas, high traffic areas, and store fronts.

ANODITE SERIES

The Anodite series is a collection of 12 preferred in-stock colors, designed to provide the look of anodized metal surfaces while delivering a smooth, ultra-matte, and finger-print resistant finish. The use of mica pigments mimics anodized finishes without the potential problems of anodizing. This system uses super durable TGIC-free technology for long-term resistance against weathering. The ability to repair, apply to either aluminum or steel substrates, and apply via a single-coat, no clearcoat required method makes the Anodite series the perfect finish for your next project.

POWDURA® 5000

Powdura® 5000 coatings offer the ultimate in exterior finish performance. Using a combination of fluoropolymer resins and solar-reflective pigments, they defend against ultraviolet (UV) radiation, increasing thermal stability and delivering a hard, durable finish to combat the harshest wear and tear. Make a lasting impression with your structure by choosing from rich pastel and earth tone colors – in both opaque and mica finishes.

Developed exclusively using a 100% fluoropolymer resin you can depend on Powdura 5000 to protect your architectural components from the elements. These coatings have proven field performance supported by over 10 years of South Florida Exposure data. Powdura 5000 is designed to meet or exceed AAMA 2605 specification for color and gloss retention. With resistance to chipping, chalking, cracking, and peeling, Powdura 5000 keeps your finish looking new for decades to come. Requiring minimal maintenance, these coatings can be applied to residential and monumental structures and are ideal for: windows, doors, fencing, railings, louvers, skylights, curtain walls, column covers, exterior lighting fixtures, canopy structures, and store fronts.



APPROVED APPLICATOR PROGRAM

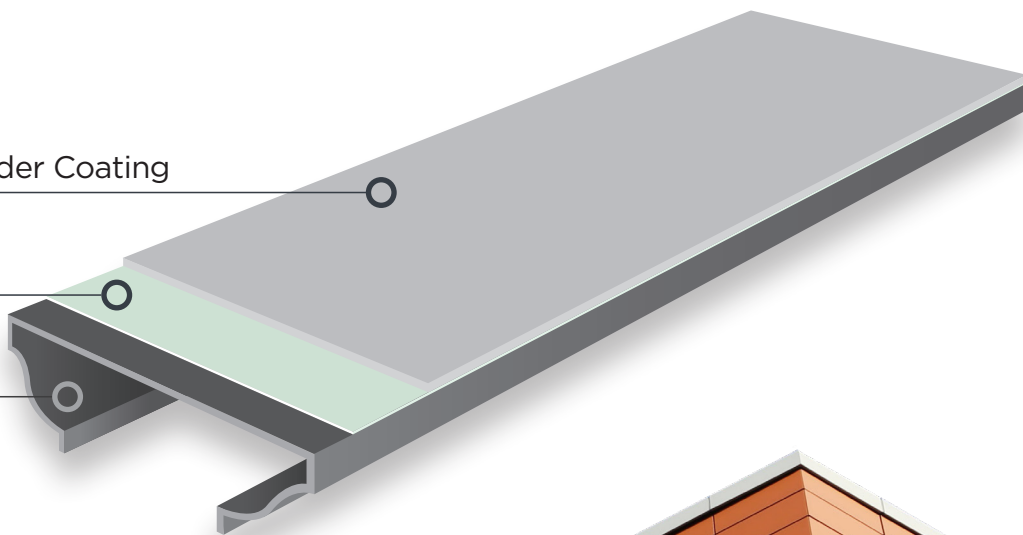
Our established audit and testing program ensures that applicators meet Sherwin-Williams' specifications and those of AAMA when applying Powdura® coatings. Through the Approved Applicator Program's process, our technical service team works directly with applicators, assuring the highest performance and appearance of your finished product.

Powdura® Powder Coating

Pretreatment

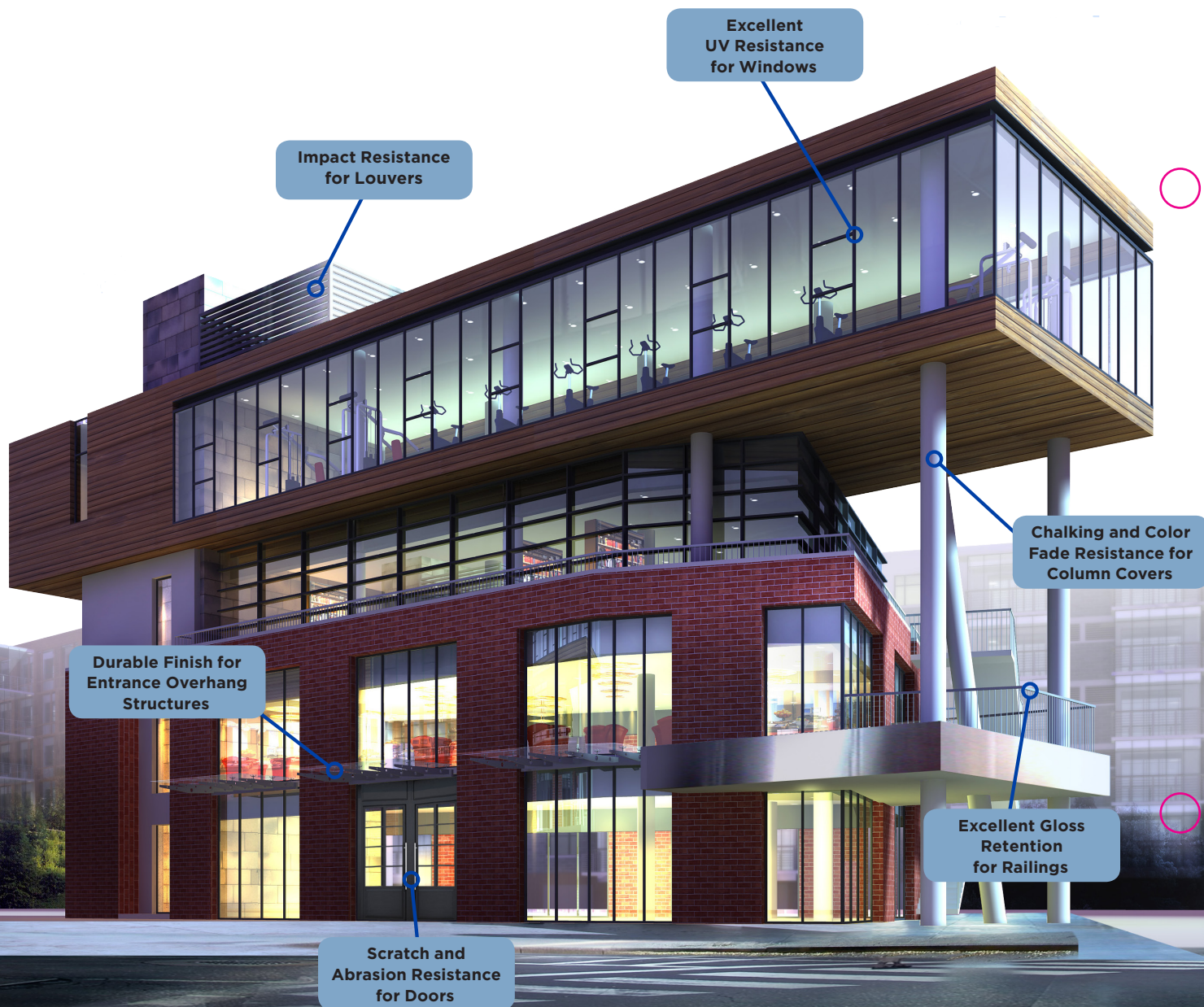


Aluminum



WHEN YOU NEED EXTRA CORROSION RESISTANCE

Powdura® Super Durable Primer (RAS5-80000) resists damage from harmful UV rays and provides an extra barrier to aid in corrosion prevention. When used with Powdura® topcoats and applied over properly pre-treated aluminum, the coating systems are designed to meet or exceed their respective AAMA specifications for residential and commercial applications.



POWDURA® COATINGS FOR STEEL BUILDING PRODUCTS

COATING SYSTEM	STANDARD PERFORMANCE	HIGH PERFORMANCE	SUPERIOR PERFORMANCE	OTHER
Cold Rolled Steel (Substrate)				Hot Dipped Galvanized Steel
Step 1 Pretreatment	Spray Wand Application 2-Stage Iron Phosphate	3-Stage Iron Phosphate	Chrome Pretreatment or Trivalent Chrome Pretreatment	ASTM D7803 Preparing HDG (Hot Dipped Galvanized) for Painting
Step 2 Primer	EAS6-C0000 Epoxy Primer	EAS6-C0025 Zinc Rich Epoxy Primer	EAS6-C0025 Zinc Rich Epoxy Primer	EAS6-C0025 or EAS6-C0000
Step 3 Topcoat	RAL Powdura® 3000 SD	Powdura® 4000	Powdura® 5000	Powdura® 4000 or Powdura® 5000
Hot Rolled Steel (Substrate)				Hot Dipped Galvanized Steel
Step 1 Metal Prep	Blast Class 2	Blast to Class 3	Blast to Class 3	ASTM D7803 Preparing HDG (Hot Dipped Galvanized) for Painting
Step 2 Pretreatment	N/A	3-Stage Iron Phosphate	3-Stage Iron Phosphate or Better	Surface Dependent
Step 3 Primer	EAS6-C0000 Epoxy Primer	EAS6-C0025 Zinc Rich Epoxy Primer	EAS6-C0025 Zinc Rich Epoxy Primer	EAS6-C0025 or EAS6-C0000
Step 4 Topcoat	RAL Powdura® 3000 SD	Powdura® 4000	Powdura® 5000	Powdura® 4000 or Powdura® 5000

There are four (4) levels of abrasive blasting described in **AS1627-Part 4** - Class 1 - **Class 2** - **Class 2 1/2** - **Class 3**. These specifications define the physical cleanliness that must be achieved on the surface. The last three of these specifications requires all the mill scale, rust, and old paints to be removed. All that can remain on the surface are stains of these contaminants. The following amount of stains is allowed (by visual estimation). Class 2 - 33 percent of each sqcm · Class 2 1/2 - 5 percent of each sqcm · Class 3 - none.

PRODUCT SELECTION TOOLS

A full line of Powdura® product selection tools are available for architects and specifiers who want to understand more of the benefits and differences between high-performing liquid and powder coatings. Ask your Sales Representative about following resources available upon request:

- Powdura® 5000 Sales Kit
- Powdura® 4000 Color Guide
- Powdura® 4000 Anodite Collection
- RAL Powdura® 3000 Fan Deck
- Color panels samples of in stock products

COLOR CAPABILITIES

At Sherwin-Williams the color and finish possibilities are endless. Our new DesignHouse located in Minneapolis, Minnesota is a space for designers, architects, applicators, and our color specialists to collaborate, be inspired, and explore the “what if” possibilities of coatings. Learn more about our Color Capabilities and at oem.sherwin.com

GLOBAL REACH, LOCAL IMPACT

As we service finishing markets through our locations in North America, Europe, and Asia, the local support we provide is unparalleled in the industry. Our products, knowledge, and technical expertise can be delivered to virtually any location on the globe. We can complement your product development, specification, and global supply chain processes - providing innovative thinking, engineering expertise, and world class technical support.

HANDS-ON COMMITMENT

Sherwin-Williams has technical and research laboratories, as well as technical and sales representatives in all industrial markets. Our Architectural Sales and Technical Service Representatives work closely with job shops and OEMs to optimize application processes. We also have professionals involved in promoting the architectural market through involvement on education, specification, and promotion committees of AAMA, AEC, and PCI. Contact us for more information on upcoming AIA Continuing Education credit courses on Powder Coatings Technology.

INDUSTRY STANDARDS

Our Powdura® products are designed to meet the needs of your application. Whether you are looking to meet Qualicoat or AAMA for standards, we offer a full line of products to meet your requirements. Ask you local sales representative for more information.



OBSESSED WITH YOUR LEGACY

Your designs are your legacy, protect it with Powder Coatings from a company with more than 150 years of success. Build your legacy — contact your local Sherwin-Williams Representative today

At Sherwin-Williams, we think about industrial finishing differently, continuously seeking the perfect solution to help your products win over your customers. Whether you need the most rugged and protective coating, a technical expert to provide answers and hands-on support, consistently perfect color in just the right gloss, or a custom solution created just for you — we are here to help. We are Sherwin-Williams General Industrial Coatings, and we are obsessed with giving you the competitive edge.

oem.sherwin-williams.com or call (855) 806-6846