

# POWDURA<sup>®</sup> POWDER COATINGS

COATINGS COLOR GUIDE



**SHERWIN-WILLIAMS**

[oem.sherwin-williams.com](http://oem.sherwin-williams.com) or call (855) 806-6846

# POWDURA® POWDER COATINGS

VISUALIZE THE POSSIBILITIES OF POWDER.  
YOUR UNIQUE COATING SOLUTION AWAITS.

Sherwin-Williams Powdura Powder Coatings offer the breadth and flexibility needed for your finishing operation. Powdura coatings offer a wide assortment of in-stock colors and textures, as well as special effect finishes and custom colors available just-in-time. With the benefits of the largest distribution platform in the industry, an expanding global presence, and a commitment to providing value-added services and support, Sherwin-Williams is your total finishing solution.

## WHERE POWDURA POWDER COATINGS ARE USED

- Fencing
- Lawn Equipment
- Outdoor Dining Sets
- Playground Materials
- Steel Fabrication

## TECHNOLOGIES

### EPOXY

Epoxy powder coatings are the technology of choice for high-performance applications, and Powdura Epoxy Coatings will meet or exceed most performance expectations. These coatings combine outstanding salt spray resistance and excellent chemical performance with exceptional film hardness. Our epoxy coatings are often selected for functional or corrosion-inhibiting applications, such as industrial equipment, under-hood automotive, pipe coatings or primers. In addition to outstanding performance, finishers can also benefit from a wide range of cure capabilities.

### HYBRID

When you desire the mechanical film properties of an epoxy, but prefer the overbake stability of a polyester, hybrid technology is an excellent solution. Powdura Hybrid Powder Coatings combine the technologies with exceptional transfer efficiency — giving you the ability to completely cover and protect many hard-to-coat parts. As the proven choice for many finishers, common end uses for Powdura Hybrid Powder Coatings include metal office furniture, store fixtures, electronic cabinetry and racking.

## POLYESTER URETHANE

Polyester urethane technology provides a finish that lasts, and Powdura Polyester Urethane Coatings are no exception. Combining exceptional resistance to weathering and UV light with a unique high-definition finish, Powdura Polyester Urethanes are an excellent choice for finishing lawn and garden equipment, outdoor furniture, electronic enclosures and automotive components.

## TGIC AND TGIC-FREE POLYESTER

Polyester powder coatings are the optimal choice when versatility is critical, and Powdura Polyester Coatings provide coating solutions for a wide range of applications and finishers. Available in TGIC and TGIC-Free formulations, Powdura Polyester Coatings combine excellent color and gloss retention with great overbake stability and high-quality mechanical properties — making them ideal for various applications, including electronic cabinetry, case goods, fencing, metal building products, lighting, furniture and heavy equipment.

## NSF

Powdura NSF-Certified Powder Coatings are specially formulated to meet the performance standards of the National Sanitation Foundation (NSF) International organization.

- NSF 51 products are certified hybrid and epoxy powder coatings that may have incidental contact with food products, and are suitable for applications that include food displays and processing equipment.
- NSF 61 products are certified epoxy powder coatings used as single-coat applications for valves, fittings, pipes and tanks used to distribute potable water.

## UL

We understand that obtaining Underwriters Laboratories (UL) approval can be critical for a wide range of products, and Sherwin-Williams produces a multitude of solutions that have been approved by UL. If you need such a product, contact your local sales representative and they can help you select the optimal coating to meet your requirements.

## RAL

Featuring 188 solid, high-gloss and satin sheen colors in Super Durable TGIC-Free Polyester technology, we deliver the exact color you need and fast turnaround to meet your tight deadlines. Sherwin-Williams liquid coatings can also be custom-ordered in many RAL colors to provide a wide range of coating solutions for a variety of substrates requiring both liquid and powder finishes.

**ADDITIONAL POWDURA PRODUCTS/TECHNOLOGIES INCLUDE SUPER DURABLE POLYESTERS, SUPER DURABLE URETHANES, SPECIAL EFFECTS, SUCH AS SPICE AND METALLICS, MIL-SPEC APPROVALS, AND COATINGS THAT MEET AAMA SPECIFICATIONS 2603, 2604 AND 2605.**

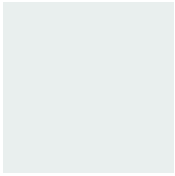
## POWDER COATINGS COVERAGE CHART

(IN SQUARE FEET PER POUND AT 100% EFFICIENCY)									
Specific Gravity*	FILM THICKNESS								
	1.0 mils	1.5 mils	2.0 mils	2.5 mils	3.0 mils	3.5 mils	4.0 mils	4.5 mils	5.0 mils
1.00	192.3	128.2	96.2	76.9	64.1	54.9	48.1	42.7	38.5
1.05	183.1	122.1	91.6	73.3	62.0	52.3	45.8	40.7	36.6
1.10	174.8	116.5	87.4	69.9	58.3	49.9	43.7	38.8	35.0
1.15	167.2	111.5	83.6	66.9	55.7	47.8	41.8	37.2	33.4
1.20	160.3	106.8	80.1	64.1	53.4	45.8	40.1	35.6	32.1
1.25	153.8	102.6	76.9	61.5	51.3	44.0	38.5	34.2	30.8
1.30	147.9	98.6	74.0	59.2	49.3	42.3	37.0	32.9	29.6
1.35	142.4	95.0	71.2	57.0	47.5	40.7	35.6	31.7	28.5
1.40	137.4	91.6	68.7	54.9	45.8	39.2	34.3	30.5	27.5
1.45	132.6	88.4	66.3	53.0	44.2	37.9	33.2	29.5	26.5
1.50	128.2	85.5	64.1	51.3	42.7	36.6	32.1	28.5	25.6
1.55	124.1	82.7	62.0	46.9	41.4	35.4	31.0	27.6	24.8
1.60	120.2	80.1	60.1	48.1	40.1	34.3	30.0	26.7	24.0
1.65	116.5	77.7	58.3	46.6	38.8	33.3	29.1	25.9	23.3
1.70	113.1	75.4	56.6	45.2	37.7	34.3	28.3	25.1	22.6
1.75	109.9	73.3	54.9	44.0	36.6	31.4	27.5	24.4	22.0
1.80	106.8	71.2	53.4	42.7	35.6	30.5	26.7	23.7	21.4
1.85	103.9	69.3	52.0	41.6	34.6	29.7	26.0	23.1	20.8
1.90	101.2	67.5	50.6	40.5	33.7	28.9	25.3	22.5	20.2
1.95	98.6	65.7	49.3	39.4	32.9	28.2	24.7	21.9	19.7
2.00	96.2	64.1	48.1	38.5	32.1	27.5	24.0	21.4	19.2
2.10	91.6	61.0	45.8	36.6	30.5	26.2	22.9	20.3	18.3
2.20	87.4	58.3	43.7	35.0	29.1	25.0	21.9	19.4	17.5
2.30	83.6	55.7	41.8	33.4	27.9	23.9	20.9	18.6	16.7
2.40	80.1	53.4	40.1	32.1	26.7	22.9	20.0	17.8	16.0
2.50	76.9	51.3	38.5	30.8	25.6	22.0	19.2	17.1	15.4
2.60	74.0	49.3	37.0	29.6	24.7	21.1	18.5	16.4	14.8
2.70	71.2	47.5	35.6	28.5	23.7	20.3	17.8	15.8	14.2

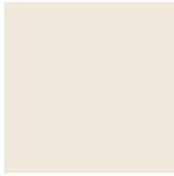
\*Specific Gravity: Ratio of the weight of a given volume of liquid or solid to the weight of an equal volume of water. (ASTM D3451)



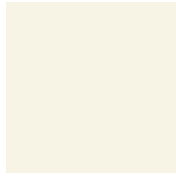
## EPOXY



Polished Porcelain  
EWS8-C0000



Off White - NSF 61  
EWS8-70015



White Chocolate  
EWS2-C0000



Safety Blue  
ELS8-C0002



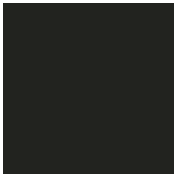
Hero Gray  
EAT1-C0001



Ebony  
EBS2-C0002



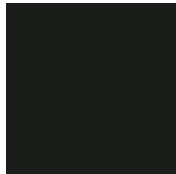
Satin Black  
EBS2-C2782



Iron Gate  
EBS2-C0000

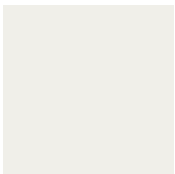


Coal  
EBS8-C0000



Carbide Black  
EBT2-C0000

## SPECIALTIES



White  
EWS8-90004  
(MIL-PRF-32348,  
TYPE 2, CLASS 1)<sup>1</sup>



CARC Tan  
UHS1-80000  
(MIL-PRF-32348,  
TYPE 3, CLASS 1)<sup>3</sup>



CARC Green  
UGS1-80000  
(MIL-PRF-32348,  
TYPE 3, CLASS 1)<sup>3</sup>



CARC Black  
UBS1-80004  
(MIL-PRF-32348,  
TYPE 3, CLASS 1)<sup>3</sup>



Sea Foam Green  
EGS2-90007  
(MIL-PRF-32348,  
TYPE 2, CLASS 1)<sup>1</sup>



Beach Sand  
EHS6-30003  
(MIL-PRF-24712B)



Pewter  
EBF8-C0002

## PRIMER



Off White  
EHS2-20012  
(MIL-PRF-32348, TYPE  
1, CLASS 1)<sup>2</sup>



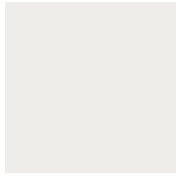
Gray Primer  
EAS6-C0000



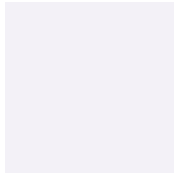
Zinc Rich Primer  
EAS6-C0025 <sup>4</sup>



## URETHANE



Sky White  
UWS8-C0017



Furniture White  
UWS8-C0002



Unicream  
UHS8-C0000



Chrome Classic -  
Bonded Metallic  
UCF8-C0002\*



Chromal Bonded  
Metallic  
UCF8-C0001\*



Racing Red  
URS8-C0000



Super Hero Red  
(Super Durable Urethane)  
KRS9-C0000



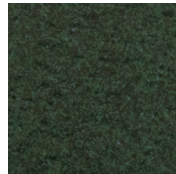
Regal Yellow  
UYS8-C0010



Electric Blue  
ULS8-C0003



Tractor Green  
UGS8-C0001



Weather Green  
UGB4-C0001



Dim Gray  
UAS2-C0000



61 Gray  
UAS4-C0001



Machine Tool Gray  
UAS8-C0009



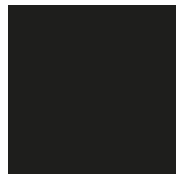
Flat Black  
UBS2-C0007



Matte Black  
UBS2-C0001



Primer Topcoat  
UBS2-C0002



Dull Black  
UBS2-C0009



Designer Black  
UBS6-C0000



High Gloss Black  
UBS8-C0000



Intergalactic  
USZ5-C0000

## CLEARCOAT

Clear topcoats are typically used as an added layer of protection. Clear topcoats are commonly applied over powders with Aluminum or Mica, and are used to inhibit premature gloss and/or color changes. Testing is recommended to confirm acceptability.

Full Gloss  
DCS9-C0001

Semi Gloss (50°-70°)  
UCS6-C0001

Low Gloss (30°-50°)  
UCS4-C0001

\*Products requiring a clearcoat at all times, such as DCS9-C0001 Full Gloss Clear.

## READYMATCH® TOUCHUP

Regardless of finish application or color, Sherwin-Williams has your touch-up solution with ReadyMatch. These aerosols are in-stock and can be color-customized, making touch-up easier and more efficient. For more information on the benefits of ReadyMatch and other solutions from Sherwin-Williams, please contact your local representative.

<sup>1</sup> Epoxy Powder Primer/Interior Use Only. NOT intended for use under Chemical Agent Resistant Finish Coatings (CARC)

<sup>2</sup> Epoxy Powder Primer for use with Chemical Agent Resistant Finish Coatings (CARC)

<sup>3</sup> For use as a camouflage, Chemical Agent Resistant Finish Coating (CARC)

<sup>4</sup> Coating conforms to MIL-PRF-32550, Type 3 Form A

**PLEASE NOTE:** Exterior applications are not recommended for Epoxy or Hybrid products.

OEM specified and approved finishes are available. Please contact your Sherwin-Williams Representative for details.

Due to the printing process, colors shown approximate as closely as possible to the actual paint colors. Colors are provided by the Sherwin Williams Company.

# HYBRID

						
Strobe White HWS8-C0045	Rosin Powder HWT1-C0000	Laundry White HWS8-C0002	NSF 51 White HWS8-50003	Appliance White HWS9-C1534	Blizzard HWT8-C0000	Warm White HHS4-C0038
						
Antique White HWS6-C7786	Muslin HWS4-C0004	Parchment HHS6-C0002	Sand Texture HHT2-C0001	Foggy Day HAT2-C0001	Oyster Shell HAT3-C0000	Cloud HAS4-C0001
						
Smoke Screen HAT4-C0000	Shelf Gray HAS4-C0006	Smooth Gray HAS8-C2858	Macey Gray HAT4-C0001	Battleship Gray HAS6-C0000	Rocky River ANSI 49 HAR3-C0000	Safety Yellow HYS6-C0001
						
Rhythmic Red HRS6-C0000	Rainforest HGS6-C0000	Nitro Blue Texture HLT2-C0006	Flint HAS4-C0002	Charcoal Gray Texture HAT2-C0111	Blackjack HBT2-C0008	Low Gloss Texture Black HBT2-C2621
						
Phantom Black HBT4-C0002	Satin Black HBS2-C2932	Semi-Gloss Black HBS4-C2132	Box Black HBS4-C0003	Gloss Black HBS8-C2299		

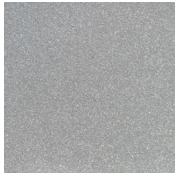
With the largest North American distribution platform in the industry and an ever-expanding global presence, Sherwin-Williams can provide products when and where you need them. Our Powdura Powder Coatings come in a virtually limitless array of colors and textures, making it easy to get the exact look and feel your customers want. Combine that with our excellent onsite technical support to achieve your total finishing solution with Sherwin-Williams.



## HYBRID METALLIC



Display Silver Bonded  
HCF8-C0008



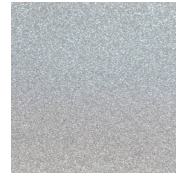
Silver Bonded Metallic  
HAF2-C0005



Nickel Metallic Texture  
HAF2-C0001



Champagne Metallic  
Bonded  
HHF2-C0004



Bright Silver NSF 51  
HCF8-70048



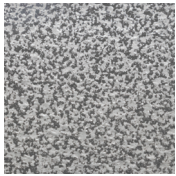
Gunmetal  
HHF2-C0003



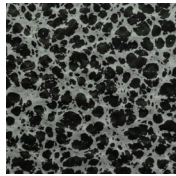
Electrum Gold  
HHZ4-C0000



UFO Gray  
HAZ2-C0000



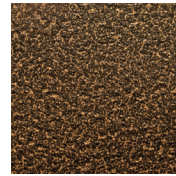
Moon Landing  
HSV3-C0000



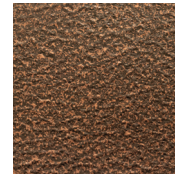
Supreme Silver Vein  
Bonded  
HBF8-C0001



Titan Gold  
HDM7-C0000



Gatsby Gold  
HDM2-C0000



Copper Medallion  
HBM2-C0000



Earthwood Bronze  
HDZ2-C0000



Espresso Metallic  
HNZ2-C0000



Bronze Age  
HDM1-C0000

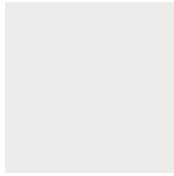




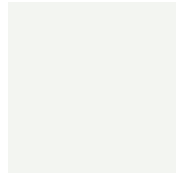
## POLYESTER TGIC & TGIC-FREE



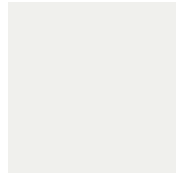
High Reflectance White II  
PWT1-C0001



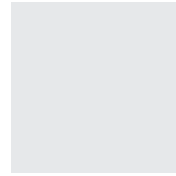
Wheel White  
PWS8-C0027



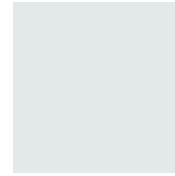
High Reflectance White  
PWS8-C0029



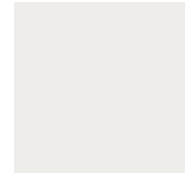
Pure White  
PWS8-C7479



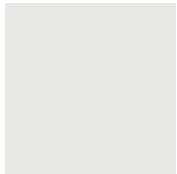
Rocket White  
PWS8-C0025



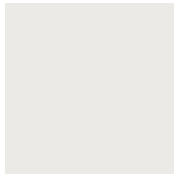
Arctic  
FWS8-C0000 (TGIC FREE)



Whitewater  
PWS8-C0026



Gloss White  
PWS8-C0016



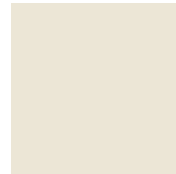
White Powder  
PWS8-C0002



Wool White  
FWT2-C0000 (TGIC FREE)



Alabaster  
PWT4-C0000



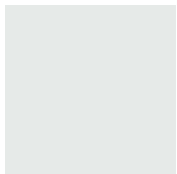
White Texture  
PWT6-C0002



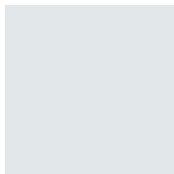
White Wrinkles  
PWT2-C0000



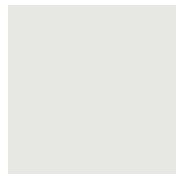
Crumpled Paper  
PWT4-C0001



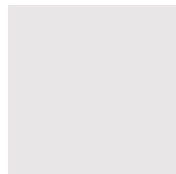
Tech White  
PWS8-C0013



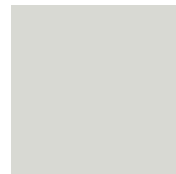
Starburst White  
PWS8-C0028



Coastal White  
PWS6-C0018



Whispy White  
PWS4-C0002



Bone White  
PWS4-C0001



Almond  
PHS4-C0030



Smooth Beige  
PHS9-C0000



Almond  
PHS4-C0026



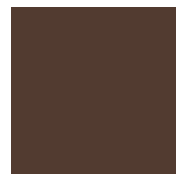
Surrey Beige  
PHS4-C0028



Western Tan  
PHS6-C0021



Canyon Rock  
PRB1-C0001



Royal Brown  
PNS4-C0001



Sandstone  
PHS4-C0027



Clay  
PHS4-C0029



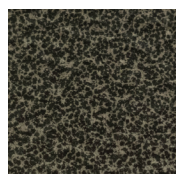
Champagne  
FHS8-C0000 (TGIC FREE)



Medium Bronze  
PNS4-C0002



Architectural Bronze  
PDS4-C0014



Bronze Age II  
PDV8-C0001



Safety Yellow  
PYS8-C0007



NL Yellow  
PYS4-C8289



Golden Corn  
PYS9-C0000



Equipment Yellow  
PYS8-C0008



Safety Orange  
PES8-C6148



Gloss Orange  
PES8-C6849



Bittersweet  
PES8-C0004



Ultra Orange  
PES8-C0006



Red Letter  
PRS8-C0063



Regal Red  
PRS8-C0008



International Red  
PRS8-C0015



Brite Red  
PRS8-C0120



Raw Aventurine  
PGS8-C0017



Vista Green  
PGS6-C0016



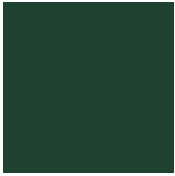
Enviro Green  
PGS8-C0652



Campus Green  
PGS8-C0016



Fence Green  
PGS8-C0651



Forest Green  
PGS4-C0001



Capitol Blue  
PLS8-C0019



Safety Blue  
PLS8-C0021



Equipment Blue  
PLS8-C0020



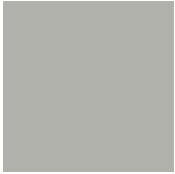
Blue Ribbon  
PLS8-C0002



Postal Blue  
PLS8-C0004



Mystical  
FAS7-C0000 (TGIC FREE)



Glossy Gray  
PAS8-C0022



Light Gray  
PAS4-C0002



Frame Gray  
PAS4-C0045



Gray Shell  
PAS9-C0000



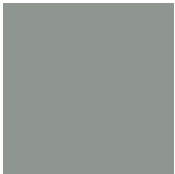
ANSI 70 Gray  
PAS8-C0003



Wheel Gray  
PAS8-C0016



New Rim Gray  
PAS8-C0020



61 Gray  
PAS4-C2395



61 Grout Gray  
PAT1-C0001



Wet Concrete  
PAT4-C0001



Titan  
FAS8-C0000 (TGIC FREE)



49 Gray  
PAS6-C0001



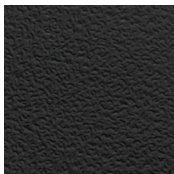
Raptor  
PAT4-C0000



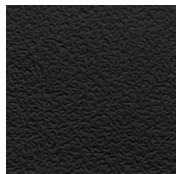
Charcoal  
PAS4-C0001



Slippery Slope  
PAT8-C0000



Raven Texture I  
PBT2-C0001



Raven Texture II  
PBT6-C0001



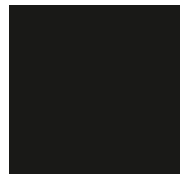
Midnight Black Wrinkle  
FBT2-C0002 (TGIC FREE)



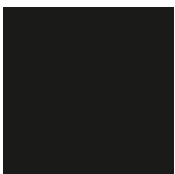
Black  
PBS4-C0009



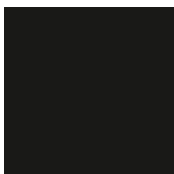
Low Gloss Black  
PBS4-C0010



Satin Black  
FBS4-C2634 (TGIC FREE)



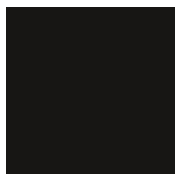
Semi-Gloss Black  
FBS6-C2476 (TGIC FREE)



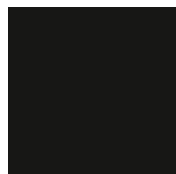
Jet Black  
FBS4-C0001 (TGIC FREE)



Gloss Black  
PBS8-C0000



Wheel Black  
PBS8-C0001



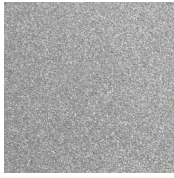
Mirror Black  
PBS8-C2819



## POLYESTER TGIC METALLIC



Sport Silver Bonded  
PAF8-C0007\*\*



Silver Metallic  
PAM8-C0000\*\*



Silver Mist  
PSZ4-C0001



Quicksilver  
PSZ7-C0001



Silver Fox  
PSZ7-C0000



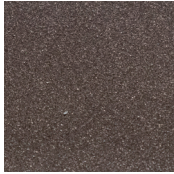
Quantum Silver  
PSZ2-C0000



Champagne Bubbles  
PSZ5-C0000



Blush Pearl  
PSZ4-C0000



Rose Bronze  
PDZ5-C0000



Penny Vein  
PBM8-C0001



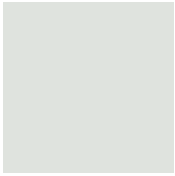
Oil Rubbed Bronze  
PDM1-C0001



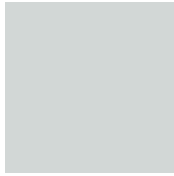
\*\*For exterior applications, we recommend a clear topcoat.



## SUPER DURABLE TGIC & TGIC-FREE



Plaster of Paris  
DWS9-C0000



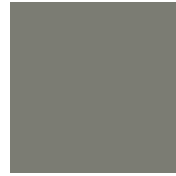
Winter White  
DWS9-C0001



Pebble Beach  
DAS6-C0000



ANSI 70 Gray  
DAS6-C0002



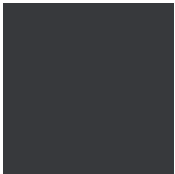
Recreational Gray  
DAS5-C0001



Cryptic  
DAS6-C0001



Gunmetal Gray  
DAS8-C0000



Castle Rock  
DAS8-C0001



SD TGIC-Free Equipment  
Blue  
RLS8-C0001 (TGIC FREE)



SD TGIC-Free Equipment  
Yellow  
RYS8-C0001 (TGIC FREE)



Yield  
DYS8-C0002



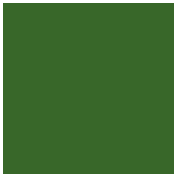
SD Equipment Yellow  
DYS8-C0001



Valentine  
DRS8-C0002



SD Equipment Red  
DRS8-C0001



SD Tractor Green  
DGS9-C0000



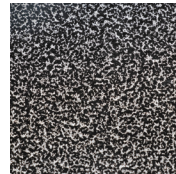
Smooth Green  
DGS7-C0000



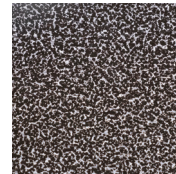
Silverton  
DAZ4-C0000



Anthracite  
DBR2-C0000



Cassiterite  
DSZ1-C0000



Metamorphic Rock  
DAZ6-C0001



Medium Gloss Black  
DBS6-C0026



Black Widow  
DBB3-C0000



Pompeian Gold  
DDM1-C0000



Mineral Bronze  
DDZ4-C0000

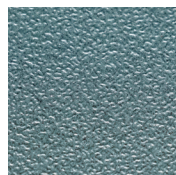
## SPICE / BLEND



Sequoia Sand  
PHB2-C0000



Snakeskin  
PHB8-C0005



Verdigris  
UGB2-C0000



Green Marble  
UGB8-C0000



Granite  
UAB4-C0004

# OBSESSED WITH YOUR LEGACY

Your designs are your legacy — protect them with powder coatings from Sherwin-Williams, a company with more than 150 years of success. Build your legacy by contacting your local Sherwin-Williams Representative today.

---

At Sherwin-Williams, we think about industrial finishing differently, continuously seeking the perfect solution to help your products win over your customers. Whether you need the most rugged and protective coating, a technical expert to provide answers and hands-on support, consistently perfect color in just the right gloss, or a custom solution created just for you — we are here to help. We are Sherwin-Williams General Industrial Coatings, and we are obsessed with giving you the competitive edge.

**[oem.sherwin-williams.com](http://oem.sherwin-williams.com) or call (855) 806-6846**