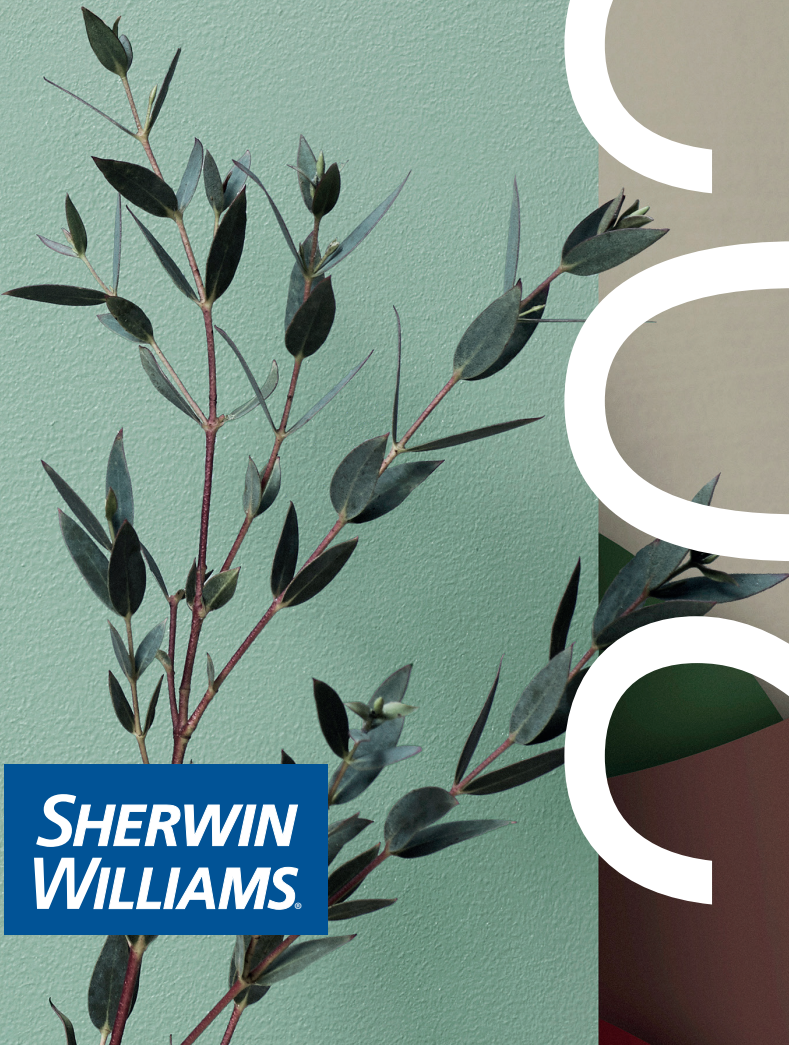


INTERIOR COLOUR TRENDS

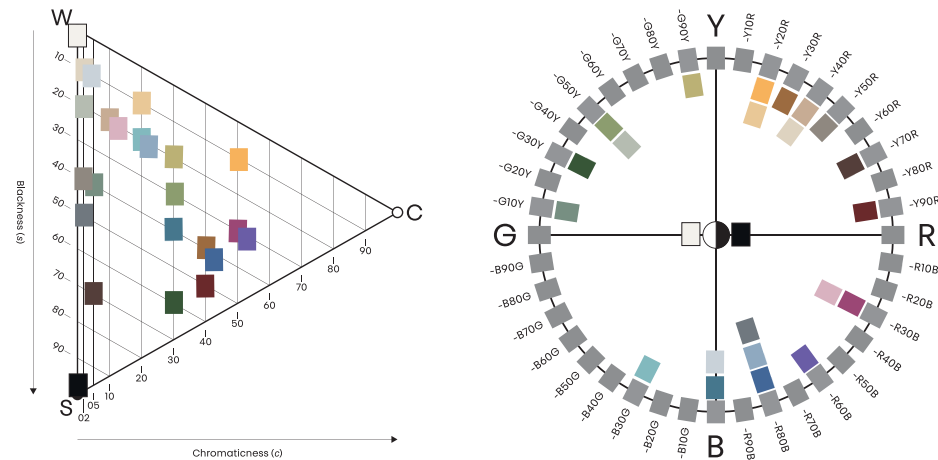
By NCS Colour

2021+



About

INTERIOR COLOUR TRENDS



Our colour preferences change over time. These are gradual changes of whether we like yellow, red, blue or green or if the colour should be light, dark, neutral or chromatic.

All colours already exist. The study of colour trends differs from the study of other trends. It is about understanding how our use of colour changes over time.

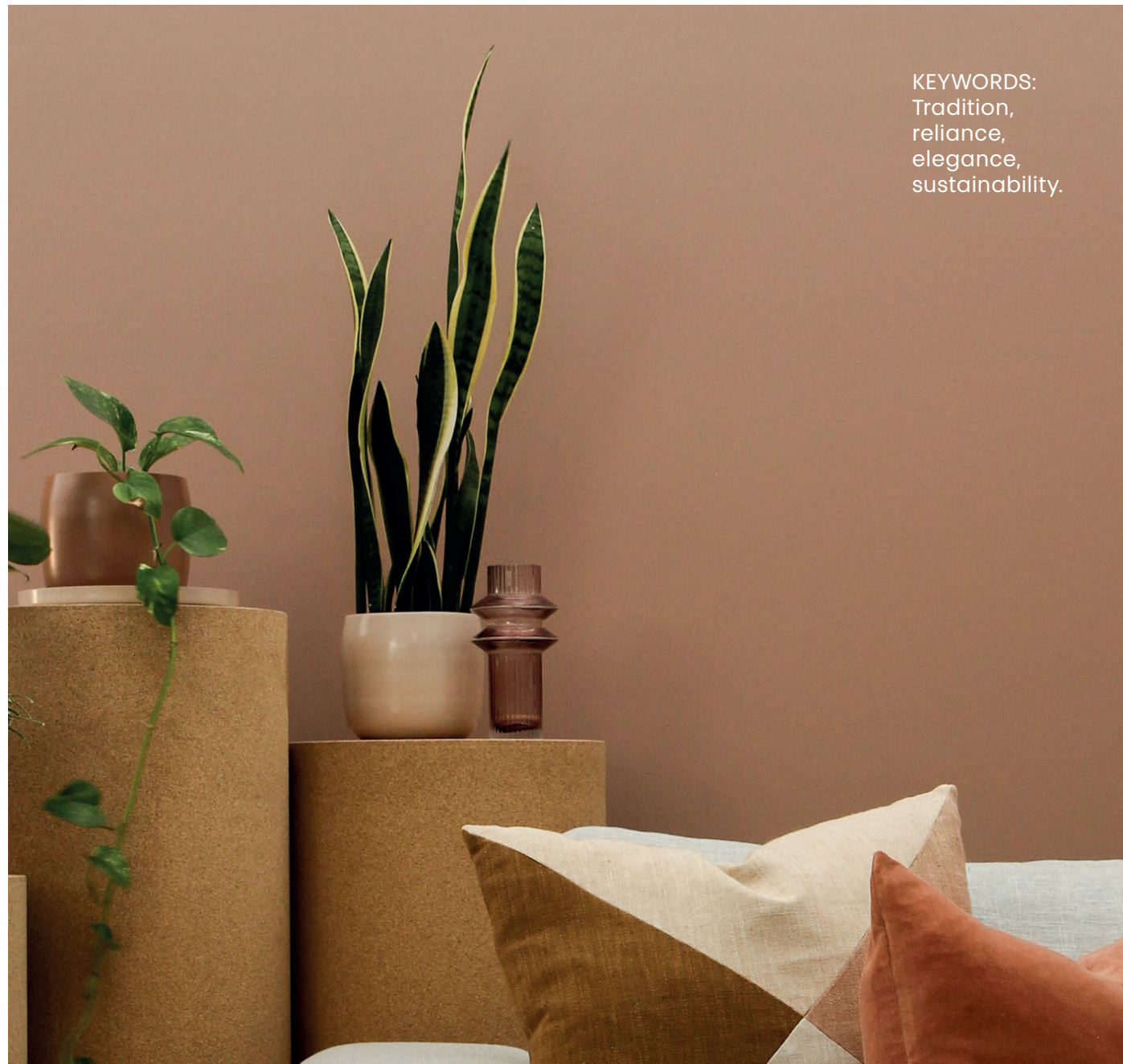
We often get to hear that colours of past decades are back in fashion. In fact, colour trends are a repetitive cycle of preferences. Furthermore, external factors also affect how these colour preferences move to certain areas of nuances and hues. Colour truly is psychology.

Our home is our castle. It is a place where we want to feel good. The colours we choose to surround ourselves with are an important part in our well-being. The colour trends of today are easy to embrace and welcome into our homes.



Trend #1

ZIENCE

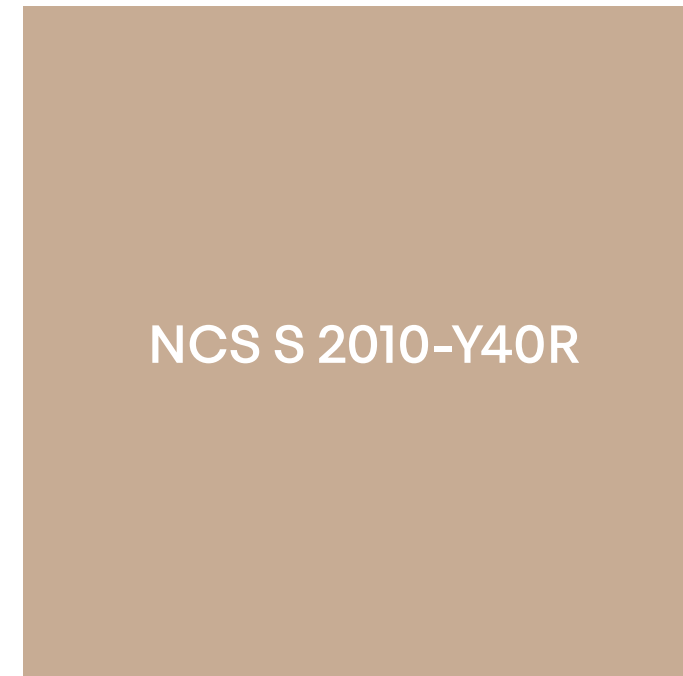


KEYWORDS:
Tradition,
reliance,
elegance,
sustainability.

This image is for inspiration only and not an actual representation of the colours mentioned.

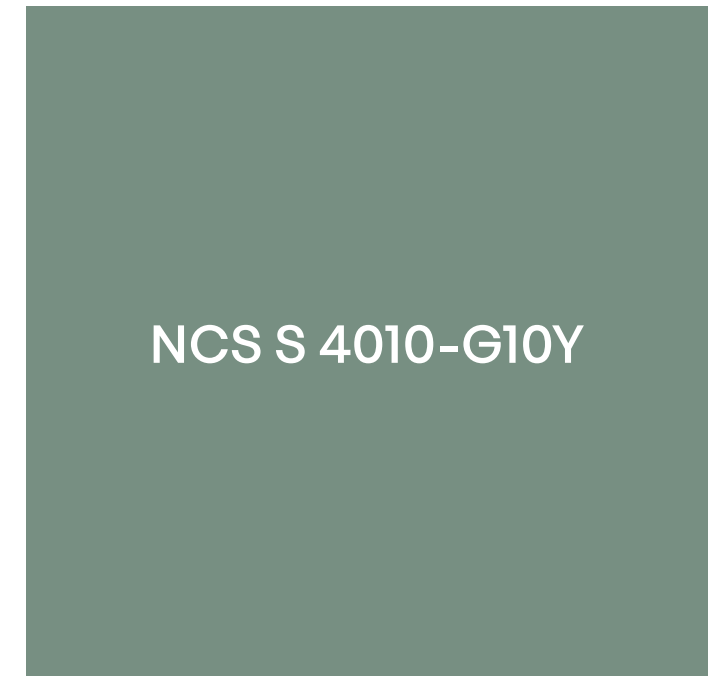
The elegant, sustainable, and traditional room

In this room everyone will feel at home since these colours always have existed in our spaces. They are based on traditional and natural pigments that all of us can relate to, understand and trust. The dark green, red and the golden ochre give us a feeling of a sustainable luxury, while the lighter wall colours are a celebration to everything that is right and sustainable.



NCS S 2010-Y40R

This beige colour is reddish and warm. It gives the room a nice balance of light and warmth, without becoming too neutral. It is a perfect colour for any room.



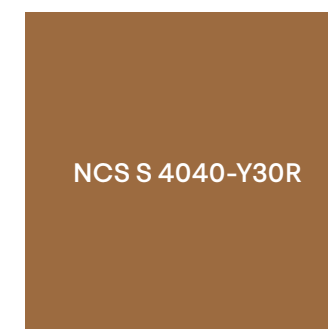
NCS S 4010-G10Y

This green is lighter and less chromatic than the chlorophyll green, but the hue is similar. Hence, this beautiful green colour is natural and very easy to like and understand. The blackness of this colour gives your room a distinct personality of sustainability and elegance.

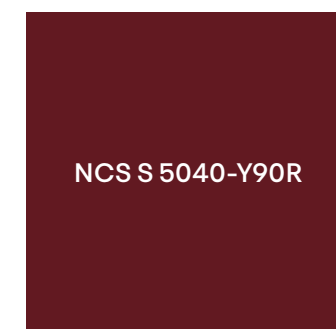
COMBINE WITH:



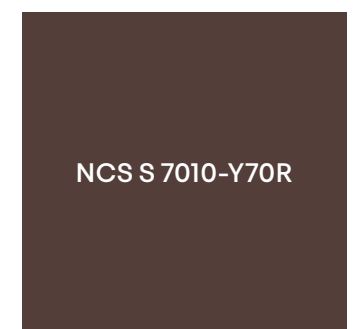
NCS S 6030-G30Y



NCS S 4040-Y30R



NCS S 5040-Y90R



NCS S 7010-Y70R

This is a printed product, hence the colour accuracy cannot be assured. For an accurate visual colour reference, please use NCS Design Tools such as NCS Index.

COMMENT BY NCS COLOUR EXPERT:

This group of colours can be found in most collections of traditional pigments in the world. The darker shades are very elegant and spiritual and can be used both for accents and for the creation of rooms with character. The lighter shades are perfect wall colours for any home.

Trend #2

ONE

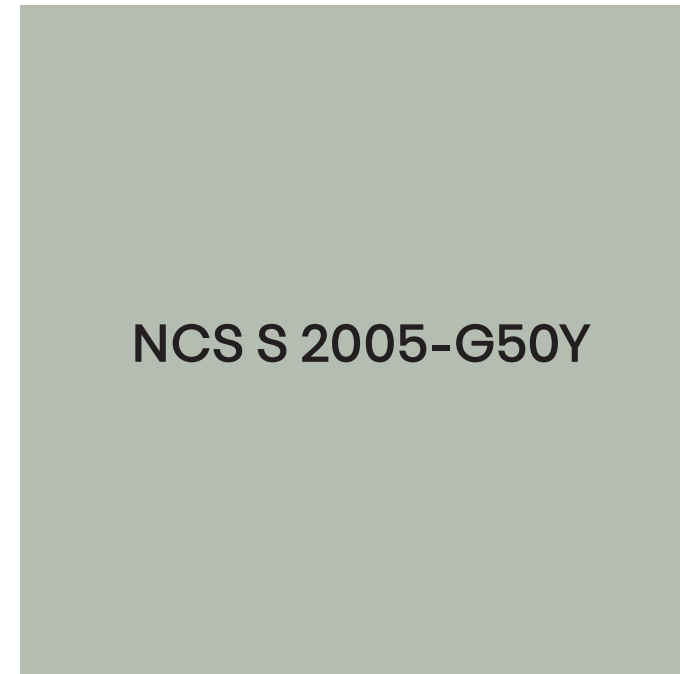


KEYWORDS:
Nature, origin,
sustainability,
folklore, roots.

This image is for inspiration only and not an actual representation of the colours mentioned.

A relaxing room with references to nature

The ONE room is calm and relaxing. It gives a feeling of putting our feet on the ground and spending time in nature. It is a tribute to sustainability and the need to be one with our nature.



NCS S 2005-G50Y

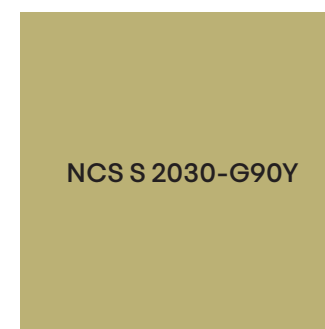
This neutral green is a clear trend direction toward lighter, more neutral, greenish shades. As it is slightly tinted to a green-yellow natural colour, it gives us a perfect feeling of calm and comfort in connection to nature.



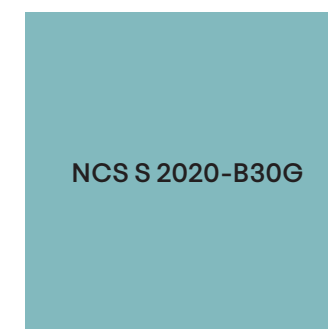
NCS S 4005-Y50R

This brownish colour will not darken your room. It will give the room an aspect of sustainability and it will give it character. It is a darker, neutral colour with both redness and yellowness which makes it a warm and comforting colour.

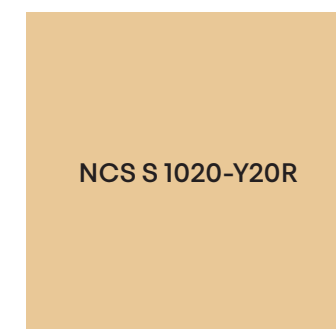
COMBINE WITH:



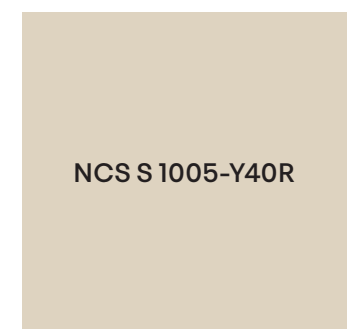
NCS S 2030-G90Y



NCS S 2020-B30G



NCS S 1020-Y20R



NCS S 1005-Y40R

This is a printed product, hence the colour accuracy cannot be assured.
For an accurate visual colour reference, please use NCS Design Tools such as NCS Index.

COMMENT BY NCS COLOUR EXPERT:

These colours have a very clear trend direction of our colour preferences for the coming years. Our preferences are drifting toward lighter and more neutral colours. These are pastels of nature. They represent a mood, driven by urban people who have discovered the beauty and the wonders of our nature. The turquoise gives a healthy contrast, adding a modern feeling of living on the countryside, but with an urban mentality.

Trend #3

SPRING REBELS



This image is for inspiration only and not an actual representation of the colours mentioned.

KEYWORDS:
Joy, spring,
flowers,
freedom.

NCS S 3030-G50Y

NCS S 1050-Y20R

A chromatic green that gives your room a very distinct character of meadow in the sun light. It is a perfect colour for a living room where you can have details of other colours from this trend group.

Yellow and orange have been very important colours. This colour is in between yellow and orange – a synergy between the two. It is a colour full of light and warmth that will highlight your room and give feelings of being in the sun. Balance this colour with any of the darker shades in the same group to have a true feeling of spring and happiness.

COMBINE WITH:

NCS S 1020-R30B

NCS S 3050-R60B

NCS S 3050-R30B

NCS S 4030-B

This is a printed product, hence the colour accuracy cannot be assured.
For an accurate visual colour reference, please use NCS Design Tools such as NCS Index.

The room of joy and spring feelings

This group of colours is an expression and celebration of happiness and relief. The colours are spring colours but not too chromatic as our preferences are beginning to be a little more balanced. Use one or more of these colours together to create the feeling of running into a spring meadow.

COMMENT BY NCS COLOUR EXPERT:

This is a group of colours that can and should be used together, even to make bolder patterns. It is the constellation of colours that will give you feeling of spring, freedom and joy. All the colours except the light pink are similar in chromaticness which make them easy to use together. They are complementary to each other which will make them stand out. Together, they form a very vivid and impressive combination!

Trend #4

ZERO

KEYWORDS:
Contrasts, pure,
reliable.



This image is for inspiration only and not an actual representation of the colours mentioned.

The trendy room

The ZERO room is pure trend. A white, grey or black room is seldom trendy. However, a room with contrasts of black, white and/or grey together with blue accents – or vice versa, is on trend.



NCS S 2020-R80B

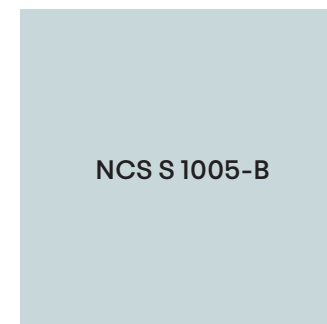
This light reddish blue is a great wall colour. Daylight will reinforce this colour to be more chromatic but never too much. Together with any of the neutrals it will make the room feel light and soothing.



NCS S 5005-R80B

This mid-grey bluish colour will also be perceived more bluish with daylight. It is a darker shade but will give the room a character of aesthetic seriousness.

COMBINE WITH:



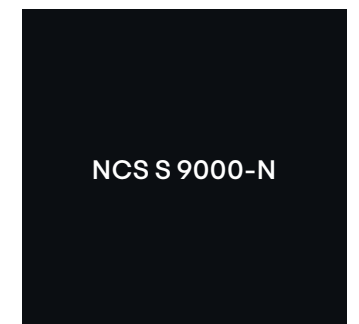
NCS S 1005-B



NCS S 0300-N



NCS S 4040-R80B



NCS S 9000-N

This is a printed product, hence the colour accuracy cannot be assured. For an accurate visual colour reference, please use NCS Design Tools such as NCS Index.

COMMENT BY NCS COLOUR EXPERT:

These colours are for those who want to stand in the front line. It is never about using white, grey or black only, it is about contrasting two or more of the colours. The main colour can either be the neutrals or the blues. Contrast is key.

NCS Colour collaboration

INTERIOR COLOUR TRENDS

NCS Interior Colour Trends 2022+ is a unique report on our colour preferences for the following years. It is developed by internationally renowned colour experts in collaboration with the team at NCS Colour.

This special edition focuses on global Interior Colour Trends. The colour palettes are relevant to suit any market and country.

This folder is intended for inspiration only. Always confirm your colour choice by using an official NCS Quality Level 1 sample before making final colour decisions. Remember that the appearance of a colour also is influenced by factors such as the size of the wall, lighting conditions etc. Please talk to your colour advisor for proper guidance and advice.

Meet the team behind NCS Colour Trends 2022+

Emma Clerici & Manuela Bonaiti; founders of Baolab. Karl Johan Bertilsson; Creative Director, NCS Colour, Kun Dai; CEO, Kun Dai Architects. Laura Perryman, Colour, Material and Trend Expert, Montaha Hidefi; VP Color Forecasting, Color Marketing Group, Weiwei Lin; Chief CMF Researcher and textile designer of Kun Dai's interior design group.

Since 2006, we have a continuous collaboration with Color Marketing Group, USA.

NCS COLOUR AND NATURAL COLOUR SYSTEM®©

NCS Colour is a global provider of colour communication solutions. We have been working with premium brands which are passionate about colour during the past 40 years.

NCS - Natural Colour System®© is used globally for colour communication and is scientifically based on how we perceive colours visually. Any surface colour can be described with a NCS Notation. With the NCS System as our core, we offer products and services that provide support to educate, design, visualise, produce, analyse and sell colour.

Today, NCS is used as a cross-industrial colour language and has an international presence in over 80 countries.

The NCS System is an international ASTM colour standard. NCS and the NCS Notations are used in countless of standards and instructions for accurate colour specification.





ncscolour.com

wood.sherwin.eu

NCS

**SHERWIN
WILLIAMS**

All rights reserved 2021. NCS Colour AB®©