



**SHERWIN
WILLIAMS®**

FIRETEX® CONCRETE WB

FIRE PROTECTIVE COATING
FOR INTERIOR CONCRETE STRUCTURES

Tested and classified for **ceilings and walls**
R30-R180 as well as **columns and beams R30-R120**



FIRETEX® CONCRETE WB HEAT INSULATING INTUMESCENT COATING



Simple - Fast - Safe

Concrete itself does not burn. Still, high temperatures can lead to changes in the material. In this case, concrete loses its insulating function and the reinforcing steel is exposed to critical temperatures.

Our thin film, water-based intumescent coating FIRETEX® Concrete WB reduces the heat transfer into the steel reinforcement and is particularly suitable for buildings where fire protection retrofitting is necessary due to a change of use or inventory.

YOUR BENEFITS AT A GLANCE

EASY-TO-USE

Fast, economic and space-saving solution where refurbishment or change of use requires increased fire resistance

ECOLOGICAL

Low VOC content of < 1 %; emission evaluation for German AgBB and French VOC meets classification A+

SAFE

Does not increase weight, prevents spalling for up to 120 minutes (in case of C90/105 up to 90 minutes).

MEASURABLE

Non-destructive determination of the dry film thickness by using an innovative method.

ECONOMICAL

Application directly to the surface without the need of a primer or mesh using lowest material consumption



WATER-BASED 1-PACK FIRE PROTECTIVE COATING FOR INTERIOR USE

The fire protective coating **FIRETEX® Concrete WB** can be applied directly to the concrete surface by hand or by airless spraying, without the need of a primer or mesh. In the event of fire it forms a thermally insulating layer. This prevents the concrete structure from spalling and delays the heat transfer into the steel reinforcement.

SYSTEM INFORMATION

- 0 Substrate: Reinforced concrete
- 1 Optional: Repair mortar
- 2 **FIRETEX® Concrete WB**
Intumescent coating
- 3 **FIRETEX® Top WB**
Colour topcoat



FIRE RESISTANCE UP TO 180 MINUTES



Columns and beams

R30 > R60 > R90 > R120 > R180

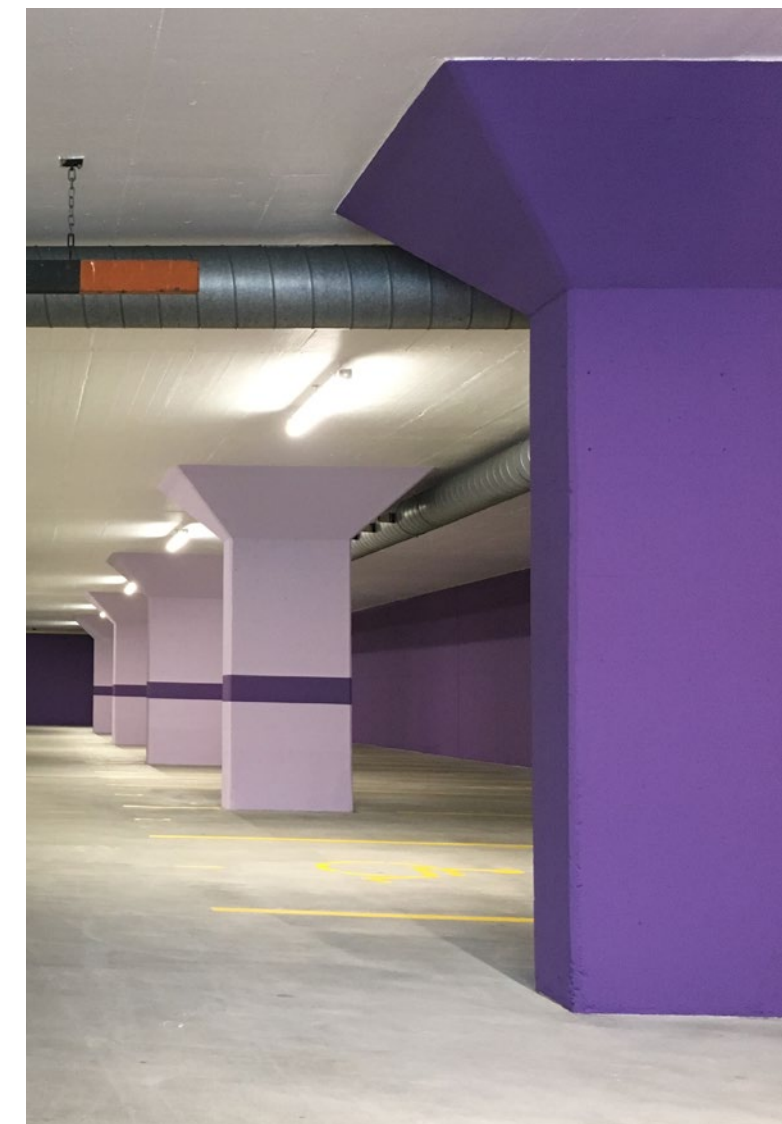
Ceiling and walls

COLOUR DESIGN WITH FIRETEX® TOP WB

FIRETEX® Concrete WB not only enhances fire protection requirements but if desired, the water-based 1-pack top coat FIRETEX® Top WB enables a decorative, coloured design in all RAL shades. This does not impair the thermally insulating layer underneath.

TESTS

- EN classification according to EN 13501-1 including smouldering fire curve
- The fire resistance of the FIRETEX® Concrete WB coating system has been successfully tested for the concrete structures:
 - 'walls and ceilings' in accordance with EN 13381- 3:2015 for the following concrete strengths: C 30/37 and C 50/60
 - 'columns and beams' in accordance with EN 13381- 3:2015 for the following concrete strengths: C 30/37, C 50/60 and C 90/105
- Non-destructive measurement and exact determination of the dry film thickness of the coating system on the concrete surface
- Tested coatings system including reprofiling mortars and fillers at ambient and fire conditions



ECOLOGICAL

As a water-based intumescent coating, FIRETEX® Concrete WB is ecologically harmless. The organic material content (VOC) is less than one percent. Thereby the coating is suitable for indoor use.

Certificates:

- Emission evaluation by AgBB and French No. 2011-321 (A+)
- DGNB, highest quality level (4)

COMPATIBLE WITH REPAIR MORTARS

Prior to the application of the fire protective coating, any damage to the concrete surface must be repaired. Repair mortars do not impair the function of the intumescent coating. This has been tested and verified in independent fire tests. Therefore, the newly developed **FIRETEX® Concrete WB** is suitable for the renovation or change of use of concrete structures.

TESTED PRODUCTS



NOTE

If you plan to use FIRETEX® Concrete WB in combination with fire resistant repair mortars, please contact our experts and receive individual advice for your project as well as information on tested products.

Contact us:
pm.de.info@sherwin.com



DEPARTMENT STORE IN MÜHLHEIM

CASE STUDY

In the former 'Woolworth House' in the city centre of Mühlheim an der Ruhr, the fire protection of the concrete ceiling had to be upgraded without loading the weight.

The depth of the ceiling did not comply to the building code and consequently could not protect the reinforcing steel to R60. The solution: FIRETEX® Concrete WB. Besides the concrete structure, the steel columns of the building were also protected by Sherwin-Williams using Pyroplast® ST-100.



Measurement of the wet film layer thickness directly after the application.

VIENNA AIRPORT

CASE STUDY

The concrete ceiling in Terminal 2 required a fire protection upgrade with a fire resistance class of R90.

Because of the convincing properties of FIRETEX® Concrete WB, the parties involved chose the water-based fire protective coating. It was applied to an area of approx. 6,500 m² using an airless spray application method.

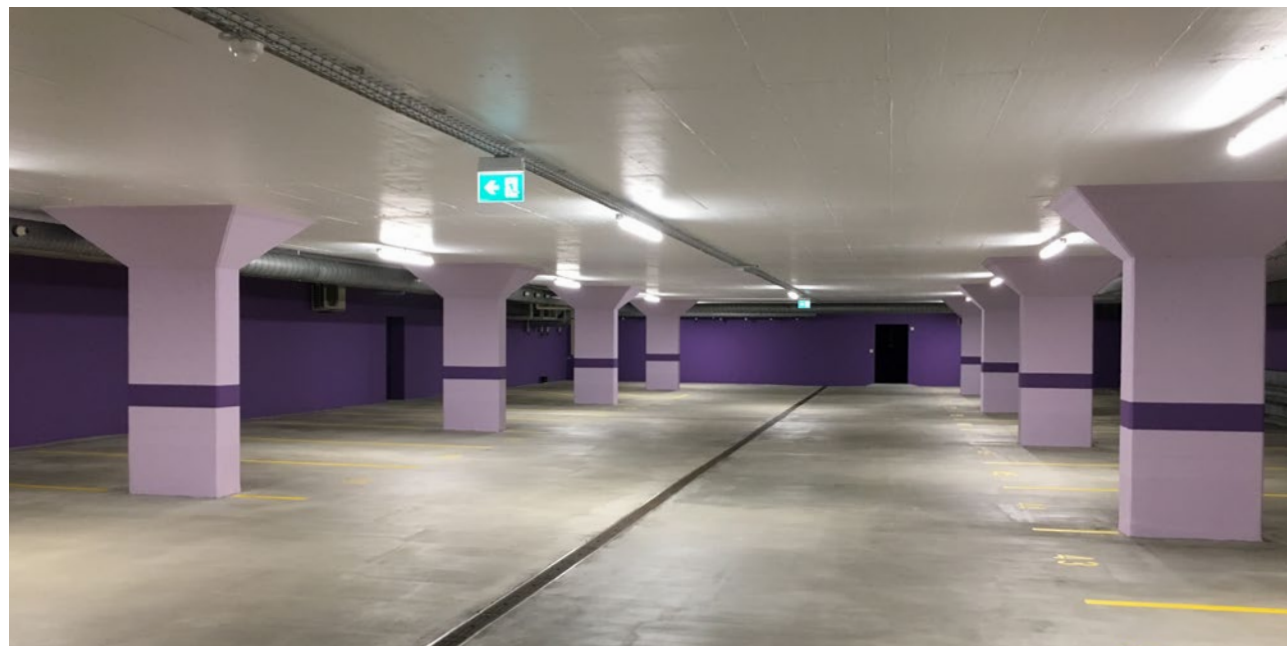


It was applied directly to the concrete ceiling using an airless spray application method.

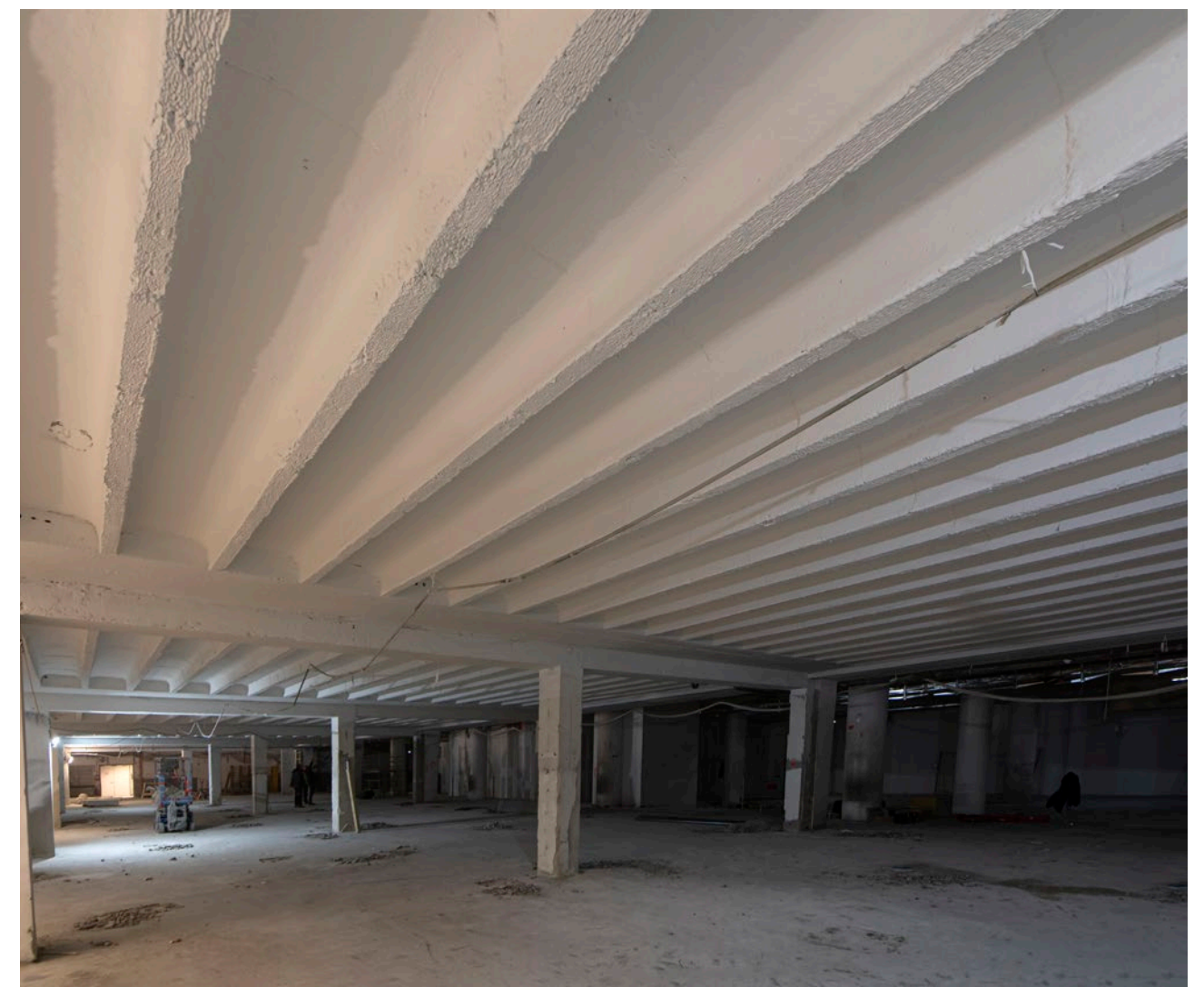
RESTORATION OF AN UNDERGROUND CAR PARK IN ESCHEN

CASE STUDY

The fire protection of the underground car park at the Unterland school centre in Eschen, Principality of Liechtenstein, has been restored in 2019. The concrete ceiling of the car park was coated with FIRETEX® Concrete WB. Due to the simple processing and the possibility of colour design, the building owners chose the new fire protective coating from Sherwin-Williams.



Ceilings and columns freshly restored with FIRETEX® Concrete WB.



FIRETEX® Concrete WB was used on an area of approx. 6,500 m² of Terminal 2 at Vienna airport.

OUR COMPETENCE

In the development and production of our intumescent coatings, we focus on high-quality and sustainable solutions focused on the success of our customers and the safety of people, buildings and the environment. Every batch of our fire protection coatings is fire tested before use.

WHEN EVERY SECOND COUNTS:

FIRETEX®, Unitherm® and Pyroplast® fire protective coating systems for

STEEL



WOOD



CONCRETE



CORROSION PROTECTION - PROVEN AND INNOVATIVE

In addition to fire protection, we are a trusted resource for the highest requirements in corrosion protection for many decades. With world-class industry subject matter expertise, unparalleled technical and specification service and unmatched regional commercial team support to our customers around the globe, we offer high-performance coating systems to help customers achieve smarter, time-tested asset protection.

We serve a wide array of markets across our rapidly growing international distribution footprint, including

- Steel structures
- Hydraulic steel structures
- Infrastructure
- Tank protection and chemistry
- Power supply
- Wind power

Learn more about our solutions at protectiveeu.sherwin-williams.com

SHERWIN-WILLIAMS PROTECTIVE & MARINE

DO YOU HAVE QUESTIONS OR WOULD YOU LIKE TO ORDER?

Don't hesitate to contact your local customer service team:



Germany:
+49 7042 109 4000
pm.kundenservice@sherwin.com



Hungary:
+48 882 817 420
cs.pm@sherwin.com



Italy:
+39 051 770 612
cspm.italy@sherwin.com



Poland:
+48 886 342 873
cs.pm@sherwin.com



Romania:
+40 256 420 320
sales.balkan@sherwin.com



Spain:
+34 96 121 89 80
pedidos.valencia@sherwin.com



Switzerland:
+41 44 936 77 77
cspmbubikon@sherwin.com



Sweden:
+46 381 26104
cspm.sweden@sherwin.com



United Kingdom:
+44 1204 556420
sales.uk@sherwin.com

For any other European country please contact:

International (English):
+49 7042 109 4400
pm.customerservice@sherwin.com

FIRETEX[®] CONCRETE WB

FIRE PROTECTIVE COATING FOR INTERIOR CONCRETE STRUCTURES

THE SHERWIN-WILLIAMS DIFFERENCE

Sherwin-Williams Protective & Marine delivers world-class industry subject matter expertise, unparalleled technical and specification service, and unmatched regional commercial team support to our customers around the globe. Our broad portfolio of high-performance coatings and systems - including protective liquid and powder, fire protection and resinous flooring - excel at combating corrosion and help customers achieve smarter, time-tested asset protection. We serve a wide array of markets across our rapidly growing international distribution footprint, including Bridge & Highway, Energy, High Value Infrastructure, Manufacturing & Processing, Marine, Rail, Power and Water & Wastewater.

SHERWIN-WILLIAMS

protectiveeu.sherwin-williams.com

United Kingdom: +44 1204 556420
sales.uk@sherwin.com

Romania: +40 256 420 320
sales.balkan@sherwin.com

Sweden: +46 381 26104
cspm.sweden@sherwin.com

Switzerland: +41 44 936 77 77
cspmbubikon@sherwin.com

Italy: +39 051 770 612
cspm.italy@sherwin.com

Germany: +49 7042 109 4000
pm.kundenservice@sherwin.com

Spain: +34 96 121 89 80
pedidos.valencia@sherwin.com

Hungary: +48 882 817 420
cs.pm@sherwin.com

Poland: +48 693 778 031
cs.pm@sherwin.com

Other countries (English): +49 7042 109 4400
pm.customerservice@sherwin.com