



KEEPING EVERYONE MOVING WITH ANTI-CORROSION SYSTEMS FOR A BUSY CITY

Avonmouth Bridge is a twin box girder cantilever type bridge that spans the river Avon between junctions 18 and 19 of the M5 motorway and was opened to public traffic in 1974. Originally it was built as a three-lane highway with a cycle and footpath also attached.

The bridge is 1,388m long, 40m wide, 30m high and spans 174m over the river Avon estuary. There are eighteen spans in all, ten on the north side and eight on the south side. The bridge was built so that traffic travelling to and from the south-west of England could bypass the city of Bristol.

AN INCREASE IN TRAFFIC NECESSITATED WIDENING AND STRENGTHENING THE BRIDGE IN THE 1990'S TO COPE WITH THE EXTRA LOAD IMPOSED ON IT. IN 2002, A PAINTING PROGRAMME WAS UNDERTAKEN TO COMPLETELY REPAINT THE EXTERNAL SURFACES OF THE BRIDGE. SHERWIN-WILLIAMS WAS ASKED TO SUPPLY A HIGHWAYS AGENCY COMPLIANT ANTI-CORROSION COATINGS SYSTEM FOR THE PROJECT THAT WOULD PROTECT THE STEELWORK FOR A MINIMUM PERIOD OF 20 YEARS TO FIRST MAINTENANCE.

CLIENT:
Highways Agency

APPLICATOR:
Interserve Industrial Services

STRUCTURAL ENGINEER:
Hyder Consulting

FROM SPEC TO PROTECT
protectiveemea.sherwin-williams.com

**SHERWIN
WILLIAMS®**

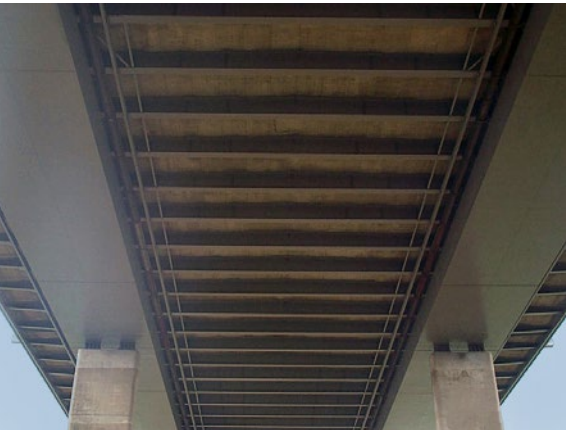
M5 AVONMOUTH ROAD BRIDGE, BRISTOL



SOLUTION

Sherwin-Williams worked with Interserve to provide the best and most cost-effective coating system for this bridge, supplying the paint in 200L barrels to be used in conjunction with specialist application equipment which allowed the paint to be housed safely at ground level rather than having to carry, store and mix the paint on the bridge itself.

Sherwin-Williams offered full specification/technical and practical advice from the early project stages and carried out regular site visits for the two-year duration of the project. This helped to ensure that the work was completed on time to the satisfaction of all interested parties.



SUBSTRATE

Steel blast cleaned to Sa2½.

REQUIREMENTS

20 years external corrosion protection.

SPECIFICATIONS

Transgard™ TG111V2, Macropoxy™ 267, Transgard TG169.

AREA COATED

Approx 110,000 m² of structural steelwork.



FEATURED PRODUCTS

	Highways Agency Item no.	Product type
Transgard TG111V2	111	Zinc phosphate primer/buildcoat
Macropoxy 267	112	Epoxy MIO intermediate
Transgard TG169	169	Acrylic urethane semi-gloss topcoat

THE SHERWIN-WILLIAMS DIFFERENCE

Sherwin-Williams Protective & Marine delivers world-class industry subject matter expertise, unparalleled technical and specification service, and unmatched regional commercial team support to our customers around the globe. Our broad portfolio of high-performance coatings and systems that excel at combating corrosion helps customers achieve smarter, time-tested asset protection. We serve a wide array of markets across our rapidly growing international distribution footprint, including oil and gas, water and wastewater, bridge and highway, steel fabrication, flooring, food and beverage, rail and power, marine and passive fire protection.

SHERWIN-WILLIAMS®

protectiveemea.sherwin-williams.com
07/21 EMEA10071/V04/PC

United Kingdom:

+44 (0)1204 556420
sales.uk@sherwin.com

Europe and Africa:

+44 (0)1204 556454
sales.uk@sherwin.com

Middle East:

+971 4 8840200
sales.me@sherwin.com

India:

+91 9871900878
pmsales.india@sherwin.com