

OPTI-CHECK™



OPTICALLY ACTIVATED PIGMENTS (OAP)

Opti-Check™ Technology uses a fluorescing pigmentation that illuminates the coating for instant verification under ultraviolet light. Opti-Check is available in a variety of tank lining products, allowing applicators to check the coating instantly for:

- Pinholes and holidays
- Uniform coverage
- Correct film thickness.

The fluorescing technology significantly extends the service life of tank linings by illuminating the coating during application by using a portable ASTM E2501 approved light source.

US NAVY INSPECTION RESULTS FOUND...

- 50–70% Improved productivity
- 25% More defects revealed
- Improved visibility of low film thickness on edges
- Pinhole defects visible from 2x standoff distance.



Under white light inspection pinholes are difficult to see.



Under UV light inspection pinholes are easy to identify.

FEATURES

- Uses eye-safe appropriate UV light
- Quickly highlights defects, holidays and pinholes
- Highlights low film thicknesses during application
- Can be used to “verify” stripe coating
- No flashlight glare under UV lighting.

BENEFITS

- Compatibility with marginally prepared surfaces
- Makes defects easy to identify allowing for faster and more thorough inspection
- Saves time and improves productivity of coating inspection
- Extends service life of coating by ensuring correct film thickness is achieved
- Helps assure correct application.

FROM SPEC TO PROTECT

protectiveemea.sherwin-williams.com

**SHERWIN
WILLIAMS®**



TANK LININGS WITH OPTI-CHECK™ TECHNOLOGY

Fast Clad™ ER

An edge retentive ultra-high solids epoxy amine coating available with Opti-Check for rapid holiday detection and ultra-fast return-to-service (24 hrs). Designed for immersion service in seawater ballast tanks, fuel/seawater ballast tanks and petroleum storage tanks. Low VOC and low odour.

Dura-Plate™ UHS

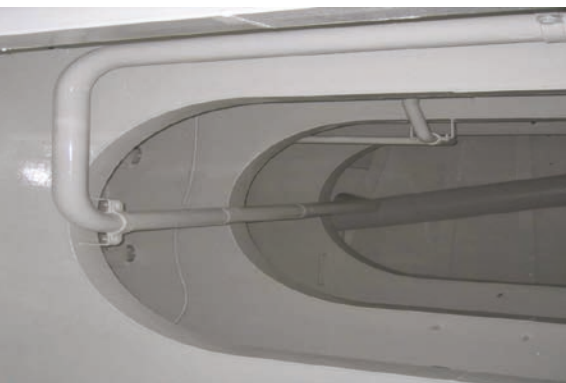
An ultra-high solids epoxy amine available with Opti-Check for rapid holiday detection, engineered specifically for immersion service in ballast tanks, oil tanks and refined fuel storage tanks. The high build, edge-retentive properties of Dura-Plate UHS provide superior protection compared to conventional epoxies. Low VOC and low odour.

Macropoxy™ 646

A high-solids, high-build, fast-drying epoxy classified by UL to ANSI/NSF 61 for use as a tank lining for drinking water storage tanks. The high-solids formulation extends service life by ensuring adequate protection of sharp edges, corners and welds.

Dura-Plate™ UHS Primer

An ultra-high solids epoxy amine primer now available with Opti-Check for rapid holiday detection. For use in immersion service in ballast tanks, oil tanks and refined fuel storage tanks. Dura-Plate UHS Primer provides excellent surface wetting and adhesion properties, especially over rust-pitted steel surfaces.



THE SHERWIN-WILLIAMS DIFFERENCE

Sherwin-Williams Protective & Marine delivers world-class industry subject matter expertise, unparalleled technical and specification service, and unmatched regional commercial team support to our customers around the globe. Our broad portfolio of high-performance coatings and systems that excel at combating corrosion helps customers achieve smarter, time-tested asset protection. We serve a wide array of industries across our rapidly growing international distribution footprint, including oil and gas, water and wastewater, bridge and highway, steel fabrication, flooring, food and beverage, rail and power, and marine.

SHERWIN-WILLIAMS®

protectiveemea.sherwin-williams.com
05/21 EMEA10039/V03/PC

United Kingdom:

+44 (0)1204 556420
enquiries.uk@sherwin.com

Europe and Africa:

+44 (0)1204 556454
emea.pm.exportsales@sherwin.com

Middle East:

+971 4 8840200
sales.me@sherwin.com

India:

+91 9871900878
pmsales.india@sherwin.com