



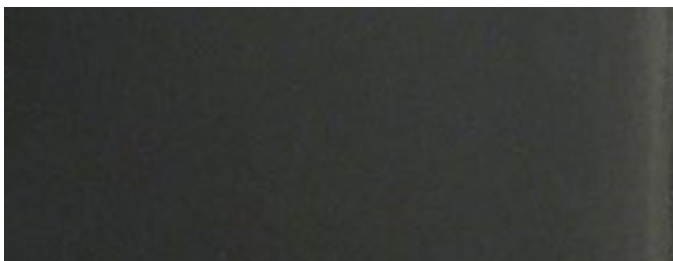
A HIGH-SOLIDS EPOXY COATING FOR LONG-TERM AESTHETICS

A railcar is only as valuable as the time it spends on the tracks. Every moment in the repair yard is a lost opportunity to make your assets fully utilized and cost effective, delivering critical goods and services to their destinations.

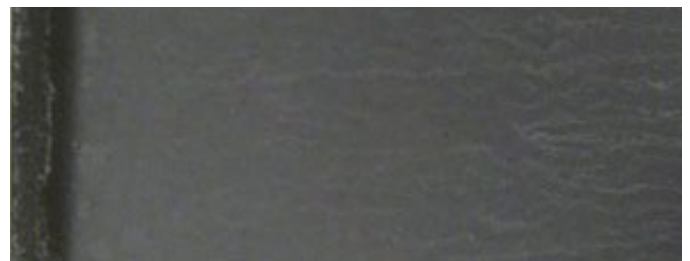
To realize the goal of extended maintenance cycles, Sherwin-Williams developed CarClad Macropoxy 4200XL, a high-solids epoxy that retains its black color on the exterior of railcars. This exterior rail coating provides economical and effective protection from the elements, helping to reduce maintenance costs and enhance perceived railcar value.

HIGHLIGHTS

- Retains black color of railcars, protecting against UV weathering
- Hangs at the proper film builds (4-6 DFT) with the ability to hang additional wet mils when overlapping coats are necessary
- Can be applied direct to metal (DTM) in one coat or over existing coatings with good edge build
- Single-leg and plural-component spray; may also be applied with a brush or roller



Macropoxy 4200XL
Weathered for 1750 hours



Competition's Traditional Epoxy
Weathered for 1750 hours

FROM SPEC TO PROTECT

sherwin-williams.com/protective

12-5-22_acc
[Accessibility Statement](#)

CARCLAD[®] MACROPOXY 4200XL

A HIGH-SOLIDS EPOXY COATING FOR LONG-TERM AESTHETICS

EXTENDED LIFE OF ASSETS



- Enhance the appearance and perceived value of your railcars through black color retention
- Extend the life of your asset with protection from corrosion, abrasion, solvents and chemicals
- Minimize film loss with UV exposure - 10% less film loss than other high-solids epoxy coatings

COST EFFECTIVENESS



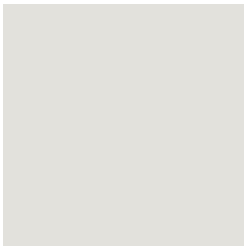
- Extend the maintenance interval for railcars
- Maximize your investment with the lowest applied cost among high-solids epoxies and other coating technologies

APPLICATION TIME SAVINGS



- Reduce passes by application direct to metal (DTM) in one coat or over existing coatings
- Expand application times with a solvent-based formulation for low temperature sprays
- Accelerate your application with dry-to-touch in seven hours, ready for recoat in 24 hours and stencil in four hours

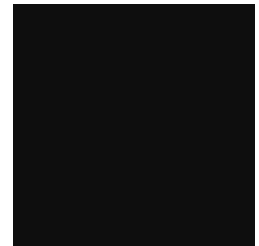
AVAILABLE COLORS



White



Hopper Gray



Black

Colors are an approximate match.

SERVICE THAT STANDS OUT

The Products You Need Right Now

Get the products you need with the same or next-day delivery, in addition to local inventory at more than 4,750 company-owned distribution points.

Technical Service for Optimal Applications

Our technical service team is filled with industry experts, armed with manufacturer equipment training to ensure proficiency throughout the entire coatings process.

THE SHERWIN-WILLIAMS DIFFERENCE

Sherwin-Williams Protective & Marine delivers world-class industry subject matter expertise, unparalleled technical and specification service, and unmatched regional commercial team support to our customers around the globe.

The industry experts at Sherwin-Williams Protective & Marine are renowned authorities in their respective fields of knowledge - including Bridge & Highway, Flooring, Food & Beverage, Fire Protection, Freight Rail, Marine, Oil & Gas, Power Generation, Steel Fabrication and Water & Wastewater. Our global technology expertise in areas including tank linings, passive fire protection, corrosion under insulation (CUI) testing and fusion-bonded epoxy drives game-changing innovation and influences global industry standards.

North America

sherwin-williams.com/protective
swprotective@sherwin.com

SHERWIN-WILLIAMS[®]

©2022 The Sherwin-Williams Company
Protective & Marine Coatings
PM-605955-SS 12/22