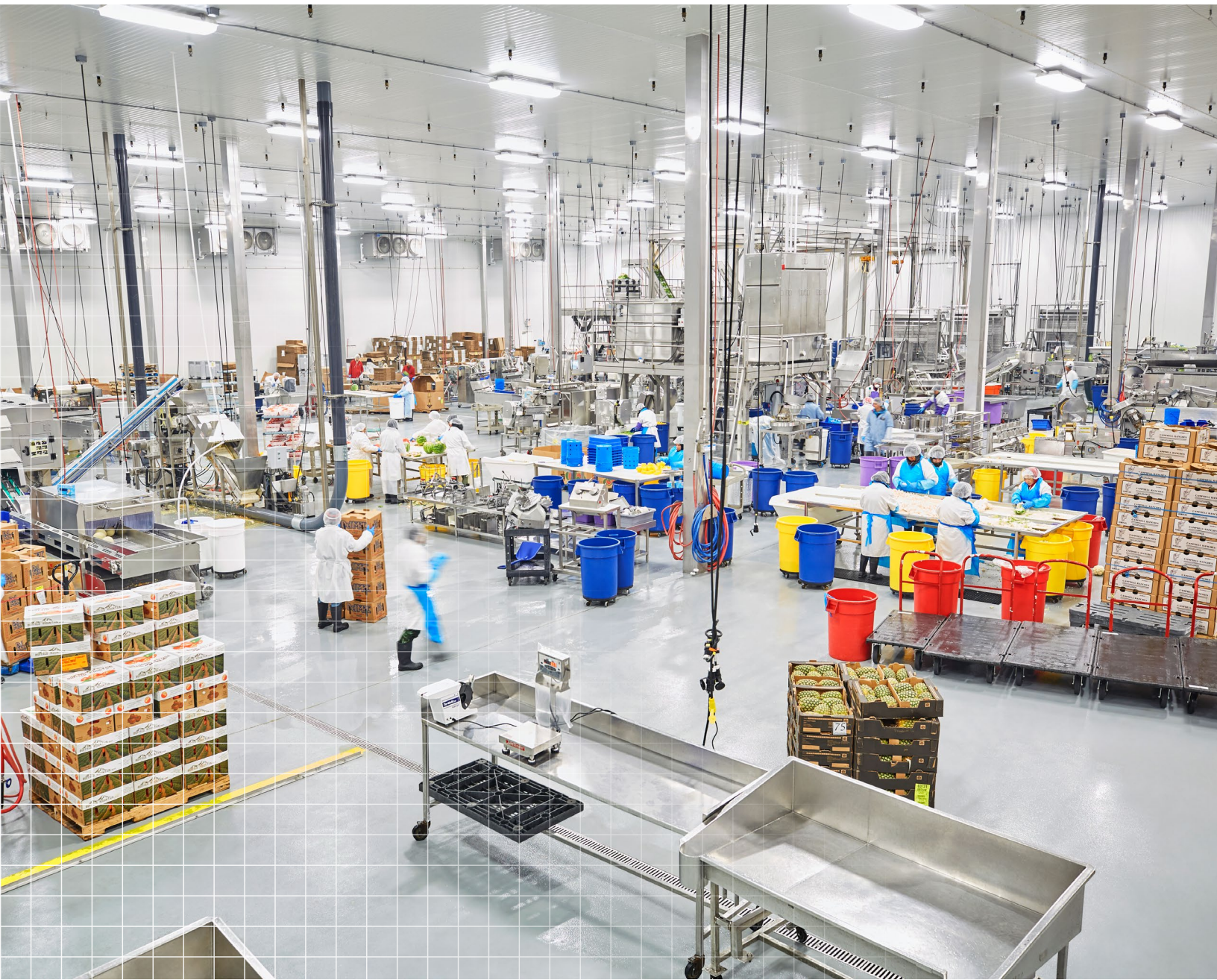


FOOD & BEVERAGE FACILITIES GUIDE

CREATING A CLEAN, SAFE AND COMPLIANT ENVIRONMENT





SHERWIN-WILLIAMS PROVIDES HIGH-PERFORMANCE SOLUTIONS THAT MEET YOUR REQUIREMENTS FOR DURABILITY, MINIMAL DOWNTIME AND COMPLIANCE.

We understand the unique challenges of the diverse food and beverage industry and provide a wide range of innovative coatings solutions and services that provide maximum asset protection, prevention of concerns regarding safety and contamination and opportunities to reduce long-term maintenance costs.

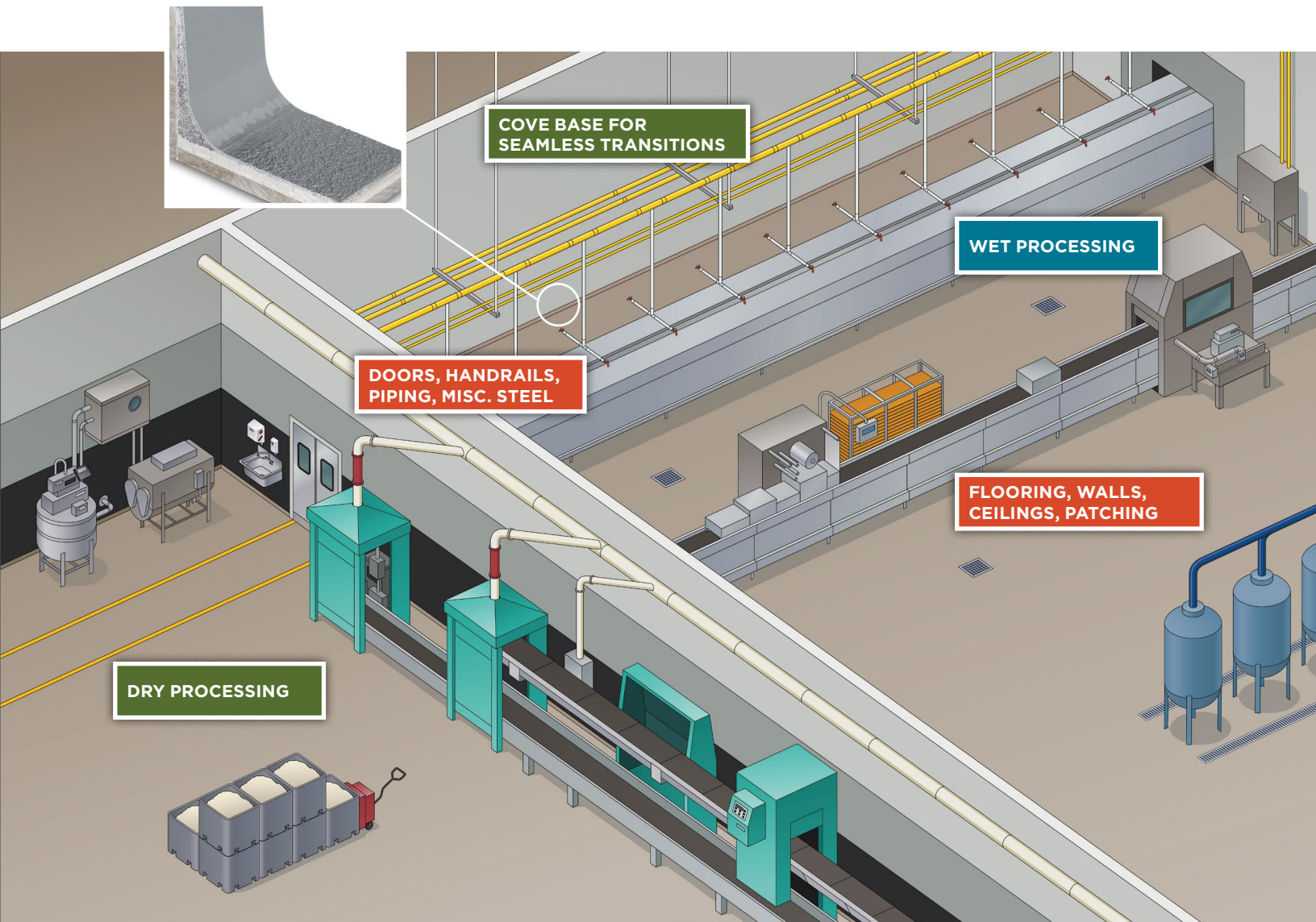
As your one-stop shop for solutions that keep food and beverage facilities covered, Sherwin-Williams offers:

- A wide range of high-performance coating systems for walls, floors, ceilings and everywhere in between
- Quick return-to-service coatings that require minimal downtime
- Coatings that meet the strict mandates of the USDA, FDA, CFIA and NSF in addition to addressing the issues brought forth by the Food Safety Modernization Act and Global Food Safety Initiative
- Heavy-duty flooring and wall coatings systems with excellent chemical, thermal shock, and abrasion resistance
- Application tools and equipment to get the job done right
- Competitive uniform pricing, centralized account management and online ordering
- Team of technical experts to build a proactive MRO plan and keep your facility safe and compliant

WET AND DRY PROCESSING AREAS

At Sherwin-Williams, we provide a full range of coatings solutions from floor to ceiling. We specialize in developing specifications to meet all your performance, budget and deadline needs.

Wet and dry food and beverage processing environments demand the highest level of coatings performance. They are constantly exposed to splash, spillage and hazards that can cause sanitation or safety issues and can halt or shut down operations. From animal oils and fats to raw materials used in beverage making, potential sources of bacteria threaten these environments on a daily basis. And with routine washdowns and sloped floors, these areas can be very difficult to maintain and upgrade. That's where Sherwin-Williams can help create a safe, easy-to-clean environment with seamless transitions from walls to floors using durable, high performing coatings.



WET PROCESSING COATINGS SOLUTIONS

FLOORING

RESUFLO[™] SCREED TG46 STANDARD TROWELED MORTAR SYSTEM

Resufloor Screed TG46 protects substrates from conditions of heavy impact and wear along with resistance to many chemicals, acids and alkalis. It is a 1/8" - 1/4" high build resurfacing system utilizing an epoxy and silica aggregate mortar.

FEATURES:

- Protection against heavy impact and wear
- Resists degradation from many chemicals, acids and alkalis
- Wide range of colors available
- Customizable skid resistance
- Formulation available with a preservative to inhibit the growth of mildew on the coating surface

BENEFITS:

- Refurbishes damaged surfaces, extending the life of existing concrete
- Protects new concrete in heavy use environments

FASTOP[™] TOPFLOOR SL23 SELF-LEVELING URETHANE SLURRY SYSTEM

FasTop Topfloor SL13 is designed for light to moderate traffic and abuse while still providing the many benefits of a urethane concrete system. Protects concrete and steel substrates from thermal shock, impact, corrosion, chemical attack and abrasion. FasTop Topfloor SL23 is a self-leveling water-based urethane slurry system to be applied at 1/16" smooth finish or broadcast with aggregate to yield 1/8" thickness with a non-skid finish.

FEATURES:

- Moisture insensitive, can be applied to green concrete
- 8-hour cure and hardness to service development; low temperature cure to 35°F (2°C)
- Protection from thermal shock, impact and wear up to 220°F (104°C) direct steam
- Moderate chemical resistance

BENEFITS:

- Minimal downtime, quick turnaround
- Waterborne coating that allows moisture vapor transmission to take place
- Thermal shock resistant
- Long-lasting durability, less maintenance

FASTOP TOPFLOOR URETHANE SLURRY SYSTEM

FasTop Topfloor and FasTop Topfloor SL45 are designed to protect concrete and steel substrates from thermal shock, impact, corrosion, mild chemical attack and abrasion. They are waterborne urethane cementitious systems to be applied at nominal 3/16" thickness and broadcast to yield a 1/4" - 3/8" finished system. A decorative quartz broadcast may be specified as an upgrade to the standard systems.

FASTOP TOPFLOOR SL45 URETHANE SLURRY SYSTEM

FEATURES:

- Moisture insensitive, can be applied to green concrete or slightly damp substrates
- Rapid cure and hardness development
- Excellent physical and chemical properties
- Hot water or direct steam resistances up to 220°F (104°C) with very good chemical resistance

BENEFITS:

- 6-8 hour minimal downtime, quick turnaround
- Waterborne coating that allows moisture vapor transmission to take place
- Thermal shock resistant, less maintenance
- Long-lasting durability with tough impact resistant properties

WALLS

RESUWALL[™] AQUA WALL SYSTEM

Resuwall Aqua is a high-performance water-based epoxy for areas subjected to routine and aggressive wash down and sanitation practices. Resuwall Aqua is a multilayer, high-build wall and ceiling surfacing system utilizing an epoxy basecoat and topcoat for durability. The system is available with two coats, providing unique crack bridging and impact resistance. It can be used on CMU and poured concrete.

FEATURES:

- Very good chemical and abrasion resistance
- Excellent resistance to moisture and thermal shock
- Smooth and durable with excellent adhesion to concrete
- Highly washable surface that will inhibit growth of fungus or bacteria per test specified TT-P-34

BENEFITS:

- Can be applied over a slightly damp surface
- Unlimited S-W color selection
- Outstanding durability – product will not lose bond due to thermal shock
- Professional-looking wall coating that inhibits the growth of fungus or bacteria

RESUWALL AQUA FR WALL SYSTEM

Resuwall Aqua FR is a fiber-reinforced epoxy resin system designed for application to walls and ceilings in demanding environments such as food processing facilities. This unique resin combines the toughness expected from a fiber reinforced epoxy with the ease of application using a brush, roller or spray. Resuwall Aqua FR provides excellent performance properties including light (UV) resistance not typical of epoxy based systems. It can be used on drywall for enhanced reinforcement and durability.

FEATURES:

- Very good impact and abrasion resistance that resists cracking
- Very good chemical resistance; well suited for wash down areas
- Good color stability
- Provides a smooth, tight surface with a light stipple texture

BENEFITS:

- Outstanding durability and low maintenance
- Aesthetically pleasing with good color stability

RESUWALL FX WALL SYSTEM

Resuwall FX is a multi-layer, high build wall surfacing system utilizing two coats of a flexible epoxy membrane as a base and a high solids urethane enamel topcoat for chemical resistance, color and gloss retention. This unique system offers a competitive advantage over reinforced rigid epoxy systems, while providing excellent crack bridging and impact resistance.

FEATURES:

- Crack bridging and impact resistant
- UV resistant and color stable
- Thermal shock resistant
- Outstanding application properties

BENEFITS:

- Can be applied over a damp surface, allowing for quick return to service
- Unlimited S-W color selection
- Outstanding application properties enables easy installation
- Outstanding durability and low maintenance

SHER LOXANE[™] 800

Sherwin-Williams Sher-Loxane 800 is an advanced polysiloxane coating that helps you reduce total operational costs with corrosion protection for a wide range of applications.

FEATURES:

- Fast cure part B available for accelerated applications
- Spray, brush or roller application without thinning
- Compatible with multiple substrates found in food & beverage facilities
- One- or two-coat system

BENEFITS:

- Boosts cleanability from low surface tension
- Protects assets with excellent corrosion and chemical resistance
- Quick return to service
- Extends maintenance intervals through long-term durability

Select coatings may be formulated with a preservative to inhibit the growth of mildew on the select coating surface. All Systems are acceptable for use in USDA inspected facilities.

MODERATE: Suitable for occasional moisture and chemical exposure with semi-frequent wash downs

HEAVY: Suitable for constant moisture, chemical, thermal shock exposure with more frequent wash downs

EXTREME: Highest level of performance with regard to moisture, chemical, thermal shock exposure with high wash down frequency

DOORS, HANDRAILS, PIPING AND MISC. STEEL

PRO INDUSTRIAL™ URETHANE ALKYD Pro Industrial Urethane Alkyd is an abrasion resistant, high gloss urethane modified alkyd coating. It provides a durable, chip resistant hard film ideal for steel handrails, doors and piping.

FEATURES:

- Abrasion resistant
- Chip resistant

BENEFITS:

- Very durable hard film, less maintenance

CEILING

RESUWALL™ AQUA WALL SYSTEM Resuwall Aqua is a high-performance water-based epoxy for areas subjected to routine and aggressive wash down and sanitation practices. Resuwall Aqua is a multilayer, high build wall and ceiling surfacing system utilizing an epoxy basecoat and topcoat for durability. The system is available with two coats providing unique crack bridging and impact resistance. It can be used on CMU and poured concrete.

FEATURES:

- Very good chemical resistance and abrasion resistance
- Excellent resistance to moisture and thermal shock
- Smooth and durable with excellent adhesion to concrete
- Highly washable surface that will inhibit growth of fungus or bacteria per test specified TT-P-34

BENEFITS:

- Can be applied over a slightly damp surface
- Unlimited S-W color selection
- Long-lasting and durable – product will not lose bond due to thermal shock
- Professional looking wall coating that inhibits the growth of fungus or bacteria

COVE BASE

EPOXY COVE BASE Epoxy Cove Base is designed as an integral part of the flooring system to provide a seamless transition from the floor to wall. The vertical portion can be installed to any height at 1/16" to 1/4" thickness.

FEATURES:

- Provides a seamless, easy-to-clean transition between floor and wall

BENEFITS:

- Eliminates hard-to-reach angles and corners, enabling more thorough sanitation.

FAS TOP™ COVE BASE FasTop Cove Base is a urethane concrete system designed as an integral part of the flooring system to provide a seamless transition from the floor to wall. The vertical portion can be installed to any height at 1/16" to 1/4" thickness.

FEATURES:

- Waterborne coating, moisture insensitive, can be applied to green concrete
- Resistant to hot cooking oil and steam
- Low temperature cure
- Impact and thermal shock resistant

BENEFITS:

- Eliminates hard-to-reach angles and corners, enabling more thorough sanitation
- Excellent durability in challenging environments
- Quick turnaround time in low temperature areas such as cold storage/warehousing

INSULATED METAL PANEL

INSULATED METAL PANEL REPAIR SYSTEM Insulated Metal Panel is an insulative layer between sheet metal (metals) that provides a durable wall system for refrigeration applications. Typical areas of use are in walk-in coolers, walk-in freezers, refrigerated warehouses, insulated buildings, and blast freezers. Sherwin-Williams has unique and innovative systems to repair these areas. Please consult your Sales Professional for information on our Control-Tech IMP Flex-Wall System.

PATCHING

RESUTILE™ 4700 INSTANT PATCH Resutile 4700 is a two-component, multi-purpose urethane concrete repair material. Material is mixed and cured at room temperature for patching holes, cracks, depressions and other surface imperfections on a variety of substrates. Resutile 4700 sets within 2 minutes and the repaired area can be placed in service or recoated within 30 minutes at normal (approx. 70°F/21°C) room temperatures. In cold temperatures, larger batches can be mixed and applied as a floor finish.

FEATURES:

- Extremely fast cure - sets within 2 minutes
- Easy to mix, 1:1 pourable components or 22 ounce double barrel cartridges
- Cold temperature application at 0°F - 90°F (-18°C - 32°C)
- Non-shrinking, traffic bearing hardness

BENEFITS:

- Immediate return to service or serves as a solid repair material when recoating the floor
- Quick turnaround time in low temperature areas such as cold storage/warehousing
- Long-lasting durability, less maintenance
- User friendly application allows for quick installation

RESUFLOOR™ 3500 QUICK PATCH Resufloor 3500 is a two-component, multi-purpose, fast cure epoxy repair material. When mixed, the components thicken to provide an easy-to-apply paste for patching holes, cracks, depressions and other surface imperfections on a variety of substrates. The rapid curing material will provide a new flush surface ready for use or addition of protective coatings in 1-2 hours.

FEATURES:

- Easy to mix, 1:1 ratio
- Non-shrinking and non-sagging, can be sanded as spackling compound
- Moisture tolerant

BENEFITS:

- Quick turnaround time
- Durable coating in diverse environments

ARMORSEAL™ EXPRESSPATCH ArmorSeal ExpressPatch is a 100% solids, water-based urethane slurry mortar floor patch kit. It is designed to repair and protect concrete and masonry substrates from thermal shock, impact, corrosion, mild chemical attack and abrasion. It is to be applied at 3/16" minimum thickness (smooth) and broadcast to yield a 1/4" finished system (textured).

FEATURES:

- Inhibits microbial growth
- Low temperature application at 45°F - 80°F (7°C - 27°C) with very fast cure time
- Service temperatures from -50°F - 225°F (-45°C - 107°C)
- Can be applied to damp concrete

BENEFITS:

- Quick turnaround time in low temperature areas such as cold storage/warehousing
- Fast return to service – 6 hours
- Alternate applications – pea gravel can be added to produce a 6 inch mortar patching material



Cove base is installed to provide a seamless transition from the horizontal plane of a floor slab to the vertical plane of a wall system. Integrated cove base provides a seamless, hygienic transition that facilitates cleaning and sanitation operations. All Systems are acceptable for use in USDA inspected facilities

DRY PROCESSING COATINGS SOLUTIONS

FLOORING

RESUFLOTM 3746	Resuflo 3746 is a high performance epoxy coating that may be used directly over approved primed substrates or as a gloss seal coat over a decorative slurry and mortar system. It's hard wearing and highly chemical resistant.
FEATURES:	<ul style="list-style-type: none"> • Impact and abrasion resistant • Chemical resistant • Available with antimicrobial agent • Tint bases available
BENEFITS:	<ul style="list-style-type: none"> • Durable, easy to clean – sanitary coating (with added antimicrobial agent) • Long-lasting, aesthetically pleasing • Less maintenance
RESUFLO AQUA TOPCOAT GENERAL SERVICE SYSTEM	Resuflo Aqua Topcoat is a 2-3 coat flooring system using a revolutionary water-based resin technology. It is installed quickly, environmentally friendly and is resistant to problems associated with moisture from the concrete.
FEATURES:	<ul style="list-style-type: none"> • No testing for moisture necessary • All systems breathe • Rapid installation • Seamless and sanitary • Good chemical resistance • Can be applied to green concrete • 100 times the permeability of standard epoxy floor systems
BENEFITS:	<ul style="list-style-type: none"> • Long-lasting and durable • Fewer repairs and longer expected service life with proper maintenance
FASTOPTM TOPCOAT QT	FasTop Topcoat QT is a urethane cement texture coating designed to provide anti-slip properties to the FasTop family of floor systems.
FEATURES:	<ul style="list-style-type: none"> • Eliminates an aggregate broadcast • Highly cleanable texture, far easier to clean than a full aggregate broadcast • Urethane cement performance against thermal shock, chemical attack and abrasion resistance • Texture can be varied in size and quantity to fit individual requirements and can be done in multiple colors for a decorative look
BENEFITS:	<ul style="list-style-type: none"> • Less money spent on applying and cleaning up sand broadcast, lower labor costs • Strong, durable flooring solution, less maintenance • Cleanable anti-skid texture, fewer slips and fall hazards
RESUFLO TOPCOAT SL23 SLURRY SYSTEM	Resuflo Topfloor SL23 is a high build (1/16" - 1/8"), chemical resistant protective self-leveling system which utilizes high solids binder resins and selected aggregates to produce a resin rich material that provides a hard wearing, durable flooring system.
FEATURES:	<ul style="list-style-type: none"> • Seamless easy to clean surface • Durable, wear and slip resistant • Chemical and stain resistant • Formulation available with a preservative to inhibit the growth of mildew on the coating surface
BENEFITS:	<ul style="list-style-type: none"> • Fewer areas for bacteria growth with seamless finish • Long-lasting and durable, less maintenance
RESUFLO SCREED TG46	Resuflo Screed TG46 protects substrates from conditions of heavy impact and wear along with resistance to many chemicals, acids and alkalies. It is a 1/8" - 1/4" high build resurfacing system utilizing an epoxy and silica aggregate mortar.
FEATURES:	<ul style="list-style-type: none"> • Protection from thermal shock, heavy impact and wear • Resists degradation from many chemicals, acids and alkalies • Wide range of colors available • Varied skid resistance • Formulation available with a preservative to inhibit the growth of mildew on the coating surface
BENEFITS:	<ul style="list-style-type: none"> • Long-lasting durability, less maintenance

WALLS

PRO INDUSTRIALTM WATERBASED CATALYZED EPOXY	Pro Industrial Waterbased Catalyzed Epoxy provides excellent corrosion resistance, abrasion resistance and chemical resistance and is ideal for areas requiring a durable sanitary coating that can be easily cleaned. It is an interior/exterior two-component, polyamine epoxy topcoat.
FEATURES:	<ul style="list-style-type: none"> • Early moisture resistance, fast drying • Chemical, impact, and abrasion resistant • Outstanding application properties • Resists yellowing
BENEFITS:	<ul style="list-style-type: none"> • Fast dry allows for quick return to service • Long-lasting and durable, less maintenance • User friendly application allows for quick installation • Long-lasting color, fewer repaints
RESUWALLTM AQUA WALL SYSTEM	Resuwall Aqua is a high-performance water-based epoxy for areas subjected to routine and aggressive wash down and sanitation practices. Resuwall Aqua is a multilayer, high build wall and ceiling surfacing system utilizing an epoxy basecoat and topcoat for durability. The system is available with two coats providing unique crack bridging and impact resistance. It can be used on CMU and poured concrete.
FEATURES:	<ul style="list-style-type: none"> • Very good chemical resistance and abrasion resistance • Excellent resistance to moisture and thermal shock • Smooth and durable with excellent adhesion to concrete • Highly washable surface that will inhibit growth of fungus or bacteria per test specified TT-P-34
BENEFITS:	<ul style="list-style-type: none"> • Can be applied over a slightly damp surface • Unlimited S-W color selection • Long-lasting and durable – product will not lose bond due to thermal shock • Professional looking wall coating that inhibits the growth of fungus or bacteria
RESUWALL AQUA FR WALL SYSTEM	Resuwall Aqua FR is a fiber reinforced epoxy resin system designed for application to walls and ceilings in demanding environments such as food processing facilities. This unique resin combines the toughness expected from a fiber reinforced epoxy with the ease of application using a brush, roller or spray. Resuwall Aqua FR provides excellent performance properties including light (UV) resistance not typical of epoxy based systems. It can be used on drywall for enhanced reinforcement and durability.
FEATURES:	<ul style="list-style-type: none"> • Very good impact and abrasion resistance that resists cracking • Very good chemical resistance and is well suited for wash down areas • Good color stability • Provides a smooth tight surface with a light stipple texture
BENEFITS:	<ul style="list-style-type: none"> • Long-lasting durability, less maintenance • Aesthetically pleasing with good color stability
RESUWALL FX WALL SYSTEM	Resuwall FX is a multi-layer, high build wall surfacing system utilizing two coats of a flexible epoxy membrane as a base and a high solids urethane enamel topcoat for chemical resistance, color and gloss retention. This unique system offers a competitive advantage over reinforced rigid epoxy systems while providing superior crack bridging and impact resistance.
FEATURES:	<ul style="list-style-type: none"> • Crack bridging and impact resistant • UV resistant and color stable • Thermal shock resistant • Outstanding application properties
BENEFITS:	<ul style="list-style-type: none"> • Can be applied over a damp surface allowing for quick return to service • Unlimited S-W color selection allows for aesthetically pleasing coating • Outstanding application properties allow for easy installation • Long-lasting durability, less maintenance

MODERATE: Suitable for occasional moisture and chemical exposure with semi-frequent wash downs

HEAVY: Suitable for constant moisture, chemical, thermal shock exposure with more frequent wash downs

EXTREME: Highest level of performance with regard to moisture, chemical, thermal shock exposure with high wash down frequency

WALLS (CONTINUED)

SHER LOXANE 800	Sherwin-Williams Sher-Loxane 800 is an advanced polysiloxane coating that helps you reduce total operational costs with corrosion protection for a wide range of applications.
FEATURES:	<ul style="list-style-type: none"> Fast cure part B available for accelerated applications Spray, brush or roller application without thinning Compatible with multiple substrates found in food & beverage facilities One- or two-coat system
BENEFITS:	<ul style="list-style-type: none"> Boosts cleanability from low surface tension Protects assets with excellent corrosion and chemical resistance Quick return to service Extends maintenance intervals through long-term durability

COVE BASE

EPOXY COVE BASE	Epoxy Cove Base is designed as an integral part of the flooring system to provide a seamless transition from the flooring system to the wall system. The vertical portion can be installed to any height at 1/16" to 1/4" thickness.
FEATURES:	<ul style="list-style-type: none"> Provides a seamless transition between floor and wall
BENEFITS:	<ul style="list-style-type: none"> Fewer areas for bacteria growth with seamless transition from wall to floor
FASTOP™ COVE BASE	FasTop Cove Base is a urethane concrete system designed as an integral part of the flooring system to provide a seamless transition from the flooring system to the wall system. The vertical portion can be installed to any height at 1/16" to 1/4" thickness.
FEATURES:	<ul style="list-style-type: none"> Waterborne coating, moisture insensitive, can be applied to green concrete Hot cooking oil and steam resistant Low temperature cure Impact and thermal shock resistant
BENEFITS:	<ul style="list-style-type: none"> Fewer areas for bacteria growth with seamless wall to floor transition Durable coating in diverse environments Quick turnaround time in low temperature areas such as cold storage/warehousing Long-lasting durability, less maintenance

Cove base is installed to provide a seamless transition from the horizontal plane of a floor slab to the vertical plane of a wall system. Integrated cove base provides a seamless, hygienic transition that facilitates cleaning and sanitation operations. All Systems are acceptable for use in USDA inspected facilities.

LINE STRIPING

ARMORSEAL® 8100 (SAFETY RED AND SAFETY YELLOW)	Waterbased epoxy perfect for line striping or as a floor coating. This two-component epoxy has excellent chemical resistance and abrasion resistance while being a breathable system. This makes it perfect for damp/humid environments within food and beverage facilities.
FEATURES:	<ul style="list-style-type: none"> Low odor, breathable, 5-hour pot life Apply direct to concrete/damp concrete surfaces
BENEFITS:	<ul style="list-style-type: none"> Resists disbandment from moisture vapor – fewer repairs Easy to apply – less labor time No primer required, tolerant of moisture – faster return to service times
MACROPOXY® 646	Macropoxy 646 is our workhorse epoxy and is ideal for processing areas that are exposed to harsh conditions for steel surfaces or line striping.
FEATURES:	<ul style="list-style-type: none"> Outstanding application properties Chemical resistant Abrasion resistant
BENEFITS:	<ul style="list-style-type: none"> High solids content ensures adequate protection of sharp edges, corners, and welds Durable and long-lasting, less maintenance

DOORS, HANDRAILS, PIPING AND MISC. STEEL

PRO INDUSTRIAL™ URETHANE ALKYD	Pro Industrial Urethane Alkyd is an abrasion resistant, high gloss urethane modified alkyd coating. It provides a durable, chip resistant hard film ideal for steel handrails, doors and piping.
FEATURES:	<ul style="list-style-type: none"> Abrasion resistant Chip resistant
BENEFITS:	<ul style="list-style-type: none"> Very durable hard film, less maintenance

CEILING (PRODUCTS WILL VARY PENDING SUBSTRATE)

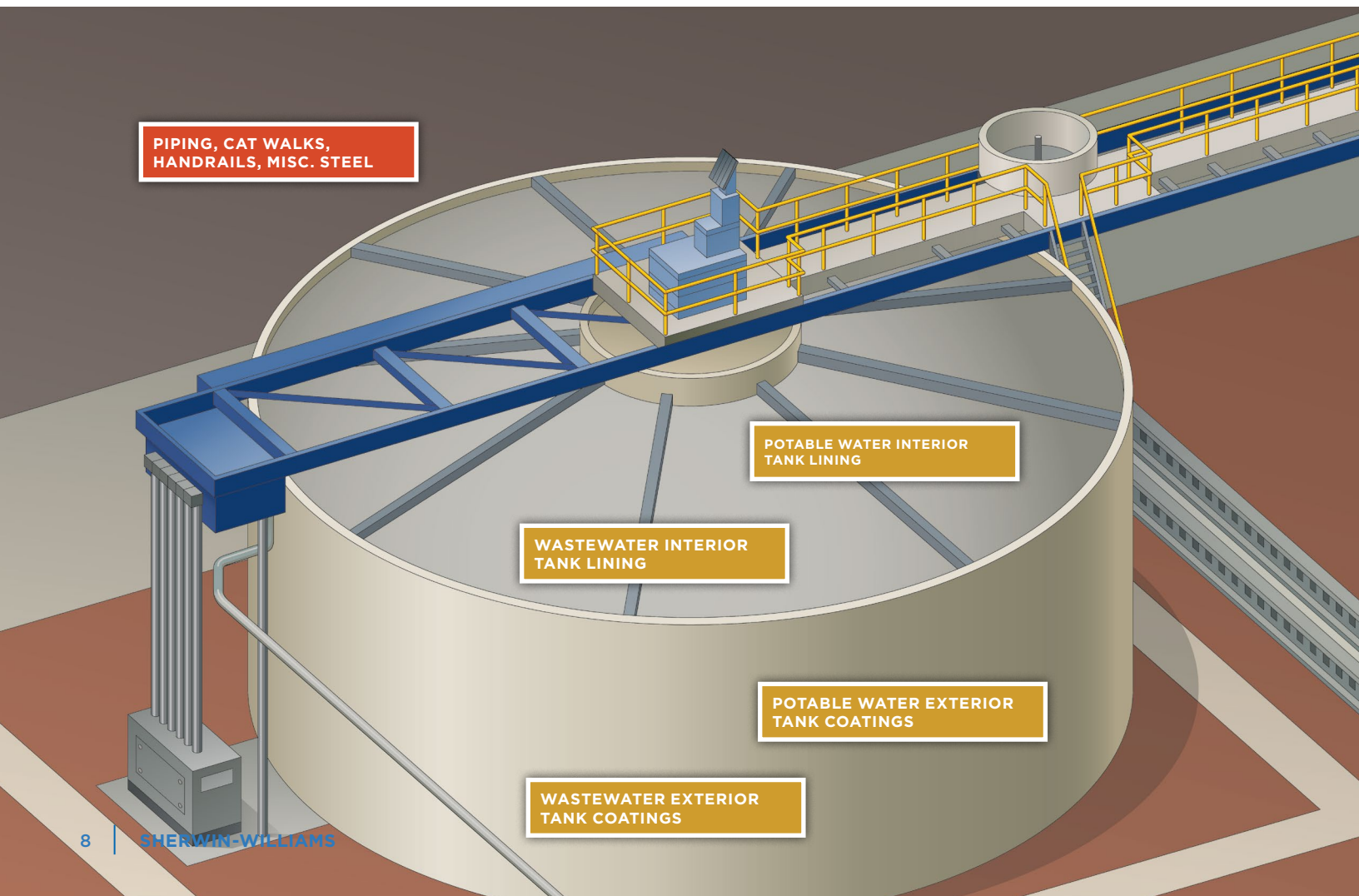
WATERBORNE ACRYLIC DRYFALL	Waterborne Acrylic Dryfall is a waterbased, high light-reflective ceiling coating that falls dry in ten feet. Fallout can be swept up for easy cleanup of work area.
FEATURES:	<ul style="list-style-type: none"> TTVT

PATCHING

RESUTILE™ 4700 INSTANT PATCH	Resutile 4700 is a two-component, multi-purpose urethane concrete repair material. Material is mixed and cured at room temperature for patching holes, cracks, depressions and other surface imperfections on a variety of substrates. Resutile 4700 sets within 2 minutes and the repaired area can be placed in service or recoated within 30 minutes at normal (approx. 70°F/21°C) room temperatures. In cold temperatures, larger batches can be mixed and applied as a floor finish.
FEATURES:	<ul style="list-style-type: none"> Extremely fast cure – sets within 2 minutes Easy to mix, 1:1 pourable components or 22 ounce double barrel cartridges Cold temperature application at 0°F - 90°F (-18°C - 32°C) Non-shrinking, traffic bearing hardness
BENEFITS:	<ul style="list-style-type: none"> Immediate return to service or serves as a solid repair material when recoating the floor Quick turnaround time in low temperature areas such as cold storage/warehousing Long-lasting durability, less maintenance User friendly application allows for quick installation
RESUFLO® 3500 QUICK PATCH	Resuflo 3500 is a two-component, multi-purpose, fast cure epoxy repair material. When mixed, the components thicken to provide an easy-to-apply paste for patching holes, cracks, depressions and other surface imperfections on a variety of substrates. The rapid curing material will provide a new flush surface ready for use or addition of protective coatings in 1-2 hours.
FEATURES:	<ul style="list-style-type: none"> Easy to mix, 1:1 ratio Non-shrinking and non-sagging, can be sanded as spackling compound Moisture tolerant
BENEFITS:	<ul style="list-style-type: none"> Quick turnaround time Durable coating in diverse environments
ARMORSEAL® EXPRESSPATCH®	ArmorSeal ExpressPatch is a 100% solids, waterbased urethane slurry mortar floor patch kit. It is designed to repair and protect concrete and masonry substrates from thermal shock, impact, corrosion, mild chemical attack and abrasion. It is to be applied at 3/16" minimum thickness (smooth) and broadcast to yield a 1/4" finished system (textured).
FEATURES:	<ul style="list-style-type: none"> Inhibits microbial growth Low temperature application at 45°F - 80°F (7°C - 27°C) with very fast cure time Service temperatures from -50°F - 225°F (-45°C - 107°C) Can be applied to damp concrete
BENEFITS:	<ul style="list-style-type: none"> Quick turnaround time in low temperature areas such as cold storage/warehousing Fast return to service – 6 hours Alternate applications – pea gravel can be added to produce a 6 inch mortar patching material

WATER AND WASTEWATER TREATMENT AREAS COATINGS SOLUTIONS

Sherwin-Williams understands the complex challenges faced in water and wastewater treatment areas of food and beverage facilities and that these challenges can cause major setbacks. Whether your project involves potable water storage, treatment facilities maintenance, secondary containment or sewer infrastructure linings and rehabilitation, Sherwin-Williams has the coating and lining systems to prevent service interruptions, extend maintenance budgets and preserve water quality.



POTABLE WATER INTERIOR TANK LINING

SHERPLATE® 600	SherPlate 600 Potable Water Epoxy is a next generation, high solids, epoxy phenalkamide lining that meets both the health effects and testing requirements of NSF/ANSI/CAN 61 criteria for xylenes, toluene and ethylbenzene.
FEATURES:	<ul style="list-style-type: none"> • Conforms with AWWA D102-21 and NSF/ANSI/CAN 61-600 • One-hour pot life at 77°F to allow conventional airless spray application • Available in white, light blue, red or buff
BENEFITS:	<ul style="list-style-type: none"> • Fast drying allows for quick return to service • High solids content ensures adequate edge protection on welds, angles and bolts

WASTEWATER INTERIOR TANK LINING

VARIOUS WASTEWATER LININGS MATCHED TO YOUR SPECIFIC NEEDS	Due to the broad nature of process waste, we recommend you consult with a Sherwin-Williams professional to evaluate the waste stream and develop a specification based upon your unique needs.
--	--

POTABLE WATER AND WASTEWATER EXTERIOR TANK COATINGS

VARIOUS POTABLE WATER AND WASTE WATER COATINGS MATCHED TO YOUR SPECIFIC NEEDS	Due to the broad nature of process waste, we recommend you consult with a Sherwin-Williams professional to evaluate the waste stream and develop a specification based upon your unique needs.
--	--

PIPING, CAT WALKS, HANDRAILS AND MISC. STEEL

PRO INDUSTRIAL™ URETHANE ALKYD	Pro Industrial Urethane Alkyd is an abrasion resistant, high gloss urethane modified alkyd coating. It provides a durable, chip resistant hard film ideal for steel handrails, doors and piping.
FEATURES:	<ul style="list-style-type: none"> • Abrasion resistant • Chip resistant
BENEFITS:	<ul style="list-style-type: none"> • Very durable hard film, less maintenance
SHER-LOXANE® 800	Sherwin-Williams Sher-Loxane 800 is an advanced polysiloxane coating that helps you reduce total operational costs with corrosion protection for a wide range of applications.
FEATURES:	<ul style="list-style-type: none"> • Fast cure part B available for accelerated applications • Spray, brush or roller application without thinning • Compatible with multiple substrates found in food & beverage facilities • One- or two-coat system
BENEFITS:	<ul style="list-style-type: none"> • Boosts cleanability from low surface tension • Protects assets with excellent corrosion and chemical resistance • Quick return to service • Extends maintenance intervals through long-term durability

All Systems are acceptable for use in USDA inspected facilities.

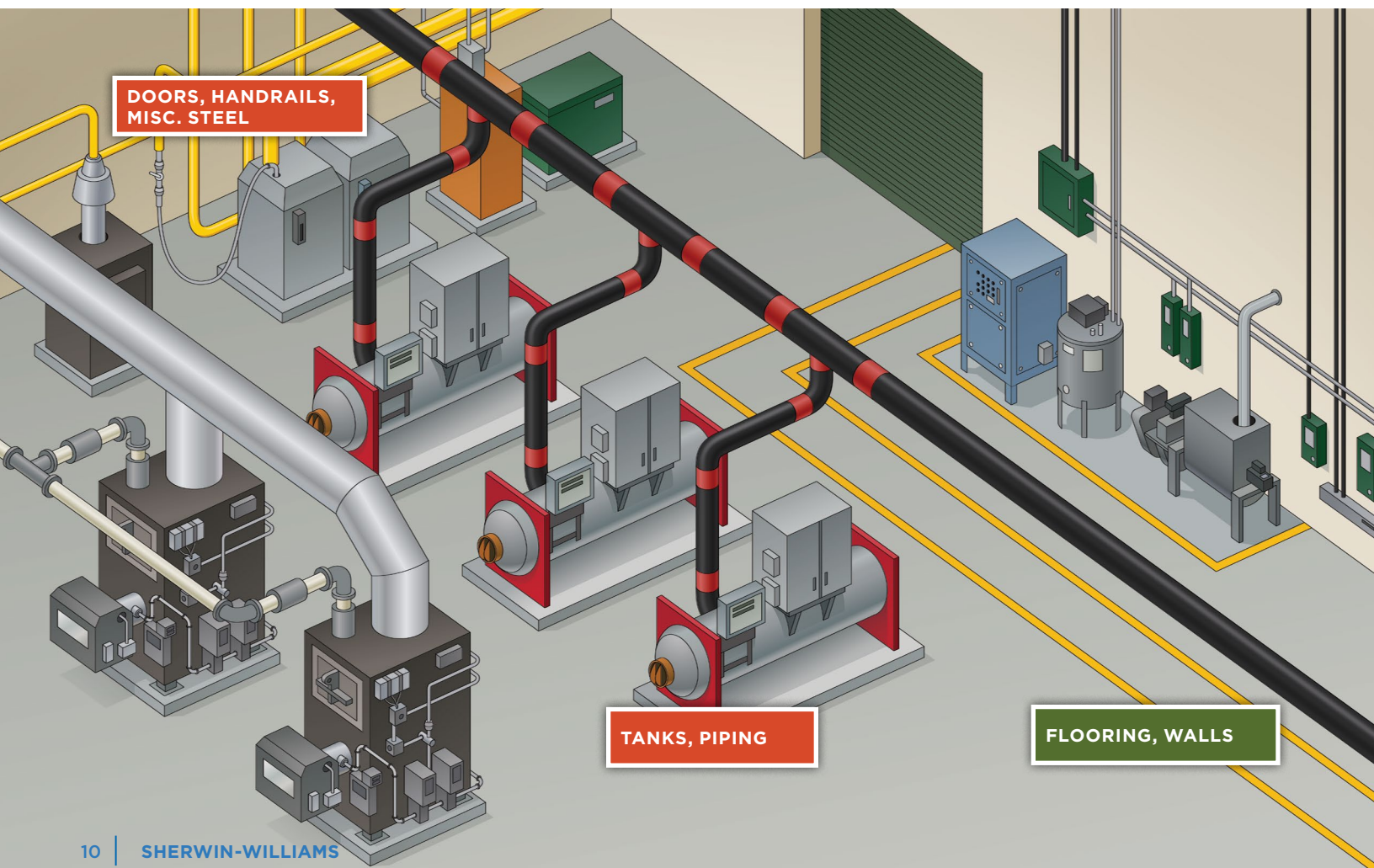
Please consult your Sherwin-Williams professional to conduct a facility assessment on all your Water/Wastewater needs to properly recommend the right systems for your facility.



MECHANICAL EQUIPMENT ROOM AREA COATINGS SOLUTIONS

Our ability to be agile in solving problems associated with fast turnaround time to comply with audit prep/repairs and project needs will help you create a proactive approach to maintenance.

Mechanical equipment and boiler rooms experience heavy traffic from personnel, hand carts, forklifts and other machinery. In addition, elevated mechanical equipment rooms often require elastomeric waterproof systems to help with vibration and spillages. Sherwin-Williams offers durable, slip resistant solutions that can be applied across floors and bases, curbs, equipment pads and pipe sleeves. Whether your mechanical equipment room or boiler room is hot or cold, Sherwin-Williams has all of your coatings needs covered.



FLOORING	
FASTOP™ MULTI TOPCOAT T100 URETHANE CONCRETE SYSTEM	FasTop Multi Topcoat T100 is a high-performance urethane concrete system that can be installed as a topcoat or as a single broadcast floor system. FasTop™ Multi Topcoat T100 incorporates a broadcast of aggregate into the first coat followed by a seal coat. It exhibits good chemical and temperature resistance and can be used in conjunction with Fastop Multi Systems as a urethane concrete topcoat.
FEATURES:	<ul style="list-style-type: none"> Chemical, impact and abrasion resistant Rapid cure and hardness development May be applied direct to repaired concrete, low temperature cure at 40°F (4°C) Water-based, moisture insensitive
BENEFITS:	<ul style="list-style-type: none"> Seamless, cleanable surface Durable and slip resistant Chemical and stain resistant Acceptable for use in USDA inspected facilities
RESUFLO™ TOPFLOOR MER II MECHANICAL EQUIPMENT ROOM SYSTEM	Resufloor Topfloor MER II combines Resufloor Topfloor MER crack bridging and waterproofing capabilities with a chemically resistant topcoat and an optional Resufloor Topfloor MER broadcast to excess with hard aggregate to provide increased wear, impact, and abrasion resistance. Resufloor Topfloor MER II achieves flexibility without the use of plasticizers or other additives which can separate or migrate as the system ages. The product remains flexible and continues to function for many years. Fiberglass scrim may be incorporated into the system to add tensile strength.
FEATURES:	<ul style="list-style-type: none"> Bridges hairline cracks, thereby aiding in suppression of cracks reflecting through the system due to substrate movement Durable, slip resistant Waterproof Chemical and stain resistant
BENEFITS:	<ul style="list-style-type: none"> Acts as a barrier coat to help reduce intrusion of water/moisture into lower level spaces Increased texture reduces opportunity for slips and falls

WALLS	
PROMAR™ 200 ZERO VOC	ProMar 200 Zero VOC is our premium commercial grade water-based interior coating for walls. It provides a durable finish with resistance to abrasion and moderate cleaning.
FEATURES:	<ul style="list-style-type: none"> 100% acrylic formula for good quality and value, mildew resistant Proven performer with good hide, adhesion and color retention Efficient coverage and great for routine color changes Low temperature application down to 35°F (2°C)
BENEFITS:	<ul style="list-style-type: none"> Quick turnaround time in low temperature areas such as cold storage/warehousing Efficient coverage reduces coats and installation time Long-lasting aesthetically pleasing Coating contains agents which inhibit the growth of mildew on the surface of this coating film
PRO INDUSTRIAL™ ACRYLIC COATING	Pro Industrial Acrylic Coating is our finest water-based acrylic topcoat with excellent durability and abrasion resistance. It can withstand frequent cleanings and has very good resistance to chemicals and cleaning agents.
FEATURES:	<ul style="list-style-type: none"> Outstanding exterior durability Flash rust/early rust resistant Early moisture resistant Excellent application properties (high gloss, fast dry, water clean up)
BENEFITS:	<ul style="list-style-type: none"> Fast return to service User friendly application leads to reduced installation time Long-lasting aesthetically pleasing coating
PRO INDUSTRIAL WATERBASED CATALYZED EPOXY	Pro Industrial Waterbased Catalyzed Epoxy provides excellent corrosion resistance, abrasion resistance and chemical resistance and is ideal for areas requiring a durable sanitary coating that can be easily cleaned. It is an interior/exterior two-component, polyamine epoxy topcoat.
FEATURES:	<ul style="list-style-type: none"> Early moisture resistance, fast drying Chemical, impact, and abrasion resistant Outstanding application properties Resists yellowing
BENEFITS:	<ul style="list-style-type: none"> Fast dry allows for quick return to service Long-lasting and durable, less maintenance User friendly application allows for quick installation Long-lasting color, fewer repaints

- MODERATE:** Suitable for occasional moisture and chemical exposure with semi-frequent wash downs
- HEAVY:** Suitable for constant moisture, chemical, thermal shock exposure with more frequent wash downs
- EXTREME:** Highest level of performance with regard to moisture, chemical, thermal shock exposure with high wash down frequency

DOORS, HANDRAILS, PIPING AND MISC. STEEL	
PRO INDUSTRIAL URETHANE ALKYD	Pro Industrial Urethane Alkyd is an abrasion resistant, high gloss urethane modified alkyd coating. It provides a durable, chip resistant hard film ideal for steel handrails, doors and piping.
FEATURES:	<ul style="list-style-type: none"> Abrasion resistant Chip resistant
BENEFITS:	<ul style="list-style-type: none"> Very durable hard film, less maintenance

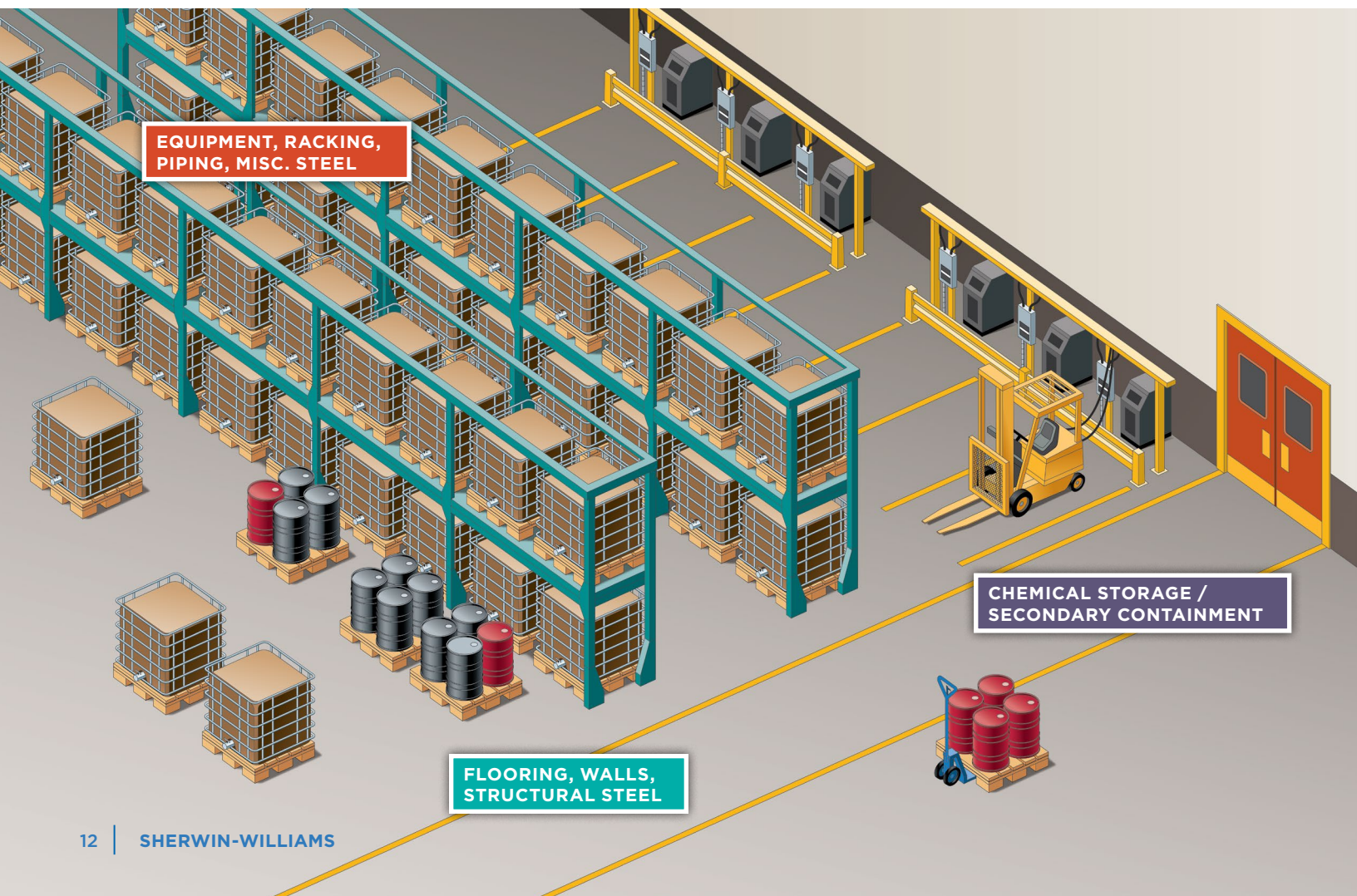
EXTERIOR TANKS OR PIPING	
SHER-LOXANE® 800	Sherwin-Williams Sher-Loxane 800 is an advanced polysiloxane coating that helps you reduce total operational costs with corrosion protection for a wide range of applications.
FEATURES:	<ul style="list-style-type: none"> Fast cure part B available for accelerated applications Spray, brush or roller application without thinning Compatible with multiple substrates found in food & beverage facilities One- or two-coat system
BENEFITS:	<ul style="list-style-type: none"> Boost cleanability from low surface tension Protect assets with excellent corrosion and chemical resistance Quick return to service Extend maintenance intervals through long-term durability
HEAT-FLEX® 3500	Multi-purpose, single component waterbased, acrylic, spray applied insulative coating. It contains an engineered composite of ceramic and silica microspheres to optimize thermal insulative properties. Note: Other Heat-Flex High Temp coating options available.
FEATURES:	<ul style="list-style-type: none"> Designed to be applied to hot substrates up to 350°F (177°C) Suitable to insulate substrates operating from -80°F up to 350°F (-62°C - 177°C) Easy airless spray application Very fast dry with minimal overspray risk Low odor, low VOC
BENEFITS:	<ul style="list-style-type: none"> Personnel protective coating for improved plant safety through burn prevention Thermal insulation for hot or cold process energy conservation Prevents condensation on cold surfaces
ADDITIONAL TANK AND PIPING COATINGS MATCHED TO YOUR SPECIFIC NEEDS	Whether you need aesthetically pleasing or chemical resistant tank or piping coatings, we have various coatings that meet your specific needs. Consult with a Sherwin-Williams professional to evaluate your specific tank or piping needs and develop a specification tailored to your facility.

LINE STRIPING	
ARMORSEAL® 8100 (SAFETY RED AND SAFETY YELLOW)	Waterbased epoxy perfect for line striping or as a floor coating. This two-component epoxy has excellent chemical resistance and abrasion resistance while being a breathable system. This makes it perfect for damp/humid environments within food and beverage facilities.
FEATURES:	<ul style="list-style-type: none"> Low odor, breathable, 5-hour pot life Apply direct to concrete/damp concrete surfaces
BENEFITS:	<ul style="list-style-type: none"> Resists disbandment from moisture vapor – fewer repairs Easy-to-apply – less labor time No primer required, tolerant of moisture – faster return to service times
MACROPOXY® 646	Macropoxy 646 is our workhorse epoxy and is ideal for processing areas that are exposed to harsh conditions for steel surfaces or line striping.
FEATURES:	<ul style="list-style-type: none"> Outstanding application properties Chemical resistant Abrasion resistant
BENEFITS:	<ul style="list-style-type: none"> High solids content ensures adequate protection of sharp edges, corners, and welds Durable and long-lasting, less maintenance

All Systems are acceptable for use in USDA inspected facilities.

BATTERY CHARGING AND CHEMICAL STORAGE AREAS

COATINGS SOLUTIONS



BATTERY ACID RESISTANT FLOORING

FASTOP™ TOPFLOOR SL13 SELF-LEVELING URETHANE SLURRY SYSTEM

Self-leveling slurry system designed for light to moderate traffic and abuse. Protects concrete and steel substrates from thermal shock impact and abrasion resistance.

FEATURES:

- Moisture insensitive, can be applied to green concrete
- 8-hour cure and hardness to service development; low temperature cure to 35°F (2°C)
- Protection from thermal shock, impact and wear up to 220°F (104°C) direct steam
- Moderate chemical resistance

BENEFITS:

- Minimal downtime, quick turnaround
- Waterborne coating that allows moisture vapor transmission to take place
- Thermal shock resistant, less maintenance
- Long-lasting durability, fewer recoats over time

FASTOP TOPFLOOR SL45 URETHANE SLURRY SYSTEM

FasTop Topfloor SL45 Urethane Slurry System is designed to protect concrete and steel substrates from thermal shock, impact, corrosion, mild chemical attack and abrasion. It is a waterborne urethane cementitious system to be applied at 3/16" thickness and broadcast to yield a 1/4" - 3/8" finished system. A decorative quartz broadcast may be specified as an upgrade to the standard system.

FEATURES:

- Moisture insensitive, can be applied to green concrete or slightly damp substrates
- Rapid cure and hardness development
- Excellent physical and chemical properties
- Hot water or direct steam resistances up to 220°F (104°C) with very good chemical resistance

BENEFITS:

- 6-8 hour minimal downtime, quick turnaround
- Waterborne coating that allows moisture vapor transmission to take place
- Thermal shock resistant
- Long-lasting durability, less maintenance with tough impact resistant properties

WALLS

PRO INDUSTRIAL™ ACRYLIC COATING

Pro Industrial Acrylic Coating is our finest water-based acrylic topcoat with excellent durability and abrasion resistance. It can withstand frequent cleanings and has very good resistance to chemicals and cleaning agents.

FEATURES:

- Outstanding exterior durability
- Flash rust/early rust resistant
- Early moisture resistant
- Excellent application properties (high gloss, fast dry, water clean up)

BENEFITS:

- Fast return to service
- User friendly application leads to reduced installation time
- Long-lasting aesthetically pleasing coating

PRO INDUSTRIAL WATERBASED CATALYZED EPOXY

Pro Industrial Waterbased Catalyzed Epoxy provides excellent corrosion resistance, abrasion resistance and chemical resistance and is ideal for areas requiring a durable sanitary coating that can be easily cleaned. It is an interior/exterior two-component, polyamine epoxy topcoat.

FEATURES:

- Early moisture resistance, fast drying
- Chemical, impact, and abrasion resistant
- Outstanding application properties
- Resists yellowing

BENEFITS:

- Fast dry allows for quick return to service
- Long-lasting and durable, less maintenance
- User friendly application allows for quick installation
- Long-lasting color, fewer repaints

SANIFIBER™ WALL SYSTEM

Sanifiber Wall System is a fiber reinforced epoxy resin system designed for application to walls and ceilings in demanding environments such as food processing facilities. This unique resin combines the toughness expected from a fiber reinforced epoxy with the ease of application using a brush, roller or spray. The Sanifiber Wall System provides excellent performance properties including light (UV) resistance not typical of epoxy based systems. It can be used on drywall for enhanced reinforcement and durability.

FEATURES:

- Very good impact and abrasion resistance that resists cracking
- Very good chemical resistance and is well suited for wash down areas
- Good color stability
- Provides a smooth tight surface with a light stipple texture

BENEFITS:

- Long-lasting durability, less maintenance
- Aesthetically pleasing with good color stability

CHEMICAL STORAGE / SECONDARY CONTAINMENT

VARIOUS CHEMICAL RESISTANT & SECONDARY CONTAINMENT LININGS MATCHED TO YOUR SPECIFIC NEEDS

Due to the broad nature of process chemicals, we recommend you consult with a Sherwin-Williams professional to evaluate the specific storage/containment materials and develop a specification based upon your unique needs.

DOORS, HANDRAILS, RACKING, PIPING AND MISC. STEEL

PRO INDUSTRIAL URETHANE ALKYD

Pro Industrial Urethane Alkyd is an abrasion resistant, high gloss urethane modified alkyd coating. It provides a durable, chip resistant hard film ideal for steel handrails, doors and piping.

FEATURES:

- Abrasion resistant
- Chip resistant

BENEFITS:

- Protection of sharp edges, corners and welds

LINE STRIPING

ARMORSEAL® 8100 (SAFETY RED AND SAFETY YELLOW)

Waterbased epoxy perfect for line striping or as a floor coating. This two-component epoxy has excellent chemical resistance and abrasion resistance while being a breathable system. This makes it perfect for damp/humid environments within food and beverage facilities.

FEATURES:

- Low odor, breathable, 5-hour pot life
- Apply direct to concrete/damp concrete surfaces

BENEFITS:

- Resists disbandment from moisture vapor – fewer repairs
- Easy-to-apply – less labor time
- No primer required, tolerant of moisture – faster return to service times

MACROPOXY® 646

Macropoxy 646 is our workhorse epoxy and is ideal for processing areas that are exposed to harsh conditions for steel surfaces or line striping.

FEATURES:

- Outstanding application properties
- Chemical resistant
- Abrasion resistant

BENEFITS:

- The high solids content ensures adequate protection of sharp edges, corners and welds
- Durable and long-lasting, less maintenance

Always confirm the potential exposures while reviewing coating systems options with your Sherwin-Williams professional.

MODERATE: Suitable for occasional moisture and chemical exposure with semi-frequent wash downs

HEAVY: Suitable for constant moisture, chemical, thermal shock exposure with more frequent wash downs

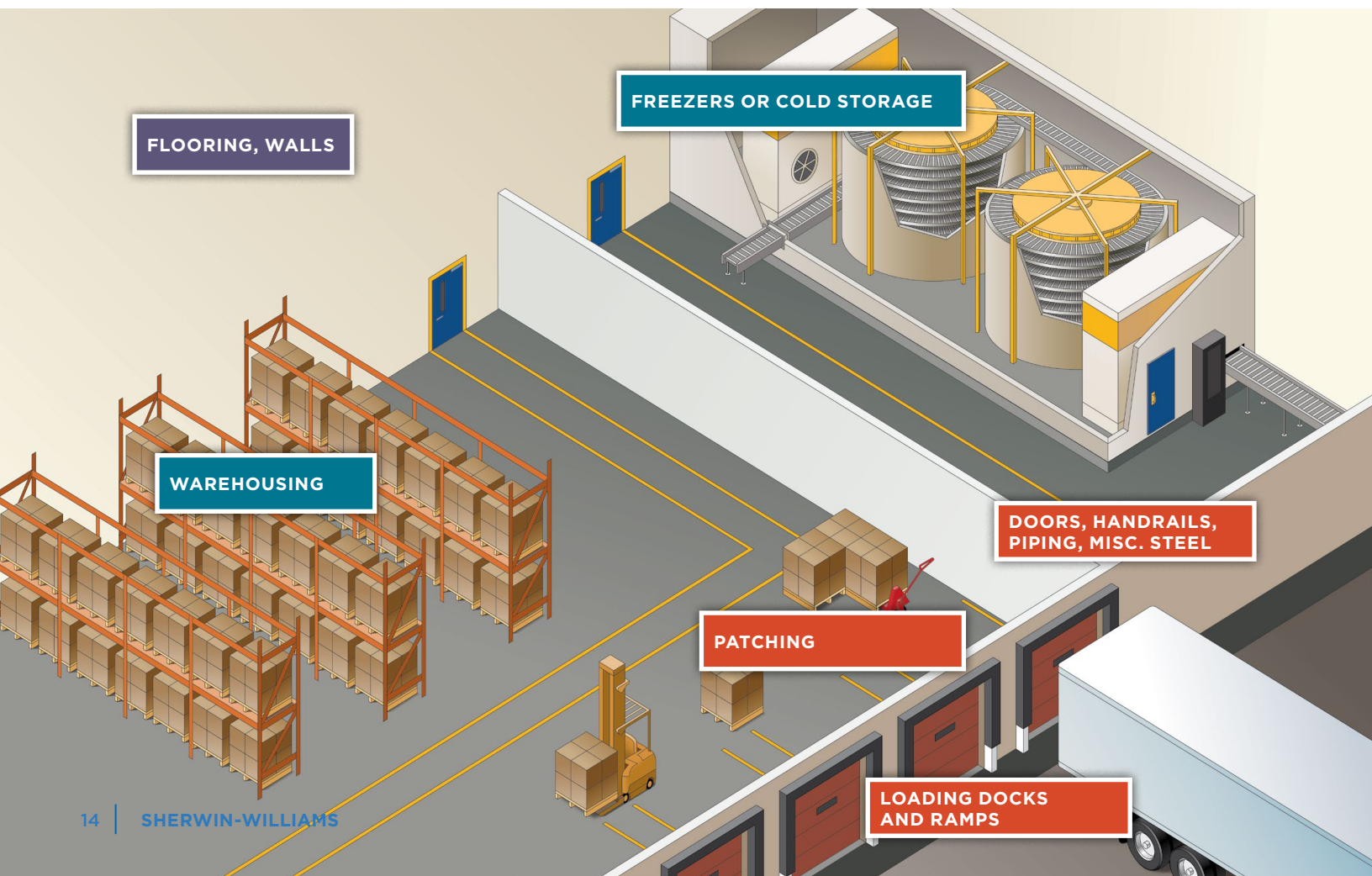
EXTREME: Highest level of performance with regard to moisture, chemical, thermal shock exposure with high wash down frequency

STORAGE AND WAREHOUSING AREAS COATINGS SOLUTIONS

With proper planning, we can increase your speed to react and comply with food safety practices and regulations.

Cold storage, freezers and warehousing areas are unlike any other environment in your facility. From heavy-machine traffic to severe condensation, these areas face unique challenges and require high-performance coatings. Areas for raw material storage such as storage silos also require the highest level of FDA approved coatings.

Sherwin-Williams is dedicated to helping you find the right solutions for these tough environments while helping you establish a proactive maintenance program addressing common concerns. From impact resistant wall coatings to moisture resistant flooring patch kits and everything in between, Sherwin-Williams provides the innovative interior and exterior storage and warehousing coatings solutions that your facility needs.



FLOORING

RESUFLOTM 3746	Resuflo 3746 is a two-component, recoatable epoxy and binder resin. It may be used directly over primed substrates, or as a gloss seal coat over decorative slurry and mortar systems. It is extremely hard wearing, chemical, impact and abrasion resistant. This coating should be used in areas where maintenance of a high performance, aesthetically appealing and chemical resistant epoxy system is required. Resuflo 3746 is suited for use in clean rooms, laboratories, workshops, warehousing and light assembly areas.
FEATURES:	<ul style="list-style-type: none"> • Impact and abrasion resistant • Durable, easy to clean • Chemical resistant • Acceptable for use in Canadian Food Processing facilities, categories: D2 (confirm acceptance of specific part numbers/ rexes with your S-W Sales Representative) • Formulation available with a preservative to inhibit the growth of mildew on the coating surface • Tint bases can be tinted using Maxitoner[®] at 50% tint strength
BENEFITS:	<ul style="list-style-type: none"> • Durable epoxy coating, less maintenance • Inhibits bacteria growth when used with antimicrobial agent
RESUFLO SCREED TG46 TROWELED MORTAR SYSTEM	Resuflo Screed TG46 Standard Troweled Mortar System protects substrates from conditions of heavy impact and wear along with resistance to many chemicals, acids and alkalies. It is a 1/8" - 1/4" high build resurfacing system utilizing an epoxy and silica aggregate mortar.
FEATURES:	<ul style="list-style-type: none"> • Protection from thermal shock, heavy impact and wear • Resists degradation from many chemicals, acids and alkalies • Wide range of colors available • Varied skid resistance • Formulation available with a preservative to inhibit the growth of mildew on the coating surface
BENEFITS:	<ul style="list-style-type: none"> • Long-lasting durability, less maintenance
FASTOPTM TOPFLOOR SL13 SELF-LEVELING URETHANE SLURRY SYSTEM	Self-leveling slurry system designed for light to moderate traffic and abuse. Protects concrete and steel substrates from thermal shock impact and abrasion resistance.
FEATURES:	<ul style="list-style-type: none"> • Moisture insensitive, can be applied to green concrete • 8-hour cure and hardness to service development; low temperature cure to 35°F (2°C) • Protection from thermal shock, impact and wear up to 220°F (104°C) direct steam • Moderate chemical resistance
BENEFITS:	<ul style="list-style-type: none"> • Minimal downtime, quick turnaround • Waterborne coating that allows moisture vapor transmission to take place • Thermal shock resistant, less maintenance • Long-lasting durability, fewer recoats over time
FASTOP TOPFLOOR SL45 URETHANE SLURRY SYSTEM	FasTop Topfloor and FasTop Topfloor SL45 are designed to protect concrete and steel substrates from thermal shock, impact, corrosion, mild chemical attack and abrasion. They are waterborne urethane cementitious systems to be applied at 3/16" thickness and broadcast to yield a 1/4" - 3/8" finished system. A decorative quartz broadcast may be specified as an upgrade to the standard systems.
FEATURES:	<ul style="list-style-type: none"> • Moisture insensitive, can be applied to green concrete or slightly damp substrates • Rapid cure and hardness development • Excellent physical and chemical properties • Hot water or direct steam resistances up to 220°F (104°C) with very good chemical resistance
BENEFITS:	<ul style="list-style-type: none"> • 6-8 hour minimal downtime, quick turnaround • Waterborne coating that allows moisture vapor transmission to take place • Thermal shock resistant • Long-lasting durability, less maintenance with tough impact resistant properties

WALLS

PROMAR[®] 200 ZERO VOC	ProMar 200 Zero VOC is our premium commercial grade water-based interior coating for walls. It provides a durable finish with resistance to abrasion and moderate cleaning.
FEATURES:	<ul style="list-style-type: none"> • Application and finish of an alkyd coating, good flow and leveling • Non-yellowing • Efficient coverage and great for routine color changes • Excellent touch up properties
BENEFITS:	<ul style="list-style-type: none"> • Efficient coverage reduces coats and installation time • Long-lasting aesthetically pleasing coating
PRO INDUSTRIAL[™] ACRYLIC COATING	Pro Industrial Acrylic Coating is our finest water-based acrylic topcoat with excellent durability and abrasion resistance. It can withstand frequent cleanings and has very good resistance to chemicals and cleaning agents.
FEATURES:	<ul style="list-style-type: none"> • Outstanding exterior durability • Flash rust/early rust resistant • Early moisture resistant • Excellent application properties (high gloss, fast dry, water clean up)
BENEFITS:	<ul style="list-style-type: none"> • Fast return to service • User friendly application leads to reduced installation time • Long-lasting, aesthetically pleasing coating
PRO INDUSTRIAL WATERBASED CATALYZED EPOXY	Pro Industrial Waterbased Catalyzed Epoxy provides excellent corrosion resistance, abrasion resistance and chemical resistance and is ideal for areas requiring a durable sanitary coating that can be easily cleaned. It is an interior/exterior two-component, polyamine epoxy topcoat.
FEATURES:	<ul style="list-style-type: none"> • Early moisture resistance, fast drying • Chemical, impact, and abrasion resistant • Outstanding application properties • Resists yellowing
BENEFITS:	<ul style="list-style-type: none"> • Fast dry allows for quick return to service • Long-lasting and durable, less maintenance • User friendly application allows for quick installation • Long-lasting color, fewer repaints

Blast freezers or extreme temperature quick-chill areas may require special coatings. Please consult your Sherwin-Williams professional to conduct a facility assessment to properly recommend the right systems for your facility.



MODERATE: Suitable for occasional moisture and chemical exposure with semi-frequent wash downs

HEAVY: Suitable for constant moisture, chemical, thermal shock exposure with more frequent wash downs

EXTREME: Highest level of performance with regard to moisture, chemical, thermal shock exposure with high wash down frequency

STORAGE AND WAREHOUSING AREAS COATINGS SOLUTIONS

FLOOR PATCHING

RESUTILE™ 4700 INSTANT PATCH

Resutile 4700 Instant Patch is a two-component, multi-purpose urethane concrete repair material. Material is mixed and cured at room temperature for patching holes, cracks, depressions and other surface imperfections on a variety of substrates. Resutile 4700 Instant Patch sets within 2 minutes and the repaired area can be placed in service or recoated within 30 minutes at normal (approx. 70°F/21°C) room temperatures. In cold temperatures, larger batches can be mixed and applied as a floor finish.

FEATURES:

- Extremely fast cure - sets within 2 minutes
- Easy to mix, 1:1 pourable components or 22 ounce double barrel cartridges
- Cold temperature application at 0°F - 90°F (-18°C - 32°C)
- Non-shrinking, traffic bearing hardness

BENEFITS:

- Immediate return to service or serves as a solid repair material when recoating the floor
- Quick turnaround time in low temperature areas such as cold storage/warehousing
- Long-lasting durability, less maintenance
- User friendly application allows for quick installation

ARMORSEAL® EXPRESSPATCH®

ArmorSeal ExpressPatch is a 100% solids, waterbased urethane slurry mortar floor patch kit. It is designed to repair and protect concrete and masonry substrates from thermal shock, impact, corrosion, mild chemical attack and abrasion. It is to be applied at 3/16" minimum thickness (smooth) and broadcast to yield a 1/4" finished system (textured).

FEATURES:

- Inhibits microbial growth
- Low temperature application at 45°F - 80°F (7°C - 27°C) with very fast cure time
- Service temperatures from -50°F - 225°F (-45°C - 107°C)
- Can be applied to damp concrete

BENEFITS:

- Quick turnaround time in low temperature areas such as cold storage/warehousing
- Fast return to service - 6 hours
- Alternate applications - pea gravel can be added to produce a 6 inch mortar patching material

INSULATED METAL PANEL

INSULATED METAL PANEL REPAIR SYSTEM

Insulated Metal Panel is an insulative layer between sheet metal (metals) that provides a durable wall system for refrigeration applications. Typical areas of use are in walk-in coolers, walk-in freezers, refrigerated warehouses, insulated buildings, and blast freezers. Sherwin-Williams has unique and innovative systems to repair these areas. Please consult your Sales Representative for product recommendations.

DOORS, HANDRAILS

PRO INDUSTRIAL™ URETHANE ALKYD

Pro Industrial Urethane Alkyd is an abrasion resistant, high gloss urethane modified alkyd coating. It provides a durable, chip resistant hard film ideal for steel handrails, doors and piping.

FEATURES:

- Abrasion resistant
- Chip resistant

BENEFITS:

- Very durable hard film, less maintenance

LOADING DOCKS AND RAMPS

RESUFLO® 3746

Resuflo 3746 is a two-component, recoatable epoxy and binder resin. It may be used directly over primed substrates, or as a gloss seal coat over decorative slurry and mortar systems. It is extremely hard wearing, chemical, impact and abrasion resistant. This coating should be used in areas where maintenance of a high performance, aesthetically appealing and chemical resistant epoxy system is required. Resuflo 3746 is suited for use in clean rooms, laboratories, workshops, warehousing and light assembly areas.

FEATURES:

- Impact and abrasion resistant
- Durable, easy to clean
- Chemical resistant
- Acceptable for use in Canadian Food Processing facilities, categories: D2 (confirm acceptance of specific part numbers/ rexes with your S-W Sales Representative)
- Formulation available with a preservative to inhibit the growth of mildew on the coating surface
- Tint bases can be tinted using Maxitoner® at 50% tint strength

BENEFITS:

- Durable epoxy coating, less maintenance
- Inhibits bacteria growth when used with antimicrobial agent

RESUFLO SCREED TG46 STANDARD TROWELED MORTAR SYSTEM

Resuflo Screed TG46 Standard Troweled Mortar System protects substrates from conditions of heavy impact and wear along with resistance to many chemicals, acids and alkalis. It is a 1/8" - 1/4" high build resurfacing system utilizing an epoxy and silica aggregate mortar.

FEATURES:

- Protection from thermal shock, heavy impact and wear
- Resists degradation from many chemicals, acids and alkalis
- Wide range of colors available
- Varied skid resistance
- Formulation available with a preservative to inhibit the growth of mildew on the coating surface

BENEFITS:

- Long-lasting durability, less maintenance

FASTOP™ TOPFLOOR

FASTOP TOPFLOOR SL45 URETHANE SLURRY SYSTEM

FasTop Topfloor Urethane Slurry System and FasTop Topfloor SL45 Urethane Slurry System are designed to protect concrete and steel substrates from thermal shock, impact, corrosion, mild chemical attack and abrasion. They are waterborne urethane cementitious systems to be applied at 3/16" thickness and broadcast to yield a 1/4" - 3/8" finished system. A decorative quartz broadcast may be specified as an upgrade to the standard systems.

FEATURES:

- Moisture insensitive, can be applied to green concrete or slightly damp substrates
- Rapid cure and hardness development
- Excellent physical and chemical properties
- Hot water or direct steam resistances up to 220°F (104°C) with very good chemical resistance

BENEFITS:

- 6-8 hour minimal downtime, quick turnaround
- Waterborne coating that allows moisture vapor transmission to take place
- Thermal shock resistant
- Long-lasting durability, less maintenance with tough impact resistant properties

Select coatings may be formulated with a preservative to inhibit the growth of mildew on the select coating surface.

All Systems are acceptable for use in USDA inspected facilities.

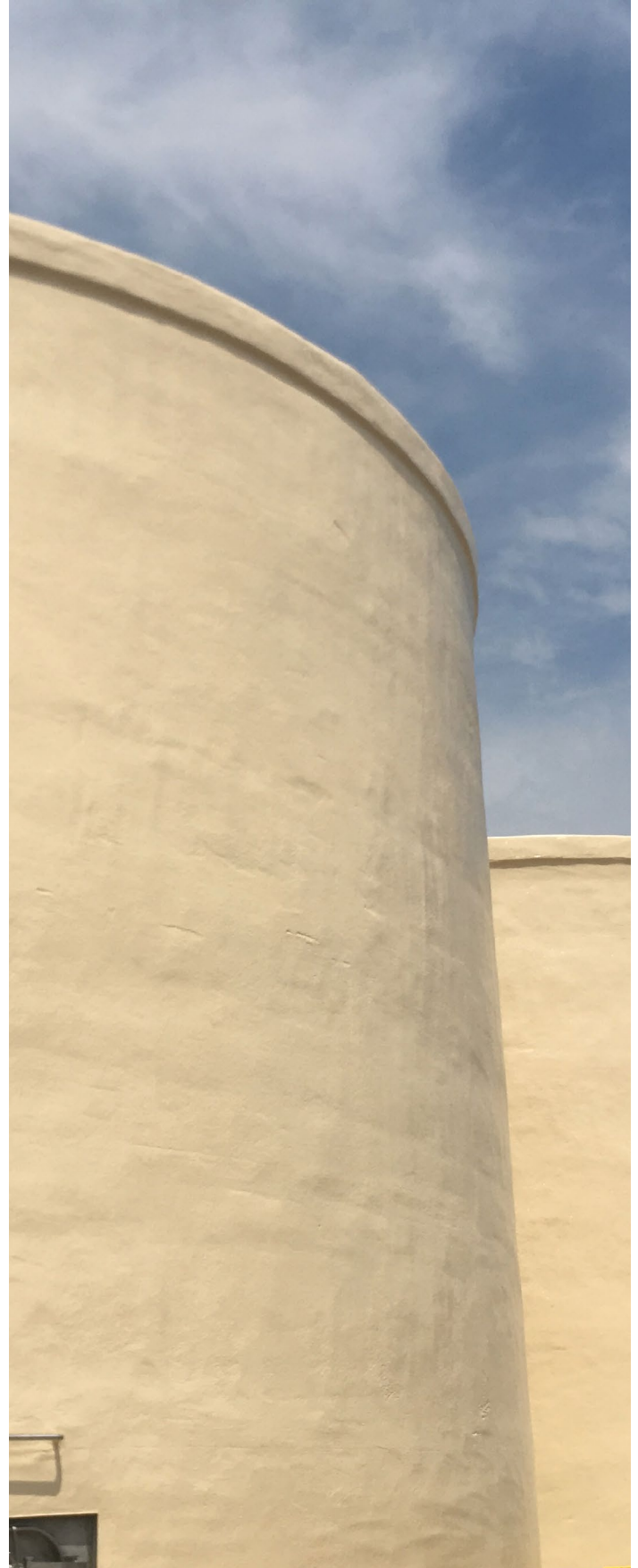
MODERATE: Suitable for occasional moisture and chemical exposure with semi-frequent wash downs

HEAVY: Suitable for constant moisture, chemical, thermal shock exposure with more frequent wash downs

EXTREME: Highest level of performance with regard to moisture, chemical, thermal shock exposure with high wash down frequency

STORAGE SILOS (EXTERIOR COATINGS)

SHER-LOXANE® 800	Sherwin-Williams Sher-Loxane 800 is an advanced polysiloxane coating that helps you reduce total operational costs with corrosion protection for a wide range of applications.
FEATURES:	<ul style="list-style-type: none"> • Fast cure part B available for accelerated applications • Spray, brush or roller application without thinning • Compatible with multiple substrates found in food & beverage facilities • One- or two-coat system
BENEFITS:	<ul style="list-style-type: none"> • Boosts cleanability from low surface tension • Protects assets with excellent corrosion and chemical resistance • Quick return to service • Extends maintenance intervals through long-term durability
PRO INDUSTRIAL™ ACRYLIC COATING	Our finest water based acrylic topcoat that exhibits excellent durability and abrasion resistance. Not affected by frequent wash downs, chemicals and cleaning agents.
FEATURES:	<ul style="list-style-type: none"> • Outstanding exterior durability • Flash rust/early rust resistant • Early moisture resistant • Excellent application properties (high gloss, fast dry, water clean up)
BENEFITS:	<ul style="list-style-type: none"> • Fast return to service • User-friendly application leads to reduced installation time • Long-lasting, aesthetically pleasing coating
WATERBASED ACROLON™ 100	This is a high gloss, abrasion resistant urethane that has excellent weathering properties.
FEATURES:	<ul style="list-style-type: none"> • Can be applied directly to water based and solvent based organic zinc-rich primers • Suitable for use in USDA inspected facilities • Acceptable for use in high performance architectural applications
BENEFITS:	<ul style="list-style-type: none"> • Long-lasting • Less maintenance and fewer repaints



DIRECT FOOD CONTACT STORAGE

STORAGE SILOS (INTERIOR LININGS)

HIGH SOLIDS CATALYZED EPOXY - SANITARY WHITE

This direct-to-metal epoxy is chemical resistant, corrosion resistant and has outstanding application properties. It can be used on the interior of storage silos. Sanitary White is FDA approved for food contact.

- FEATURES:**
- Meets FDA regulations 175.300*
 - Chemical and corrosion resistant
- BENEFITS:**
- Durable coating, less maintenance
 - User friendly system for applicators

DURA-PLATE[®] 7550

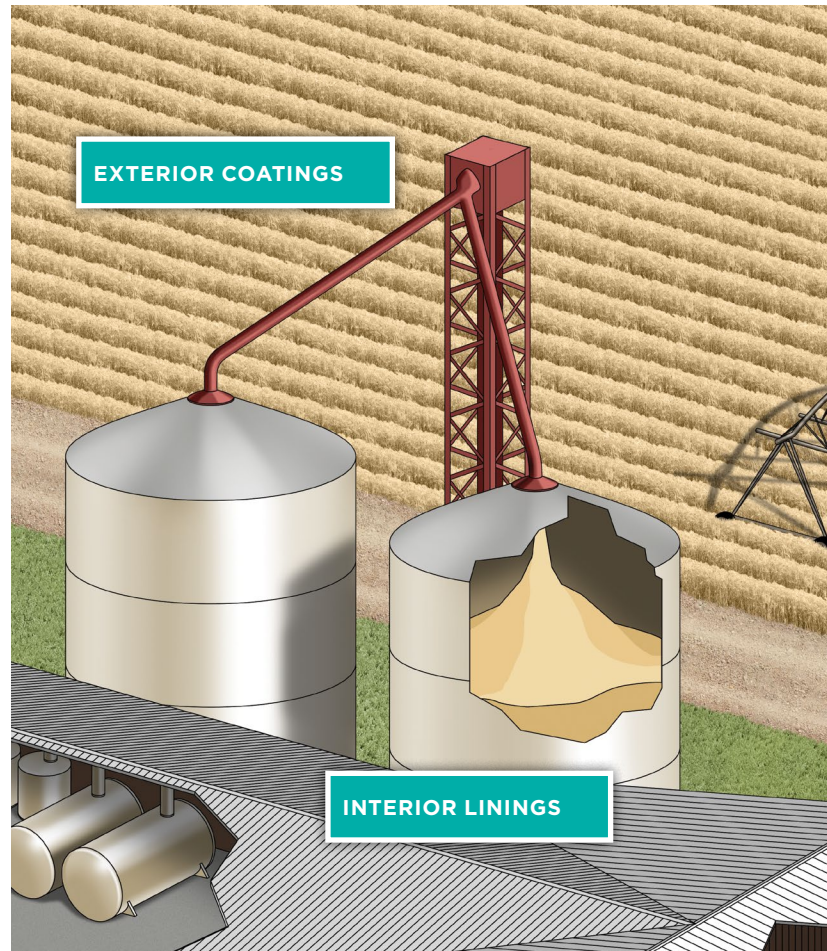
Dura-Plate 7550 is an ultra-high-solids epoxy phenolic lining designed to meet the demands of the Food and Beverage industry - delivering a lining that is non-BPA, compatible with a wide spectrum of wet and dry food commodities, is applied with single-leg application equipment and offers quick return to service even at ambient curing conditions.

- FEATURES:**
- FDA 21 CFR 175.300 compliant
 - Dry heat protection at 300°F constant, 400°F intermittent
 - Non-BPA formulation
 - Impact resistance up to 24 lbs
- BENEFITS:**
- Decreases the need to repair tanks with improved flexibility and edge coverage
 - Extends lining longevity through a formulation designed for high-temperature service -300°F constant, 400°F intermittent
 - Preserve lining integrity over longer periods of time and reduce the risk of spoiled commodities through improved flexibility and impact resistance up to 24 lbs

MAGNALUX[™] 304 FF

An immersion coating formulated with an extended pot life for application with conventional or airless spray equipment. Magnalux can be applied to steel or concrete surfaces. Recommended usage and complies with conditions of use D, E and F: Covering hot filled or pasteurized below 150°F (66°C); room temperature filled and stored (no thermal treatment in container); refrigerated storage. See product data sheet for further details on usage.

- FEATURES:**
- Highly cross-linked vinyl ester resin with mica flakes for maximum chemical and temperature resistance
 - FDA 175.300* compliant
- BENEFITS:**
- Long-lasting, durable coating - less maintenance and fewer repairs and repaints



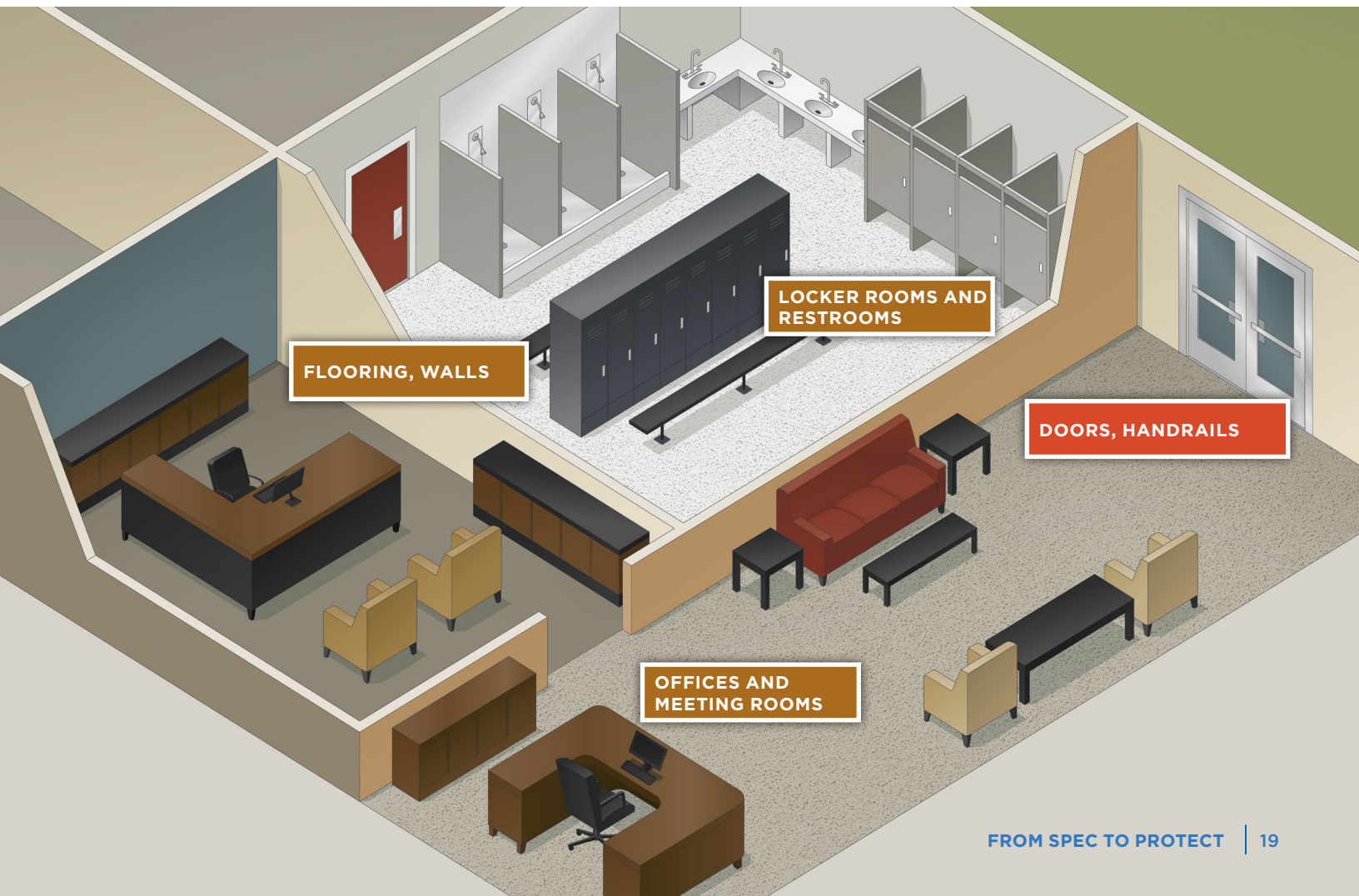
*Consult Product Data Sheet for specific use details. Ask a Sherwin-Williams professional about other alternative uses. All Systems are acceptable for use in USDA inspected facilities.

EMPLOYEE WELFARE AREAS

Our ability to provide a superior customer experience where and when you need us eliminates hassles for you!

Sherwin-Williams knows the right coatings are needed as soon as visitors and employees enter your facility and that first impressions are of the utmost importance. Food and beverage facility common areas require aesthetically pleasing coatings that also perform with long-lasting durability, safety and excellent functionality.

Sherwin-Williams offers a wide range of durable coatings that appeal to the eye and also appeal to your budget and schedule by requiring fewer repaints. With Just In Time inventory and a store around the corner to meet your specific color needs that can deliver as needed, stocking coatings for your office refresh is unnecessary!



EMPLOYEE WELFARE AREAS COATINGS SOLUTIONS

FLOORING

RESUFLOR™ 3746 Resufloor 3746 High Performance Epoxy is a two-component, recoatable epoxy and binder resin. It may be used directly over primed substrates or as a gloss seal coat over decorative slurry and mortar systems. It is extremely hard wearing, chemical, impact and abrasion resistant. This coating should be used in areas where maintenance of a high performance, aesthetically appealing and chemical resistant epoxy system is required. Resufloor 3746 is suited for use in clean rooms, laboratories, workshops, warehousing and light assembly areas.

- FEATURES:**
- Impact and abrasion resistant
 - Durable, easy to clean
 - Chemical resistant
 - Acceptable for use in Canadian Food Processing facilities, categories: D2 (confirm acceptance of specific part numbers/ rexes with your S-W Sales Representative)
 - Formulation available with a preservative to inhibit the growth of mildew on the coating surface
 - Tint bases can be tinted using Maxitoner® at 50% tint strength

- BENEFITS:**
- Durable epoxy coating, less maintenance
 - Inhibits bacteria growth when used with antimicrobial agent

RESUFLOR DECO FLAKE BC Resufloor Deco Flake BC is a mosaic pattern floor covering incorporating paint flakes in a clear or pigmented epoxy and then sealed with a clear, high gloss, polyurethane finish. It provides a high aesthetic value while delivering the durability required for a food processing facility.

- FEATURES:**
- Aesthetically pleasing appearance
 - Limitless color options utilizing multiple chip sizes
 - Seamless/High gloss finish
 - Chemical and stain resistant

- BENEFITS:**
- Durable epoxy coating, less maintenance
 - Long-lasting aesthetically pleasing coating

RESUFLOR DECO QUARTZ BC23 Resufloor Deco Quartz BC23 is a 1/8" system which incorporates decorative colored quartz aggregates with high solids epoxy resins and chemical resistant grout. It is topcoated to form a protective surface which is aesthetically pleasing, slip resistant, durable and resistant to wear, staining and chemicals.

- FEATURES:**
- Aesthetically pleasing appearance
 - Limitless color options utilizing multiple aggregate
 - Durable, wear and slip resistant
 - Chemical and stain resistant

- BENEFITS:**
- Durable epoxy coating, less maintenance
 - Long-lasting aesthetically pleasing coating

FLOORING

FASTOP™ DECO FLAKE SL45 FasTop Deco Flake SL45 is a 3/16" slurry designed to provide a functional yet aesthetic floor system for food and beverage applications. The system combines a fast curing, moisture insensitive, three-component base material with a mosaic paint chip broadcast, sealed with a high gloss, UV stable, clear topcoat. Use over properly prepared concrete substrate or as an overlay to existing well bonded resinous floors.

- FEATURES:**
- Fast turnaround time
 - Moisture insensitive
 - Slip resistant
 - Chemical resistant

- BENEFITS:**
- Quick return to service
 - Coating allows for moisture vapor transmission
 - Added texture allows for increased slip resistance, less chance of slip/fall



WALLS

PRO INDUSTRIAL™ ACRYLIC COATING	Pro Industrial Acrylic Coating is our finest water based acrylic topcoat with excellent durability and abrasion resistance. It can withstand frequent cleanings and has very good resistance to chemicals and cleaning agents.
FEATURES:	<ul style="list-style-type: none"> Outstanding exterior durability Flash rust/early rust resistant Early moisture resistant Excellent application properties (high gloss, fast dry, water clean up)
BENEFITS:	<ul style="list-style-type: none"> Fast return to service User friendly application leads to reduced installation time Long-lasting, aesthetically pleasing coating
PRO INDUSTRIAL WATERBASED CATALYZED EPOXY	Pro Industrial Waterbased Catalyzed Epoxy provides excellent corrosion resistance, abrasion resistance and chemical resistance and is ideal for areas requiring a durable sanitary coating that can be easily cleaned. It is an interior/exterior two-component, polyamine epoxy topcoat.
FEATURES:	<ul style="list-style-type: none"> Early moisture resistance, fast drying Chemical, impact, and abrasion resistant Outstanding application properties Resists yellowing
BENEFITS:	<ul style="list-style-type: none"> Fast dry allows for quick return to service Long-lasting and durable, less maintenance User friendly application allows for quick installation Long-lasting color, fewer repaints
RESUWALL™ AQUA WALL SYSTEM	Resuwall Aqua Wall System is a high-performance water-based epoxy for areas subjected to routine and aggressive wash down and sanitation practices. Resuwall Aqua Wall System is a multilayer, high build wall and ceiling surfacing system utilizing an epoxy basecoat and topcoat for durability. The system is available with two coats providing unique crack bridging and impact resistance. It can be used on CMU and poured concrete.
FEATURES:	<ul style="list-style-type: none"> Very good chemical resistance and abrasion resistance Excellent resistance to moisture and thermal shock Smooth and durable with excellent adhesion to concrete Highly washable surface that will inhibit growth of fungus or bacteria per test specified TT-P-34
BENEFITS:	<ul style="list-style-type: none"> Can be applied over a slightly damp surface Unlimited S-W color selection Long-lasting and durable – product will not lose bond due to thermal shock Professional looking wall coating that inhibits the growth of fungus or bacteria
RESUWALL AQUA FR WALL SYSTEM	Resuwall Aqua FR Wall System is a fiber reinforced epoxy resin system designed for application to walls and ceilings in demanding environments such as food processing facilities. This unique resin combines the toughness expected from a fiber reinforced epoxy with the ease of application using a brush, roller or spray. The Resuwall Aqua FR Wall System provides excellent performance properties including light (UV) resistance not typical of epoxy based systems. It can be used on drywall for enhanced reinforcement and durability.
FEATURES:	<ul style="list-style-type: none"> Very good impact and abrasion resistance that resists cracking Very good chemical resistance and is well suited for wash down areas Good color stability Provides a smooth tight surface with a light stipple texture
BENEFITS:	<ul style="list-style-type: none"> Long-lasting durability, less maintenance Aesthetically pleasing with good color stability

DOORS, HANDRAILS

PRO INDUSTRIAL URETHANE ALKYD	Pro Industrial Urethane Alkyd is an abrasion resistant, high gloss urethane modified alkyd coating. It provides a durable, chip resistant hard film ideal for steel handrails, doors and piping.
FEATURES:	<ul style="list-style-type: none"> Abrasion resistant Chip resistant
BENEFITS:	<ul style="list-style-type: none"> Very durable hard film, less maintenance

All Systems are acceptable for use in USDA inspected facilities.



MODERATE: Suitable for occasional moisture and chemical exposure with semi-frequent wash downs

HEAVY: Suitable for constant moisture, chemical, thermal shock exposure with more frequent wash downs

EXTREME: Highest level of performance with regard to moisture, chemical, thermal shock exposure with high wash down frequency

FOOD & BEVERAGE

CREATING A CLEAN, SAFE AND
COMPLIANT ENVIRONMENT

THE SHERWIN-WILLIAMS DIFFERENCE

Sherwin-Williams Protective & Marine delivers world-class industry subject matter expertise, unparalleled technical and specification service, and unmatched regional commercial team support to our customers around the globe. Our broad portfolio of high-performance coatings and systems that excel at combating corrosion helps customers achieve smarter, time-tested asset protection. We serve a wide array of markets across our rapidly growing international distribution footprint, including Oil & Gas, Water & Wastewater, Bridge & Highway, Steel Fabrication, Flooring, Food & Beverage, Fire Protection, Marine, Rail and Power.



Unparalleled
distribution network



Global
industry expertise



Most extensive sales
organization coverage



Unmatched technical
and specification service

United States & Canada

sherwin-williams.com/protective
swprotective@sherwin.com

SHERWIN-WILLIAMS®

© 2022 The Sherwin Williams Company
PM 779240 BR 7/22