



A NOVEL AND INNOVATIVE EROSION-RESISTANT COATING SYSTEM

Pipeclad Frac-Shun ERC stands at the forefront of pipeline protection during energy extraction, addressing a critical industry challenge – the rapid erosion of inner pipe surfaces within 6-18 months. This erosive phenomenon not only leads to leaks but forces unplanned shutdowns, demanding costly pipe replacements.

Enter Pipeclad Frac-Shun ERC, a groundbreaking erosion-resistant coating system designed to be a blockade against the erosive forces experienced during the extraction phase of oil and gas operations. This system doesn't just protect; it transforms the narrative of pipeline longevity. With the potential to double the asset life expectancy before replacement is necessary, Pipeclad Frac-Shun ERC gives unparalleled value to customers, reshaping industry expectations and redefining the standard for pipeline coatings. By extending service life and minimizing steel loss, this system significantly reduces downtime and maintenance costs.

BENEFITS



Extended Service Life

Ultra-high erosion resistance prolongs the life of pipeline and elbow sections.



Reduced Steel Loss

Minimizes damage and leakage during energy extraction, preserving valuable assets.



Extended Maintenance Cycles

Decreases production downtime by offering longer maintenance intervals.

HIGHLIGHTS

Unrivaled Protection: Withstands high-velocity fluids and grit, preventing erosion and maintaining coating integrity.

Proven Performance: Rigorous lab testing and field trials confirm superior adhesion, chemical resistance and erosion protection.

Cost-Efficient: Avoid expensive repairs and replacements while ensuring a robust and enduring solution.

FROM SPEC TO PROTECT

protective.sherwin.com

PIPECLAD™ FRAC-SHUN ERC

A NOVEL AND INNOVATIVE EROSION-RESISTANT COATING SYSTEM

INDUSTRY APPLICATIONS

End-use applications

- **Oil & Gas:** Ideal for wellheads and pipelines in demanding fracking operations.

Intended substrates

- Piping
- Elbows
- Complex geometry



WHY CHOOSE PIPECLAD FRAC-SHUN ERC?

Why Choose Pipeclad Frac-Shun ERC?

Cost Savings:

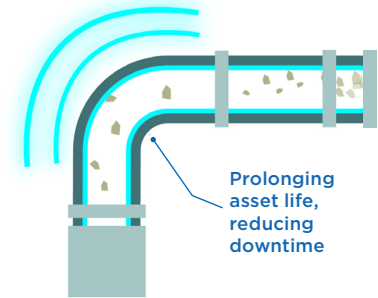
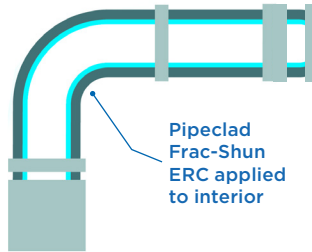
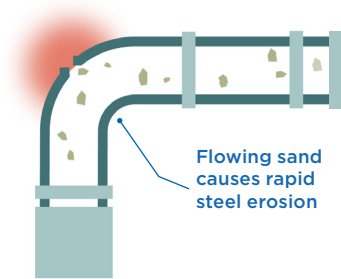
Reduce overall maintenance costs and extend the operational life of critical assets.

Unmatched Reliability:

Be confident in the longevity of your infrastructure with a coating system designed for the toughest conditions.

Proven Results:

Laboratory testing and field trials validate the efficacy of Pipeclad Frac-Shun ERC in real-world applications.



UNMATCHED DISTRIBUTION AND SERVICE

Products You Need Right Now

Get the products you need with same- or next-day delivery and gain access to local inventory at more than 5,000 company-owned distribution points in North America.

Technical Service for Optimal Applications

Our technical service team offers extensive technology, product knowledge and manufacturer equipment training to ensure proficiency throughout the entire coatings process.

THE SHERWIN-WILLIAMS DIFFERENCE

Sherwin-Williams Protective & Marine delivers world-class industry subject matter expertise, unparalleled technical and specification service, and unmatched regional commercial team support to our customers around the globe. Our broad portfolio of high-performance coatings and systems that excel at combating corrosion helps customers achieve smarter, time-tested asset protection. We serve a wide array of markets across our rapidly growing international distribution footprint, including Energy, Water & Wastewater, Bridge & Highway, Steel Fabrication, Flooring, Manufacturing & Processing, Fire Protection, Marine, Rail and Power.

United States & Canada

protective.sherwin.com

swprotective@sherwin.com

SHERWIN-WILLIAMS®

©2024 The Sherwin-Williams Company
Protective & Marine Coatings
PM-1419278-SS 5/24