



DURABLE NONSKID COATINGS PORTFOLIO

Safety, compliance and coating application efficiency go hand-in-hand in the rail industry. Sherwin-Williams offers the ResuGrip line of nonskid safety coatings to help rail car owners reduce risk while driving throughout application efficiencies for shops.

BENEFITS

- Impact and abrasion resistance
- Low VOC and water-based options
- Quick dry to handle times
- Easy mix, non-settling single component
- Selection of standard rail colors; custom color available upon request
- Optimized application
- Long shelf life
- Backed by best-in-class distribution across North America

RECOMMENDED USES

- Ladders
- Handrails
- Exterior roofs
- Tank car crow's nests



FROM SPEC TO PROTECT

6-13-23_acc [Accessibility Statement](#)

[sherwin-williams.com/protective](https://www.sherwin-williams.com/protective)

RESUGRIP™ SAFETY COATINGS

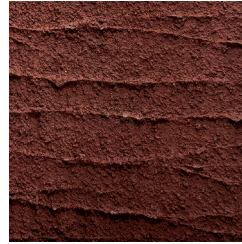
NONSKID COATING SOLUTIONS



White



Hopper Grey



Tile Red



Black

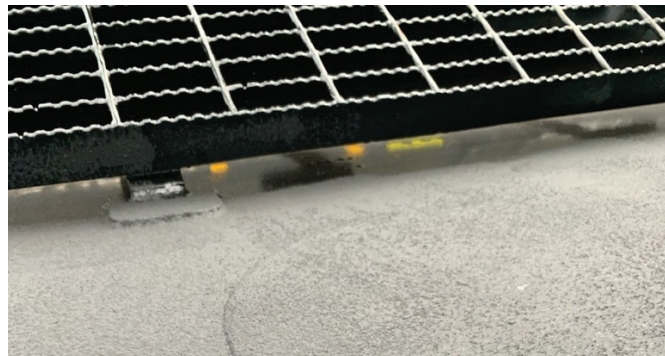
RESUGRIP 075: SINGLE-COMPONENT, GENERAL PURPOSE ACRYLIC

Benefits

- Excellent adhesion to metal surfaces over a wide range of freshly applied or existing coatings
- Economical; opened container may be resealed and saved for future use
- Non-flammable and non-sparking exaggerate for use in mechanical shop spaces
- Unlimited potlife
- Convenient 3-gallon container packaging
- Aggregate stays suspended with little agitation required

COF*: Dry — 1.3, Wet - .09

*Coefficient of Friction, ASTM F609



RESUGRIP 150: SINGLE COMPONENT, VERSATILE USE EPOXY

Benefits

- Excellent adhesion to metal surfaces over a wide range of freshly applied or existing coatings
- Good chemical resistance to oil, gasoline, acids, caustics and most solvents
- Economical; opened container may be resealed for future use
- Unlimited potlife
- Convenient 3-gallon container packaging
- Aggregate stays suspended with little agitation required

COF*: Dry — 1.2, Wet - 1.0



THE SHERWIN-WILLIAMS DIFFERENCE

Sherwin-Williams Protective & Marine delivers world-class industry subject matter expertise, unparalleled technical and specification service, and unmatched regional commercial team support to our customers around the globe. Our broad portfolio of high-performance coatings and systems - including protective liquid and powder, fire protection and resinous flooring - excel at combating corrosion and help customers achieve smarter, time-tested asset protection. We serve a wide array of markets across our rapidly growing international distribution footprint, including Bridge & Highway, Energy, High Value Infrastructure, Manufacturing & Processing, Marine, Rail, Power and Water & Wastewater.

sherwin-williams.com/protective
swprotective@sherwin.com

Colors shown are an approximate match.

SHERWIN-WILLIAMS®

©2022 The Sherwin-Williams Company
Protective & Marine Coatings
PM-838143-01-SS 5/23