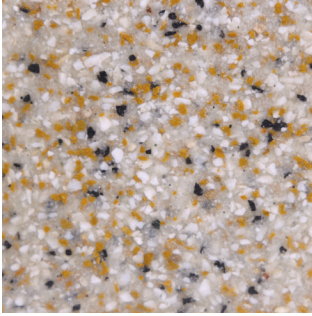
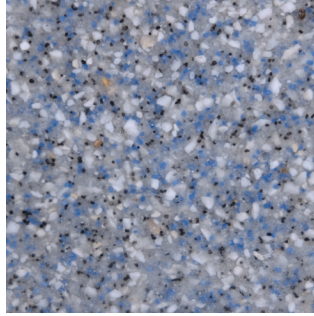


SEAGUARD ONE-STEP COLORS

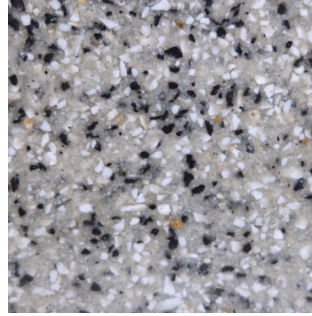
Our SeaGuard One-Step palette offers eight vibrant primary color blends with the ability to create unique custom blends upon request. Contact your Sherwin-Williams representative for details.



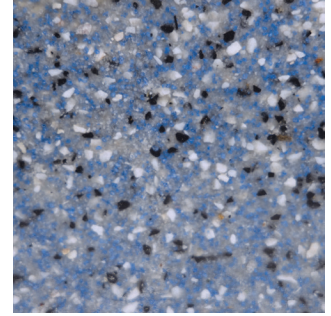
MAVERICK



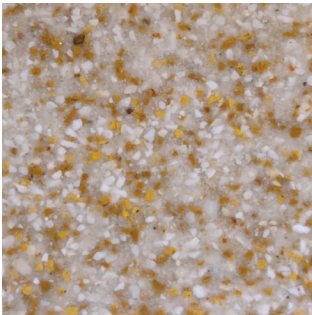
DAGO



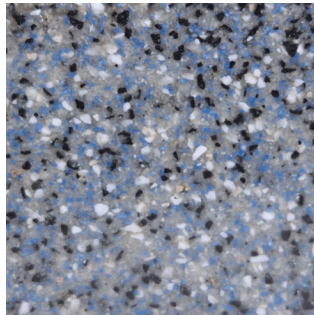
BATTLE STATION



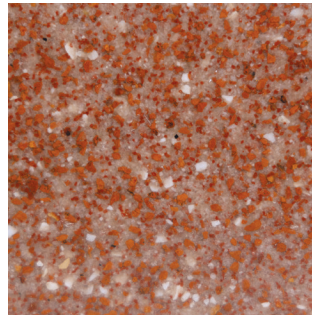
COMMODORE



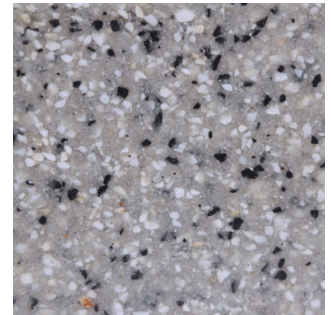
EVOLUTION



GUNNER



MUSTANG



FLIGHT LINE

Colors are an approximate match

THE SHERWIN-WILLIAMS DIFFERENCE

Sherwin-Williams Protective & Marine delivers world-class industry subject matter expertise, unparalleled technical and specification service, and unmatched regional commercial team support to our customers around the globe.

The industry experts at Sherwin-Williams Protective & Marine are renowned authorities in their respective fields of knowledge - including Bridge & Highway, Fire Protection, Flooring, Food & Beverage, Freight Rail, Marine, Oil & Gas, Power Generation, Steel Fabrication and Water & Wastewater. Our global technology expertise in areas including tank linings, passive fire protection, corrosion under insulation (CUI) testing and fusion-bonded epoxy drives game-changing innovation and influences global industry standards.

North America

sherwin-williams.com/protective
swprotective@sherwin.com