



## RAISING THE BAR WITH ADVANCED COATING TECHNOLOGY

Sherwin-Williams leads the way with industry-disruptive innovation for steel reinforcing applications. Introducing Sher-Bar TEC (Textured Epoxy Coating), designed to meet the performance of ASTM A1124/A1124M. Sher-Bar TEC prevents, protects and preserves:

- Prevents corrosion by creating a barrier blocking rust-causing materials.
- Protects from damage with enhanced durability and sustainability.
- Preserves the bond between the rebar and concrete with a proprietary textured finish.

### BENEFITS



#### Asset Management

- Improved damage tolerance extends the life of the asset — exceptional film protection against on-site handling.
- Enhanced concrete performance through crack mitigation — reduced cracks and crack widths.
- Reduces rebar congestion for bridge decks, piers, columns and general building construction.



#### Sustainability

- Extends life assets through increased bond strength with concrete, compared to traditional epoxy coatings.
- Reduces required splice length and rebar congestion for bridge decks, piers, columns and general building construction relative to traditional epoxy coatings.
- Works synergistically with geotextiles and unique chemistries to enable next-generation cementitious materials.



#### Safety

- Textured surface provides slip resistance — can help reduce on-site slip and fall incidents.
- Improved adhesion to concrete — steel cages may retain more concrete during seismic events, thereby reducing falling debris.
- Reduced maintenance minimizes workplace incidents.

### HIGHLIGHTS

Minimizes micro-cracking

---

Maximizes bond interaction between rebar and concrete

---

Reduction in deck weight is possible

---

Superior damage tolerance

---

Exceeds flexibility requirements of ASTM A775

---

Best life cycle cost for reinforcing technology

---

### FROM SPEC TO PROTECT

[sherwin-williams.com/protective](https://sherwin-williams.com/protective)

03-2024  
Accessibility Statement

# SHER-BAR™ TEC

## TEXTURED EPOXY COATING

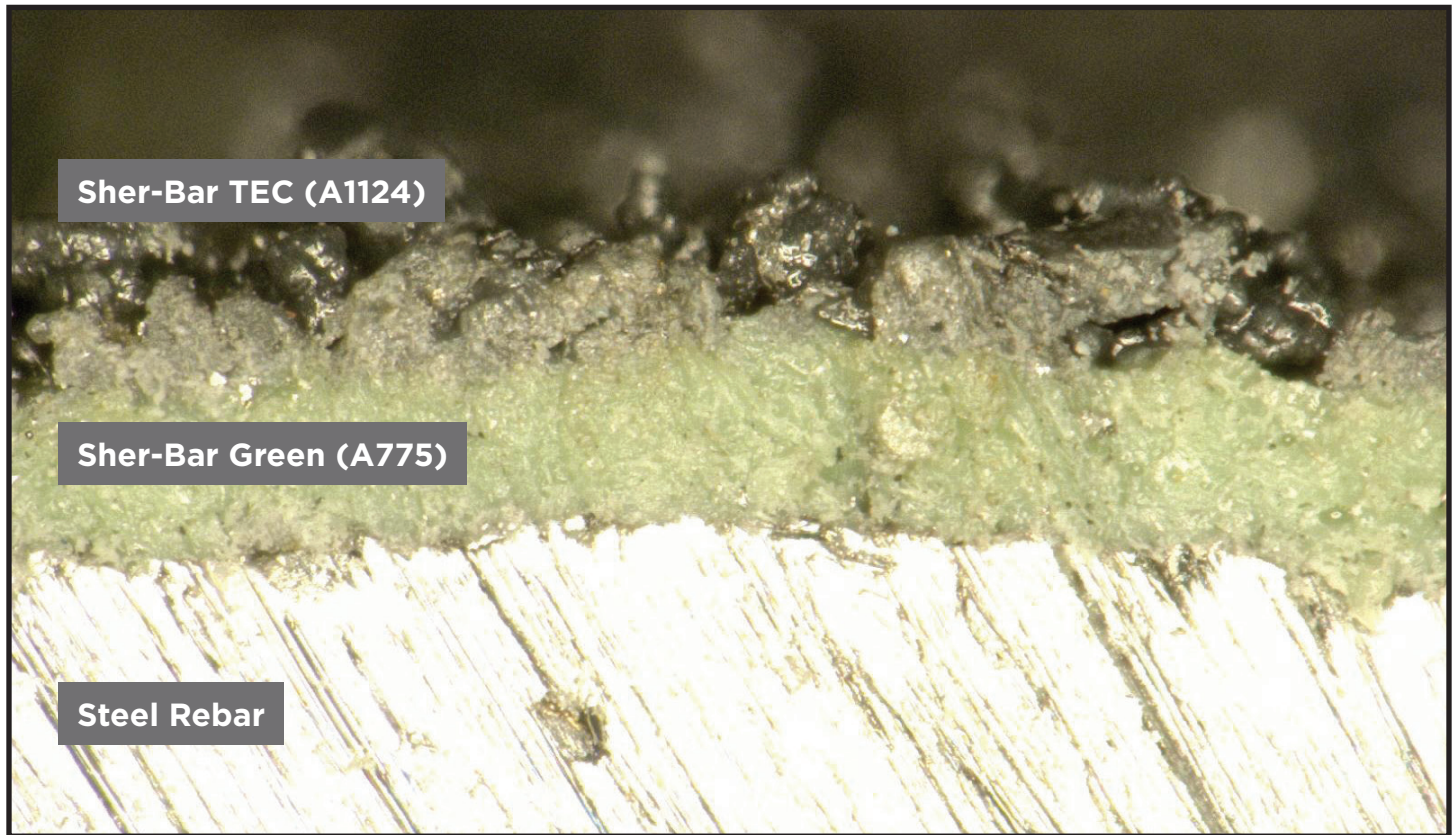
### A TWO-LAYER MONOLITHIC COATING SYSTEM

To ensure a monolithic fusion-bonded epoxy coating, Sher-Bar Green and Sher-Bar TEC are applied sequentially and cured together. This process ensures that the resultant coating layers are chemically bonded together, making a “monolithic” system that will **PREVENT, PROTECT and PRESERVE**.

**First layer:** Sher-Bar Green helps **PREVENT** corrosion.

**Second layer:** Sher-Bar TEC **PROTECTS** the first layer from damage and **PRESERVES** the concrete bonding.

### MONOLITHIC - COVALENTLY BONDED LAYERS



### THE SHERWIN-WILLIAMS DIFFERENCE

Sherwin-Williams Protective & Marine delivers world-class industry subject matter expertise, unparalleled technical and specification service, and unmatched regional commercial team support to our customers around the globe. Our broad portfolio of high-performance coatings and systems that excel at combating corrosion helps customers achieve smarter, time-tested asset protection. We serve a wide array of markets across our rapidly growing international distribution footprint, including Energy, Water & Wastewater, Bridge & Highway, Steel Fabrication, Flooring, Manufacturing & Processing, Fire Protection, Marine, Rail and Power.

#### North America

[sherwin-williams.com/protective](https://sherwin-williams.com/protective)  
[swprotective@sherwin.com](mailto:swprotective@sherwin.com)

**SHERWIN-WILLIAMS®**

©2024 The Sherwin-Williams Company  
Protective & Marine Coatings  
PM 1450354-SS 3/24