



## FAST-SET POLYURETHANE FOR SOLAR STEEL PILINGS

**POLY-COTE™ 110** provides long-lasting corrosion barrier protection for steel pilings used to support photovoltaic panel arrays and other infrastructure at solar power projects. This fast-setting, 100%-volume solids polyurethane offers single-coat application over properly prepared steel and galvanized substrates. It is ideal for use in buried service applications and can contribute to value engineering, increased asset life protection, and cost savings for solar projects.

### BENEFITS



#### Superior Corrosion Protection

Eliminates the need for corrosion allowance, thereby reducing steel weight and cost.



#### Ultra-Low Permeability

Suitable in all soil conditions including locations with low resistivity, low pH, high levels of chlorides or sulfates, and high soil moisture content.



#### Cost Effectiveness

Provides optimal shop throughput and efficiency to lower installed cost.



#### Extreme Impact Resistance

Minimal damage during shipping, handling and pile driving processes.

### HIGHLIGHTS

Ultra-durable hydrophobic film

Non-sacrificial barrier to corrosion

Excellent chemical resistance

Outstanding adhesion

Superior abrasion resistance

High-build formula

Extremely fast curing

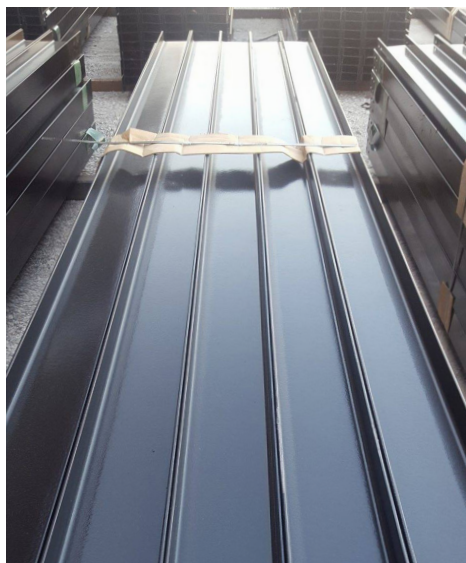
**FROM SPEC TO PROTECT**

[protective.sherwin.com](http://protective.sherwin.com)

**SHERWIN  
WILLIAMS®**

# POLY-COTE™ 110

## SOLAR PILE COATING



### Performance Characteristics

Physical Property	ASTM Test Std	C222 Requirement	Poly-Cote 110
Adhesion	ASTM-D4541, Annex D2	1,500 psi	> 1,500 psi, rating 10
Cathodic Disbondment	ASTM-G95	12 mm radius	< 12 mm radius
Impact Resistance	ASTM-G14	40 in-lbs, minimum	> 75 in-lbs
Adhesion Resistance	ASTM-D4060, 1,000 rev	100 mg loss, maximum	< 50 mg loss
Water Absorption	ASTM-D570 (30 day)	2%, maximum	< 2%
Dielectric Strength	ASTM-D149	200 V/mil, minimum	> 400 V/mil
Chemical Resistance	ASTM-D543	10% H <sub>2</sub> SO <sub>4</sub> < 5% 30% NaCl < 5% 30% NaOH < 5% Diesel Fuel < 5%	pass pass pass pass

### THE SHERWIN-WILLIAMS DIFFERENCE

Sherwin-Williams Protective & Marine delivers world-class industry subject matter expertise, unparalleled technical and specification service, and unmatched regional commercial team support to our customers around the globe. Our broad portfolio of high-performance coatings and systems that excel at combating corrosion helps customers achieve smarter, time-tested asset protection. We serve a wide array of markets across our rapidly growing international distribution footprint, including Energy, Water & Wastewater, Bridge & Highway, Steel Fabrication, Flooring, Manufacturing & Processing, Fire Protection, Marine, Rail and Power.

**United States and Canada**  
[protective.sherwin.com](http://protective.sherwin.com)  
[swprotective@sherwin.com](mailto:swprotective@sherwin.com)

**SHERWIN-WILLIAMS®**

©2021-2024 The Sherwin-Williams Company  
 Protective & Marine Coatings  
 PM-1690725-SS 7/24