

**SHERWIN  
WILLIAMS®**

# **FASTOP™ SYSTEMS**

POLYURETHANE CEMENT HIGH  
PERFORMANCE FLOORING



**DESIGNED TO PERFORM**

[resinflooring.sherwin.eu](https://resinflooring.sherwin.eu)



# FASTOP™ SYSTEMS

POLYURETHANE CEMENT  
HIGH PERFORMANCE FLOORING

## CONTENTS

FasTop TG69 screed systems	4
FasTop RS69 screed systems	5
FasTop SL45 self levelling systems	6
FasTop SL23 self levelling systems	7
FasTop DP uniform textured anti-slip screed systems	8
FasTop Terrazzo decorative screed systems	9
FasTop Ancillary products	10
FasTop colour range	11
FasTop installation	12-13

## FASTOP SYSTEM CERTIFICATIONS

FasTop systems are specifically designed for use within food manufacturing, food processing and food service industries. Our tried and tested range of food-safe, non-slip resin flooring systems comply with strict hygiene and safety standards as stipulated by the HACCP International system (Hazard Analysis and Critical Control Point).

These requirements are specified by authorities such as the Global Food Safety Initiative (GFSI), the Food Standards Agency (FSA) and the European Food Safety Authority (EFSA) to ensure food factories maintain the highest standards of handling and production. The Sherwin-Williams flooring range being HACCP certified performs to these standards for food manufacturing, distilleries, wineries and breweries, dairies, meat processing, bakeries, confectionaries and pet food factories.



FasTop systems are HACCP International certified as food safe.

Members of  
**Campden BRI**

FasTop systems are Campden BRI certified as non-taint and odourless.



CE Mark

The FasTop polyurethane cement proven formulation has been tried and tested for over 20 years by some of the world's largest organisations. These systems provide hygienic, chemical resistant and slip resistant flooring solutions which are extremely hard wearing, making FasTop the ideal choice for the most demanding environments.

### BENEFITS

- Slip resistant
- High chemical resistance
- Resistant to hot water and steam cleaning
- Self-sealing
- Matt finish
- Extremely hard wearing
- HACCP certified for food facilities.

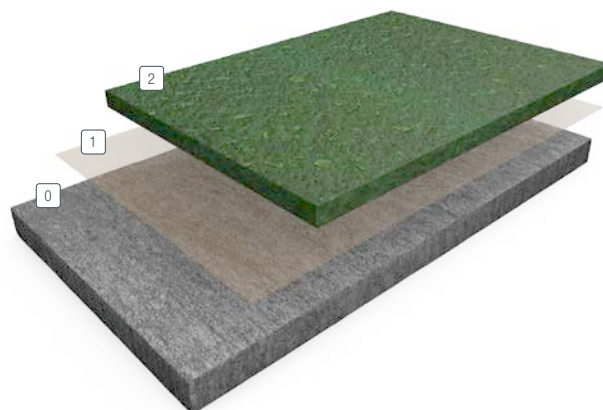
### SCOPE OF USE

- Food manufacture and processing
- Chemical plants
- Medical and veterinary practices
- Brewing and distilling facilities
- Dairies
- Heavy duty plant and high traffic areas
- Engineering environments.

# FASTOP™ TG69

## POLYURETHANE CEMENT FLOOR SCREED SYSTEM

FasTop TG69 is a very heavy duty antimicrobial polyurethane cement floor screed system providing superb resistance against chemical attack, thermal shock and abrasion. A food grade non-taint and odourless product, providing slip resistance in wet and dry conditions. When installed at 9 mm thickness the system is resistant to steam cleaning, boiling water and process liquids up to 120°C and also suitable for freezer temperatures down to -40°C.



Traffic	Cure to service (hrs)		
	10°C	20°C	30°C
Light	24-36	12-16	8-12
Designed	48-72	36-48	24-36
Full cure	8 days	5-7 days	5 days

- ① Substrate:
- ① Primer (optional): FasTop Multi Primer
- ② Screed: FasTop Multi TG69

### BENEFITS

- High chemical resistance
- Food safe and non-taint (HACCP and Campden BRI approved)
- Resistance to hot water and steam
- Self-sealing
- Excellent slip resistant finish
- Matt finish system
- Extremely hard wearing
- Non dusting

### SCOPE OF USE

- Food manufacture and processing
- Brewing and beverage
- Dairies
- Commercial kitchens
- Pharmaceutical and chemical plant processing
- Abattoirs and meat processing facilities
- Heavy duty plant and traffic areas

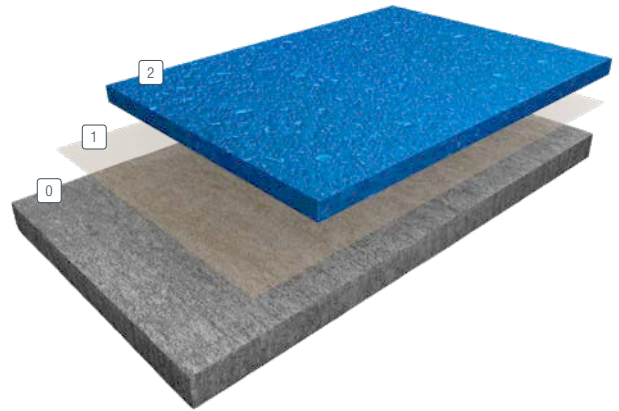
### TYPICAL PHYSICAL PROPERTIES

Hardness @ 24 hours, Shore D	BS ISO 7619-1:2010	72
Abrasion resistance	EN 13892-5	AR 2
Compressive strength	EN13892-2	52.9 N/mm <sup>2</sup>
Tensile strength	BS 6319-7	1.9 N/mm <sup>2</sup>
Flexural strength	EN 13892-2	0.4 N/mm <sup>2</sup>
Bond strength	EN13813	>3 N/mm <sup>2</sup> (substrate failure)
Impact resistance	EN ISO 6272	>4
Temperature resistance	Tolerant of temperatures up to 120°C at 9 mm	
Chemical resistance	Excellent	
Reaction to fire	EN13501-1	B <sub>FL</sub> - s1
UV stable	No	
FerFa class	Class 8	
System thickness	6-9 mm	
CE Marked screeds	BS EN 13813:2002	

# FASTOP™ RS69

## POLYURETHANE CEMENT RESIN RICH FLOOR SCREED SYSTEM

FasTop RS69 is a heavy duty resin rich antimicrobial polyurethane cement floor screed system providing superb resistance against chemical attack, thermal shock and abrasion. A food grade non-taint and odourless product, providing slip resistance in wet and dry conditions. For fast installation FasTop RS69 can be applied by rake, trowel or screedbox as a resin rich system. Resistant to steam cleaning, boiling water and process liquids up to 120°C and suitable for freezer temperatures down to -40°C at 9 mm thickness.



Traffic	Cure to service (hrs)		
	10°C	20°C	30°C
Light	24–36	12–16	8–12
Designed	48–72	36–48	24–36
Full cure	8 days	5–7 days	5 days

- ① Substrate:
- ① Primer (optional): FasTop Multi Primer
- ② Screed: FasTop Multi RS69

### BENEFITS

- High chemical resistance
- Resin rich system
- Resistance to hot water and steam
- Self sealing
- Excellent slip resistant finish
- Matt finish system
- Extremely hard wearing
- Non dusting
- Food safe and non-taint (HACCP and Campden BRI approved)

### SCOPE OF USE

- Food manufacture and processing
- Brewing and beverage
- Dairies
- Commercial kitchens
- Pharmaceutical and chemical plant processing
- Abattoirs and meat processing facilities
- Heavy duty plant and traffic areas

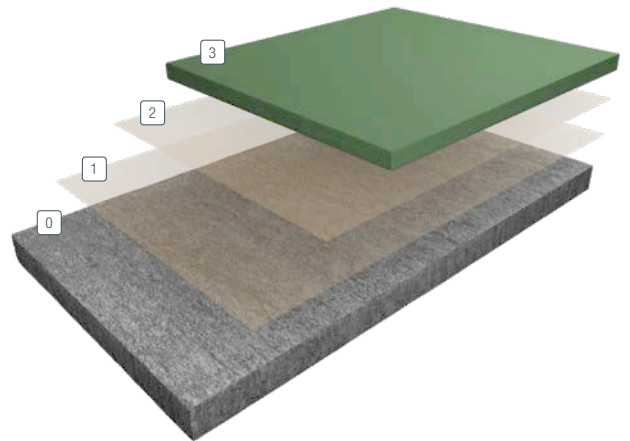
### TYPICAL PHYSICAL PROPERTIES

Hardness @ 24 hours, Shore D	BS ISO 7619-1:2010	72
Abrasion resistance	EN 13892-5	AR 1
Compressive strength	EN13892-2	54 N/mm <sup>2</sup>
Tensile strength	BS 6319-7	3.5 N/mm <sup>2</sup>
Flexural strength	EN 13892-2	0.5 N/mm <sup>2</sup>
Bond strength	EN13813	>3 N/mm <sup>2</sup> (substrate failure)
Impact resistance	EN ISO 6272	>4
Temperature resistance	Tolerant of temperatures up to 120°C at 9 mm	
Chemical resistance	Excellent	
Reaction to fire	EN13501-1	B <sub>FL</sub> - s1
UV stable	No	
FerFa class	Class 8	
System thickness	6–9 mm	
CE Marked screeds	BS EN 13813:2002	

# FASTOP™ SL45

## POLYURETHANE CEMENT SELF-LEVELLING FLOOR SCREED SYSTEM

FasTop SL45 is a 4-5 mm thick antimicrobial polyurethane cement self-levelling resin floor system which provides a heavy duty finish with superb resistance against chemical attack, hot water and abrasion. FasTop SL45 is a food grade, non-taint odourless product and provides a smooth profile making it ideal for food and beverage production areas where maximum hygienic standards are required. FasTop SL45 is also suitable for freezer temperatures down to -25°C.



Traffic	Cure to service (hrs)		
	10°C	20°C	30°C
Light	24-36	12-16	8-12
Designed	72-96	48-72	24-48
Full cure	8 days	5-7 days	5 days

- 0 Substrate:
- 1 Primer  
FasTop Multi Primer
- 2 Primer (optional)  
FasTop Multi Primer
- 3 Screed:  
FasTop Multi SL45

### BENEFITS

- High chemical resistance
- Resistance to hot water
- Self-sealing
- Extremely hard wearing
- Food safe and non-taint, (HACCP and Campden BRI approved)
- Non dusting
- Matt finish

### SCOPE OF USE

- Food manufacture and processing
- Brewing and beverage
- Dairies
- Commercial kitchens
- Pharmaceutical and chemical plant processing
- Abattoirs and meat processing facilities
- Heavy duty plant and traffic areas

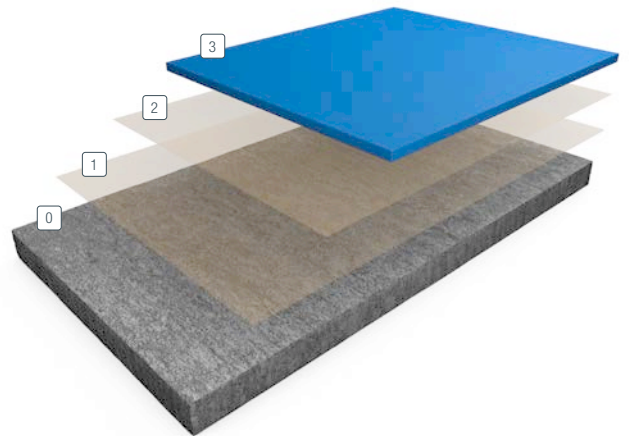
### TYPICAL PHYSICAL PROPERTIES

Hardness @ 24 hours, Shore D	BS ISO 7619-1:2010	80
Abrasion resistance	BS EN 13892-5:2003	AR 0.5
Compressive strength	BS EN ISO 604:2003	54 MPa
Tensile strength	BS EN ISO 527-2:2012	7 N/mm <sup>2</sup>
Flexural strength	BS EN ISO 178+A1:2013	14 N/mm <sup>2</sup>
Bond strength	BS EN 13892-8:2002	>3 N/mm <sup>2</sup> (substrate failure)
Impact resistance	EN ISO 6272	>4
Temperature resistance	Tolerant of temperatures up to 90°C at 5 mm	
Chemical resistance	Excellent	
Reaction to fire	BS EN 13501-1:2018	BFL – s1
UV stable	No	
FerFa class	Class 7	
System thickness	4-5 mm	
CE Marked screeds	BS EN 13813:2002	

# FASTOP™ SL23

## POLYURETHANE CEMENT SELF-LEVELLING FLOOR SCREED SYSTEM

FasTop SL23 is a 3 mm thick antimicrobial polyurethane cement self-levelling resin floor system which provides a heavy duty finish with superb resistance against chemical attack, hot water and abrasion. FasTop SL23 is a food grade, non-taint and odourless product making it ideal for food and beverage production areas where a smooth finish is required for maximum hygienic standards. FasTop SL23 is also suitable for freezer temperatures down to -20°C.



Traffic	Cure to service (hrs)		
	10°C	20°C	30°C
Light	24-36	12-16	8-12
Designed	72-96	48-72	24-48
Full cure	8 days	5-7 days	5 days

- ① **Substrate:**
- ② **Primer:**  
FasTop Multi Primer
- ③ **Primer (optional):**  
FasTop Multi Primer
- ④ **Screed:**  
FasTop Multi SL23

### BENEFITS

- High chemical resistance
- Resistance to hot water
- Self-sealing
- Extremely hard wearing
- Food safe and non-taint (HACCP and Campden BRI approved)
- Non dusting
- Matt finish

### SCOPE OF USE

- Food manufacture and processing
- Brewing and beverage
- Dairies
- Commercial kitchens
- Pharmaceutical and chemical plant processing
- Abattoirs and meat processing facilities
- Heavy duty plant and traffic areas

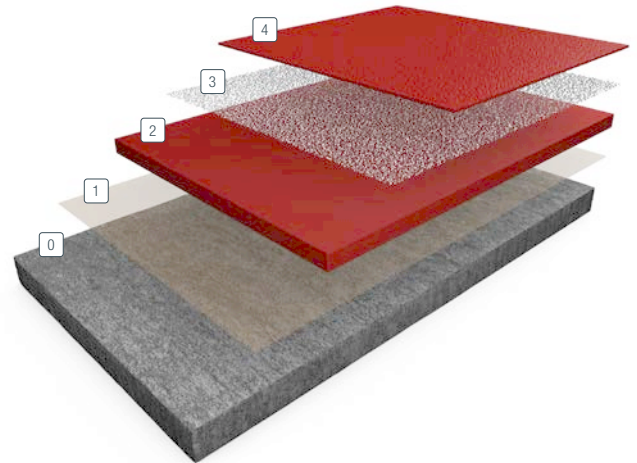
### TYPICAL PHYSICAL PROPERTIES

Hardness @ 24 hours, Shore D	BS ISO 7619-1:2010	82
Abrasion resistance	BS EN 13892-5:2003	AR 0.5
Compressive strength	BS EN ISO 604:2003	43 MPa
Tensile strength	BS EN ISO 527-2:2012	7 N/mm <sup>2</sup>
Flexural strength	BS EN ISO 178+A1:2013	26 N/mm <sup>2</sup>
Bond strength	BS EN 13892-8:2002	>3 N/mm <sup>2</sup> (substrate failure)
Impact resistance	EN ISO 6272	>4
Temperature resistance	Tolerant of temperatures up to 80°C at 3 mm	
Chemical resistance	Excellent	
Reaction to fire	BS EN 13501-1:2018	BFL – s1
UV stable	No	
FerFa class	Class 5	
System thickness	3 mm	
CE Marked screeds	BS EN 13813:2002	

# FASTOP™ DP

## POLYURETHANE CEMENT TEXTURED FLOOR SCREED SYSTEM

FasTop DP is a heavy duty polyurethane cement screed designed to create uniform non-slip finishes whilst providing excellent thermal shock resistance for a variety of industrial environments. FasTop Multi DP is laid between 5–7 mm and broadcast with a choice of three aggregates to give a non-slip finish in areas that are wet and/or exposed to greases and oils.



Traffic	Cure to service (hrs)		
	10°C	20°C	30°C
Light	24–36	12–16	8–12
Designed	72–96	48–72	24–48
Full cure	8 days	5–7 days	5 days

- 0 **Substrate:**
- 1 **Primer (optional):**  
FasTop Multi Primer
- 2 **Screed:**  
FasTop Multi DP
- 3 **Aggregate:**  
Silica sand
- 4 **Seal coat:**  
FasTop Multi T150

### BENEFITS

- High chemical resistance
- Slip resistant texture
- Resistance to hot water
- Self-sealing
- Extremely hard wearing
- Non dusting
- Matt finish
- Food safe and non-taint (Campden BRI approved)

### SCOPE OF USE

- Food manufacture and processing
- Brewing and beverage
- Dairies
- Commercial kitchens
- Pharmaceutical and chemical plant processing
- Abattoirs and meat processing facilities
- Heavy duty plant and traffic areas

### TYPICAL PHYSICAL PROPERTIES

Hardness @ 24 hours, Shore D	BS ISO 7619-1:2010	80
Abrasion resistance	BS EN 13892-4:2002	AR 4
Compressive strength	BS EN 31892-2:2002	34.6 MPa
Tensile strength	BS EN 13892-2:2002	2.4 N/mm <sup>2</sup>
Flexural strength	BS 6319-7:1985	5.8 N/mm <sup>2</sup>
Bond strength	BS EN 13892-8:2002	>2.8 N/mm <sup>2</sup> (substrate failure)
Impact resistance	BS EN ISO 6272-1:2011	>4
Temperature resistance	Tolerant of temperatures up to 90°C at 5 mm	
Chemical resistance	Excellent	
Reaction to fire	BS EN 13501-1:2018	B <sub>FL</sub> – s1
UV stable	No	
FerFa class	Class 7	
System thickness	6–8 mm	

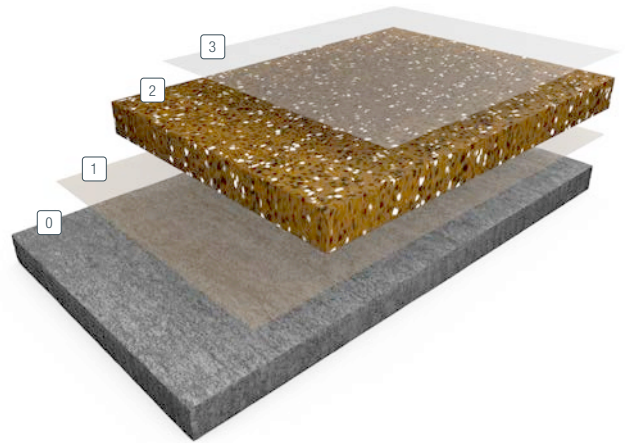
\*\*Do not splash, clean, wash or treat the resin flooring with water or any other chemicals until full cure is achieved as it may affect the surface quality and performance.



# FASTOP™ TERRAZZO

## DECORATIVE POLYURETHANE CEMENT TERRAZZO FLOOR SCREED SYSTEM

FasTop Terrazzo is a decorative polyurethane cement terrazzo screed for industrial floors. A heavy duty impervious and attractive floor is achieved with grinding, polishing and sealing the surface which exposes the decorative aggregates. Processes and any spillages can be easily cleaned to maintain the highest standards where there is high wear and an aesthetic requirement for tough seamless flooring.



Traffic	Cure to service (hrs)		
	10°C	20°C	30°C
Light	24-36	12-16	8-12
Designed	72-96	48-72	24-48
Full cure	8 days	Up to 7 days	5 days

0 Substrate:

1 Primer:  
FasTop Multi Primer

2 Screed:  
FasTop Multi Terrazzo

3 Seal Coat:  
Resupen WB Clear  
Std/Matt

### BENEFITS

- Very hard wearing and durable
- Decorative finish
- Varied decorative colour options
- Excellent abrasion and impact resistance
- Good chemical resistance
- Designed for easy to clean and smooth surfaces

### SCOPE OF USE

- Seamless decorative finish for buildings
- Food factories
- Retail units
- Pharmaceutical areas
- Toilets and washrooms
- Engineering facilities
- Reception areas
- Production areas

### TYPICAL PHYSICAL PROPERTIES

Hardness @ 24 hours, Shore D	BS ISO 7619-1:2010	72
Abrasion resistance	BS EN 13892-4:2002	AR 1 (Less than 100 microns wear)
Compressive strength	BS EN 13892-2:2002	54 N/mm <sup>2</sup>
Tensile strength	BS 6319-7:1985	3.5 N/mm <sup>2</sup>
Flexural strength	BS EN 13892-2:2002	0.5 N/mm <sup>2</sup>
Bond strength	BS EN 13892-8:2002	>3 N/mm <sup>2</sup> (substrate failure)
Impact resistance	BS EN ISO 6272-1:2011	>4
Temperature resistance	Tolerant of temperatures up to 120°C at 9 mm	
Chemical resistance	Good	
Reaction to fire	BS EN 13501-1:2018	BFL – s1
UV stable	No	
FerFa class	Class 8	
System thickness	9 mm	

\*\*Do not splash, clean, wash or treat the resin flooring with water or any other chemicals until full cure is achieved as it may affect the surface quality and performance.

# FASTOP

## ANCILLARY PRODUCTS

### FASTOP MULTI WR COVING SYSTEM

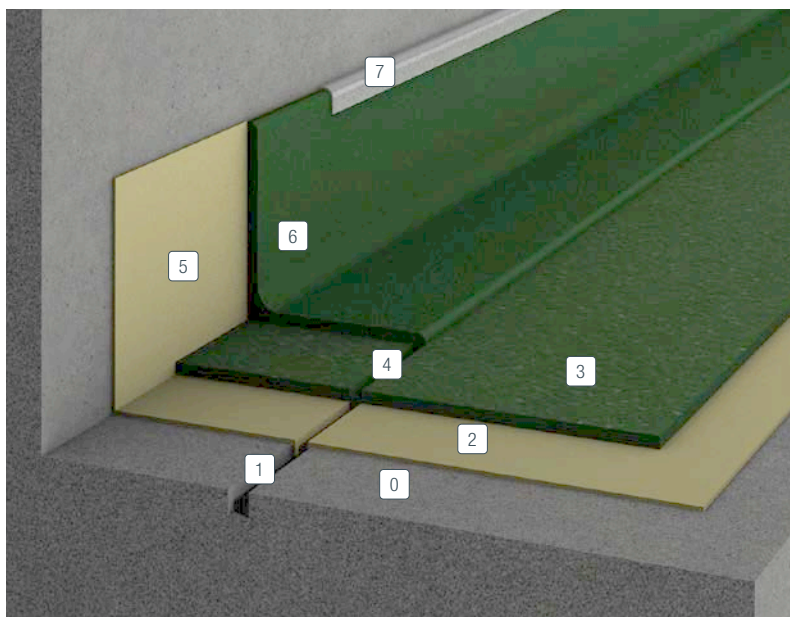
The use of coved skirting's around food factory floors is standard practice to create a tanked resin system to enhance the washing down of areas for maximum hygienic standards. This enables a smooth transition to be made from floor to wall with a permanent finish which can be cleaned and will not harbour dirt and bacterial growth. FasTop resin coving cures to a much harder finish than concrete and provides a smooth finish for a long-term solution which resists hot water and impact. Coving would usually be formed with a radius at a thickness of around 4 mm on the vertical typically to a height of 150 mm though this could be lower or higher as required. The coving would usually be fixed to a stainless steel or plastic 'birds beak' trim at the top which is pre-installed to the wall/substrate.

In food factories, where maximum impact can occur against coving with pallet trucks and fork lift traffic a concrete kerb can be installed to withstand this. FasTop coving can be applied up and over this kerb to complete the resin floor finish with integrated skirtings and upstands creating a 'bunded' hygienic area.

### FASTOP MULTI BU

FasTop BU is a granite re-inforced polyurethane cement infill screed designed to make good holes and indentations in a substrate prior to the application of FasTop self smoothing and FasTop screed systems. FasTop BU can also be used to back fill drainage channels and create falls across floor areas to control the flow of water and other liquids towards drains as required in a production facility. This is often essential in food factories where daily washdowns and regular cleaning are enhanced with correctly set floors promoting maximum hygiene and efficiency.

- 0 **Substrate:**  
Concrete/cementitious screed
- 1 **Anchor joint:**  
Anchor in FasTop RS69/TG69
- 2 **Primer:**  
FasTop Multi Primer
- 3 **Screed:**  
FasTop Multi RS69/TG69
- 4 **Toe-in anchor joint:**  
FasTop Coving 'toe-in' into RS69/TG69
- 5 **Coving primer:**  
Resuprime MVT
- 6 **Coving material:**  
FasTop Multi WR
- 7 **Trim:**  
Brushed steel/plastic



### FASTOP ADD MULTI WR COVING BENEFITS

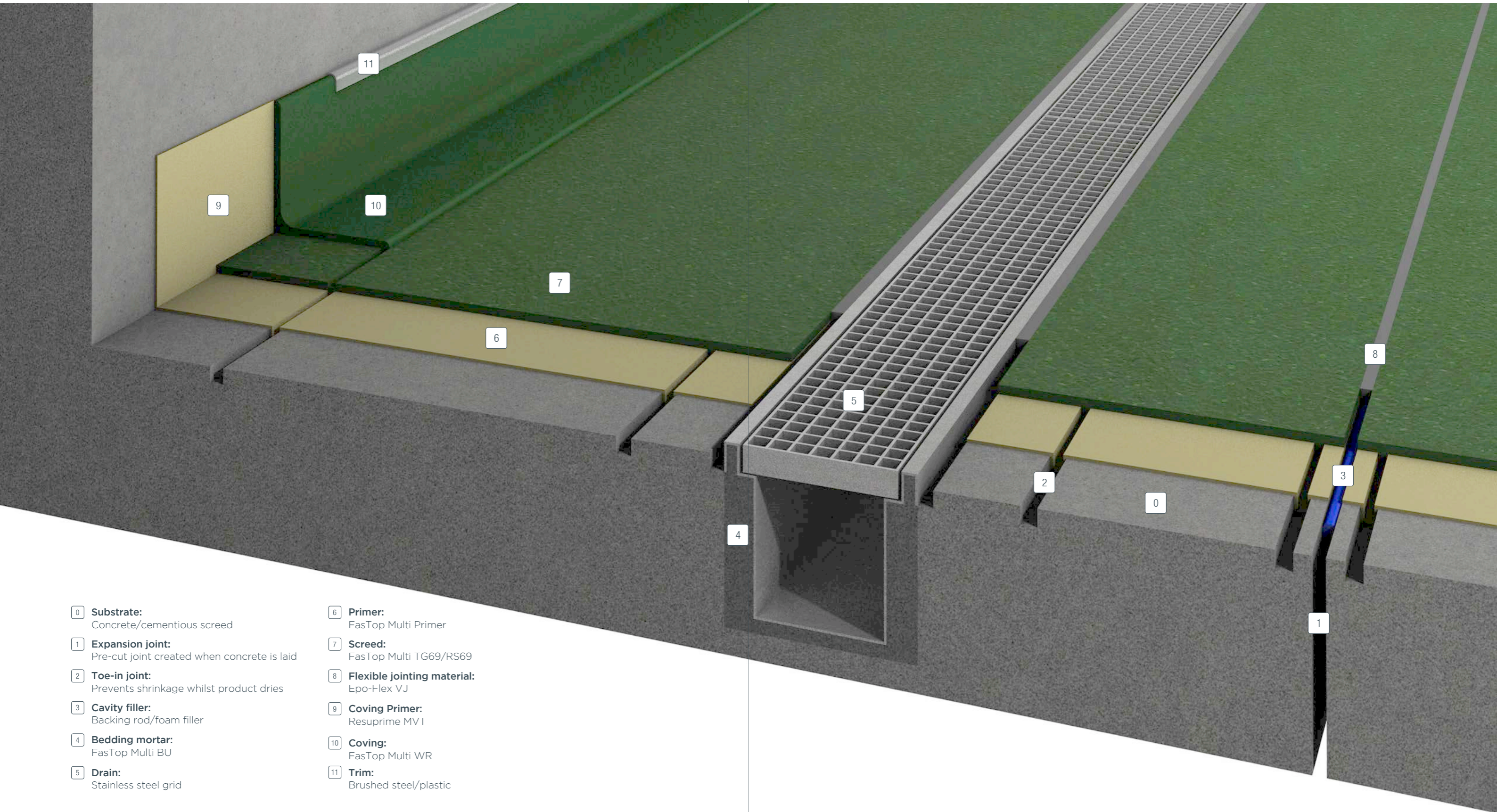
- Suitable for forming radius coves
- Seamless finish
- High chemical resistance
- Resistant to hot water and steam
- Matt finish
- Extremely hard wearing

### FASTOP MULTI BU BENEFITS

- Can be applied from 6 mm to 100 mm
- Fast curing
- Self sealing
- High strength
- Matt finish
- Food safe and non-taint
- Extremely hard wearing

# INSTALLATION

## SCREED FLOORING SYSTEMS



- 0 **Substrate:**  
Concrete/cementitious screed
- 1 **Expansion joint:**  
Pre-cut joint created when concrete is laid
- 2 **Toe-in joint:**  
Prevents shrinkage whilst product dries
- 3 **Cavity filler:**  
Backing rod/foam filler
- 4 **Bedding mortar:**  
FasTop Multi BU
- 5 **Drain:**  
Stainless steel grid
- 6 **Primer:**  
FasTop Multi Primer
- 7 **Screed:**  
FasTop Multi TG69/RS69
- 8 **Flexible jointing material:**  
Epo-Flex VJ
- 9 **Coving Primer:**  
Resuprime MVT
- 10 **Coving:**  
FasTop Multi WR
- 11 **Trim:**  
Brushed steel/plastic

For application guidance please see our range of **FasTop Multi system guides** which can be found on our website, or through contacting your local Sherwin-Williams High Performance Flooring representative.

# COLOUR RANGES

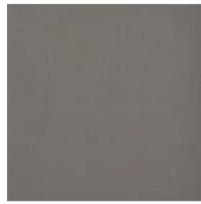
## AVAILABLE COLOURS FOR SELF LEVELLING SCREEDS - FASTOP SL23 AND SL45



Light Grey



Mid Grey



Dark Grey



Black



Buff



Marigold



Orange



Red



Green



Blue

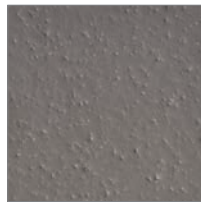
## AVAILABLE COLOURS FOR SCREEDS - FASTOP RS69 AND TG69



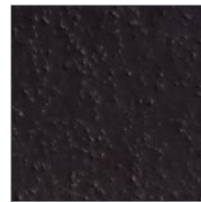
Light Grey



Mid Grey



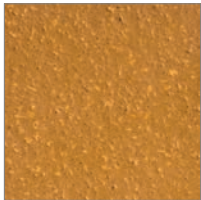
Dark Grey



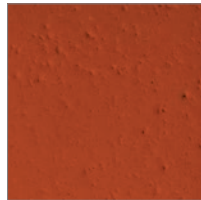
Black



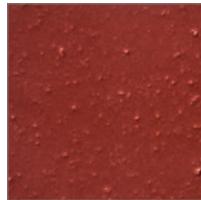
Buff



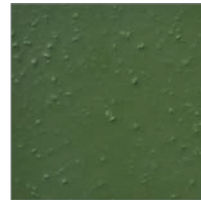
Marigold



Orange



Red

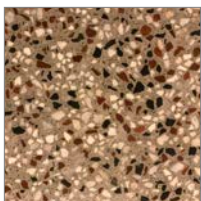


Green

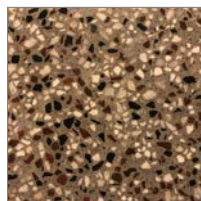


Blue

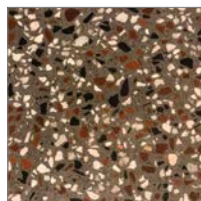
## AVAILABLE COLOURS FOR FASTOP TERRAZZO



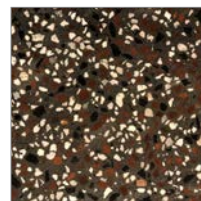
Light Grey



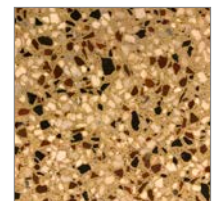
Mid Grey



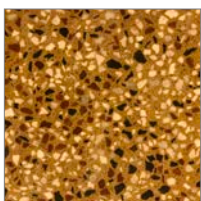
Dark Grey



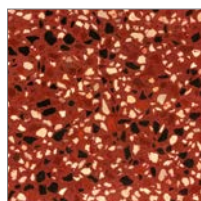
Black



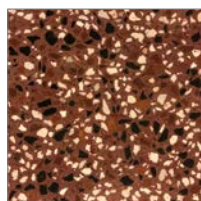
Buff



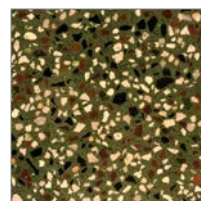
Marigold



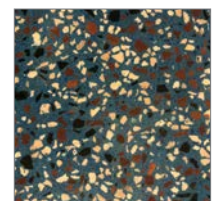
Orange



Red



Green



Blue

# FASTOP™ SYSTEMS

POLYURETHANE CEMENT  
HIGH PERFORMANCE FLOORING

## DESIGNED TO PERFORM

Sherwin-Williams Protective & Marine delivers world-class industry subject matter expertise, unparalleled technical and specification service, and unmatched regional commercial team support to our customers around the globe. Our broad portfolio of high-performance coatings and systems that excel at combating corrosion helps customers achieve smarter, time-tested asset protection. We serve a wide array of markets across our rapidly growing international distribution footprint, including oil and gas, water and wastewater, bridge and highway, steel fabrication, flooring, food and beverage, rail and power, marine and passive fire protection.

**SHERWIN  
WILLIAMS®**

**United Kingdom:**

+44 (0)1204 556420  
flooring.enquiries@sherwin.com

**Scandinavia:**

+45 70213888  
emea.pm.exportsales@sherwin.com

**Italy :**

+39 327 173 2931  
emea.pm.Italy@sherwin.com

**Rest of Europe and Africa:**

+44 (0)1204 556454  
emea.pm.exportsales@sherwin.com

**Middle East:**

+971 4 8840200  
sales.me@sherwin.com

**India:**

+91 9871900878  
pmsales.india@sherwin.com