

**SHERWIN  
WILLIAMS®**

HIGH  
PERFORMANCE  
FLOORING

# FASTOP® SYSTEMS

POLYURETHANE CEMENT  
HIGH PERFORMANCE FLOORING



DESIGNED TO PERFORM

[resinflooring.sherwin.eu](https://resinflooring.sherwin.eu)



# FASTOP<sup>®</sup> SYSTEMS

## POLYURETHANE CEMENT HIGH PERFORMANCE FLOORING

The FasTop polyurethane cement proven formulation has been tried and tested for over 20 years by some of the world's largest organisations. These systems provide hygienic, chemical resistant and slip resistant flooring solutions which are extremely hard wearing, making FasTop the ideal choice for the most demanding environments.

### FASTOP SYSTEM CERTIFICATIONS

FasTop systems are specifically designed for use within food manufacturing, food processing and food service industries. Our tried and tested range of food-safe, anti-slip resin flooring systems comply with strict hygiene and safety standards as stipulated by the HACCP International system (Hazard Analysis and Critical Control Point).

These requirements are specified by authorities such as the Global Food Safety Initiative (GFSI), the Food Standards Agency (FSA) and the European Food Safety Authority (EFSA) to ensure food factories maintain the highest standards of handling and production. The Sherwin-Williams flooring range being HACCP certified performs to these standards for food manufacturing, distilleries, wineries and breweries, dairies, meat processing, bakeries, confectionaries and pet food factories.

FasTop systems are HACCP International and Campden BRI certified as non-taint and odourless.



# FASTOP® MULTI INNOVATIVE POUCH PACKAGING SYSTEM

With its easy to install pouch packaging system, FasTop® Multi systems can be transported to site using less cargo space and leave less waste packaging after installation.

By using FasTop® Multi's pouch packaging, you'll make your next flooring project simpler, as it takes up 37% less space during storage and transport. Unlike traditional metal pails, FasTop® Multi's pouches are flexible and can be easily compacted after installation, resulting in 80% less waste to dispose of once the project is completed.

FeRFA  
Environmental  
Initiative  
Award

WINNER

80% less waste

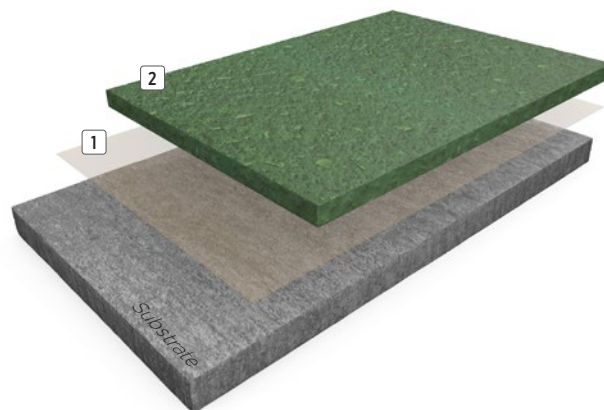
37% less space during storage and transportation  
compared to conventional pails



# FASTOP® TG69

## POLYURETHANE CEMENT FLOOR SCREED SYSTEM

FasTop TG69 is a very heavy duty antimicrobial polyurethane cement floor screed system providing excellent resistance against chemical attack, thermal shock and abrasion. A food grade, non-taint and odourless product, providing slip resistance in wet and dry conditions. When installed at 9 mm thickness the system is resistant to steam cleaning, boiling water and process liquids up to 120°C and also suitable for freezer temperatures down to -40°C.



2 Screed: **FasTop Multi TG69**

1 Primer (optional): **FasTop Multi Primer**

### TYPICAL CURE TIMES

Traffic	10°C	20°C	30°C
Light	24 - 36 hrs	12 - 16 hrs	8 - 12 hrs
Designed	48 - 72 hrs	36 - 48 hrs	24 - 36 hrs
Full cure	8 days	5 - 7 days	5 days

### BENEFITS

- High chemical resistance
- Food safe and non-taint (HACCP and Campden BRI approved)
- Resistance to hot water and steam
- Self-sealing
- Excellent slip resistant finish
- Matt finish system
- Extremely hard wearing
- Non dusting
- Primer not required

### SCOPE OF USE

- Food manufacture and processing
- Brewing and beverage
- Dairies
- Commercial kitchens
- Pharmaceutical processing
- Chemical plant processing
- Abattoirs and meat processing facilities
- Heavy duty plant and traffic areas
- Kennels and cattery

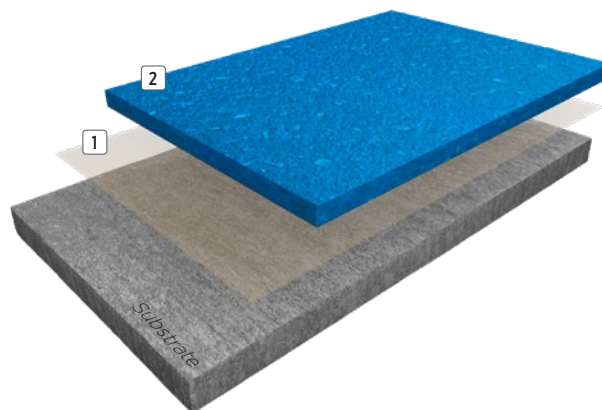
### TYPICAL PHYSICAL PROPERTIES

Hardness @ 24 hours, Shore D BS ISO 7619-1:2010	72
Abrasion resistance EN 13892-5	AR 2
Compressive strength EN13892-2	52.9 N/mm <sup>2</sup>
Tensile strength BS 6319-7	1.9 N/mm <sup>2</sup>
Flexural strength EN 13892-2	5.6 N/mm <sup>2</sup>
Bond strength EN13813	>3 N/mm <sup>2</sup> (substrate failure)
Impact resistance EN ISO 6272	>4
Temperature resistance	Tolerant of temperatures up to 120°C at 9 mm
Chemical resistance	Excellent
Reaction to fire EN13501-1	B <sub>FL</sub> - s1
FeRFA type	8
System thickness	6-9 mm
CE Marked screeds BS EN 13813:2002	

# FASTOP® RS69

## POLYURETHANE CEMENT RESIN RICH FLOOR SCREED SYSTEM

FasTop RS69 is a heavy duty resin rich antimicrobial polyurethane cement floor screed system providing superb resistance against chemical attack, thermal shock and abrasion. A food grade non-taint and odourless product, providing slip resistance in wet and dry conditions. For fast installation FasTop RS69 can be applied by rake, trowel or screedbox as a resin rich system. Resistant to steam cleaning, boiling water and process liquids up to 120°C and suitable for freezer temperatures down to -40°C at 9 mm thickness.



### TYPICAL CURE TIMES

Traffic	10°C	20°C	30°C
Light	24 - 36 hrs	12 - 16 hrs	8 - 12 hrs
Designed	48 - 72 hrs	36 - 48 hrs	24 - 36 hrs
Full cure	8 days	5 - 7 days	5 days

2 Screed: **FasTop Multi RS69**

1 Primer (optional): **FasTop Multi Primer**

### BENEFITS

- High chemical resistance
- Resin rich system
- Resistance to hot water and steam
- Self sealing
- Excellent slip resistant finish
- Matt finish system
- Extremely hard wearing
- Non dusting
- Food safe and non-taint (HACCP and Campden BRI approved)

### SCOPE OF USE

- Food manufacture and processing
- Brewing and beverage
- Dairies
- Commercial kitchens
- Pharmaceutical processing
- Chemical plant processing
- Abattoirs and meat processing facilities
- Heavy duty plant and traffic areas
- Kennels and cattery

### TYPICAL PHYSICAL PROPERTIES

Hardness @ 24 hours, Shore D BS ISO 7619-1:2010	72
Abrasion resistance EN 13892-5	AR 1
Compressive strength EN13892-2	54 N/mm <sup>2</sup>
Tensile strength BS 6319-7	3.5 N/mm <sup>2</sup>
Flexural strength EN 13892-2	6.3 N/mm <sup>2</sup>
Bond strength EN13813	>3 N/mm <sup>2</sup> (substrate failure)
Impact resistance EN ISO 6272	>4
Temperature resistance	Tolerant of temperatures up to 120°C at 9 mm
Chemical resistance	Excellent
Reaction to fire	B <sub>FL</sub> - s1
FeRFA type	8
System thickness	6-9 mm
CE Marked screeds BS EN 13813:2002	

# FASTOP® SL45

## POLYURETHANE CEMENT SELF-LEVELLING FLOOR SCREED SYSTEM

FasTop SL45 is a 4-5 mm thick antimicrobial polyurethane cement self-levelling, smooth finish, resin floor system which provides a heavy duty finish with superb resistance against chemical attack, hot water and abrasion. FasTop SL45 is a food grade, non-taint odourless product and provides a smooth profile making it ideal for food and beverage production areas where maximum hygienic standards are required. FasTop SL45 is also suitable for freezer temperatures down to -25°C.

### TYPICAL CURE TIMES

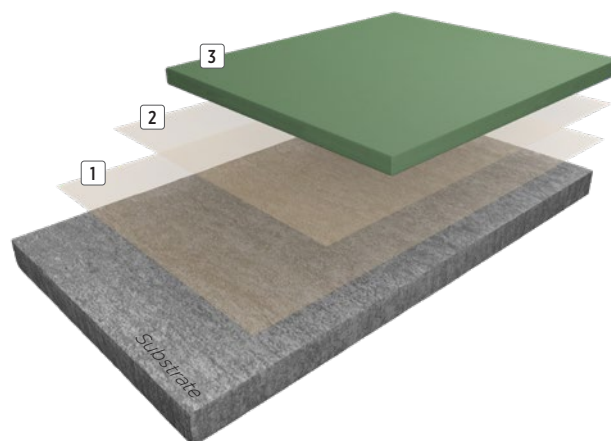
Traffic	10°C	20°C	30°C
Light	24 - 36 hrs	12 - 16 hrs	8 - 12 hrs
Designed	72 - 96 hrs	48 - 72 hrs	24 - 48 hrs
Full cure	8 days	5 - 7 days	5 days

### BENEFITS

- High chemical resistance
- Resistance to hot water
- Self-sealing
- Extremely hard wearing
- Food safe and non-taint (HACCP and Campden BRI approved)
- Non dusting
- Matt finish
- Smooth easy to clean finish

### SCOPE OF USE

- Food manufacture and processing
- Brewing and beverage
- Dairies
- Commercial kitchens
- Pharmaceutical processing
- Chemical plant processing
- Abattoirs and meat processing facilities
- Heavy duty plant and traffic areas



3 Screed: **FasTop Multi SL45**

2 Primer (optional): **FasTop Multi Primer**

1 Primer: **FasTop Multi Primer**

### TYPICAL PHYSICAL PROPERTIES

Hardness @ 24 hours, Shore D BS ISO 7619-1:2010	80
Abrasion resistance BS EN 13892-5:2003	AR 0.5
Compressive strength BS EN ISO 604:2003	54 MPa
Tensile strength BS EN ISO 527-2:2012	7 N/mm <sup>2</sup>
Flexural strength BS EN ISO 178+A1:2013	14 N/mm <sup>2</sup>
Bond strength BS EN 13892-8:2002	>3 N/mm <sup>2</sup> (substrate failure)
Impact resistance EN ISO 6272	>4
Temperature resistance	Tolerant of temperatures up to 90°C at 5 mm
Chemical resistance	Excellent
Reaction to fire BS EN 13501-1:2018	B <sub>FL</sub> - s1
FeRFA type	7
System thickness	4-5 mm
CE Marked screeds BS EN 13813:2002	

# FASTOP® SL23

## POLYURETHANE CEMENT SELF-LEVELLING FLOOR SCREED SYSTEM

FasTop SL23 is a 3 mm thick antimicrobial polyurethane cement self-levelling, smooth finish, resin floor system which provides a heavy duty finish with superb resistance against chemical attack, hot water and abrasion. FasTop SL23 is a food grade, non-taint and odourless product making it ideal for food and beverage production areas where a smooth finish is required for maximum hygienic standards. FasTop SL23 is also suitable for freezer temperatures down to -20°C.

### TYPICAL CURE TIMES

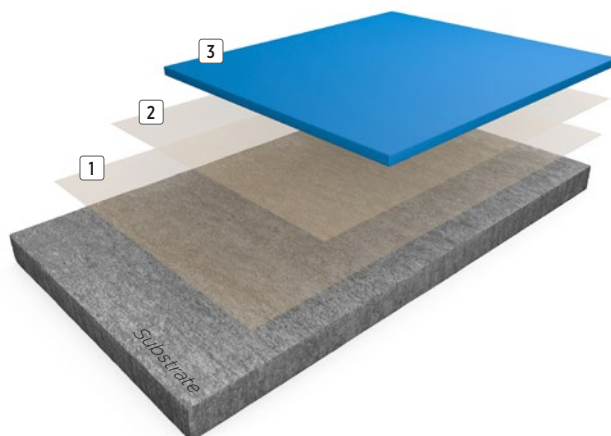
Traffic	10°C	20°C	30°C
Light	24 - 36 hrs	12 - 16 hrs	8 - 12 hrs
Designed	72 - 96 hrs	48 - 72 hrs	24 - 48 hrs
Full cure	8 days	5 - 7 days	5 days

### BENEFITS

- High chemical resistance
- Resistance to hot water
- Self-sealing
- Extremely hard wearing
- Food safe and non-taint (HACCP and Campden BRI approved)
- Non dusting
- Matt finish
- Smooth easy to clean finish

### SCOPE OF USE

- Food manufacture and processing
- Brewing and beverage
- Dairies
- Bakeries
- Commercial kitchens
- Pharmaceutical and chemical plant processing
- Abattoirs and meat processing facilities
- Heavy duty plant and traffic areas



- 3 Screed: **FasTop Multi SL23**
- 2 Primer (optional): **FasTop Multi Primer**
- 1 Primer: **FasTop Multi Primer**

### TYPICAL PHYSICAL PROPERTIES

Hardness @ 24 hours, Shore D BS ISO 7619-1:2010	82
Abrasion resistance BS EN 13892-5:2003	AR 0.5
Compressive strength BS EN ISO 604:2003	43 MPa
Tensile strength BS EN ISO 527-2:2012	7 N/mm <sup>2</sup>
Flexural strength BS EN ISO 178+A1:2013	26 N/mm <sup>2</sup>
Bond strength BS EN 13892-8:2002	>3 N/mm <sup>2</sup> (substrate failure)
Impact resistance EN ISO 6272	>4
Temperature resistance	Tolerant of temperatures up to 80°C at 3 mm
Chemical resistance	Excellent
Reaction to fire BS EN 13501-1:2018	B <sub>FL</sub> - s1
FeRFA type	5
System thickness	3 mm
CE Marked screeds BS EN 13813:2002	

# FASTOP® DP

## POLYURETHANE CEMENT TEXTURED FLOOR SCREED SYSTEM

FasTop DP is a heavy duty polyurethane cement screed designed to create uniform anti-slip finishes whilst providing excellent thermal shock resistance for a variety of industrial environments. FasTop Multi DP can be laid between 4-7 mm and broadcast with a choice of three aggregates to give an anti-slip finish in areas that are wet and/or exposed to greases and oils.

### TYPICAL CURE TIMES

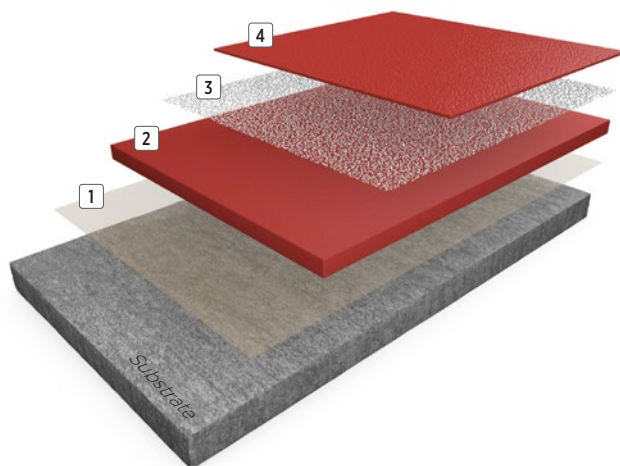
Traffic	10°C	20°C	30°C
Light	24 - 36 hrs	12 - 16 hrs	8 - 12 hrs
Designed	72 - 96 hrs	48 - 72 hrs	24 - 48 hrs
Full cure	8 days	5 - 7 days	5 days

### BENEFITS

- High chemical resistance
- Slip resistant texture
- Resistance to hot water
- Self-sealing
- Extremely hard wearing
- Non dusting
- Matt finish
- Food safe and non-taint (Campden BRI approved)

### SCOPE OF USE

- Food manufacture and processing
- Brewing and beverage
- Dairies
- Commercial kitchens
- Pharmaceutical processing
- Chemical plant processing
- Abattoirs and meat processing facilities
- Heavy duty plant and traffic areas



- 4 Seal coat: **FasTop Multi T150**
- 3 Aggregate: **Quartz sand, Aluminium oxide, or Bauxite**
- 2 Screed: **FasTop Multi DP**
- 1 Primer (optional): **FasTop Multi Primer**

### TYPICAL PHYSICAL PROPERTIES

Hardness @ 24 hours, Shore D BS ISO 7619-1:2010	80
Abrasion resistance BS EN 13892-4:2002	AR 4
Compressive strength BS EN 31892-2:2002	34.6 MPa
Tensile strength BS EN 13892-2:2002	2.4 N/mm <sup>2</sup>
Flexural strength BS 6319-7:1985	5.8 N/mm <sup>2</sup>
Bond strength BS EN 13892-8:2002	>2.8 N/mm <sup>2</sup> (substrate failure)
Impact resistance BS EN ISO 6272-1:2011	>4
Temperature resistance	Tolerant of temperatures up to 90°C at 5 mm
Chemical resistance	Excellent
Reaction to fire BS EN 13501-1:2018	B <sub>FL</sub> - s1
FeRFA type	7
System thickness	5-9 mm

# FASTOP® TERRAZZO

## DECORATIVE POLYURETHANE CEMENT TERRAZZO FLOOR SCREED SYSTEM

FasTop Terrazzo is a decorative polyurethane cement terrazzo screed for industrial floors. A heavy duty impervious and attractive floor is achieved with grinding, polishing and sealing the surface which exposes the decorative aggregates. Processes and any spillages can be easily cleaned to maintain the highest standards where there is high wear and an aesthetic requirement for tough seamless flooring.

### TYPICAL CURE TIMES

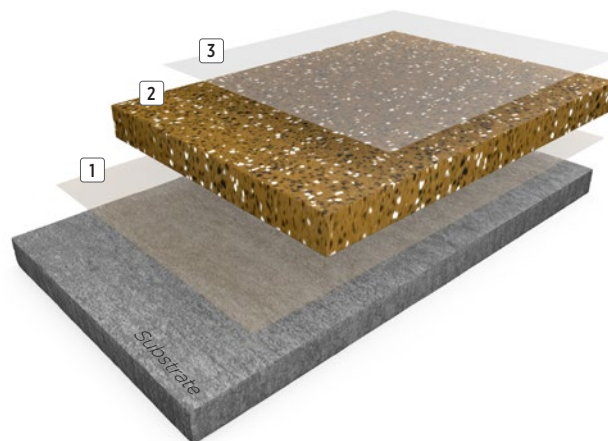
Traffic	10°C	20°C	30°C
Light	24 - 36 hrs	12 - 16 hrs	8 - 12 hrs
Designed	72 - 96 hrs	48 - 72 hrs	24 - 48 hrs
Full cure	8 days	Up to 7 days	5 days

### BENEFITS

- Very hard wearing and durable
- Decorative finish
- Varied decorative colour options
- Excellent abrasion and impact resistance
- Good chemical resistance
- Designed for easy to clean and smooth surfaces

### SCOPE OF USE

- Seamless decorative finish for buildings
- Food factories
- Pharmaceutical areas
- Toilets and washrooms
- Workshop
- Engineering facilities
- Heavy duty manufacturing
- Production areas



3 Seal coat: **Resupen WB Clear Std/Matt**

2 Screed: **FasTop Multi Terrazzo**

1 Primer: **FasTop Multi Primer**

### TYPICAL PHYSICAL PROPERTIES

Hardness @ 24 hours, Shore D BS ISO 7619-1:2010	72
Abrasion resistance BS EN 13892-4:2002	AR 1 (Less than 100 microns wear)
Compressive strength BS EN 13892-2:2002	54 N/mm <sup>2</sup>
Tensile strength BS 6319-7:1985	3.5 N/mm <sup>2</sup>
Flexural strength BS EN 13892-2:2002	6.3 N/mm <sup>2</sup>
Bond strength BS EN 13892-8:2002	>3 N/mm <sup>2</sup> (substrate failure)
Impact resistance BS EN ISO 6272-1:2011	>4
Temperature resistance	Tolerant of temperatures up to 120°C at 9 mm
Chemical resistance	Good
Reaction to fire BS EN 13501-1:2018	B <sub>FL</sub> - s1
FeRFA type	8
System thickness	9 mm

# FASTOP® TOPCOAT

## POLYURETHANE CEMENT TEXTURED FLOOR COATING SYSTEM

FasTop Topcoat is a heavy duty floor coating system with a light anti-slip textured finish installed at a thickness around 0.5mm. It is applied by roller, brush or squeegee depending on the requirements and gives a hygienic finish that can be used for new concrete screeds as well as refreshing existing resin systems and existing cementitious and concrete substrates. The FasTop Multi Primer and FasTop Multi T150 top coat can be applied at smaller coverage rates if a greater system thickness is required.

### TYPICAL CURE TIMES

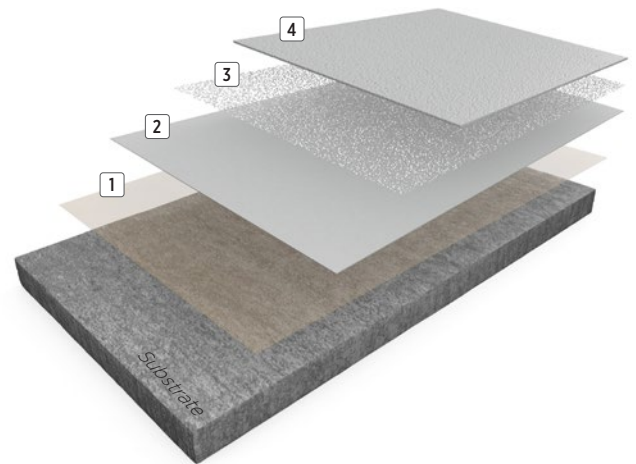
Traffic	10°C	20°C	30°C
Light	24 - 36 hrs	12 - 16 hrs	8 - 12 hrs
Designed	72 - 96 hrs	48 - 72 hrs	24 - 48 hrs
Full cure	8 days	5 - 7 days	5 days

### BENEFITS

- High chemical resistance
- Slip resistant texture
- Resistance to hot water
- Hard wearing
- Non dusting
- Matt finish
- Food safe and non-taint (HACCP and Campden BRI approved)

### SCOPE OF USE

- Food manufacture and processing
- Brewing and beverage
- Dairies
- Manufacturing areas
- Pharmaceutical processing
- Chemical plant processing
- Workshops
- Light duty traffic



- 4 Top coat: **FasTop Multi T150**
- 3 Aggregate (optional): **Quartz sand**
- 2 Base coat: **FasTop Multi T150**
- 1 Primer: **FasTop Multi Primer**

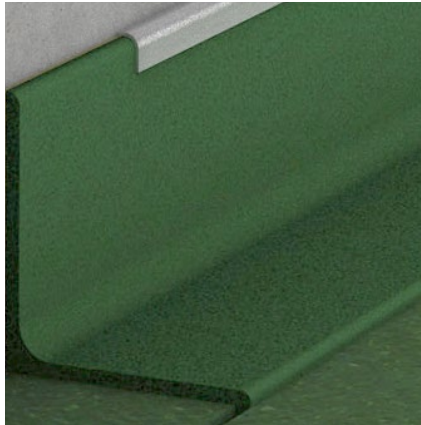
### TYPICAL PHYSICAL PROPERTIES

Abrasion resistance BS 8204-2:2003+A3:2011	225mg loss per 1000 cycles
Tensile strength ASTM D 638	17.1 N/mm <sup>2</sup>
Bond strength BS EN 13892-8:2002	>3 N/mm <sup>2</sup> (substrate failure)
Impact resistance BS EN ISO 6272-1:2011	>4
Temperature resistance	Tolerant of temperatures up to 60°C
Chemical resistance	Excellent
Reaction to fire BS EN 13501-1:2018	B <sub>fl</sub> - s1
FeRFA type	3
System thickness	0.5 mm

# ANCILLARY PRODUCTS

## FASTOP® MULTI WR COVING SYSTEM

Coved resin skirting is commonly installed in food and beverage facilities to ease cleaning and maximise hygiene standards. This enables a smooth transition to be made from floor to wall with a permanent finish which can be cleaned and will not harbour dirt and bacterial growth. FasTop resin coving cures to a much harder finish than concrete and provides a smooth finish for a long-term solution which resists hot water and impact. Coving would usually be formed with a radius at a thickness of around 4 mm on the vertical typically to a height of 150 mm though this could be lower or higher as required. The coving would usually be fixed to a stainless steel or plastic 'birds beak' trim at the top which is pre-installed to the wall/substrate.

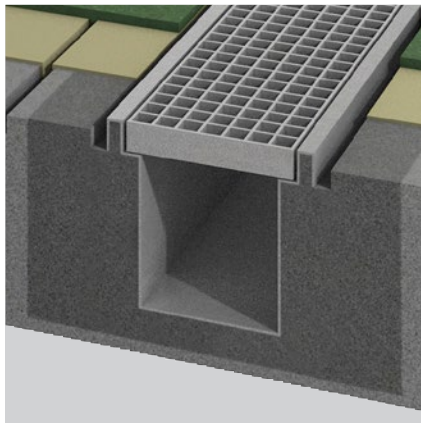


In food factories, where maximum impact can occur against coving with pallet trucks and fork lift traffic a concrete kerb can be installed to withstand this. FasTop coving can be applied up and over this kerb to complete the resin floor finish with integrated skirtings and upstands creating a seamless hygienic area.

- Suitable for forming radius coves
- Seamless finish
- High chemical resistance
- Resistant to hot water and steam
- Matt finish
- Extremely hard wearing

## FASTOP® MULTI BU

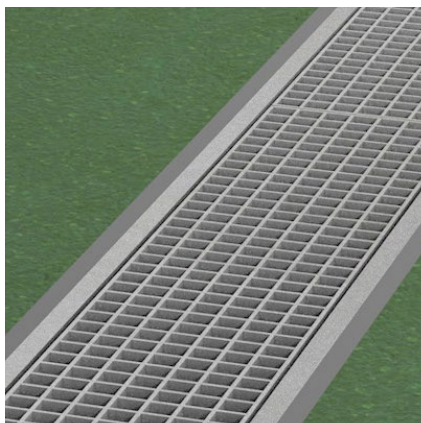
FasTop BU is a granite reinforced polyurethane cement infill screed designed to make good holes in a substrate prior to the application of FasTop self smoothing and FasTop screed systems. FasTop BU can also be used to back fill drainage channels and create falls across floor areas to control the flow of water and other liquids towards drains as required in a production facility. This is often essential in food factories where daily washdowns and regular cleaning are enhanced with correctly set floors promoting maximum hygiene and efficiency.



- Can be applied from 6 mm to 60 mm
- Fast curing and self sealing
- High strength and extremely hard wearing
- Matt finish
- Food safe
- Moisture tolerant
- Can be laid to falls or used to create ramps

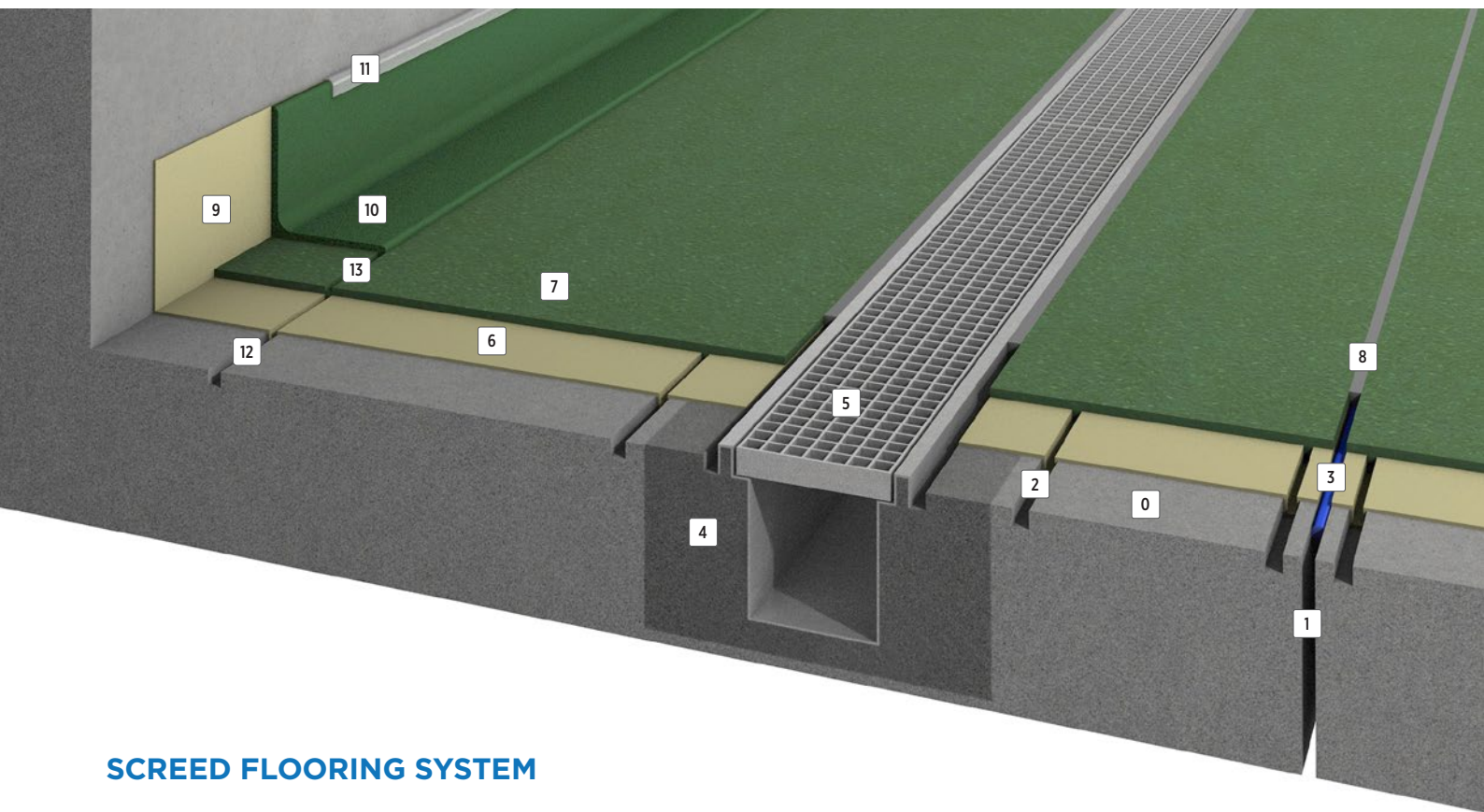
## EPO-FLEX™ VJ

Epo-Flex VJ is a high performance flexibilized two component epoxy joint sealant. It is a thixotropic compound which is designed to accommodate low level movement in vertical as well as horizontal joints. Epo-Flex VJ is specifically suitable for stable expansion jointing in self-smoothing and screed floor coating systems.



- Tough but flexible
- Good adhesion
- Accommodates movement and maintains a seamless finish
- Ease of cleaning
- Chemical resistance

# FASTOP® INSTALLATION



## SCREED FLOORING SYSTEM

- 0 Substrate:  
Concrete/cementitious screed
- 1 Expansion joint:  
Pre-cut joint created when concrete is laid
- 2 Toe-in joint:  
Prevents shrinkage whilst product dries
- 3 Cavity filler:  
Backing rod/foam filler
- 4 Bedding mortar:  
**FasTop Multi BU onto Fastop Multi Primer**
- 5 Drain:  
Stainless steel channel cover
- 6 Primer:  
**FasTop Multi Primer**
- 7 Screed:  
**FasTop Multi TG69**
- 8 Flexible jointing material:  
**Epo-Flex™ VJ**
- 9 Coving Primer:  
**Fastop Multi Primer**
- 10 Coving:  
**FasTop Multi WR sealed with FasTop Multi T150**
- 11 Trim
- 12 Anchor joint:  
**Anchor in FasTop Multi TG69**
- 13 Toe-in anchor joint:  
**FasTop Multi WR 'toe-in' into FasTop Multi TG69**

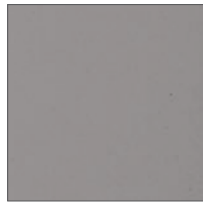
For application guidance please see our range of FasTop system guides which can be found on our website, or through contacting your local Sherwin-Williams High Performance Flooring representative.

# COLOUR RANGES

## Colours for self levelling screeds - FasTop SL23 and SL45



Light Grey



Mid Grey



Dark Grey



Black



Buff



Marigold



Orange



Red



Green



Blue

## Colours for screeds - FasTop RS69 AND TG69



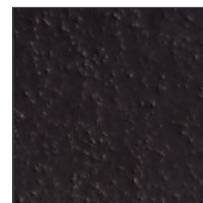
Light Grey



Mid Grey



Dark Grey



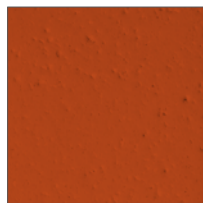
Black



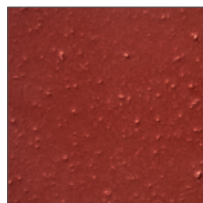
Buff



Marigold



Orange



Red

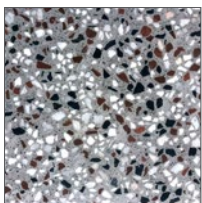


Green

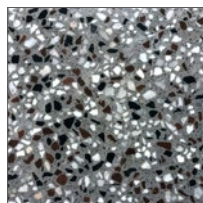


Blue

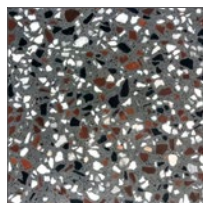
## Colours for FasTop Terrazzo



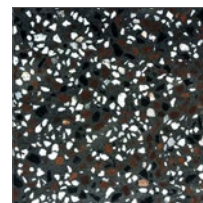
Light Grey



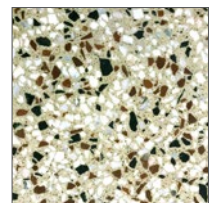
Mid Grey



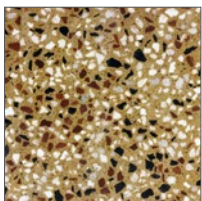
Dark Grey



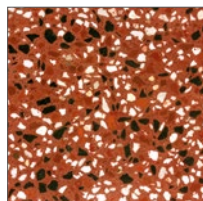
Black



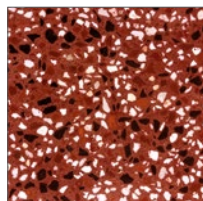
Buff



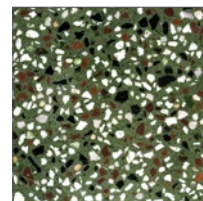
Marigold



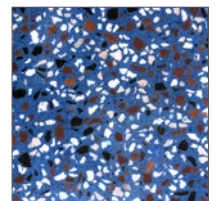
Orange



Red



Green



Blue

# FASTOP® MULTI PACKAGING OPTIONS



**FasTop Multi Base (Part A):** a universal unpigmented base that can be used with a number of the FasTop systems.



**FasTop Multi Hardener (Part B):** a universal hardener that can be used with a number of FasTop systems.



**FasTop Multi Aggregate (Part C):** Unique aggregate formulations which provide the correct pack make up for each system.



**FasTop Multi Colour (Part D):** coloured pigment is contained in a separated colour pouch which can be added to the FasTop Multi unpigmented base.

FasTop Multi Base (Part A) and FasTop Multi Hardener (Part B) half size pouches are used for FasTop Multi WR coving. A full size Base and half size Hardener are used for FasTop Multi BU and for FasTop Multi Primer.

Component	Packaging type	Part	Weight (kg)	FasTop Multi												
				TG69	RS69	SL45	SL23	DP	Terrazzo	T150	BU	TR1000	WR	Primer		
Base pouch	Pouch	A	2.32	■	■	■	■	■	■	■	■	■				
Hardener pouch		B	2.22	■	■	■	■	■	■	■	■					
Half size (base pouch)		A	1.16										■	■		
Half size (hardener pouch)		B	1.11										■	■	■	
Colour pouch*		D	0.45	■	■	■	■	■	■	■		■	■			
Aggregate TG69	Bag	C	25.1	■												
Aggregate RS69		C	21.1		■											
Aggregate SL45		C	14.1			■										
Aggregate SL23		C	11.1				■									
Aggregate DP		C	17.1					■								
Aggregate Terrazzo		C	21.1						■							
Aggregate T150		C	3.1							■						
Aggregate BU		C	25.1								■					
Aggregate TR1000		C	25									■				
Aggregate WR		C	22.4										■			
<b>Total unit weight (kg)</b>				<b>30.1</b>	<b>26.1</b>	<b>19.1</b>	<b>16.1</b>	<b>22.1</b>	<b>26.1</b>	<b>8.1</b>	<b>28.5</b>	<b>27.72</b>	<b>25.1</b>	<b>6.5</b>		

**Note:** FasTop Screeds/Self Levellers are also available in 3-pack formats with pigmented base components for special colours and large projects where required.  
 \* Colours - Light Grey, Mid Grey, Dark Grey, Red, Blue, Green, Buff, Marigold, Black, Orange.

# SYSTEM INFORMATION

FasTop Multi											
	TG69	RS69	SL45	SL23	DP	Terrazzo	T150	BU**	TR1000*	WR*	Primer***
<b>Description</b>	Trowel applied textured heavy duty screed	Resin rich textured screed applied by rake and trowel	Self smoothing screed applied by trowel and spike roller	Self smoothing screed applied by trowel and spike roller	Heavy textured trowel applied screed with aggregate scatter	Trowel applied screed with Terrazzo finish after surface grinding	Roller and brush applied coating for sealing where required	Bulk screed for levelling substrates and filling holes etc.	Bulk screed underlayment for levelling substrates up to a 150mm thickness	Screed render for forming radius coving and skirtings	Primer for sealing substrates for FasTop systems
<b>System thickness</b>	6-9 mm	6-9 mm	4-5 mm	2-3 mm	5-6 mm	8-10 mm	150-200 um	6-100 mm	5-150 mm	4-9 mm	150-200 mm
<b>Pack size</b>	30.1 kg	26.1 kg	19.1 kg	16.1 kg	22.1 kg	26.1 kg	8.1 kg	28.5 kg	27.27 kg	25.1 kg	6.5 kg
<b>VOC content</b>	9 g/l	9 g/l	13 g/l	14 g/l	12 g/l	9 g/l	22 g/l	5 g/l	9 g/l	5 g/l	22 g/l
<b>Cure time to light traffic</b>	12-16 hrs										
<b>Cure time to designed traffic</b>	48 hrs										
<b>Full cure (days)</b>	5-7 days										
<b>Coverage rates</b>	2.35 m <sup>2</sup> per unit at 6 mm 12.76 kg per m <sup>2</sup> at 6 mm	2 m <sup>2</sup> per unit at 6 mm 13 kg per m <sup>2</sup> at 6 mm	1.9 m <sup>2</sup> per unit at 5 mm 10 kg per m <sup>2</sup> at 5 mm	2.8 m <sup>2</sup> per unit at 3 mm 5.71 kg per m <sup>2</sup> at 3 mm	2 m <sup>2</sup> per unit at 5 mm 11 kg per m <sup>2</sup> at 5 mm	1.35 m <sup>2</sup> per unit at 9 mm 19.25 kg per m <sup>2</sup> at 9 mm	27 m <sup>2</sup> per unit at 200 um 0.28 kg per m <sup>2</sup> at 200 um	1.1 m <sup>2</sup> per unit at 10 mm 22.72 kg per m <sup>2</sup> at 10mm	1.3 m <sup>2</sup> per unit at 10 mm 21.32 kg per m <sup>2</sup> at 10 mm	8.3 LM Radius cover per unit at 150 per mm high with a 100 mm base	23 m <sup>2</sup> per unit at 200 um 0.28 kg per m <sup>2</sup> at 200 um

\* FasTop WR and FasTop TR1000 utilise half size Part A Base and Part B Hardener pouches with a standard colour pouch and WR or TR1000 aggregate.  
 \*\* FasTop BU utilises a full size Part A Base and a half size Part B Hardener pouch with a FasTop BU aggregate.  
 \*\*\* FasTop Primer utilises a full size Part A Base and a half size Part B Hardener pouch with a FasTop T150 aggregate.

## CHEMICAL RESISTANCE GUIDE

Chemical	FasTop TG69	FasTop RS69	FasTop SL23	FasTop SL45
Petrol/gasoline	Resistant	Resistant	Resistant	Resistant
Aviation fuel	Resistant	Resistant	Discolouration	Resistant
Kerosene	Resistant	Resistant	Discolouration	Resistant
Diesel fuel	Resistant	Resistant	Resistant	Resistant
Toluene	Resistant	Resistant	Resistant	Resistant
Xylene	Resistant	Resistant	Resistant	Resistant
Benzene	Resistant	Resistant	Resistant	Resistant
Aromatic hydrocarbons	Resistant	Resistant	Resistant	Resistant
Crude oil	Discolouration	Discolouration	Discolouration	Discolouration
Ethanol	Resistant	Resistant	Discolouration	Resistant
Butanol	Resistant	Resistant	Discolouration	Resistant
Propanol	Resistant	Resistant	Discolouration	Resistant
Isopropanol	Resistant	Resistant	Discolouration	Resistant
Methanol	Resistant	Resistant	Discolouration	Resistant
Ethyl acetate	Resistant	Resistant	Resistant	Resistant

Chemical	FasTop TG69	FasTop RS69	FasTop SL23	FasTop SL45
MIBK	Resistant	Resistant	Resistant	Resistant
Methyl ethyl ketone	Resistant	Resistant	Resistant	Resistant
Acetone	Resistant	Resistant	Resistant	Resistant
Formaldehyde 40%	Discolouration	Discolouration	Discolouration	Discolouration
Acetic acid 10%	Discolouration	Discolouration	Discolouration	Discolouration
Sodium bisulfate	Resistant	Resistant	Discolouration	Discolouration
Sodium dihydrogenphosphate	Resistant	Resistant	Discolouration	Discolouration
Sulfuric acid 20%	Resistant	Resistant	Discolouration	Discolouration
Potassium hydroxide 20%	Resistant	Resistant	Resistant	Resistant
Sodium hydroxide 20%	Resistant	Resistant	Resistant	Resistant
Potassium chloride	Resistant	Discolouration	Resistant	Discolouration
Sodium chloride	Resistant	Discolouration	Resistant	Discolouration
Organic durfactants	Resistant	Resistant	Resistant	Resistant
Dethyl ether	Resistant	Discolouration	Resistant	Resistant

 Resistant for up to three days exposure.

 Resistant for up to three days exposure but discolouration will occur.

Unless otherwise stated all tests were carried out at 20°C.  
 All products have been tested according to BS EN 13529:2003 – Determination of Resistance to Severe Chemical Attack.

**Note:**

- Higher temperatures will reduce the chemical resistance as shown in the table above.
- Some chemicals may concentrate due to evaporation and become more aggressive.
- Mixtures of chemicals can be more aggressive than the individual components alone.

Sherwin-Williams always recommend good housekeeping to maintain the integrity and performance of our High Performance Flooring range. Ensure chemical spillages are cleaned up within a 24 hour period to minimise any damage/discolouration.

# FASTOP® SYSTEMS

POLYURETHANE CEMENT  
HIGH PERFORMANCE FLOORING

## THE SHERWIN-WILLIAMS DIFFERENCE

Sherwin-Williams High Performance Flooring delivers world-class industry subject matter expertise, unparalleled technical and specification service, and unmatched regional commercial team support to our customers around the globe.

**SHERWIN  
WILLIAMS®** | HIGH  
PERFORMANCE  
FLOORING

[resinflooring.sherwin.eu](https://resinflooring.sherwin.eu)

FIND YOUR  
LOCAL CONTACT

