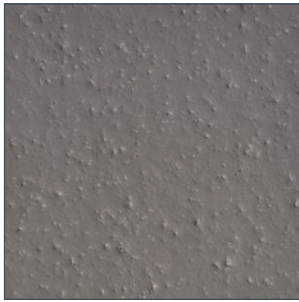


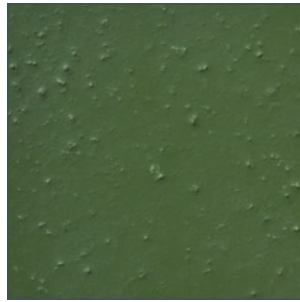
FASTOP™ MULTI SYSTEMS

COLOURS FOR SCREEDS - FASTOP RS69 AND TG69

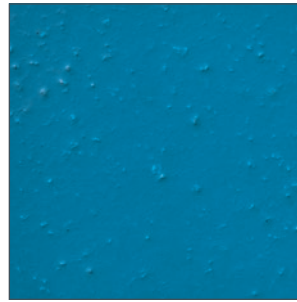
The FasTop Multi Systems provide hygienic, chemical and slip-resistant flooring solutions that are extremely hard wearing. The systems are designed for use in industrial and commercial environments such as food and beverage plants, breweries, commercial kitchens, dairies, manufacturing facilities, chemical processing plants, warehouses, garages and more.



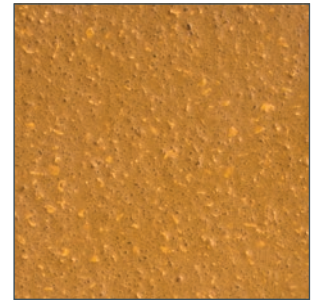
Dark Grey



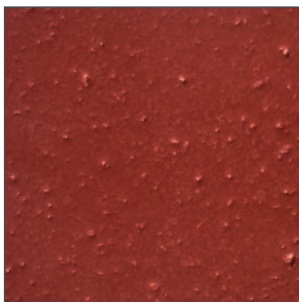
Green



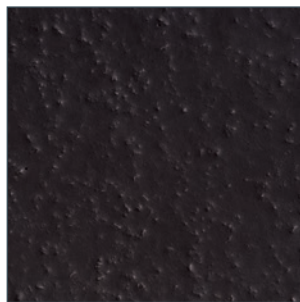
Blue



Marigold



Red



Black



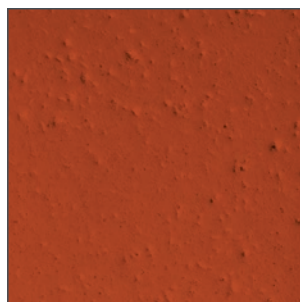
Light Grey



Buff



Mid Grey



Orange

This reproduction approximates the actual color. Factors such as the type of product, degree of gloss, texture, size and shape of area, lighting, heat, or method of application may cause color variance. Substituting other manufacturers' colors may not be representative of our blends. Contact your Sherwin-Williams representative for details.

United Kingdom:

+44 (0)1204 556420
flooring.enquiries@sherwin.com

Scandinavia:

+45 70213888
emea.pm.exportsales@sherwin.com

Italy :

+39 327 173 2931
emea.pm.Italy@sherwin.com

Rest of Europe and Africa:

+44 (0)1204 556454
emea.pm.exportsales@sherwin.com

Middle East:

+971 4 8840200
sales.me@sherwin.com

India:

+91 9871900878
pmsales.india@sherwin.com

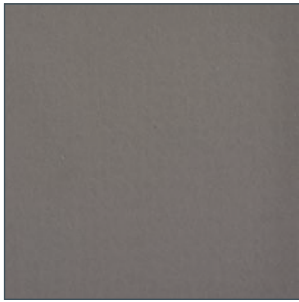
resinflooring.sherwin.eu

06/21 EMEA10065/V01/RF

FASTOP™ MULTI SYSTEMS

COLOURS FOR SELF LEVELLING SCREEDS - FASTOP SL23 AND SL45

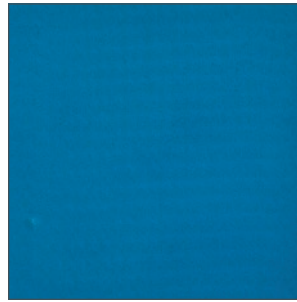
The FasTop Multi Systems provide hygienic, chemical and slip-resistant flooring solutions that are extremely hard wearing. The systems are designed for use in industrial and commercial environments such as food and beverage plants, breweries, commercial kitchens, dairies, manufacturing facilities, chemical processing plants, warehouses, garages and more.



Dark Grey



Green



Blue



Marigold



Red



Black



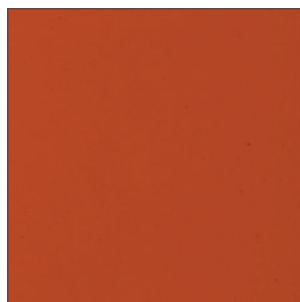
Light Grey



Buff



Mid Grey



Orange

This reproduction approximates the actual color. Factors such as the type of product, degree of gloss, texture, size and shape of area, lighting, heat, or method of application may cause color variance. Substituting other manufacturers' colors may not be representative of our blends. Contact your Sherwin-Williams representative for details.

United Kingdom:

+44 (0)1204 556420
flooring.enquiries@sherwin.com

Scandinavia:

+45 70213888
emea.pm.exportsales@sherwin.com

Italy :

+39 327 173 2931
emea.pm.Italy@sherwin.com

Rest of Europe and Africa:

+44 (0)1204 556454
emea.pm.exportsales@sherwin.com

Middle East:

+971 4 8840200
sales.me@sherwin.com

India:

+91 9871900878
pmsales.india@sherwin.com

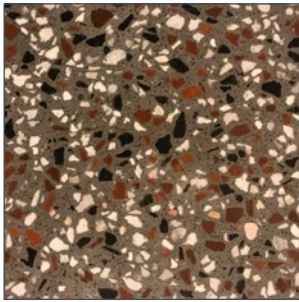
resinflooring.sherwin.eu

06/21 EMEA10065/V01/RF

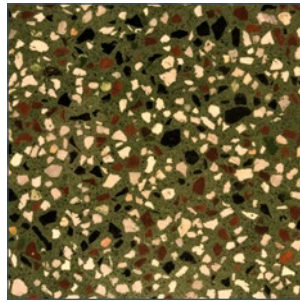
FASTOP™ MULTI SYSTEMS

COLOURS FOR FASTOP TERRAZZO

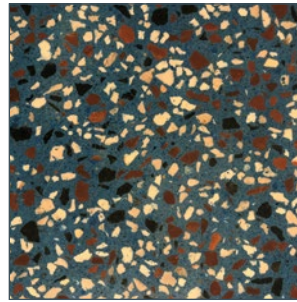
The FasTop Multi Systems provide hygienic, chemical and slip-resistant flooring solutions that are extremely hard wearing. The systems are designed for use in industrial and commercial environments such as food and beverage plants, breweries, commercial kitchens, dairies, manufacturing facilities, chemical processing plants, warehouses, garages and more.



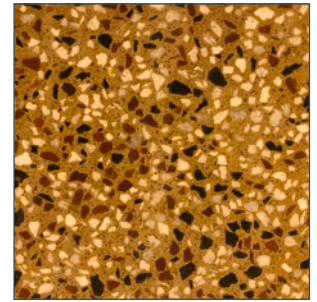
Dark Grey



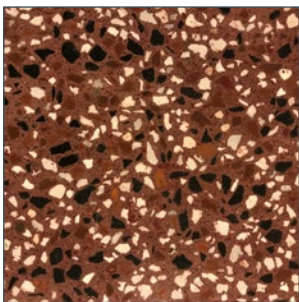
Green



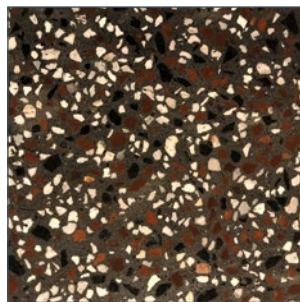
Blue



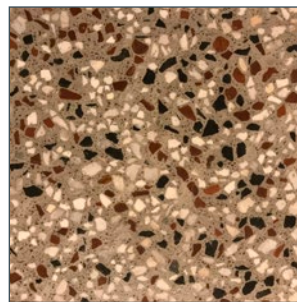
Marigold



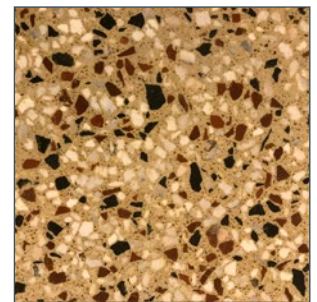
Red



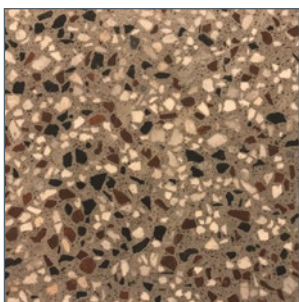
Black



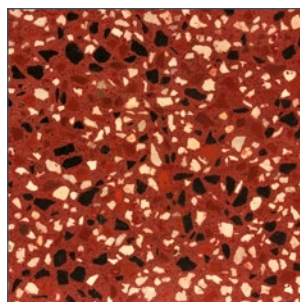
Light Grey



Buff



Mid Grey



Orange

This reproduction approximates the actual color. Factors such as the type of product, degree of gloss, texture, size and shape of area, lighting, heat, or method of application may cause color variance. Substituting other manufacturers' colors may not be representative of our blends. Contact your Sherwin-Williams representative for details.

United Kingdom:

+44 (0)1204 556420
flooring.enquiries@sherwin.com

Scandinavia:

+45 70213888
emea.pm.exportsales@sherwin.com

Italy :

+39 327 173 2931
emea.pm.Italy@sherwin.com

Rest of Europe and Africa:

+44 (0)1204 556454
emea.pm.exportsales@sherwin.com

Middle East:

+971 4 8840200
sales.me@sherwin.com

India:

+91 9871900878
pmsales.india@sherwin.com

resinflooring.sherwin.eu

06/21 EMEA10065/V01/RF