

ACRYDUR™ DECO QUARTZ CS

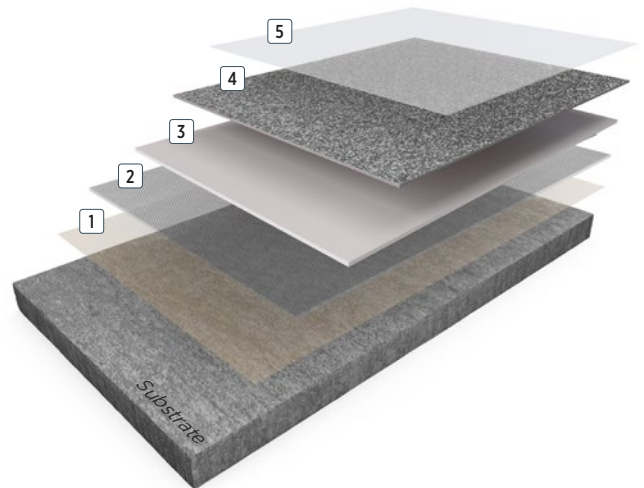
Acrydur Deco Quartz CS is a very fast cure Methyl Methacrylate (MMA) resin floor system ideal for cold storage areas and commercial kitchens. The system includes a flexible, waterproof membrane and a decorative quartz aggregate broadcast onto a base layer with a clear seal coat. The finish provides a durable and hygienic, decorative finish for fast turnaround areas.

BENEFITS

- Very fast cure
- Slip resistant
- Sheen finish
- UV stable - non yellowing
- High chemical resistance
- Resistant to hot water
- Abrasion resistant
- Hard wearing
- Cures at low temperatures
- Fast turnaround time
- Includes waterproof membrane

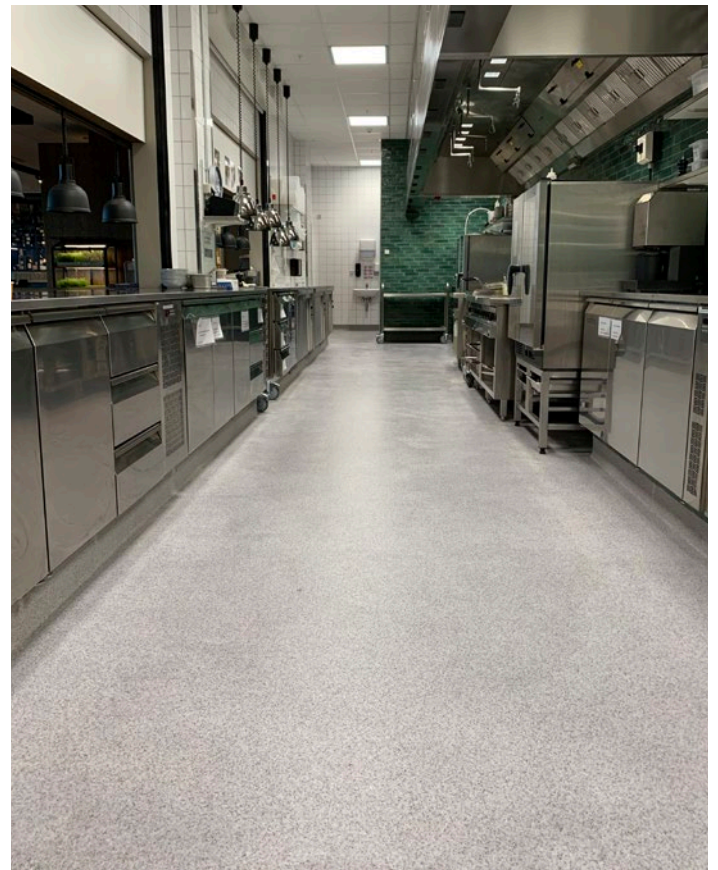
USES

- Food and beverage manufacturing
- Cold storage areas - fridge and freezers
- Commercial kitchens
- Pharmaceutical manufacturing
- Laboratories
- Retail
- Changing areas
- Shower areas
- Concrete mezzanines



- 5 Topcoat: **Acrydur TC03 Clear**
- 4 Broadcast: **Coloured quartz**
- 3 Base coat: **Acrydur BC01**
- 2 Membrane: **Acrydur ME04**
- 1 Primer: **Acrydur PR01**

5mm



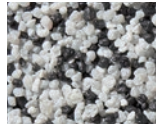
FEATURED COLOURS



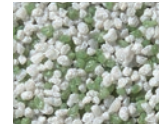
Breccia



Calcite



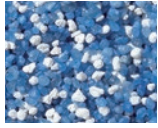
Carbonite



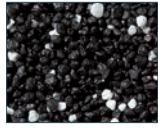
Dasite



Farrar



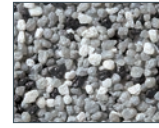
Lapis



Onyx



Sandstone



Scoria

This reproduction approximates the actual colour. Factors such as the type of product, degree of gloss, texture, size and shape of area, lighting, heat, or method of application may cause colour variance. Substituting other manufacturers' colours may not be representative of our blends. Contact your Sherwin-Williams representative for details.

SYSTEM COMPOSITION

Coat	Product options	Theoretical consumption kg/m ²	Application
Primer	Acrydur PR01	0.40	Roller
Membrane	Acrydur ME04	2	Trowel
Base coat	Acrydur BC01	2	Trowel
Broadcast	Coloured quartz	3	Broadcast
Topcoat	Acrydur TC03 Clear	0.45	Squeegee / roller

Approximate thickness: 5mm

TYPICAL CURE TIMES

Temperature	10°C	20°C	30°C
Peroxide addition	4%	2%	1%
Pot life	20 mins	15 mins	12 mins
Cure time	45 mins	30 mins	30 mins

CHEMICAL RESISTANCE

Chemical	7 days exposure
Acetic acid 10%	No change
Ammonium Hydroxide 25%	No change
Animal fats	No change
Beer	No change
Blood	No change
Boric Acid	No change
Castor Oil	No change
Citric Acid 50%	No change
Hydrochloric Acid 36%	No change
Lactic Acid 30%	No change

TYPICAL PHYSICAL PROPERTIES

Compressive strength	DIN 1164	38 N/m ²
Tensile strength	DIN 1164	23 N/m ²
UV stable	Yes	
Bond strength	>1.5 MPa (substrate failure)	
Water permeability	Karsten test	Nil
Slip resistance	BS 7976 - 2:2002+A1:2013	>36 wet/dry
Wear resistance	DIN 52 459	125 mg
FeRFA category	6	

THE SHERWIN-WILLIAMS DIFFERENCE

Sherwin-Williams High Performance Flooring delivers world-class industry subject matter expertise, unparalleled technical and specification service, and unmatched regional commercial team support to our customers around the globe.

