

## ACRYDUR™ DECO QUARTZ TG

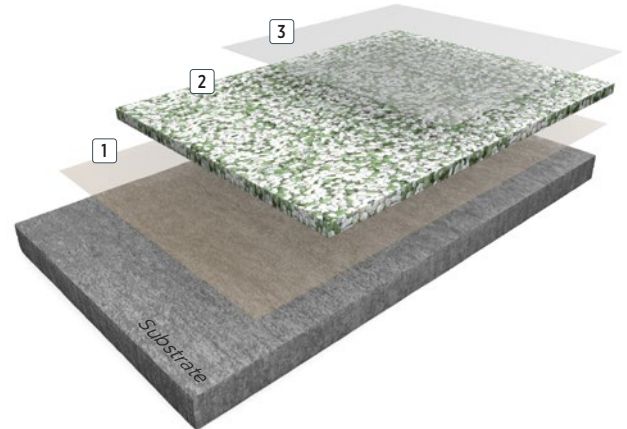
Acrydur Deco Quartz TG is a very fast cure Methyl Methacrylate (MMA) decorative flooring system ideal for industrial and commercial areas. The system includes a multi-coloured quartz aggregate with a clear seal coat to create a tough and durable finish for areas requiring a fast turnaround.

### BENEFITS

- Very fast cure
- Sheen finish
- UV stable - non yellowing
- High chemical resistance
- Resistant to hot water
- Abrasion resistant
- Hard wearing
- Easy to clean
- Seamless floor and coving in same material
- Cures at low temperatures
- Fast turnaround time

### USES

- Food and beverage manufacturing
- Pharmaceutical manufacturing
- Laboratories
- Retail
- Commercial
- Prisons
- Public buildings
- Stadiums and arenas
- Veterinary facilities
- Education facilities

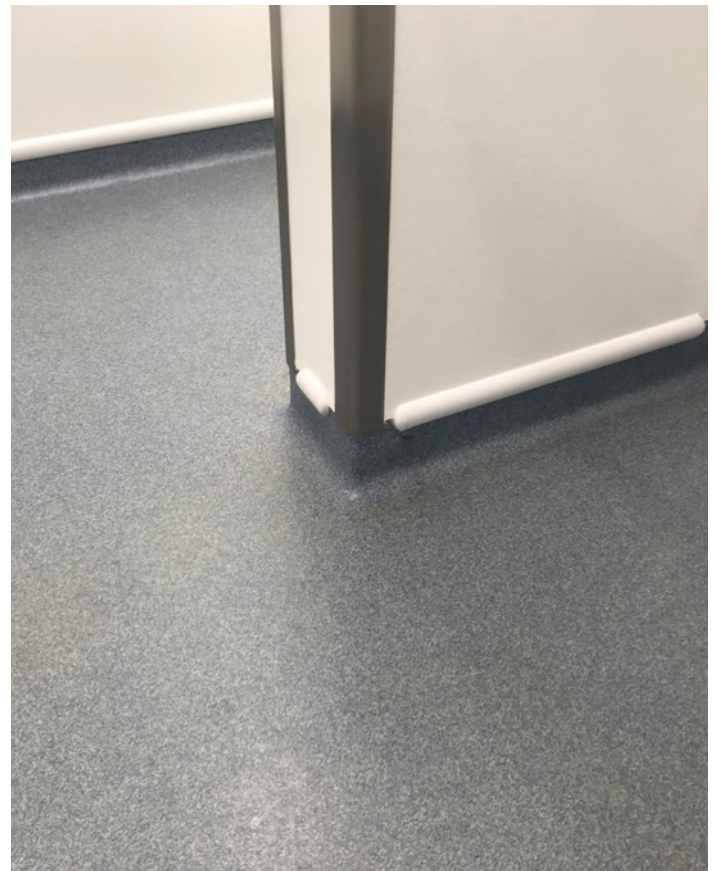


3 Topcoat: Acrydur TC01 Clear

2 Screed: Acrydur BC01 blended with coloured quartz

1 Primer: Acrydur PR01

**4mm**



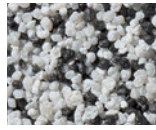
**FEATURED COLOURS**



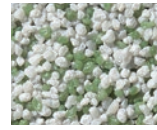
Breccia



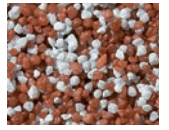
Calcite



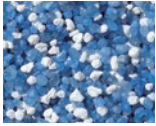
Carbonite



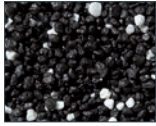
Dasite



Farrar



Lapis



Onyx



Sandstone



Scoria

This reproduction approximates the actual colour. Factors such as the type of product, degree of gloss, texture, size and shape of area, lighting, heat, or method of application may cause colour variance. Substituting other manufacturers' colours may not be representative of our blends. Contact your Sherwin-Williams representative for details.

**SYSTEM COMPOSITION**

Coat	Product options	Theoretical consumption kg/m <sup>2</sup>	Application
Primer	Acrydur PR01	0.40	Roller
Screed	Acrydur BC01 base blended with coloured quartz	6.20	Trowel
Topcoat	Acrydur™ TC01 Clear	0.40	Squeegee / roller

**Approximate thickness: 4mm**

**TYPICAL CURE TIMES**

Temperature	10°C	20°C	30°C
Peroxide addition	3%	2%	1%
Pot life	15 mins	15 mins	8 mins
Cure time	30 mins	30 mins	15 mins

**CHEMICAL RESISTANCE**

Chemical	7 days exposure
Acetic Acid 30%	No change
Beer	No change
Blood	No change
Castor Oil	No change
Citric Acid 50%	No change
Diesel	No change
Petrol	No change
Glycerine	No change
Lactic Acid	No change
Hydrochloric Acid 36%	No change

**TYPICAL PHYSICAL PROPERTIES**

Compressive strength	DIN 1164	38 N/mm <sup>2</sup>
Tensile strength	DIN 1164	23 N/mm <sup>2</sup>
UV stable	Yes	
Bond strength	>1.5 Mpa (substrate failure)	
Water permeability	Karsten test	Nil
Slip resistance	BS 7976 - 2:2002+A1:2013	>36 dry
Wear resistance	DIN 53 122	125 mg
FeRFA category	6	

**THE SHERWIN-WILLIAMS DIFFERENCE**

Sherwin-Williams High Performance Flooring delivers world-class industry subject matter expertise, unparalleled technical and specification service, and unmatched regional commercial team support to our customers around the globe.

FIND YOUR  
LOCAL CONTACT

