

FASTOP® DECO FLAKE

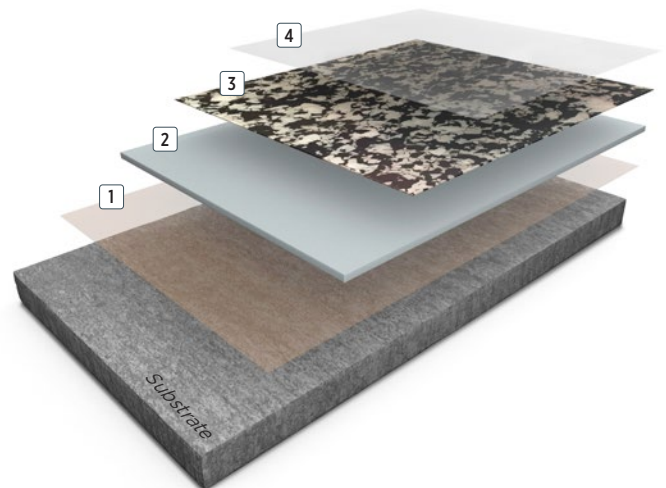
FasTop Deco Flake is a polyurethane cement, resin floor system using decorative flakes and a polyaspartic top seal which provides a UV stable, textured, hard-wearing finish. The system is ideal for commercial and industrial facilities providing an aesthetically pleasing finish with resistance against chemical attack and abrasion where a tough decorative floor is required.

BENEFITS

- Decorative and durable finish
- Slip resistant
- UV stable - prevents yellowing
- Good chemical resistance
- Non dusting
- Can be laid onto 7 day old concrete
- Gloss finish
- Seamless
- Easy to clean
- Hygienic
- Silica free

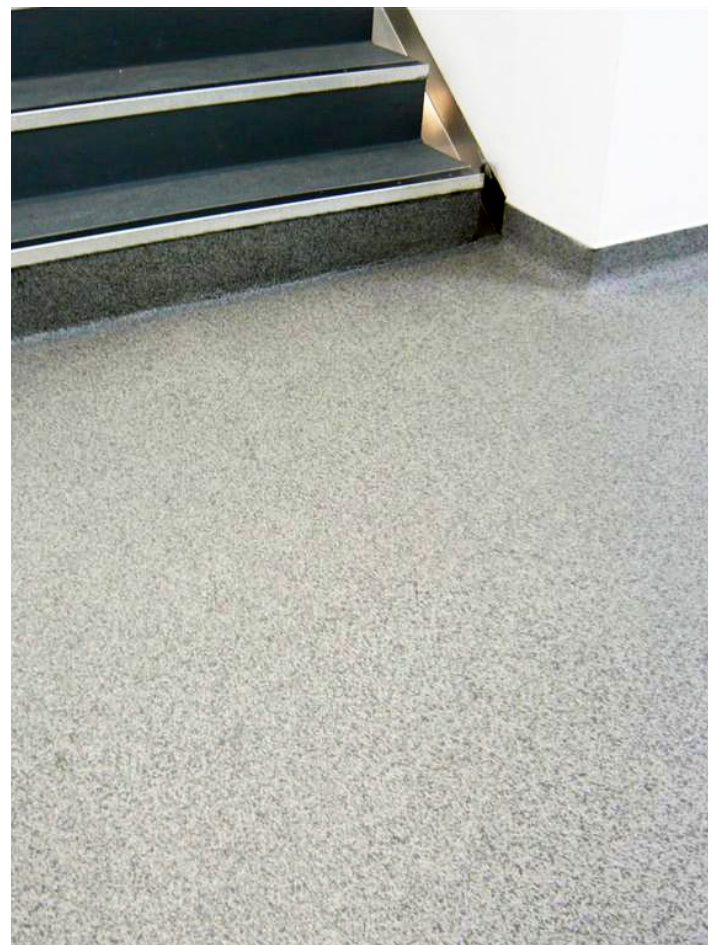
USES

- Pharmaceutical plants
- Cultivation facilities
- Changing areas
- Canteen
- Reception areas
- Corridors
- Laboratories
- Automotive workshops
- Engineering workshops
- Commercial and leisure facilities
- Healthcare facilities
- Cleanrooms
- Veterinary centres

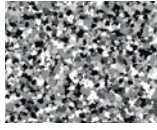


- 4 Topcoat: **Elladur™ SF Clear**
- 3 Flakes: **PVA flakes**
- 2 Base coat: **FasTop Multi SL23**
- 1 Primer (optional): **FasTop Multi Primer**

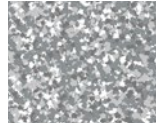
3 - 4mm



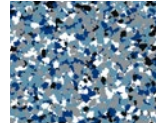
FEATURED COLOURS



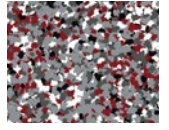
Skiddaw Grey



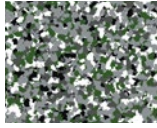
Langdale Grey



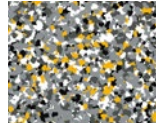
Serenity Blue



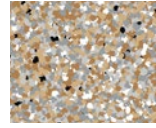
Pagoda Red



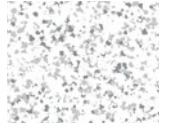
Evergreen



Dystopian



Nevada



Himalayan

This reproduction approximates the actual colour. Factors such as the type of product, degree of gloss, texture, size and shape of area, lighting, heat, or method of application may cause colour variance. Substituting other manufacturers' colours may not be representative of our blends. Contact your Sherwin-Williams representative for details.

SYSTEM COMPOSITION

Coat	Product options	Theoretical consumption kg/m ²	Application
Primer (optional)	FasTop Multi Primer	0.30	Squeegee / roller
Base coat	FasTop Multi SL23	4	Trowel / spiked roller
Flakes	PVA Flakes	0.30 - 0.50	Scatter
Topcoat	Elladur™ SF Clear	0.65	Squeegee / roller
Approximate thickness: 3 - 4mm			

TYPICAL CURE TIMES

Temperature	10°C	20°C	30°C
Foot traffic	4 - 5 hrs	4 - 5 hrs	4 - 5 hrs
Full traffic	8 - 10 hrs	8 - 10 hrs	8 - 10 hrs
Full chemical cure	7 days	7 days	7 days

CHEMICAL RESISTANCE

Sherwin-Williams High Performance Flooring offers a broad range of systems to accommodate nearly every industrial, commercial and institutional setting. Each flooring system includes a standard chemical resistant topcoat or surface proven to perform under typical conditions.

Important considerations:

- The combination of cleaning solutions, sanitising chemicals, processing substances and products found in any operational setting is unique.
- Knowing exactly which materials are present – as well as their concentrations and typical exposure times before cleanup – is critical for proper flooring system selection.
- During the specification process, a flooring system's standard chemical resistant topcoat may get replaced with one better suited to unique facility conditions.

The ability of a flooring system to perform as designed relies heavily on proper selection. Matching each use case with the right chemical resistant flooring is key to a having a facility looking great and functioning at peak level over the long term.

See our Chemical Resistance Guide and other technical resources on our website. Connect with a Sherwin-Williams High Performance Flooring expert for help with specifying an optimal flooring system for your facility.

TYPICAL PHYSICAL PROPERTIES

Hardness, Shore D	BS ISO 7619-1:2010	82
Abrasion resistance	BS EN 13892-4:2002	ASTM D4060 - 144 mg loss per 1000 cycles
Compressive strength	BS EN ISO 604:2003	43 MPa
Tensile strength	BS EN ISO 527-2:2012 BS EN 13892-2:2002	7 N/mm ²
Flexural strength	BS EN ISO 178:2010 +A1:2013 BS EN 6319-7:1985	26 N/mm ²
Bond strength	BS EN 13892-8:2002	>3 N/mm ²
Impact resistance	BS EN 1504-2:2004	Class II
Chemical resistance	Good	
Reaction to fire	BS EN 13501-1:2018	B _{fl} - s1
UV Stable	Yes	
FeRFA category	4	

THE SHERWIN-WILLIAMS DIFFERENCE

Sherwin-Williams High Performance Flooring delivers world-class industry subject matter expertise, unparalleled technical and specification service, and unmatched regional commercial team support to our customers around the globe.

FIND YOUR
LOCAL CONTACT

