

FASTOP® RS69

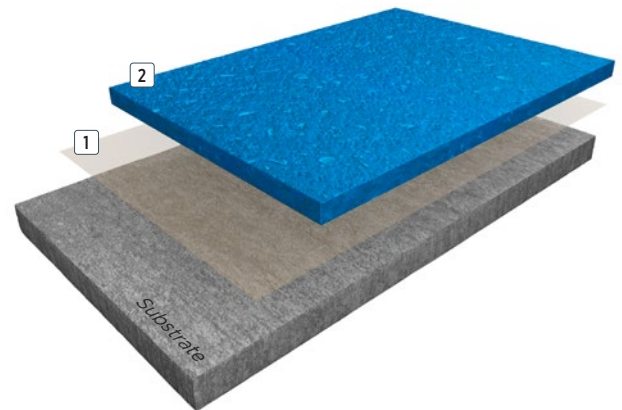
FasTop RS69 is a matt finish, heavy duty, resin rich, polyurethane cement floor screed system providing excellent resistance against chemical attack, thermal shock and abrasion. A food grade non-taint and odourless product, providing slip resistance in wet and dry conditions. For fast installation **FasTop RS69** can be applied by rake, trowel or screedbox. Resistant to steam cleaning, boiling water and process liquids up to 120°C and suitable for freezer temperatures down to -40°C at 9 mm thickness.

BENEFITS

- Excellent mechanical, chemical and thermal resistance
- Resistant to hot water and steam
- Excellent slip resistant finish
- Extremely hard wearing
- Non dusting
- Food safety compliance and non-taint (HACCP and Campden BRI approved)
- Resin rich for faster installation
- Suitable for freezer temperatures
- Long lifespan
- Impermeable and non-porous
- Very low emissions
- Easy to clean and to maintain
- Matt finish
- Anti-microbial finish prevents bacterial growth

USES

- Food and beverage manufacturing
- Breweries and distilleries
- Dairies
- Commercial kitchens
- Pharmaceutical processing
- Chemical plant processing
- Abattoirs and meat processing facilities
- Heavy duty plant and traffic areas



2 Screed: **FasTop Multi RS69**

1 Primer: **FasTop Multi Primer** (optional)

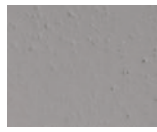
6 - 9mm



FEATURED COLOURS



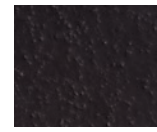
Light Grey



Mid Grey



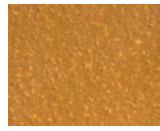
Dark Grey



Black



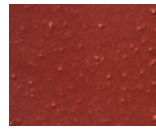
Buff



Marigold



Orange



Red



Green



Blue

This reproduction approximates the actual colour. Factors such as the type of product, degree of gloss, texture, size and shape of area, lighting, heat, or method of application may cause colour variance. Substituting other manufacturers' colours may not be representative of our blends. Contact your Sherwin-Williams representative for details.

SYSTEM COMPOSITION

Coat	Product options	Theoretical consumption kg/m ²	Application
Primer (optional)	FasTop Multi Primer	0.30	Roller
Screed	FasTop Multi RS69	12 - 19	Trowel / screed box
Approximate thickness: 6 - 9mm			

TYPICAL CURE TIMES

Temperature	10°C	20°C	30°C
Foot traffic	24 - 36 hrs	6 - 8 hrs	5 - 6 hrs
Full traffic	48 - 72 hrs	48 hrs	36 - 48 hrs
Full chemical cure	8 days	3 - 5 days	2 - 3 days

CHEMICAL RESISTANCE

Chemical	3 days exposure
Sodium bisulphate	No change
Sulfuric Acid 20%	No change
Sodium hydroxide 20%	No change
Sodium chloride	No change
Xylene	No change
Methyl Ethyl Ketone	No change
Acetone	No change
Acetic Acid 10%	No change
Toluene	No change
Ethanol	No change

TYPICAL PHYSICAL PROPERTIES

Hardness, Shore D	BS ISO 7619 - 1:2010	72
Abrasion resistance	BS EN 13892 - 4:2002	AR 1
Compressive strength	BS EN 13892 - 2:2002	54 MPa
Flexural strength	BS EN 13892 - 2:2002	6.3 N/mm ²
Bond strength	BS EN 13892 - 8:2002	>3 N/mm ² (substrate failure)
Impact resistance	BS EN 1504 - 2:2004	Class II
Temperature resistance	Acceptable temperature range -40°C to +120°C at 9 mm	
Chemical resistance	Excellent	
Reaction to fire	BS EN 13501 - 1:2018	B _{fl} - s1
Slip resistance	BS 7976 - 2:2002+A1:2013	Dry 79, Wet 67
CE marked screeds	BS EN 13813:2022	Yes
Tensile strength	BS EN 6319-7:1985	3.5 N/mm ²
FeRFA category	8	

THE SHERWIN-WILLIAMS DIFFERENCE

Sherwin-Williams High Performance Flooring delivers world-class industry subject matter expertise, unparalleled technical and specification service, and unmatched regional commercial team support to our customers around the globe.

