



EPOXY FLOORING MULTI-LAYER SYSTEM

ResuflorTM Broadcast is a multi-layer epoxy flooring system enabling hard wearing matt and gloss finishes. A range of decorative or functional features, adaptable to different end uses, are available upon use of carefully selected resin and aggregate choices. Chemical and abrasion resistance can be coupled with UV resistance with the use of an adequate topcoat.

1.5 - 3 mm

Benefits

- Seamless
- High build
- Anti-slip requirements can be tailored to each project needs
- Excellent chemical resistance
- Hygienic and easily cleaned
- UV colour stability (with adequate topcoat)
- Excellent slip resistance
- Matt, satin or high gloss finish available
- Available in a wide range of colours
- Extremely hard wearing
- Hygienic

Scope of use

- Automotive workshops
- Chemical plant rooms
- Engineering workshops
- Aviation hangars and production areas
- Factory units
- Warehouses
- Laboratories
- Studios and workshops
- Printing and packaging areas
- Food and beverage manufacture and processing
- Cultivation facilities
- Automotive production
- Pharmaceutical and chemical plant processing

DESIGNED TO PERFORM

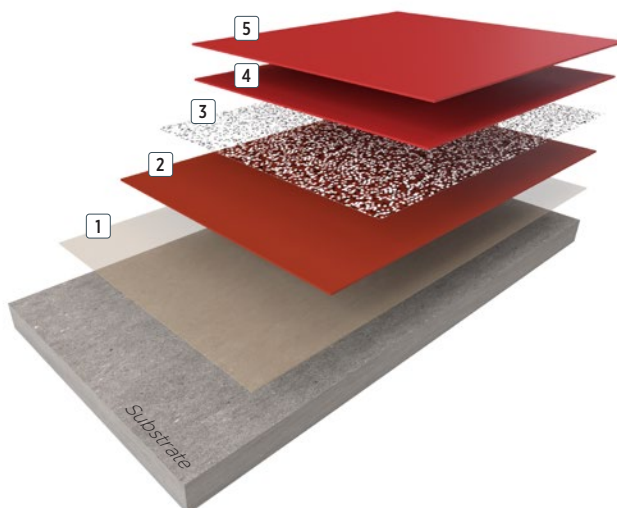
resinflooring.sherwin.eu

**SHERWIN
WILLIAMS®**

HIGH
PERFORMANCE
FLOORING

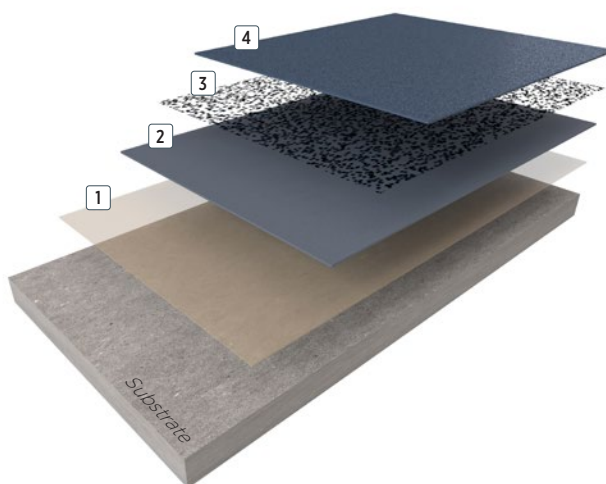
HEAVY DUTY ANTI-SLIP WITH UV RESISTANCE

- 5 Seal coat: **ResupenTM WB Coloured, Satin or Matt**
- 4 Topcoat: **ResufloorTM HB Coloured**
- 3 Broadcast: **Quartz 0.3 - 0.9mm**
- 2 Base coat: **ResufloorTM HB**
- 1 Primer: **ResuprimeTM ST** (with or without 80% w/w of quartz 0.1 - 0.3)



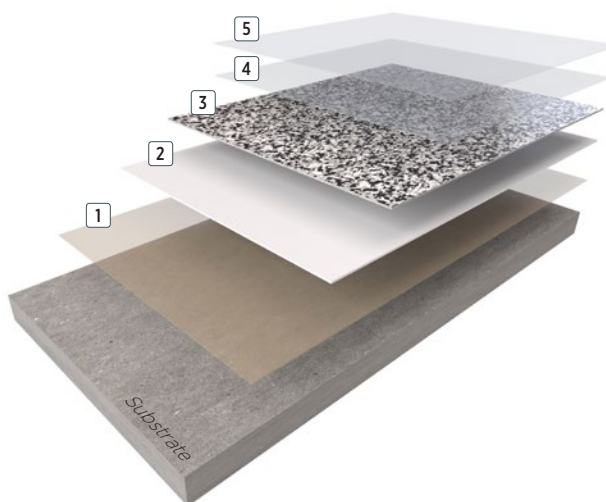
HIGH BUILD TEXTURED

- 4 Topcoat: **ResufloorTM HB Coloured**
- 3 Broadcast: **Aluminium Oxide #54**
- 2 Base coat: **ResufloorTM HB**
- 1 Primer: **ResuprimeTM ST** (with or without 80% w/w of quartz 0.1 - 0.3)



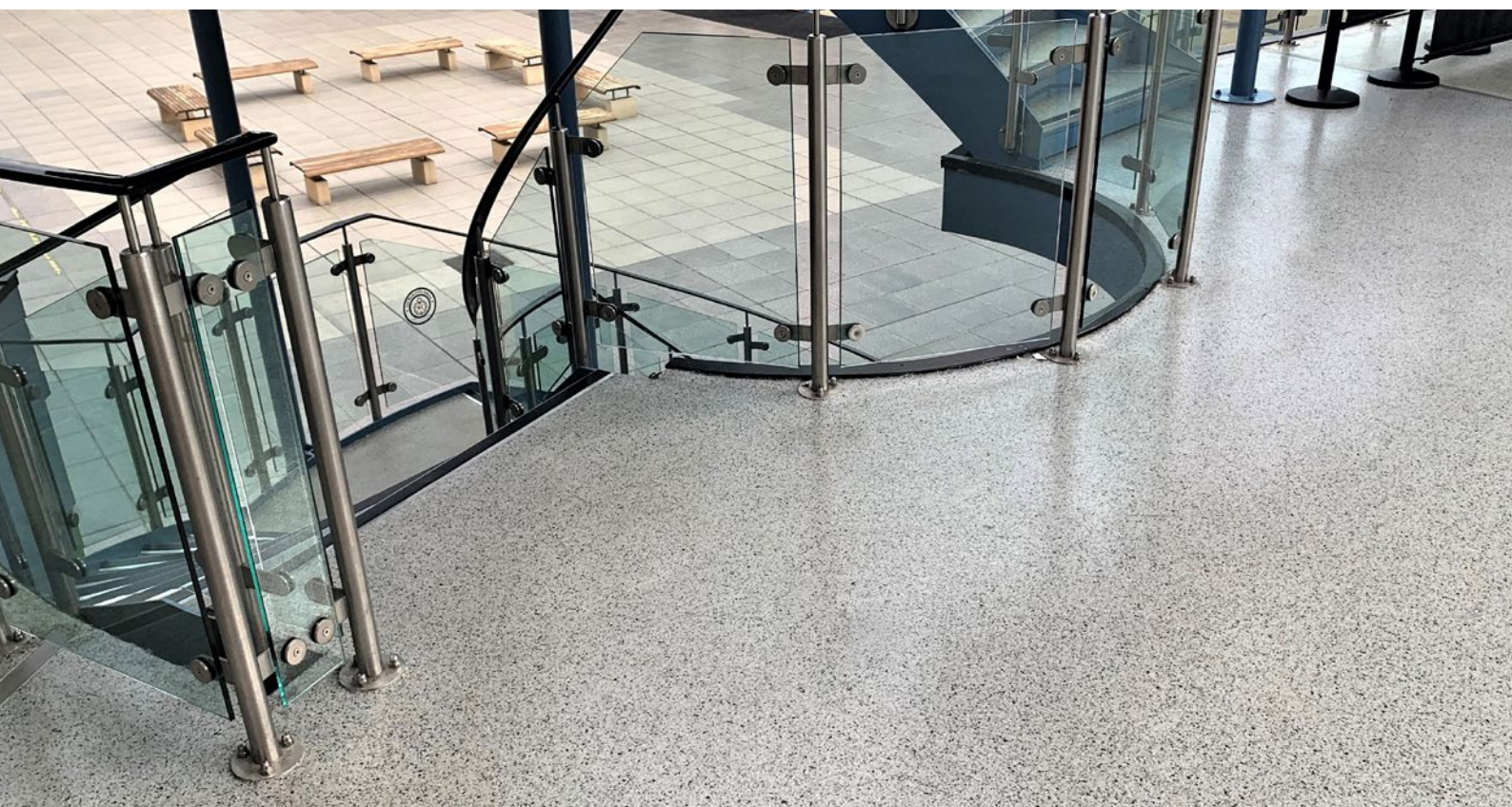
DECORATIVE FLAKE

- 5 Seal coat: **ResupenTM WB Clear, Satin or Matt**
- 4 Topcoat: **ResufloorTM HB Clear** (one or two coats)
- 3 Aggregates: **Coloured Flakes**
- 2 Base coat: **ResufloorTM HB**
- 1 Primer: **ResuprimeTM ST** (with or without 80% w/w of quartz 0.1 - 0.3)



SYSTEM COMPOSITION

SYSTEM COMPOSITION		Heavy Duty Anti-slip with UV resistance	High Build Textured	Decorative Flake	
Coat	Product options	Theoretical consumption kg/m²			Application
Primer	Resuprime™ ST or Resuprime™ ST + 80% Quartz 0.1 - 0.3	0.30			Squeegee / roller
		0.50			Squeegee / roller
Base coat	Resuflo™ HB	0.50			Squeegee / roller
Broadcast	Aluminium Oxide #54 or Quartz 0.3 - 0.9 or Deco Flakes	2.00	0.20	0.30 - 0.50	Scatter
Topcoat	Resuflo™ HB Coloured or Resuflo™ HB Clear & Resuflo™ HB Clear	0.40	0.30		
			0.50		Squeegee / roller
			0.50		
Seal coat	Resutile™ ST Colour or Resupen™ WB Matt or Satin (Coloured for UV Resistance, Clear over Decorative Flake)	0.15		0.12	Squeegee / roller
		0.12			Roller
	Approximate thickness	1.5 - 3 mm			



TYPICAL PHYSICAL PROPERTIES

Physical properties are based on ResufloorTM HB

Abrasion resistance ASTM D4060 - 14	140.1 mg loss / 1000 cycles
Compressive strength BS EN ISO 604:2003	9.6 MPa
Tensile strength BS EN ISO 527 - 2:2012	3.6 MPa
Flexural strength BS EN ISO 178:2010+A1:2013	3.2 N/mm ²
Bond strength BS EN 13892 - 8:2002	>3 N/mm ² (substrate failure)
Temperature resistance	Temperatures up to 60°C
Chemical resistance	Good
Reaction to fire BS EN 13501 - 1:2018	B _{fl} - s1
Slip resistance BS 7976 - 2:2002+A1:2013	>36

TYPICAL CURE TIMES

Temperature	10°C	20°C	30°C
Foot traffic	24 - 36 hrs	12 - 16 hrs	8 - 12 hrs
Full traffic	48 - 72 hrs	24 - 36 hrs	16 - 24 hrs
Full chemical cure	10 days	7 days	5 days

DISCLAIMER

The information and recommendations set forth in this document are based upon tests conducted by or on behalf of The Sherwin-Williams Company. Such information and recommendations set forth herein are subject to change and pertain to the product(s) offered at the time of publication. Published technical data and instructions are subject to change without notice.

Please report to Product Data Sheets and Safety Data Sheets for detailed application guidance.

WARRANTY

The Sherwin-Williams Company warrants our products to be free of manufacturing defects in accord with applicable Sherwin-Williams quality control procedures. Liability for products proven defective, if any, is limited to replacement of the defective product or the refund of the purchase price paid for the defective product as determined by Sherwin-Williams. No warranty or guarantee of any kind is made by Sherwin-Williams, expressed or implied, statutory, by operation of law or otherwise including merchantability and fitness for a particular purpose.