

## RESUFLOOR™ DECO QUARTZ BC

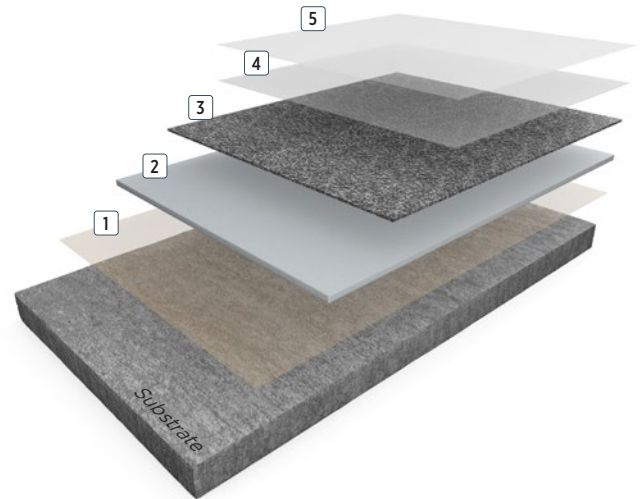
**Resufloor Deco Quartz BC** is a multi-layer decorative flooring system which utilises coloured quartz aggregates which are broadcast into a self-levelling epoxy base. The system gives exceptional slip resistance in both wet and dry conditions and is ideal for industrial and commercial applications.

### BENEFITS

- Decorative textured finish
- Good slip resistance
- Low odour
- Gloss finish
- Good abrasion and impact resistance
- Chemical resistant
- Non dusting

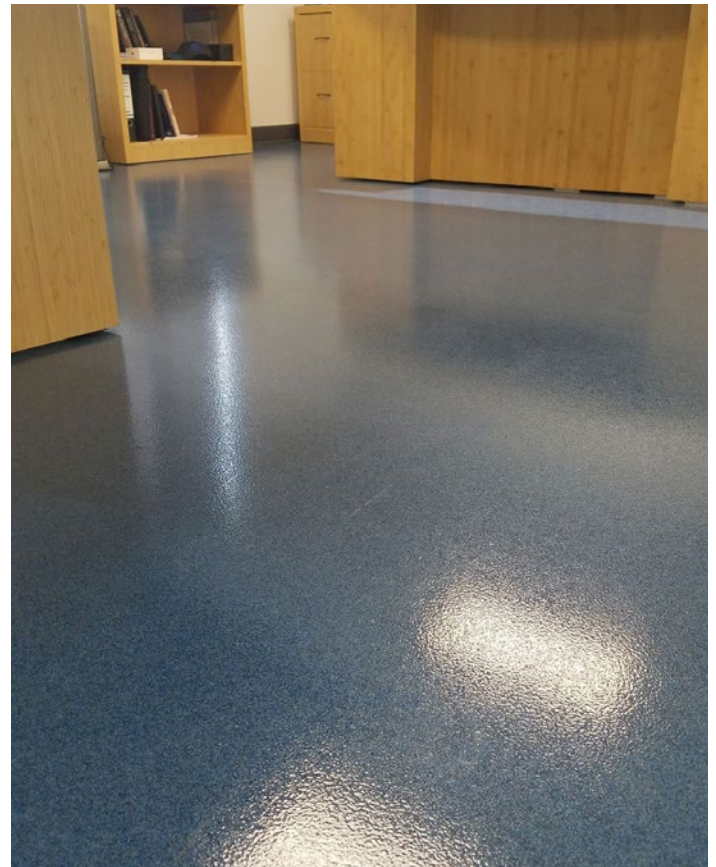
### USES

- Commercial kitchens
- Schools, colleges and universities
- Stadiums and arenas
- Reception areas
- Changing rooms
- Showers
- Leisure facilities
- Prisons
- Custody suites
- Dog kennels
- Veterinary centres
- Healthcare
- Pharmaceutical manufacturing
- Light manufacturings



- 5 Seal coat: **Resufloor HB Clear**
- 4 Topcoat: **Resufloor HB Clear**
- 3 Aggregate: **Coloured quartz 0.3 - 0.8 mm**
- 2 Screed: **Resufloor SLX**
- 1 Primer: **Resuprime™ ST**

4mm



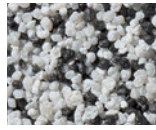
**FEATURED COLOURS**



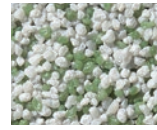
Breccia



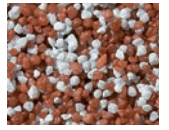
Calcite



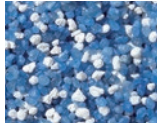
Carbonite



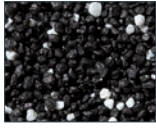
Dasite



Farrar



Lapis



Onyx



Sandstone



Scoria

This reproduction approximates the actual colour. Factors such as the type of product, degree of gloss, texture, size and shape of area, lighting, heat, or method of application may cause colour variance. Substituting other manufacturers' colours may not be representative of our blends. Contact your Sherwin-Williams representative for details.

**SYSTEM COMPOSITION**

Coat	Product options	Theoretical consumption kg/m <sup>2</sup>	Application
Primer	Resuprime™ ST	0.30	Trowel / squeegee
Screed	Resufloor SLX	2.50 - 5.00	Trowel / spiked roller
Broadcast	Coloured quartz 0.3 - 0.8 mm	3.00	Broadcast
Topcoat	Resufloor HB Clear	0.20	Squeegee / roller
Seal coat	Resufloor HB Clear	0.20	Squeegee / roller

**Approximate thickness: 4mm**

**TYPICAL CURE TIMES**

Temperature	10°C	20°C	30°C
Foot traffic	24 - 36 hrs	12 - 16 hrs	8 - 12 hrs
Full traffic	72 - 96 hrs	24 - 36 hrs	16 - 24 hrs
Full chemical cure	10 days	7 days	5 days

**CHEMICAL RESISTANCE**

Sherwin-Williams High Performance Flooring offers a broad range of systems to accommodate nearly every industrial, commercial and institutional setting. Each flooring system includes a standard chemical resistant topcoat or surface proven to perform under typical conditions.

Important considerations:

- The combination of cleaning solutions, sanitising chemicals, processing substances and products found in any operational setting is unique.
- Knowing exactly which materials are present – as well as their concentrations and typical exposure times before cleanup – is critical for proper flooring system selection.
- During the specification process, a flooring system's standard chemical resistant topcoat may get replaced with one better suited to unique facility conditions.

The ability of a flooring system to perform as designed relies heavily on proper selection. Matching each use case with the right chemical resistant flooring is key to a having a facility looking great and functioning at peak level over the long term.

See our Chemical Resistance Guide and other technical resources on our website. Connect with a Sherwin-Williams High Performance Flooring expert for help with specifying an optimal flooring system for your facility.

**THE SHERWIN-WILLIAMS DIFFERENCE**

Sherwin-Williams High Performance Flooring delivers world-class industry subject matter expertise, unparalleled technical and specification service, and unmatched regional commercial team support to our customers around the globe.

**TYPICAL PHYSICAL PROPERTIES**

Abrasion resistance	BS 8204-2	140.10 mg (CS17)
Compressive strength	BS EN ISO 604:2003	46 MPa
Tensile strength	BS EN ISO 527 - 2:2012	15 MPa
Flexural strength	ISO 178:2010	45 N/mm <sup>2</sup>
Bond strength	BS EN 13892-8:2002	>3 N/mm <sup>2</sup> (substrate failure)
Impact resistance	BS EN 1504-2:2004	Class II
Temperature resistance	Temperatures up to 50°C	
Reaction to fire	EN 13501-1:2018	B <sub>FL</sub> - s1
Slip resistance	Dry 87, Wet 63	
FeRFA category	4	

**FIND YOUR  
LOCAL CONTACT**

