

RESUFLOOR™ DECO QUARTZ STRUCTURE

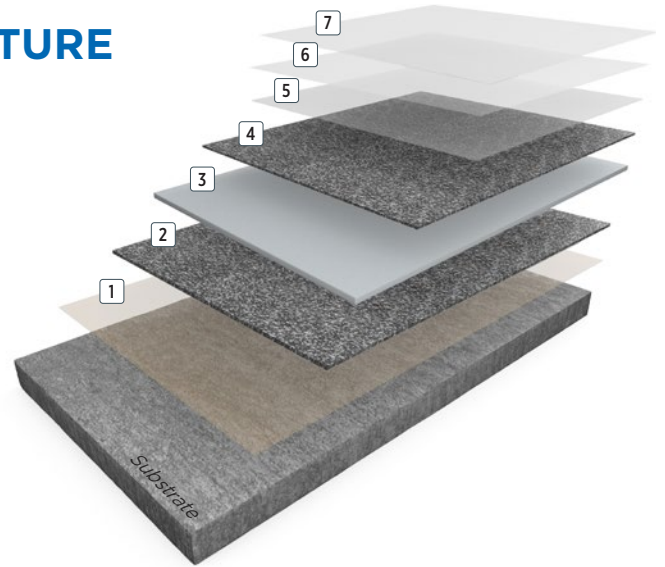
Resufloor Deco Quartz Structure is a multi-layer decorative flooring system which utilises coloured quartz aggregates which are broadcast into clear epoxy resin. This seamless floor system provides a slip-resistant finish which is impervious and durable, perfect for a variety of industrial and commercial applications.

BENEFITS

- Decorative finish
- Excellent slip resistance
- Gloss, matt or silk finish possible
- Hygienic
- Seamless
- Easy to clean
- Impact resistant
- Low odour
- Good abrasion and impact resistance
- Chemical resistant

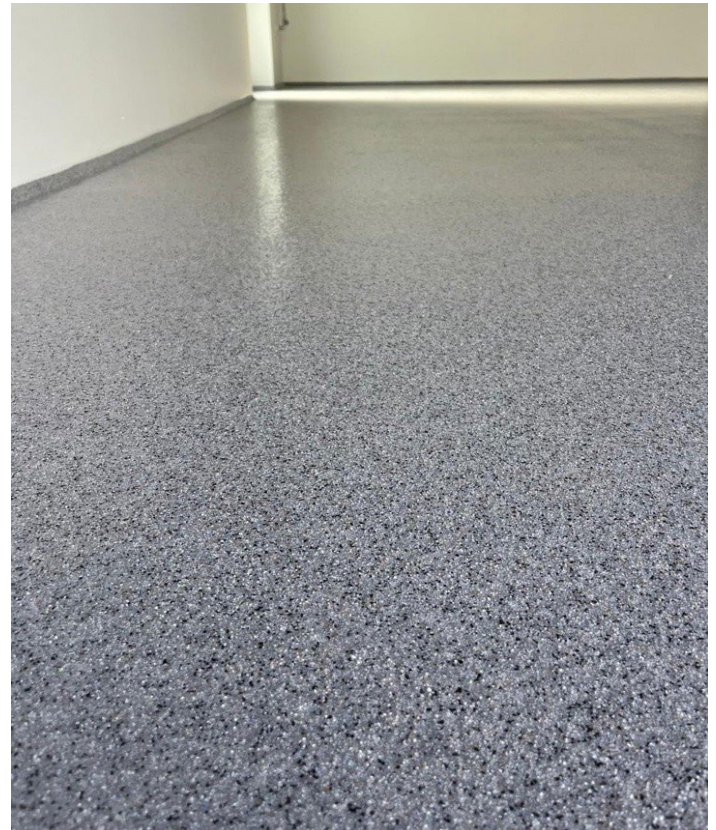
USES

- Shopping malls
- Print shops
- Warehouses
- Assembly halls
- Packaging areas
- Engineering workshops
- Schools, colleges and universities
- Stadiums and arenas
- Reception areas
- Wet changing rooms
- Shower areas
- Healthcare
- Pharmaceutical
- Light manufacturing
- Commercial kitchens



- 7 Sealer (optional): **Resupen™ WB Clear (satin/matt)**
- 6 Topcoat: **Resufloor HB Clear**
- 5 Topcoat: **Resufloor HB Clear**
- 4 Broadcast: **Coloured quartz 0.7 - 1.2mm**
- 3 Bodycoat: **Resufloor HB Clear mixed with compact filler**
- 2 Broadcast: **Coloured quartz 0.7 - 1.2mm**
- 1 Primer: **Resuprime™ ST**

3 - 5mm



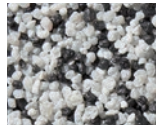
FEATURED COLOURS



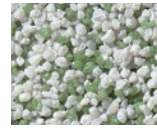
Breccia



Calcite



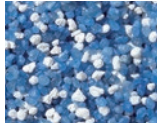
Carbonite



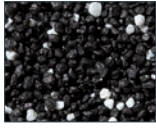
Dasite



Farrar



Lapis



Onyx



Sandstone



Scoria

This reproduction approximates the actual colour. Factors such as the type of product, degree of gloss, texture, size and shape of area, lighting, heat, or method of application may cause colour variance. Substituting other manufacturers' colours may not be representative of our blends. Contact your Sherwin-Williams representative for details.

SYSTEM COMPOSITION

| Coat | Product options | Theoretical consumption kg/m ² | Application |
|----------------------|--|---|--------------------|
| Primer | Resuprime™ ST | 0.25 | Squeegee / roller |
| Broadcast | Coloured quartz 0.7 - 1.2 mm | 0.5 | Scatter |
| Bodycoat | Resuflo TM HB Clear mixed with compact filler | 1 + 1 | Squeegee / scraper |
| Broadcast | Coloured quartz 0.7 - 1.2 mm | 3.5 | Broadcast |
| Topcoat | Resuflo TM HB Clear | 0.4 - 0.6 | Squeegee / roller |
| Topcoat | Resuflo TM HB Clear | 0.4 - 0.6 | Squeegee / roller |
| Seal coat (optional) | Resupen WB Clear Satin/Matt | 0.12 | Roller |

Approximate thickness: 3 - 5mm

TYPICAL CURE TIMES

| Temperature | 10°C | 20°C | 30°C |
|--------------------|-------------|-------------|-------------|
| Foot traffic | 24 - 36 hrs | 12 - 16 hrs | 8 - 12 hrs |
| Full traffic | 72 - 96 hrs | 34 - 36 hrs | 24 - 48 hrs |
| Full chemical cure | 10 days | 7 days | 5 days |

CHEMICAL RESISTANCE

Sherwin-Williams High Performance Flooring offers a broad range of systems to accommodate nearly every industrial, commercial and institutional setting. Each flooring system includes a standard chemical resistant topcoat or surface proven to perform under typical conditions.

Important considerations:

- The combination of cleaning solutions, sanitising chemicals, processing substances and products found in any operational setting is unique.
- Knowing exactly which materials are present – as well as their concentrations and typical exposure times before cleanup – is critical for proper flooring system selection.
- During the specification process, a flooring system's standard chemical resistant topcoat may get replaced with one better suited to unique facility conditions.

The ability of a flooring system to perform as designed relies heavily on proper selection. Matching each use case with the right chemical resistant flooring is key to a having a facility looking great and functioning at peak level over the long term.

See our Chemical Resistance Guide and other technical resources on our website. Connect with a Sherwin-Williams High Performance Flooring expert for help with specifying an optimal flooring system for your facility.

THE SHERWIN-WILLIAMS DIFFERENCE

Sherwin-Williams High Performance Flooring delivers world-class industry subject matter expertise, unparalleled technical and specification service, and unmatched regional commercial team support to our customers around the globe.

TYPICAL PHYSICAL PROPERTIES

| | | |
|------------------------|----------------------------|--|
| Abrasion resistance | ASTM D4060 - 14 | 140.1 mg loss per 1000 cycles |
| Compressive strength | BS EN ISO 604:2003 | 9.6 MPa |
| Tensile strength | BS EN ISO 527 - 2:2012 | 3.6 MPa |
| Flexural strength | BS EN ISO 178:2010+A1:2013 | 3.2 N/mm ² |
| Bond strength | BS EN 13892-8:2002 | >3 N/mm ² (substrate failure) |
| Impact resistance | BS EN 1504-2:2004 | Class II |
| Temperature resistance | Temperatures up to 60°C | |
| Chemical resistance | Good | |
| Reaction to fire | BS EN 13501-1:2018 | B _{FL} - s1 |
| FeRFA category | 4 | |

**FIND YOUR
LOCAL CONTACT**

