

## FASTOP™ MULTI SYSTEMS

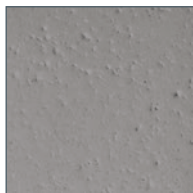
### POLYURETHANE HYGIENIC FLOORING

The FasTop Multi Systems provide hygienic, chemical and slip-resistant flooring solutions that are extremely hard wearing. The systems are designed for use in industrial and commercial environments such as food and beverage plants, breweries, commercial kitchens, dairies, manufacturing facilities, chemical processing plants, warehouses, garages and more.

#### COLOURS FOR SCREEDS FASTOP RS69 AND TG69



Light Grey



Mid Grey



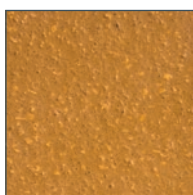
Dark Grey



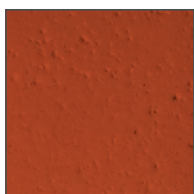
Black



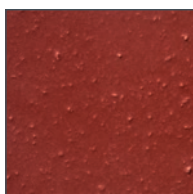
Buff



Marigold



Orange



Red



Green

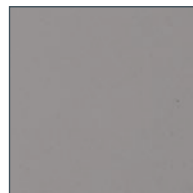


Blue

#### COLOURS FOR SELF LEVELLING SCREEDS - FASTOP SL23 AND SL45



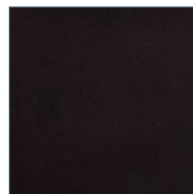
Light Grey



Mid Grey



Dark Grey



Black



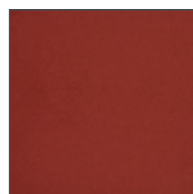
Buff



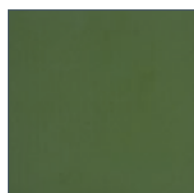
Marigold



Orange



Red

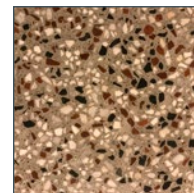


Green

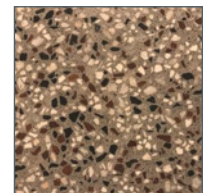


Blue

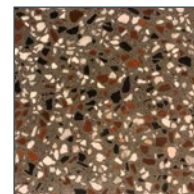
#### COLOURS FOR FASTOP TERRAZZO



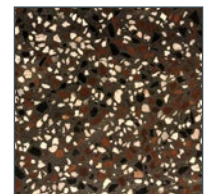
Light Grey



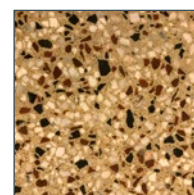
Mid Grey



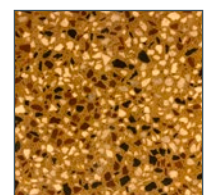
Dark Grey



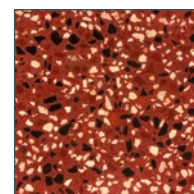
Black



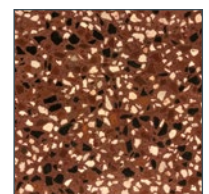
Buff



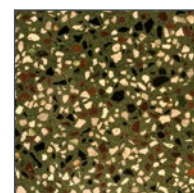
Marigold



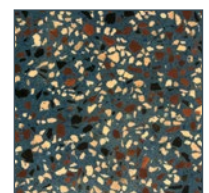
Orange



Red



Green



Blue

This reproduction approximates the actual color. Factors such as the type of product, degree of gloss, texture, size and shape of area, lighting, heat, or method of application may cause color variance. Substituting other manufacturers' colors may not be representative of our blends. Contact your Sherwin-Williams representative for details.

#### United Kingdom:

+44 (0)1204 556420  
flooring.enquiries@sherwin.com

#### Scandinavia:

+45 70213888  
emea.pm.exportsales@sherwin.com

#### Italy :

+39 327 173 2931  
emea.pm.Italy@sherwin.com

#### Rest of Europe and Africa:

+44 (0)1204 556454  
emea.pm.exportsales@sherwin.com

#### Middle East:

+971 4 8840200  
sales.me@sherwin.com

#### India:

+91 9871900878  
pmsales.india@sherwin.com

#### resinflooring.sherwin.eu

06/21 EMEA10065/V01/RF