

**SHERWIN
WILLIAMS®**

FASTOP™ SYSTEMS

POLYURETHANE CEMENT
HIGH PERFORMANCE FLOORING



DESIGNED TO PERFORM

resinflooring.sherwin.eu



FASTOP™ SYSTEMS

POLYURETHANE CEMENT
HIGH PERFORMANCE FLOORING

CONTENTS

FasTop TG69 screed systems	4
FasTop RS69 screed systems	5
FasTop SL45 self levelling systems	6
FasTop SL23 self levelling systems	7
FasTop DP uniform textured anti-slip screed systems	8
FasTop Terrazzo decorative screed systems	9
FasTop Topcoat coating systems	10
FasTop Topcoat SR textured coating systems	11
FasTop Industry underlayment screed systems	12
FasTop ancillary products	13
FasTop installation	14
FasTop colour range	15

FASTOP SYSTEM CERTIFICATIONS

FasTop systems are specifically designed for use within food manufacturing, food processing and food service industries. Our tried and tested range of food-safe, anti-slip resin flooring systems comply with strict hygiene and safety standards as stipulated by the HACCP International system (Hazard Analysis and Critical Control Point).

These requirements are specified by authorities such as the Global Food Safety Initiative (GFSI), the Food Standards Agency (FSA) and the European Food Safety Authority (EFSA) to ensure food factories maintain the highest standards of handling and production. The Sherwin-Williams flooring range being HACCP certified performs to these standards for food manufacturing, distilleries, wineries and breweries, dairies, meat processing, bakeries, confectionaries and pet food factories.



Members of
Campden BRI



FasTop systems are HACCP International certified as food safe, and Campden BRI certified as non-taint and odourless.

The FasTop polyurethane cement proven formulation has been tried and tested for over 20 years by some of the world's largest organisations. These systems provide hygienic, chemical resistant and slip resistant flooring solutions which are extremely hard wearing, making FasTop the ideal choice for the most demanding environments.

BENEFITS

- Slip resistant
- High chemical resistance
- Resistant to hot water and steam cleaning
- Self-sealing
- Matt finish
- Extremely hard wearing
- HACCP certified for food facilities.

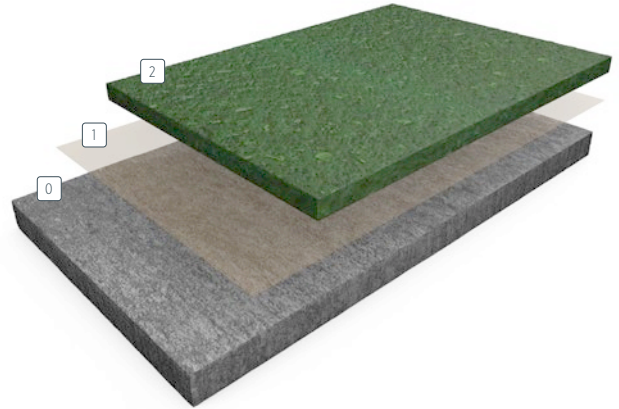
SCOPE OF USE

- Food manufacture and processing
- Chemical plants
- Medical and veterinary practices
- Brewing and distilling facilities
- Dairies
- Heavy duty plant and high traffic areas
- Engineering environments.

FASTOP™ TG69

POLYURETHANE CEMENT FLOOR SCREED SYSTEM

FasTop TG69 is a very heavy duty antimicrobial polyurethane cement floor screed system providing superb resistance against chemical attack, thermal shock and abrasion. A food grade non-taint and odourless product, providing slip resistance in wet and dry conditions. When installed at 9 mm thickness the system is resistant to steam cleaning, boiling water and process liquids up to 120°C and also suitable for freezer temperatures down to -40°C.



Traffic	Cure to service (hrs)		
	10°C	20°C	30°C
Light	24-36	12-16	8-12
Designed	48-72	36-48	24-36
Full cure	8 days	5-7 days	5 days

- ① **Substrate:**
- ① **Primer (optional):**
FasTop Multi Primer
- ② **Screed:**
FasTop Multi TG69

BENEFITS

- High chemical resistance
- Food safe and non-taint (HACCP and Campden BRI approved)
- Resistance to hot water and steam
- Self-sealing
- Excellent slip resistant finish
- Matt finish system
- Extremely hard wearing
- Non dusting

SCOPE OF USE

- Food manufacture and processing
- Brewing and beverage
- Dairies
- Commercial kitchens
- Pharmaceutical and chemical plant processing
- Abattoirs and meat processing facilities
- Heavy duty plant and traffic areas

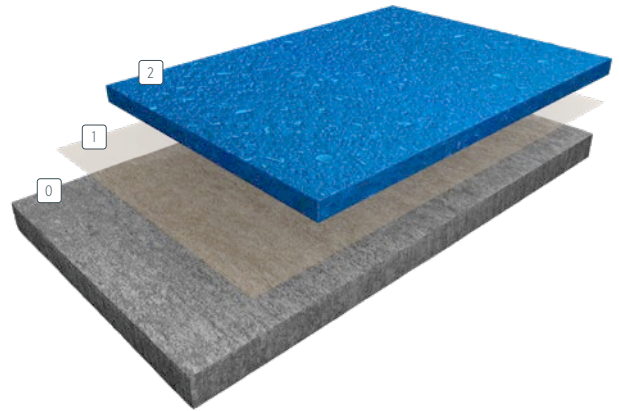
TYPICAL PHYSICAL PROPERTIES

Hardness @ 24 hours, Shore D	BS ISO 7619-1:2010	72
Abrasion resistance	EN 13892-5	AR 2
Compressive strength	EN13892-2	52.9 N/mm ²
Tensile strength	BS 6319-7	1.9 N/mm ²
Flexural strength	EN 13892-2	5.6 N/mm ²
Bond strength	EN13813	>3 N/mm ² (substrate failure)
Impact resistance	EN ISO 6272	>4
Temperature resistance	Tolerant of temperatures up to 120°C at 9 mm	
Chemical resistance	Excellent	
Reaction to fire	EN13501-1	B _{FL} - s1
UV stable	No	
FeRFA type	8	
System thickness	6-9 mm	
CE Marked screeds	BS EN 13813:2002	

FASTOP™ RS69

POLYURETHANE CEMENT RESIN RICH FLOOR SCREED SYSTEM

FasTop RS69 is a heavy duty resin rich antimicrobial polyurethane cement floor screed system providing superb resistance against chemical attack, thermal shock and abrasion. A food grade non-taint and odourless product, providing slip resistance in wet and dry conditions. For fast installation FasTop RS69 can be applied by rake, trowel or screedbox as a resin rich system. Resistant to steam cleaning, boiling water and process liquids up to 120°C and suitable for freezer temperatures down to -40°C at 9 mm thickness.



Traffic	Cure to service (hrs)		
	10°C	20°C	30°C
Light	24-36	12-16	8-12
Designed	48-72	36-48	24-36
Full cure	8 days	5-7 days	5 days

- ① **Substrate:**
- ② **Primer (optional):**
FasTop Multi Primer
- ③ **Screed:**
FasTop Multi RS69

BENEFITS

- High chemical resistance
- Resin rich system
- Resistance to hot water and steam
- Self sealing
- Excellent slip resistant finish
- Matt finish system
- Extremely hard wearing
- Non dusting
- Food safe and non-taint (HACCP and Campden BRI approved)

SCOPE OF USE

- Food manufacture and processing
- Brewing and beverage
- Dairies
- Commercial kitchens
- Pharmaceutical and chemical plant processing
- Abattoirs and meat processing facilities
- Heavy duty plant and traffic areas

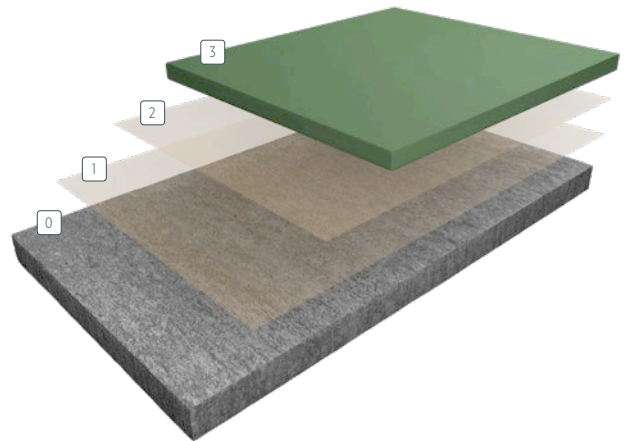
TYPICAL PHYSICAL PROPERTIES

Hardness @ 24 hours, Shore D	BS ISO 7619-1:2010	72
Abrasion resistance	EN 13892-5	AR 1
Compressive strength	EN13892-2	54 N/mm ²
Tensile strength	BS 6319-7	3.5 N/mm ²
Flexural strength	EN 13892-2	6.3 N/mm ²
Bond strength	EN13813	>3 N/mm ² (substrate failure)
Impact resistance	EN ISO 6272	>4
Temperature resistance	Tolerant of temperatures up to 120°C at 9 mm	
Chemical resistance	Excellent	
Reaction to fire	EN13501-1	B _{FL} - s1
UV stable	No	
FeRFA type	8	
System thickness	6-9 mm	
CE Marked screeds	BS EN 13813:2002	

FASTOP™ SL45

POLYURETHANE CEMENT SELF-LEVELLING FLOOR SCREED SYSTEM

FasTop SL45 is a 4-5 mm thick antimicrobial polyurethane cement self-levelling resin floor system which provides a heavy duty finish with superb resistance against chemical attack, hot water and abrasion. FasTop SL45 is a food grade, non-taint odourless product and provides a smooth profile making it ideal for food and beverage production areas where maximum hygienic standards are required. FasTop SL45 is also suitable for freezer temperatures down to -25°C.



Traffic	Cure to service (hrs)		
	10°C	20°C	30°C
Light	24-36	12-16	8-12
Designed	72-96	48-72	24-48
Full cure	8 days	5-7 days	5 days

- 0 **Substrate:**
- 1 **Primer:**
FasTop Multi Primer
- 2 **Primer (optional):**
FasTop Multi Primer
- 3 **Screed:**
FasTop Multi SL45

BENEFITS

- High chemical resistance
- Resistance to hot water
- Self-sealing
- Extremely hard wearing
- Food safe and non-taint, (HACCP and Campden BRI approved)
- Non dusting
- Matt finish

SCOPE OF USE

- Food manufacture and processing
- Brewing and beverage
- Dairies
- Commercial kitchens
- Pharmaceutical and chemical plant processing
- Abattoirs and meat processing facilities
- Heavy duty plant and traffic areas

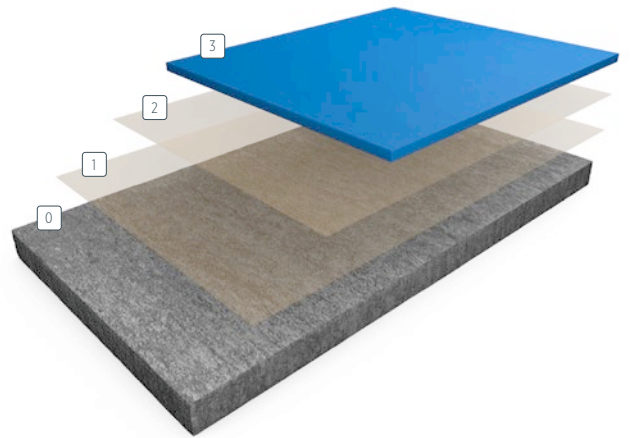
TYPICAL PHYSICAL PROPERTIES

Hardness @ 24 hours, Shore D	BS ISO 7619-1:2010	80
Abrasion resistance	BS EN 13892-5:2003	AR 0.5
Compressive strength	BS EN ISO 604:2003	54 MPa
Tensile strength	BS EN ISO 527-2:2012	7 N/mm ²
Flexural strength	BS EN ISO 178+A1:2013	14 N/mm ²
Bond strength	BS EN 13892-8:2002	>3 N/mm ² (substrate failure)
Impact resistance	EN ISO 6272	>4
Temperature resistance	Tolerant of temperatures up to 90°C at 5 mm	
Chemical resistance	Excellent	
Reaction to fire	BS EN 13501-1:2018	BFL - s1
UV stable	No	
FeRFA type	7	
System thickness	4-5 mm	
CE Marked screeds	BS EN 13813:2002	

FASTOP™ SL23

POLYURETHANE CEMENT SELF-LEVELLING FLOOR SCREED SYSTEM

FasTop SL23 is a 3 mm thick antimicrobial polyurethane cement self-levelling resin floor system which provides a heavy duty finish with superb resistance against chemical attack, hot water and abrasion. FasTop SL23 is a food grade, non-taint and odourless product making it ideal for food and beverage production areas where a smooth finish is required for maximum hygienic standards. FasTop SL23 is also suitable for freezer temperatures down to -20°C.



Traffic	Cure to service (hrs)		
	10°C	20°C	30°C
Light	24-36	12-16	8-12
Designed	72-96	48-72	24-48
Full cure	8 days	5-7 days	5 days

- 0 **Substrate:**
- 1 **Primer:** FasTop Multi Primer
- 2 **Primer (optional):** FasTop Multi Primer
- 3 **Screed:** FasTop Multi SL23

BENEFITS

- High chemical resistance
- Resistance to hot water
- Self-sealing
- Extremely hard wearing
- Food safe and non-taint (HACCP and Campden BRI approved)
- Non dusting
- Matt finish

SCOPE OF USE

- Food manufacture and processing
- Brewing and beverage
- Dairies
- Commercial kitchens
- Pharmaceutical and chemical plant processing
- Abattoirs and meat processing facilities
- Heavy duty plant and traffic areas

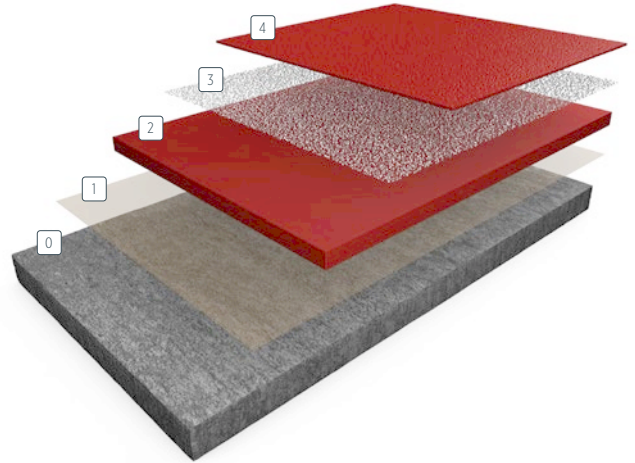
TYPICAL PHYSICAL PROPERTIES

Hardness @ 24 hours, Shore D	BS ISO 7619-1:2010	82
Abrasion resistance	BS EN 13892-5:2003	AR 0.5
Compressive strength	BS EN ISO 604:2003	43 MPa
Tensile strength	BS EN ISO 527-2:2012	7 N/mm ²
Flexural strength	BS EN ISO 178+A1:2013	26 N/mm ²
Bond strength	BS EN 13892-8:2002	>3 N/mm ² (substrate failure)
Impact resistance	EN ISO 6272	>4
Temperature resistance	Tolerant of temperatures up to 80°C at 3 mm	
Chemical resistance	Excellent	
Reaction to fire	BS EN 13501-1:2018	BFL – s1
UV stable	No	
FeRFA type	5	
System thickness	3 mm	
CE Marked screeds	BS EN 13813:2002	

FASTOP™ DP

POLYURETHANE CEMENT TEXTURED FLOOR SCREED SYSTEM

FasTop DP is a heavy duty polyurethane cement screed designed to create uniform anti-slip finishes whilst providing excellent thermal shock resistance for a variety of industrial environments. FasTop Multi DP is laid between 5-7 mm and broadcast with a choice of three aggregates to give an anti-slip finish in areas that are wet and/or exposed to greases and oils.



Traffic	Cure to service (hrs)		
	10°C	20°C	30°C
Light	24-36	12-16	8-12
Designed	72-96	48-72	24-48
Full cure	8 days	5-7 days	5 days

- 0 **Substrate:**
- 1 **Primer (optional):**
FasTop Multi Primer
- 2 **Screed:**
FasTop Multi DP
- 3 **Aggregate:**
Silica sand
- 4 **Seal coat:**
FasTop Multi T150

BENEFITS

- High chemical resistance
- Slip resistant texture
- Resistance to hot water
- Self-sealing
- Extremely hard wearing
- Non dusting
- Matt finish
- Food safe and non-taint (Campden BRI approved)

SCOPE OF USE

- Food manufacture and processing
- Brewing and beverage
- Dairies
- Commercial kitchens
- Pharmaceutical and chemical plant processing
- Abattoirs and meat processing facilities
- Heavy duty plant and traffic areas

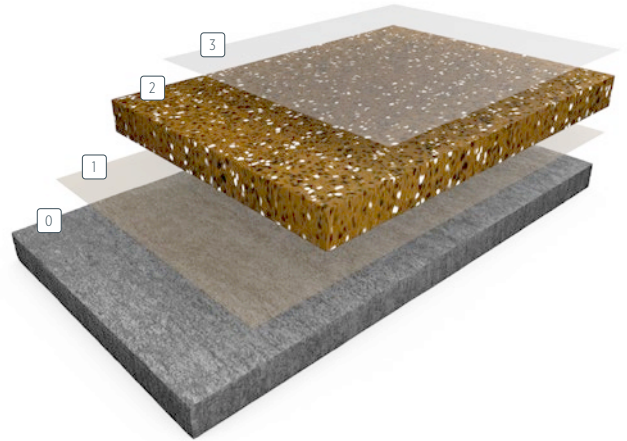
TYPICAL PHYSICAL PROPERTIES

Hardness @ 24 hours, Shore D	BS ISO 7619-1:2010	80
Abrasion resistance	BS EN 13892-4:2002	AR 4
Compressive strength	BS EN 31892-2:2002	34.6 MPa
Tensile strength	BS EN 13892-2:2002	2.4 N/mm ²
Flexural strength	BS 6319-7:1985	5.8 N/mm ²
Bond strength	BS EN 13892-8:2002	>2.8 N/mm ² (substrate failure)
Impact resistance	BS EN ISO 6272-1:2011	>4
Temperature resistance	Tolerant of temperatures up to 90°C at 5 mm	
Chemical resistance	Excellent	
Reaction to fire	BS EN 13501-1:2018	B _{FL} - s1
UV stable	No	
FeRFA type	7	
System thickness	6-8 mm	

FASTOP™ TERRAZZO

DECORATIVE POLYURETHANE CEMENT TERRAZZO FLOOR SCREED SYSTEM

FasTop Terrazzo is a decorative polyurethane cement terrazzo screed for industrial floors. A heavy duty impervious and attractive floor is achieved with grinding, polishing and sealing the surface which exposes the decorative aggregates. Processes and any spillages can be easily cleaned to maintain the highest standards where there is high wear and an aesthetic requirement for tough seamless flooring.



Traffic	Cure to service (hrs)		
	10°C	20°C	30°C
Light	24-36	12-16	8-12
Designed	72-96	48-72	24-48
Full cure	8 days	Up to 7 days	5 days

- 0 **Substrate:**
- 1 **Primer:**
FasTop Multi Primer
- 2 **Screed:**
FasTop Multi Terrazzo
- 3 **Seal coat:**
Resupen WB Clear Std/Matt

BENEFITS

- Very hard wearing and durable
- Decorative finish
- Varied decorative colour options
- Excellent abrasion and impact resistance
- Good chemical resistance
- Designed for easy to clean and smooth surfaces

SCOPE OF USE

- Seamless decorative finish for buildings
- Food factories
- Retail units
- Pharmaceutical areas
- Toilets and washrooms
- Engineering facilities
- Reception areas
- Production areas

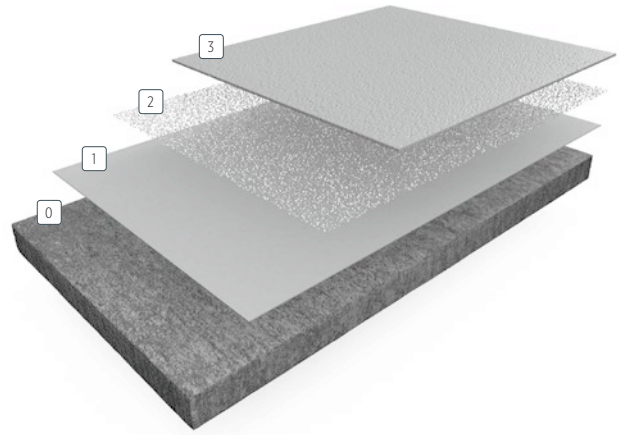
TYPICAL PHYSICAL PROPERTIES

Hardness @ 24 hours, Shore D	BS ISO 7619-1:2010	72
Abrasion resistance	BS EN 13892-4:2002	AR 1 (Less than 100 microns wear)
Compressive strength	BS EN 13892-2:2002	54 N/mm ²
Tensile strength	BS 6319-7:1985	3.5 N/mm ²
Flexural strength	BS EN 13892-2:2002	6.3 N/mm ²
Bond strength	BS EN 13892-8:2002	>3 N/mm ² (substrate failure)
Impact resistance	BS EN ISO 6272-1:2011	>4
Temperature resistance	Tolerant of temperatures up to 120°C at 9 mm	
Chemical resistance	Good	
Reaction to fire	BS EN 13501-1:2018	BFL – s1
UV stable	No	
FeRFA type	8	
System thickness	9 mm	

FASTOP™ TOPCOAT

POLYURETHANE CEMENT TEXTURED FLOOR COATING SYSTEM

FasTop Topcoat is a heavy duty floor coating system with a light anti-slip textured finish installed at a thickness around 0.5mm. It is applied by roller, brush or squeegee depending on the requirements and gives a hygienic finish that can be used for new concrete screeds as well as refreshing existing resin systems and existing cementitious and concrete substrates. The FasTop Multi Primer and FasTop Multi T150 top coat can be applied at smaller coverage rates if a greater system thickness is required.



- 0 **Substrate:**
- 1 **Primer:**
FasTop Multi Primer
- 2 **Aggregate (optional):**
Silica sand
- 3 **Top coat:**
FasTop Multi T150

Traffic	Cure to service (hrs)		
	10°C	20°C	30°C
Light	24-36	12-16	8-12
Designed	72-96	48-72	24-48
Full cure	8 days	5-7 days	5 days

BENEFITS

- High chemical resistance
- Slip resistant texture
- Resistance to hot water
- Hard wearing
- Non dusting
- Matt finish
- Food safe and non-taint (HACCP and Campden BRI approved)

SCOPE OF USE

- Food manufacture and processing
- Brewing and beverage
- Dairies
- Manufacturing areas
- Pharmaceutical and chemical plant processing
- Workshops
- Heavy duty plant and traffic areas

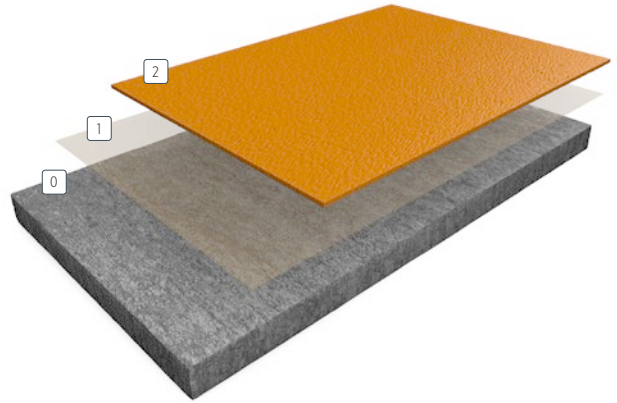
TYPICAL PHYSICAL PROPERTIES

Abrasion resistance	BS 8204-2:2003+A3:2011	225mg loss per 1000 cycles
Tensile strength	ASTM D 638	17.1 N/mm ²
Bond strength	BS EN 13892-8:2002	>3 N/mm ² (substrate failure)
Impact resistance	BS EN ISO 6272-1:2011	>4
Temperature resistance	Tolerant of temperatures up to 60°C	
Chemical resistance	Excellent	
Reaction to fire	BS EN 13501-1:2018	B _{fl} - s1
UV stable	No	
FeRFA type	3	
System thickness	0.5 mm	

FASTOP™ TOPCOAT SR

POLYURETHANE CEMENT HEAVY DUTY TEXTURED FLOOR COATING SYSTEM

FasTop Topcoat SR is a heavy duty polyurethane cement textured coating system designed for application as an anti-slip floor finish onto concrete and other substrates and FasTop flooring systems where required at a thickness of around 1.5 to 2.5 mm. It is applied by trowel and back rolled providing an anti-skid finish that can be used on vehicle decks or similar areas where a textured surface is required. FasTop Topcoat SR can be used on new screeds or for refreshing existing systems and screeds.



Traffic	Cure to service (hrs)		
	10°C	20°C	30°C
Light	24-36	12-16	8-12
Designed	72-96	48-72	24-48
Full cure	8 days	5-7 days	5 days

- 0 **Substrate:**
- 1 **Primer:**
FasTop Multi Primer (optional)
- 2 **Top coat:**
FasTop Multi T150 SR

BENEFITS

- High chemical resistance
- Anti-skid surface
- Resistance to hot water
- Hard wearing
- Non dusting
- Matt finish

SCOPE OF USE

- Intermediate vehicle decks
- Food manufacture and processing
- Brewing and beverage
- Dairies
- Manufacturing areas
- Pharmaceutical and chemical plant processing
- Workshops
- Heavy duty plant and traffic areas

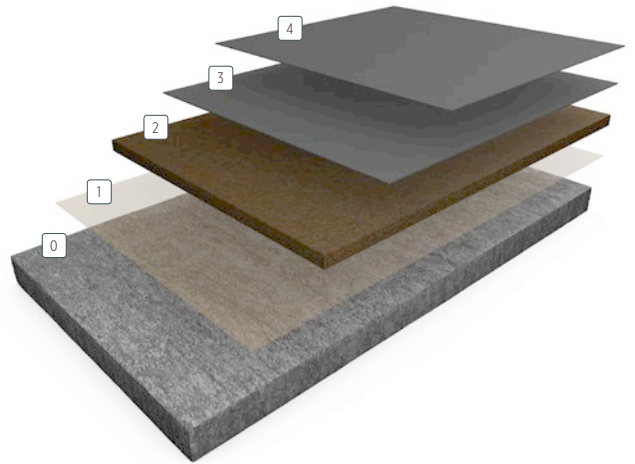
TYPICAL PHYSICAL PROPERTIES

Abrasion resistance	BS 8204-2:2003+A3:2011	225mg loss per 1000 cycles
Tensile strength	ASTM D 638	17.1 N/mm ²
Bond strength	BS EN 13892-8:2002	>3 N/mm ² (substrate failure)
Impact resistance	BS EN ISO 6272-1:2011	>4
Temperature resistance	Tolerant of temperatures up to 60°C	
Chemical resistance	Excellent	
Reaction to fire	BS EN 13501-1:2018	B _{f1} - s1
UV stable	No	
FeRFA type	3	
System thickness	1.5 - 2.5 mm	

FASTOP™ INDUSTRY

POLYURETHANE CEMENT SCREED WHICH IS POWER TROWELLED

FasTop Industry is a polyurethane cement system using a screed applied 'wet on wet' to a primer with a screed bar which is power trowelled to create a compact heavy duty flooring base screed between 5 to 150 mm's thickness. This is sealed with FasTop Multi T150 to create an impervious finish. Resuflor™ HB can be used if required as a final gloss finish. The screed can be hand laid up to a thickness of 100 mm. FasTop Industry provides an alternative to concrete screeds where fast cure is essential.



Traffic	Cure to service (hrs)		
	10°C	20°C	30°C
Light	24-36	12-16	8-12
Designed	48-72	36-48	24-36
Full cure	8 days	5-7 days	5 days

① **Substrate:**

② **Primer:**
Resuprime™ ST

③ **Screed:**
FasTop TR1000

④ **Grout coat:**
FasTop Multi T150

⑤ **Top coat:**
FasTop Multi T150
(1 or 2 coats)

BENEFITS

- Can be power trowelled
- Fast application and curing
- Smooth finishes can be achieved
- Matt finish system
- Extremely hard wearing
- Non dusting

SCOPE OF USE

- Industrial production areas
- Workshops
- Food and beverage areas
- Vehicle traffic areas
- Pharmaceutical and chemical plant processing
- Heavy duty plant and traffic areas
- Oil and gas processing areas

TYPICAL PHYSICAL PROPERTIES

Bond strength	EN 13813	>3 N/mm ² (substrate failure)
UV stable	No	
FeRFA type	6	
System thickness	5-150 mm	

ANCILLARY PRODUCTS

FASTOP MULTI WR COVING SYSTEM

The use of coved skirting's around food factory floors is standard practice to create a tanked resin system to enhance the washing down of areas for maximum hygienic standards. This enables a smooth transition to be made from floor to wall with a permanent finish which can be cleaned and will not harbour dirt and bacterial growth. FasTop resin coving cures to a much harder finish than concrete and provides a smooth finish for a long-term solution which resists hot water and impact. Coving would usually be formed with a radius at a thickness of around 4 mm on the vertical typically to a height of 150 mm though this could be lower or higher as required. The coving would usually be fixed to a stainless steel or plastic 'birds beak' trim at the top which is pre-installed to the wall/substrate.

In food factories, where maximum impact can occur against coving with pallet trucks and fork lift traffic a concrete kerb can be installed to withstand this. FasTop coving can be applied up and over this kerb to complete the resin floor finish with integrated skirtings and upstands creating a 'bunded' hygienic area.

BENEFITS

- Suitable for forming radius coves
- Seamless finish
- High chemical resistance
- Resistant to hot water and steam
- Matt finish
- Extremely hard wearing

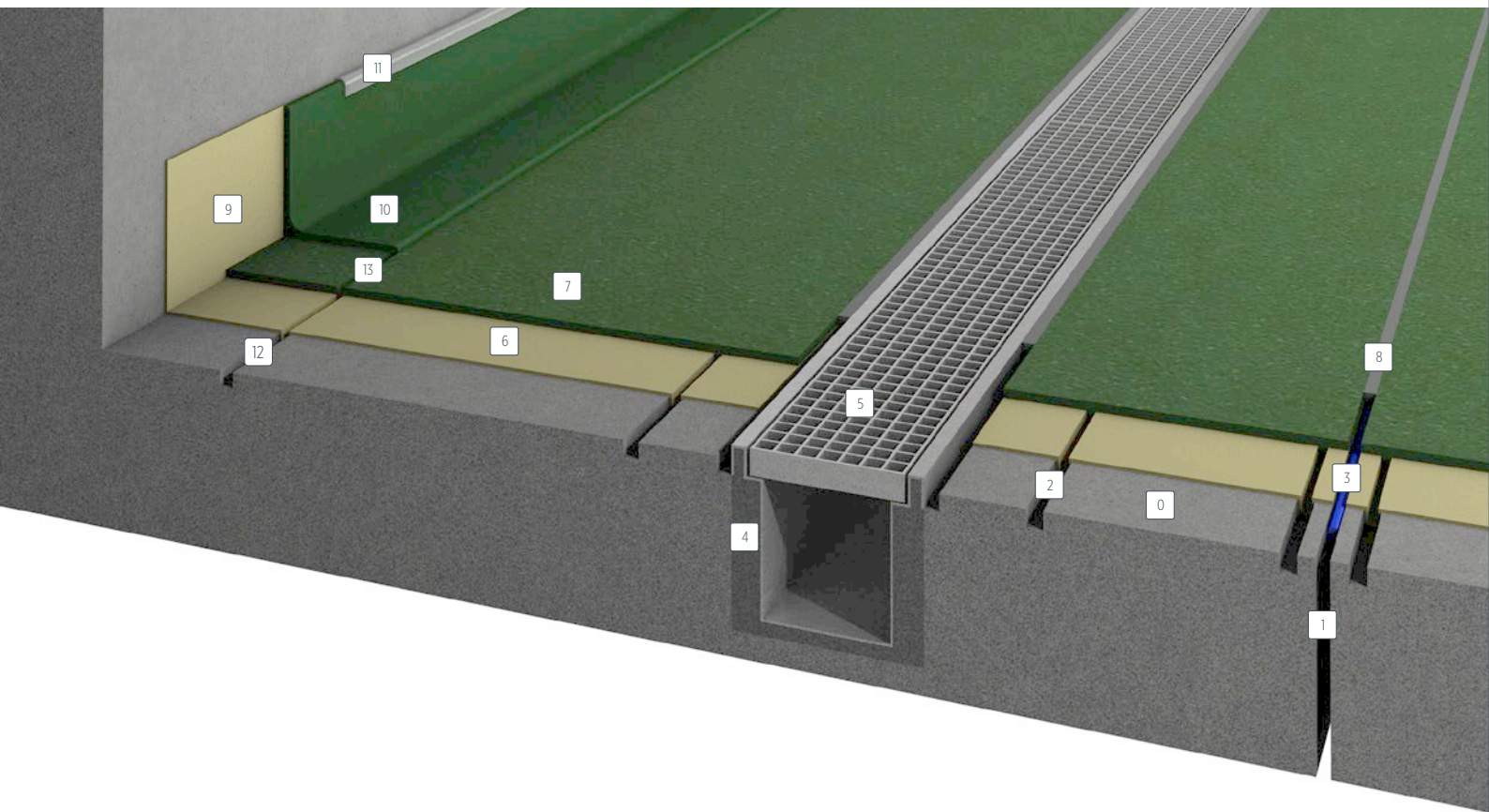
FASTOP MULTI BU

FasTop BU is a granite reinforced polyurethane cement infill screed designed to make good holes and indentations in a substrate prior to the application of FasTop self smoothing and FasTop screed systems. FasTop BU can also be used to back fill drainage channels and create falls across floor areas to control the flow of water and other liquids towards drains as required in a production facility. This is often essential in food factories where daily washdowns and regular cleaning are enhanced with correctly set floors promoting maximum hygiene and efficiency.

BENEFITS

- Can be applied from 6 mm to 100 mm
- Fast curing
- Self sealing
- High strength
- Matt finish
- Food safe
- Extremely hard wearing

FASTOP INSTALLATION



SCREED FLOORING SYSTEM

- 0 Substrate:**
Concrete/cementitious screed
- 1 Expansion joint:**
Pre-cut joint created when concrete is laid
- 2 Toe-in joint:**
Prevents shrinkage whilst product dries
- 3 Cavity filler:**
Backing rod/foam filler
- 4 Bedding mortar:**
FasTop Multi BU onto Resuprime™ ST
- 5 Drain:**
Stainless steel grid
- 6 Primer:**
FasTop Multi Primer or Resuprime ST/MVT
- 7 Screed:**
FasTop Multi TG69
- 8 Flexible jointing material:**
Epo-Flex™ JF
- 9 Coving Primer:**
Resuprime ST/MVT
- 10 Coving:**
FasTop Multi WR and FasTop Multi T150
- 11 Trim:**
Brushed steel/plastic
- 12 Anchor joint:**
Anchor in FasTop Multi TG69
- 13 Toe-in anchor joint:**
FasTop Multi WR 'toe-in' into FasTop Multi TG69

For application guidance please see our range of FasTop system guides which can be found on our website, or through contacting your local Sherwin-Williams High Performance Flooring representative.

COLOUR RANGES

AVAILABLE COLOURS FOR SELF LEVELLING SCREEDS - FASTOP SL23 AND SL45



Light Grey



Mid Grey



Dark Grey



Black



Buff



Marigold



Orange



Red



Green

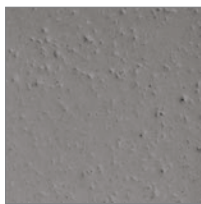


Blue

AVAILABLE COLOURS FOR SCREEDS - FASTOP RS69 AND TG69



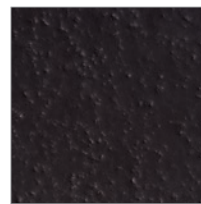
Light Grey



Mid Grey



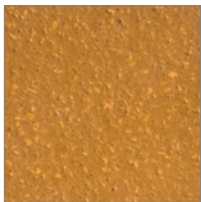
Dark Grey



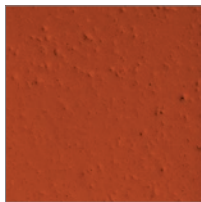
Black



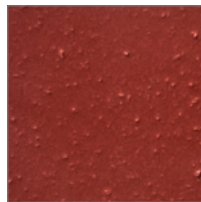
Buff



Marigold



Orange



Red

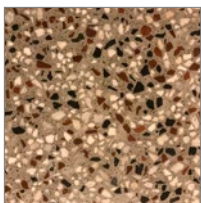


Green

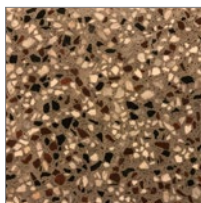


Blue

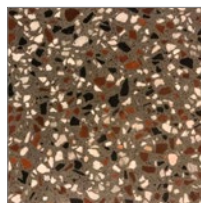
AVAILABLE COLOURS FOR FASTOP TERRAZZO



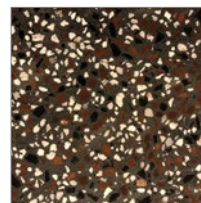
Light Grey



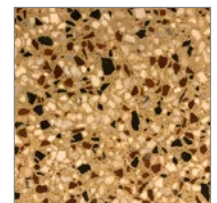
Mid Grey



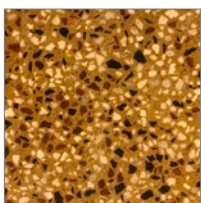
Dark Grey



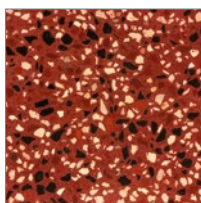
Black



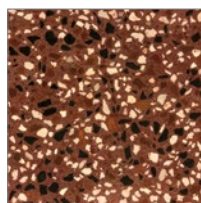
Buff



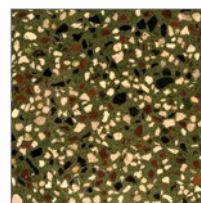
Marigold



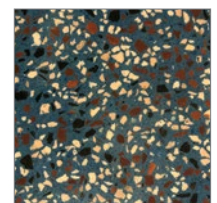
Orange



Red



Green



Blue

FASTOP™ SYSTEMS

POLYURETHANE CEMENT
HIGH PERFORMANCE FLOORING

DESIGNED TO PERFORM

Sherwin-Williams Protective & Marine delivers world-class industry subject matter expertise, unparalleled technical and specification service, and unmatched regional commercial team support to our customers around the globe. Our broad portfolio of high-performance coatings and systems that excel at combating corrosion helps customers achieve smarter, time-tested asset protection. We serve a wide array of markets across our rapidly growing international distribution footprint, including oil and gas, water and wastewater, bridge and highway, steel fabrication, flooring, food and beverage, rail and power, marine and passive fire protection.

**SHERWIN
WILLIAMS®**

United Kingdom:

+44 (0)1204 556420
flooring.enquiries@sherwin.com

Scandinavia:

+45 70213888
emea.pm.exportsales@sherwin.com

Italy:

+39 327 173 2931
emea.pm.Italy@sherwin.com

Rest of Europe and Africa:

+44 (0)1204 556454
emea.pm.exportsales@sherwin.com

Middle East:

+971 4 8840200
sales.me@sherwin.com

India:

+91 9871900878
pmsales.india@sherwin.com