

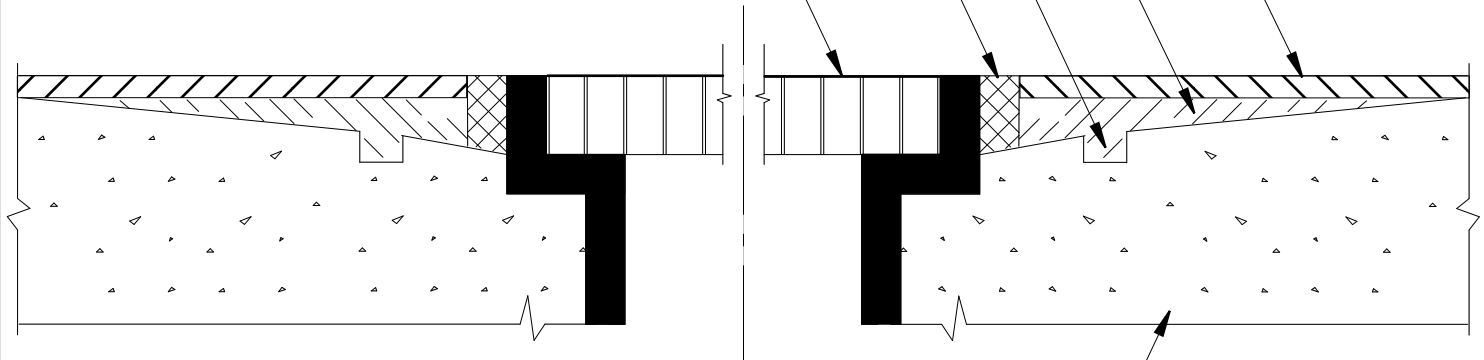
1/4" POLY-CRETE FLOORING
CEMENTITIOUS URETHANE FLOORING

POLY-CRETE WR

TYPICAL KEYWAY 1/4" x 1/4"

POLYUREA JOINT SEALANT
(1" DEEP X 1/4" WIDE)

DRAIN COVER



NEW CONCRETE -
RECESS CONCRETE TO A
1" DEPTH AROUND TRENCH DRAIN

**SHERWIN
WILLIAMS®**

HIGH
PERFORMANCE
FLOORING

sherwin-williams.com/resinflooring
(660) 638-5089

TITLE

POLY-CRETE FLOORING

STAINLESS STEEL CHANNEL DRAIN DETAIL

DATE

2/25

SCALE

NTS

DWG NO.

PCMD-11A

PROJECT