

## ACCELERA® C

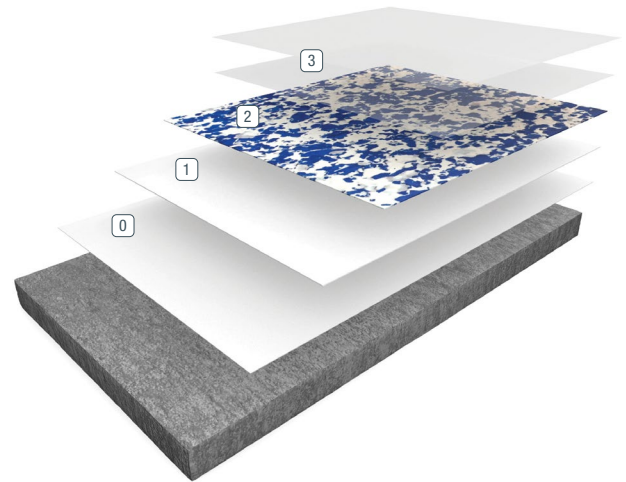
Accelera C is a seamless high solids, decorative Macro or Micro vinyl chip flooring system featuring an extremely quick curing time. Combining durability, UV stability and excellent chemical resistance, it's the ideal choice for 24/7 operations or anywhere minimal interruption to operations is required.

### BENEFITS

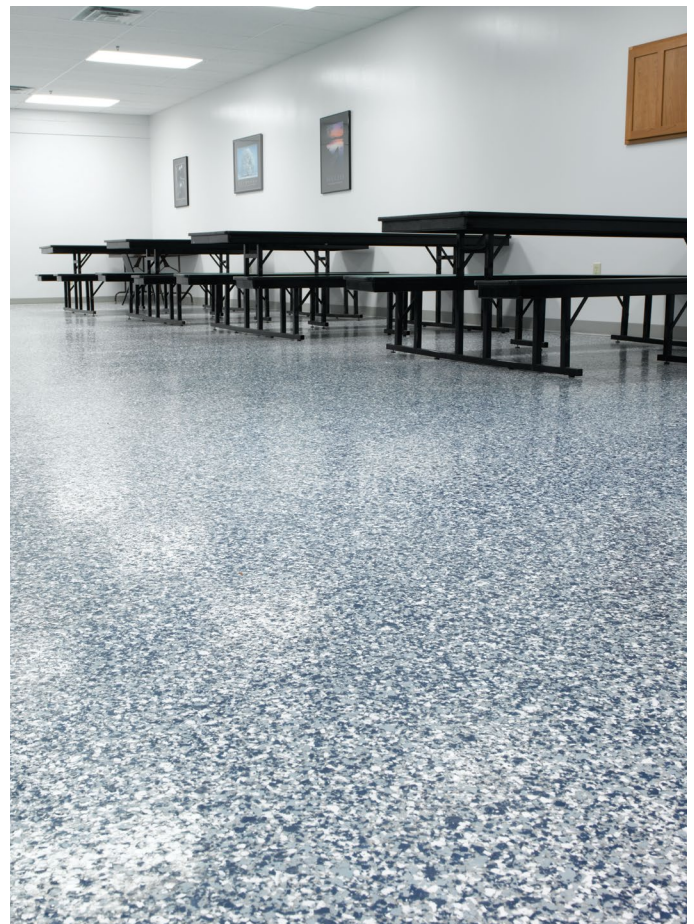
- Quick cure — Accelerated curing time as fast as 2 hours per coat
- Long lasting — Seamless flooring systems for years of service with minimal maintenance
- Wear/chemical resistant — High-quality topcoat for superior wear and chemical resistance
- Decorative — Multiple blends of Macro or Micro vinyl chip broadcast for a unique look
- Non-slip — Textured finishes aid in a safer floor, even when wet

### USES

- Hospitals
- Cleanrooms
- Laboratories
- Pharmaceutical
- Lobbies
- Showrooms
- Restrooms
- Veterinary operating rooms
- Locker rooms
- Retail
- Schools
- Supermarkets
- Cafeterias
- Dining areas



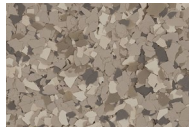
- 0 Primer
- 2 Second Broadcast
- 1 Base Coat/Broadcast
- 3 Grout/Seal Coat



FEATURED COLORS



Flaxseed



Ocelot



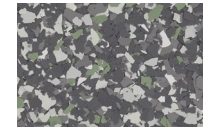
Almond Milk



Agave



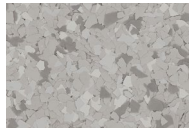
Kingsnake



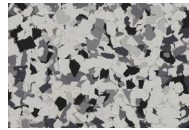
Korat



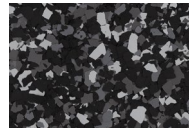
Chinchilla



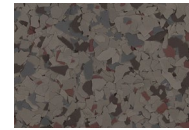
Limestone



Greyhound



Black Bean



Speckled Ash



Moon

Unlimited standard and custom blends available. Please see Deco Flake Color Cards for the extensive collection of standard blends or use our Flooring Visualizer Tool to create your own custom blend at [floorvisualizer.sherwin-williams.com](http://floorvisualizer.sherwin-williams.com). This reproduction approximates the actual color. Factors such as the type of product, degree of gloss, texture, size and shape of the area, lighting, heat or method of application may cause color variance. Contact your Sherwin-Williams representative for details.

ABOUT CHEMICAL RESISTANCE

Sherwin-Williams High Performance Flooring offers a broad range of systems to accommodate nearly every industrial, commercial and institutional setting. Each flooring system includes a standard chemical-resistant topcoat or surface proven to perform under typical conditions.

Important considerations:

- The combination of cleaning solutions, sanitizing chemicals, processing substances and products found in any operational setting is unique.
- Knowing exactly which materials are present — as well as their concentrations and typical exposure times before cleanup — is critical for proper flooring system selection.
- During the specification process, a flooring system’s standard chemical-resistant topcoat may get replaced with one better suited to unique facility conditions.

The ability of a flooring system to perform as designed relies heavily on proper selection. Matching each use case with the right chemical-resistant flooring is key to having a facility looking great and functioning at peak level over the long term.

See our Chemical Resistance Guide and other technical resources on our website. Connect with a Sherwin-Williams High Performance Flooring expert for help with specifying an optimal flooring system for your facility.

TYPICAL PHYSICAL PROPERTIES

Weight Solids, % (Resin/Hardener)	96%
VOC	33 g/L
Compressive Strength, ASTM C-579	12,500 psi
Tensile Strength, ASTM D-638	3,700 psi
Service Temperature	Up to 200°F
Taber Abrasion Resistance (ASTM D-4060) ASTM D-4060, 1000g load, 1000 cycles, CS-17 wheel	25 mg
Static Coefficient of Friction* (ANSI B101.1)	> 0.6
Dynamic Coefficient of Friction - Wet* (ANSI A326.3)	> 0.42
Film Hardness (ASTMD D-4366, seconds, ultimate)	90
Gloss (ASTM D-523) 60°	91
Pot Life at 70°F, 50% RH	10-15 min
Working Time at 70°F, 50% RH	15 min
Re-coat Window at 70°F, 50% RH	16 hours
Foot Traffic (per coat): 80°F, 50% RH (20% RH w/LH resin)	2.5-3 hours
70°F, 50% RH (20% RH w/LH resin)	3-4 hours
60°F, 50% RH (20% RH w/LH resin)	4-5 hours
Full Service	24 hours
Full Chemical Resistance	7 days
Flame Spread Index, ASTM E-84	Class B

\*Sherwin-Williams High Performance Flooring systems can be built to meet or exceed the requirements of Static or Dynamic Coefficient of Friction testing per installation. Contact your Sherwin-Williams territory sales manager or tech representative for more information on alternative textures, grit/grip additives, or smooth coatings for your specific environment. A sample should always be obtained and tested prior to purchase for any non-slip flooring system.

THE SHERWIN-WILLIAMS DIFFERENCE

Sherwin-Williams High Performance Flooring delivers world-class industry subject matter expertise, unparalleled technical and specification service, and unmatched regional commercial team support to our customers around the globe.

United States & Canada

[sherwin-williams.com/resin-flooring](http://sherwin-williams.com/resin-flooring)  
[swflooding@sherwin.com](mailto:swflooding@sherwin.com)