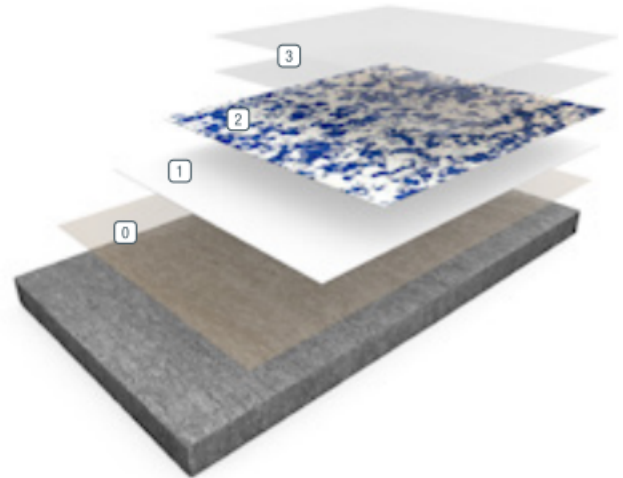


ACCELERA® DECO FLAKE SB

Sherwin-Williams Accelera Deco Flake SB is a quick-turnaround, mosaic-patterned floor covering. Decorative vinyl chips and high-gloss polyaspartic resin are applied in a single broadcast, resulting in a nominal 1/16" thick surface. The coating's innovative base chemistry enables fast-cure installation and provides tough chemical-resistant protection.



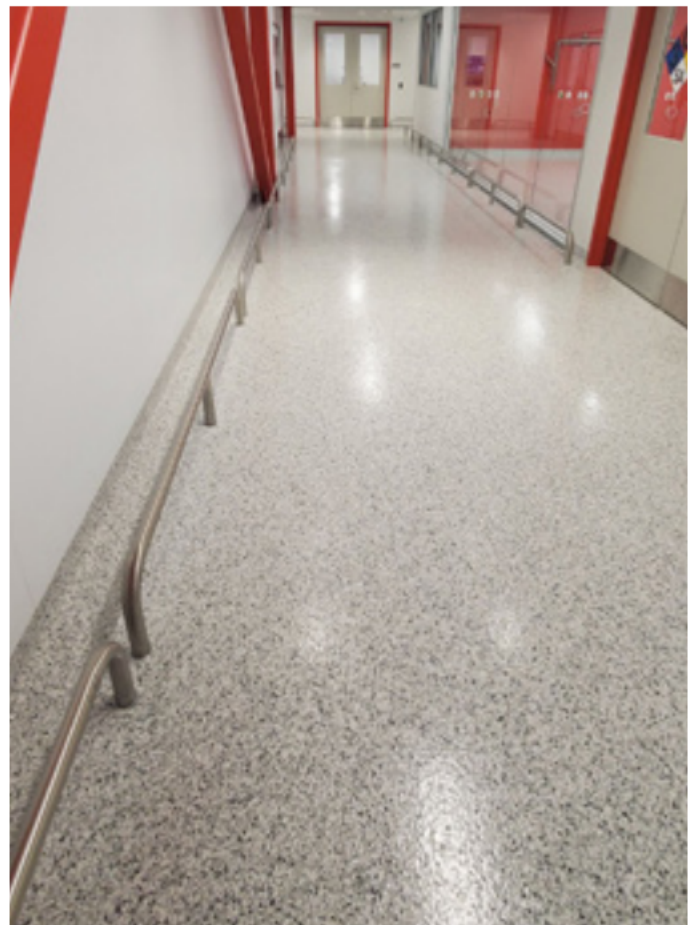
- 0 Primer
- 1 Basecoat
- 2 Broadcast
- 3 Grout/Seal Coat

BENEFITS

- Aesthetically pleasing appearance
- Limitless color options
- Seamless and sanitary
- Chemical- and stain-resistant
- High-gloss finish
- Contributes to LEED v4 credits

USES

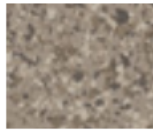
- Nursing homes and healthcare facilities
- Clean rooms and pharmaceutical facilities
- Garage and shop floors
- Locker rooms and restrooms
- Schools and cafeterias



FEATURED COLORS



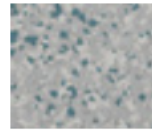
Flaxseed



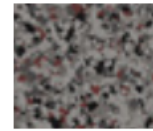
Ocelot



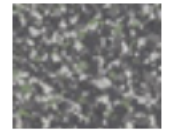
Almond Milk



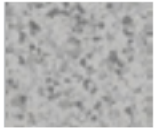
Agave



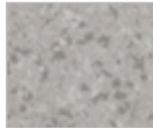
Kingsnake



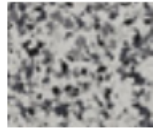
Korat



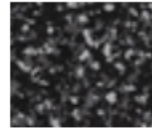
Chinchilla



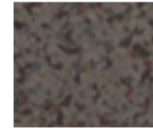
Limestone



Greyhound



Black Bean



Speckled Ash



Moon

Unlimited standard and custom blends available. Please see Accelera Deco Flake SB Color Cards for the extensive collection of standard blends or use our Flooring Visualizer Tool to create your own custom blend at floorvisualizer.sherwin-williams.com. This reproduction approximates the actual color. Factors such as the type of product, degree of gloss, texture, size and shape of area, lighting, heat or method of application may cause color variance. Contact your Sherwin-Williams representative for details.

ABOUT CHEMICAL RESISTANCE

Sherwin-Williams High Performance Flooring offers a broad range of systems to accommodate nearly every industrial, commercial and institutional setting. Each flooring system includes a standard chemical-resistant topcoat or surface proven to perform under typical conditions.

Important considerations:

- The combination of cleaning solutions, sanitizing chemicals, processing substances and products found in any operational setting is unique.
- Knowing exactly which materials are present – as well as their concentrations and typical exposure times before cleanup – is critical for proper flooring system selection.
- During the specification process, a flooring system’s standard chemical-resistant topcoat may get replaced with one better suited to unique facility conditions.

The ability of a flooring system to perform as designed relies heavily on proper selection. Matching each use case with the right chemical-resistant flooring is key to a having a facility looking great and functioning at peak level over the long term.

See our chemical-resistance Guide and other technical resources on our website. Connect with a Sherwin-Williams High Performance Flooring expert for help with specifying an optimal flooring system for your facility.

TYPICAL PHYSICAL PROPERTIES

Color	Custom color blends available
Abrasion Resistance ASTM D4060, CS-17 Wheel, 1,000 cycles	80 mg/loss
Adhesion to Concrete ASTM D4541	425 psi (concrete failed)
Flammability	Self-extinguishing over concrete
Impact Resistance MIL-D-3134J	Direct, 100 inch-pounds
Resistance to Elevated Temperatures ASTM D2794	No slip or flow at required temperature of 158°F

ASTM D = Resin only

THE SHERWIN-WILLIAMS DIFFERENCE

Sherwin-Williams High Performance Flooring delivers world-class industry subject matter expertise, unparalleled technical and specification service, and unmatched regional commercial team support to our customers around the globe.

United States & Canada

sherwin-williams.com/resin-flooring
swflooring@sherwin.com