

HYBRI-FLEX® AC ONE

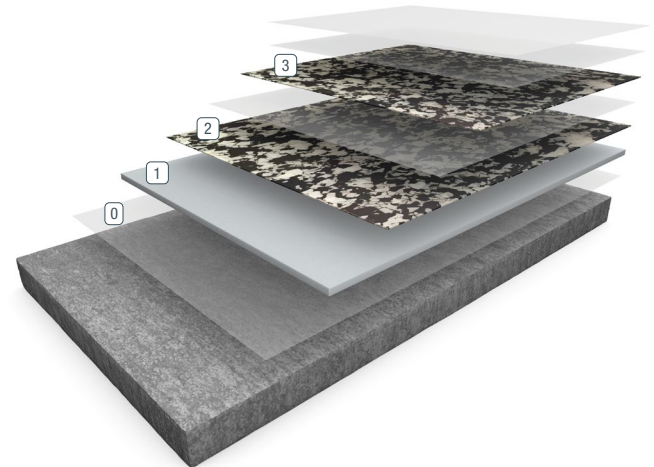
Hybri-Flex AC One is a seamless 3/16" decorative chip floor system featuring a highly moisture tolerant self-priming and self-leveling body coat topped with a double broadcast of decorative Macro or Micro vinyl chip aggregate and finished with an Accelera® One fast-curing, low-odor topcoat for a superior chemical- and abrasion-resistant finish.

BENEFITS

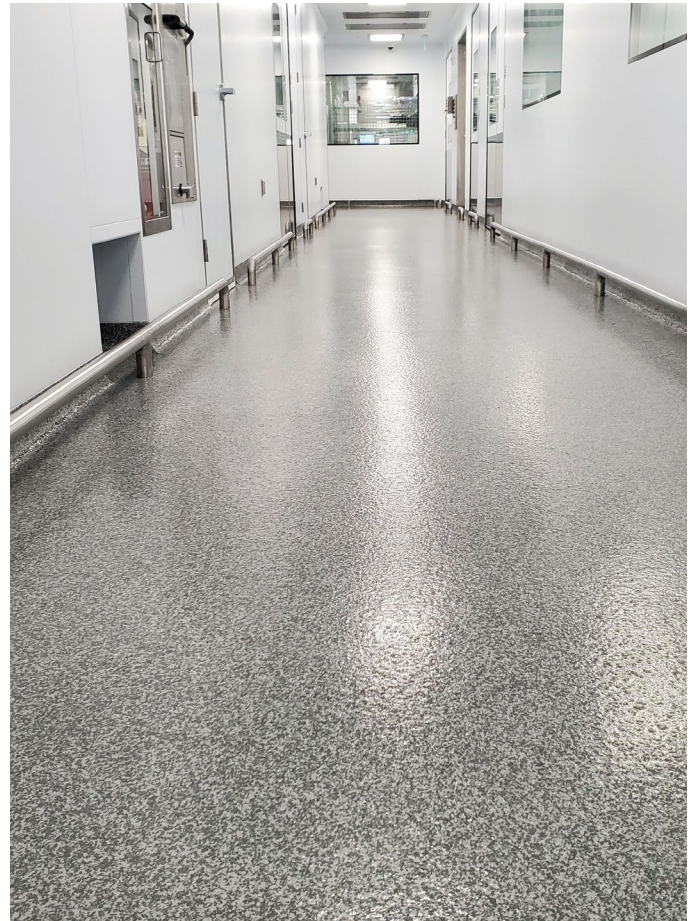
- Self-leveling — A uniform, more even floor system
- Moisture mitigating — Installs in more environments, including those with high moisture levels up to 99% RH
- Decorative — Multiple blends of Macro or Micro sized vinyl chips for a unique look
- Thermal shock resistance — Usable in harsh environments with high thermal cycling or rapid changes in temperature

USES

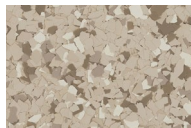
- Hospitals
- Restrooms
- Cleanrooms
- Retail
- Laboratories
- Schools
- Pharmaceutical
- Supermarkets
- Lobbies



- | | |
|-----------------------|--------------------|
| ① Primer | ② Second Broadcast |
| ① Base Coat/Broadcast | ③ Grout/Seal Coat |



FEATURED COLORS



Flaxseed



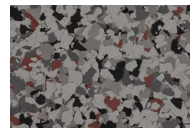
Ocelot



Almond Milk



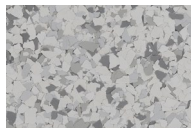
Agave



Kingsnake



Korat



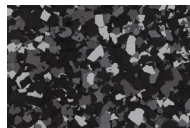
Chinchilla



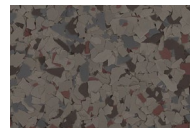
Limestone



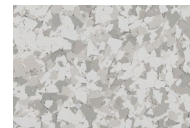
Greyhound



Black Bean



Speckled Ash



Moon

Standard and custom color blends available. Please see the Sherwin-Williams High Performance Flooring Deco Flake Color Card for details or envision a color in your space using our Flooring Visualizer Tool at floorvisualizer.sherwin-williams.com. This reproduction approximates the actual color. Factors such as the type of product, degree of gloss, texture, size and shape of area, lighting, heat or method of application may cause color variance. Contact your Sherwin-Williams representative for details.

ABOUT CHEMICAL RESISTANCE

Sherwin-Williams High Performance Flooring offers a broad range of systems to accommodate nearly every industrial, commercial and institutional setting. Each flooring system includes a standard chemical-resistant topcoat or surface proven to perform under typical conditions.

Important considerations:

- The combination of cleaning solutions, sanitizing chemicals, processing substances and products found in any operational setting is unique.
- Knowing exactly which materials are present — as well as their concentrations and typical exposure times before cleanup — is critical for proper flooring system selection.
- During the specification process, a flooring system's standard chemical-resistant topcoat may get replaced with one better suited to unique facility conditions.

The ability of a flooring system to perform as designed relies heavily on proper selection. Matching each use case with the right chemical-resistant flooring is key to having a facility looking great and functioning at peak level over the long term.

See our Chemical Resistance Guide and other technical resources on our website. Connect with a Sherwin-Williams High Performance Flooring expert for help with specifying an optimal flooring system for your facility.

TYPICAL PHYSICAL PROPERTIES

60 Gloss, ASTM D-523	90+
Impact Resistance, ASTM D-2794	>160
Bond Strength to Concrete, ASTM D-4541	400 psi (substrate fails)
Compressive Strength, ASTM D-695	16,000 psi
Solids by Volume	100%
Adhesion, ASTM D-4541	400 psi
Hardness (Shore D), ASTM D-2240	70
Flexibility (1/4: Cylindrical mandrel), ASTM D-1737	Pass
Elongation, ASTM D-2370	9%
Tensile Strength, ASTM D-2370	7,000 psi
Abrasion Resistance CS-10 Wheel, 1000 g Load, 1000 cycles, ASTM D-4060	27 mg
Flame Spread Index, ASTM E84	Class B (Type II)
VOC Content	0 g/L

THE SHERWIN-WILLIAMS DIFFERENCE

Sherwin-Williams High Performance Flooring delivers world-class industry subject matter expertise, unparalleled technical and specification service, and unmatched regional commercial team support to our customers around the globe.

United States & Canada

sherwin-williams.com/resin-flooring
swflooring@sherwin.com