

## HYBRI-FLEX® AQ ONE

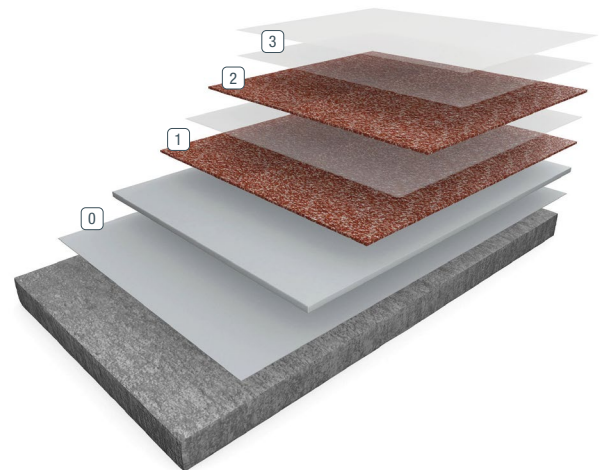
Hybri-Flex AQ One is a seamless 1/4" decorative quartz floor system featuring a highly moisture tolerant self-priming and self-leveling body coat topped with a double broadcast of decorative quartz aggregate and finished with an Accelera® One fast-curing, low-odor topcoat for a superior chemical and abrasion resistant finish.

### BENEFITS

- Self-leveling — A uniform, more even floor system
- Moisture mitigating — Installs in more environments, including those with high moisture levels up to 99% RH
- Decorative — Multiple blends of pigmented quartz aggregate for a unique look
- Non-slip — Textured finishes aid in a safer floor, even when wet
- Thermal shock resistance — Usable in harsh environments with high thermal cycling or rapid changes in temperature

### USES

- Hospitals
- Restrooms
- Cleanrooms
- Retail
- Laboratories
- Schools
- Pharmaceutical
- Supermarkets
- Lobbies

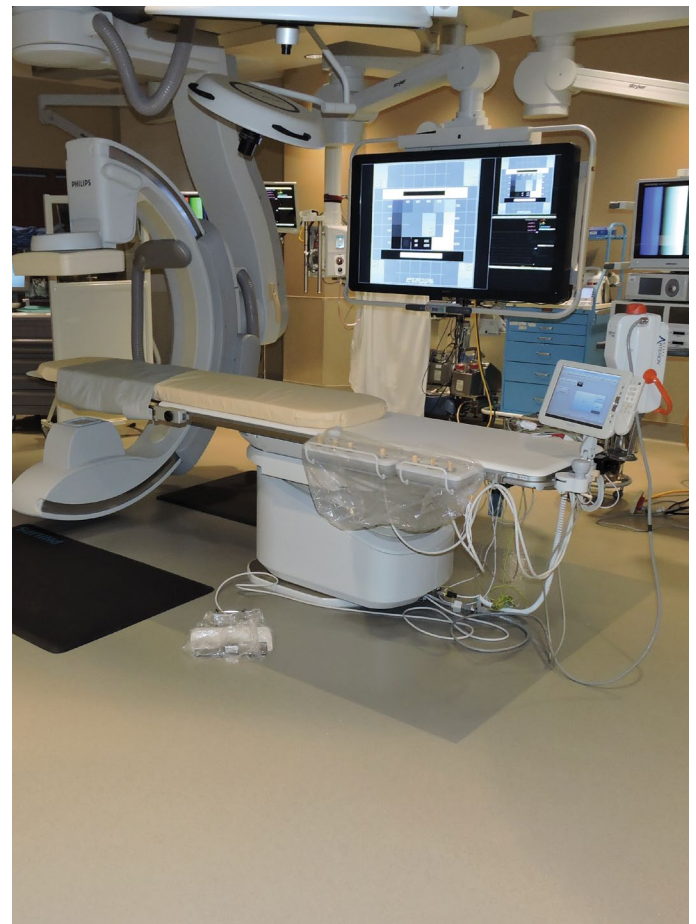


0 Primer

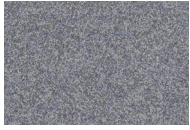
2 Second Broadcast

1 Base Coat/Broadcast

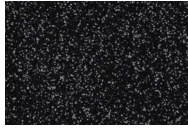
3 Grout/Seal Coat



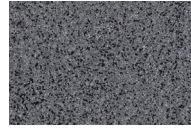
## FEATURED COLORS



Blue Slate



Night Sky



New Granite



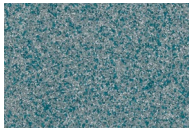
Brisket



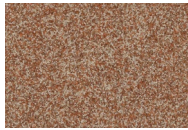
Brindle



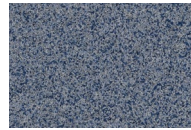
Americano



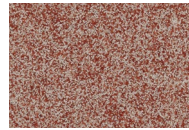
Lagoon



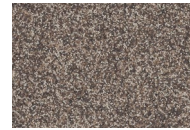
Autumn Spice



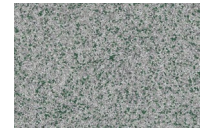
Seascape



Cardinal



Mud Pie



Prairie

Unlimited standard and custom blends available. Please see Deco Quartz Color Cards for the extensive collection of standard blends or use our Flooring Visualizer Tool to create your own custom blend at [floorvisualizer.sherwin-williams.com](http://floorvisualizer.sherwin-williams.com). This reproduction approximates the actual color. Factors such as the type of product, degree of gloss, texture, size and shape of area, lighting, heat or method of application may cause color variance. Contact your Sherwin-Williams representative for details.

## ABOUT CHEMICAL RESISTANCE

Sherwin-Williams High Performance Flooring offers a broad range of systems to accommodate nearly every industrial, commercial and institutional setting. Each flooring system includes a standard chemical-resistant topcoat or surface proven to perform under typical conditions.

### Important considerations:

- The combination of cleaning solutions, sanitizing chemicals, processing substances and products found in any operational setting is unique.
- Knowing exactly which materials are present — as well as their concentrations and typical exposure times before cleanup — is critical for proper flooring system selection.
- During the specification process, a flooring system's standard chemical-resistant topcoat may get replaced with one better suited to unique facility conditions.

The ability of a flooring system to perform as designed relies heavily on proper selection. Matching each use case with the right chemical-resistant flooring is key to having a facility looking great and functioning at peak level over the long term.

See our Chemical Resistance Guide and other technical resources on our website. Connect with a Sherwin-Williams High Performance Flooring expert for help with specifying an optimal flooring system for your facility.

## TYPICAL PHYSICAL PROPERTIES

60 Gloss, ASTM D-523	90+
Impact Resistance, ASTM D-2794	>160
Bond Strength to Concrete, ASTM D-4541	400 psi (substrate fails)
Compressive Strength, ASTM D-695	17,500 psi
Solids by Volume	100
Adhesion, ASTM D-4541	400 psi
Hardness, ASTM D-3363	3H
Hardness, ASTM D-2134	40+
QUV, UVB-373/1500 hrs	>90% gloss retention
Flexibility (1/4" Cylindrical mandrel), ASTM D-1737	Pass
Elongation, ASTM D-2370	9%
Tensile Strength, ASTM D-2370	7,000 psi
Abrasion Resistance CS-10 Wheel, 1000 g Load, 1000 cycles, ASTM D-4060	27 mg
Flame Spread Index, ASTM E84	Class B (Type II)
VOC Content	<50 g/L
Water Absorption, ASTM D-570	0.04%

## THE SHERWIN-WILLIAMS DIFFERENCE

Sherwin-Williams High Performance Flooring delivers world-class industry subject matter expertise, unparalleled technical and specification service, and unmatched regional commercial team support to our customers around the globe.

### United States & Canada

[sherwin-williams.com/resin-flooring](http://sherwin-williams.com/resin-flooring)  
[swflooring@sherwin.com](mailto:swflooring@sherwin.com)