

## HYBRI-FLEX® EQ

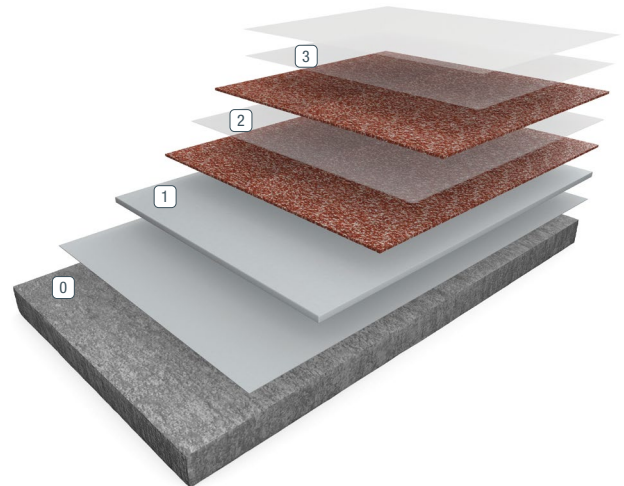
Hybri-Flex EQ is a seamless, nominal 3/16" - 1/4" decorative quartz floor system featuring a moisture tolerant self-priming and self-leveling body coat topped with a double broadcast of decorative quartz aggregate and finished with a Resutile AT topcoat for a chemical-, UV- and wear-resistant urethane topcoat.

### BENEFITS

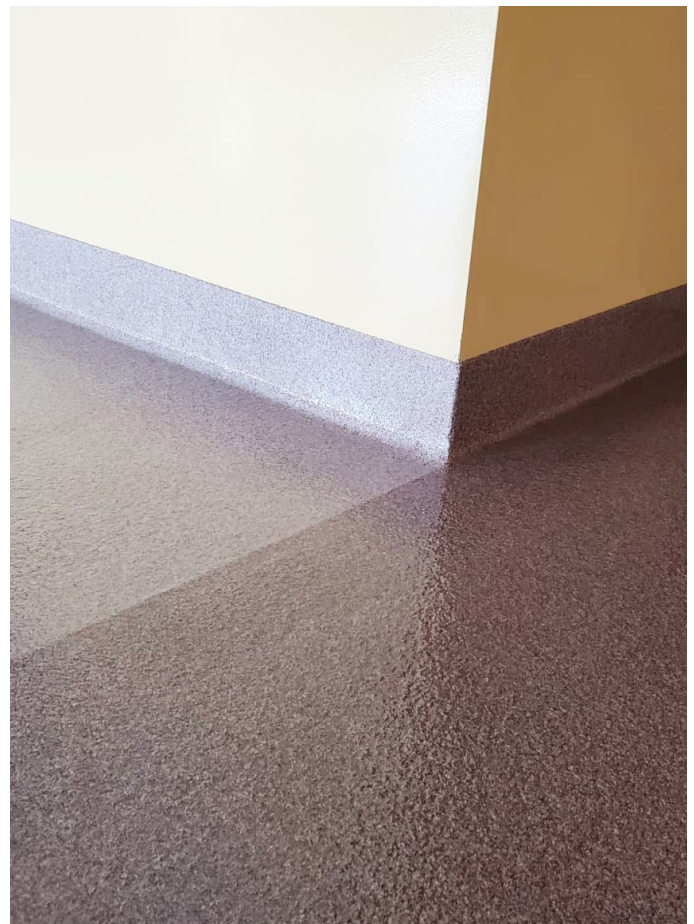
- Self-leveling — A uniform, more even floor system
- Abrasion resistance — Resutile AT topcoat delivers superior toughness
- Moisture mitigating — Can be applied to high-moisture concrete and is capable of handling high soluble ion (salts) contamination, reducing the risk of moisture-related coating failure
- Decorative — Multiple blends of pigmented quartz aggregate for a unique look
- Slip resistant — Textured finishes aid in a safer floor, even when wet
- Thermal cycling resistant — Usable in environments with thermal cycling or changes in temperature

### USES

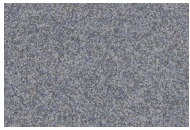
- Cleanrooms
- Laboratories
- Pharmaceutical
- Lobbies
- Kennels
- Restrooms
- Retail
- Schools
- Supermarkets



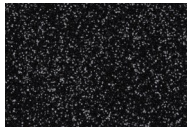
- 0 Primer
- 1 Base Coat/Broadcast
- 2 Second Broadcast
- 3 Grout/Seal Coat



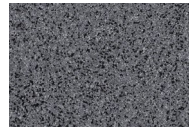
FEATURED COLORS



Blue Slate



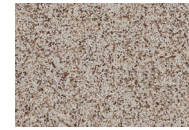
Night Sky



New Granite



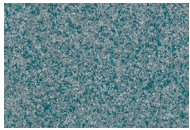
Brisket



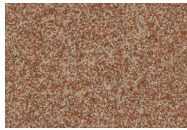
Brindle



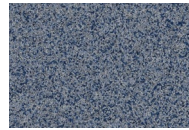
Americano



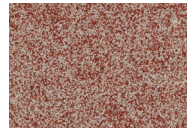
Lagoon



Autumn Spice



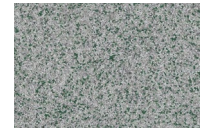
Seascape



Cardinal



Mud Pie



Prairie

Unlimited standard and custom blends available. Please see Deco Quartz Color Cards for the extensive collection of standard blends or use our Flooring Visualizer Tool to create your own custom blend at floorvisualizer.sherwin-williams.com. This reproduction approximates the actual color. Factors such as the type of product, degree of gloss, texture, size and shape of the area, lighting, heat or method of application may cause color variance. Contact your Sherwin-Williams representative for details.

ABOUT CHEMICAL RESISTANCE

Sherwin-Williams High Performance Flooring offers a broad range of systems to accommodate nearly every industrial, commercial and institutional setting. Each flooring system includes a standard chemical-resistant topcoat or surface proven to perform under typical conditions.

Important considerations:

- The combination of cleaning solutions, sanitizing chemicals, processing substances and products found in any operational setting is unique.
- Knowing exactly which materials are present — as well as their concentrations and typical exposure times before cleanup — is critical for proper flooring system selection.
- During the specification process, a flooring system’s standard chemical-resistant topcoat may get replaced with one better suited to unique facility conditions.

The ability of a flooring system to perform as designed relies heavily on proper selection. Matching each use case with the right chemical-resistant flooring is key to having a facility looking great and functioning at peak level over the long term.

See our Chemical Resistance Guide and other technical resources on our website. Connect with a Sherwin-Williams High Performance Flooring expert for help with specifying an optimal flooring system for your facility.

TYPICAL PHYSICAL PROPERTIES

Hardness (Shore D), ASTM D-2240	75-80	
Compressive Strength, ASTM D-695	17,500 psi	
Compressive Strength, ASTM C-579	12,500 psi	
Tensile Strength, ASTM D-638	4,000 psi	
Tensile Strength, ASTM C-307	2,600 psi	
Tensile Elongation, ASTM D-638	7.50%	
Flexural Strength, ASTM D-790	6,250 psi	
Flexural Strength, ASTM C-580	4,500 psi	
Flexural Modulus of Elasticity, ASTM D-790	6.2 x 10 <sup>5</sup>	
Linear Expansion, ASTM D-696	2 x 10 <sup>-5</sup>	
Bond Strength to Concrete, ASTM D-4541	400 psi (Substrate Fails)	
Indentation, MIL D-3134	.025 MAX	
Impact Resistance, ASTM D-2794	> 160 inch-lbs	
Water Absorption, ASTM D-570	0.04%	
Heat Resistance Limitation	140°F - 200°F	
Flammability, ASTM D-635	Self-Extinguishing	
Critical Radiant Flux, ASTM E-648	Class I	
Noise Reduction Coefficient, ASTM C-423	0.05	
Taber Abrasion Resistance A&B, ASTM D-4060 (1000 g load, 1000 cycles, CS-17 wheel after full cure)	Gloss Finish w/grit - 4 mg loss no grit -10 mg loss	Satin Finish w/grit - 8 mg loss no grit - 12 mg loss
Static Coefficient of Friction*, ANSI B101.1	> 0.6	
Dynamic Coefficient of Friction - Wet*, ANSI A326.3	> 0.42	
VOC Content	5 g/L	

\*Sherwin-Williams High Performance Flooring systems can be built to meet or exceed the requirements of Static or Dynamic Coefficient of Friction testing per installation. Contact your Sherwin-Williams territory sales manager or tech representative for more information on alternative textures, grit/grip additives, or smooth coatings for your specific environment. A sample should always be obtained and tested prior to purchase for any non-slip flooring system.

THE SHERWIN-WILLIAMS DIFFERENCE

Sherwin-Williams High Performance Flooring delivers world-class industry subject matter expertise, unparalleled technical and specification service, and unmatched regional commercial team support to our customers around the globe.

United States & Canada

sherwin-williams.com/resin-flooring  
swflooring@sherwin.com