



## ST. JOSEPH'S CHURCH PROJECT HIGHLIGHTS

### Location

St. Joseph's Church, Jasper, Indiana

### Scope

Install 14,000 square feet of new terrazzo flooring in a historic building

### Installer

Midwest Terrazzo, Evansville, Indiana

### Designer

Entheos Architects, Indianapolis, Indiana

### System Installed

Resuflor™ Terrazzo TG System with crack-bridging membrane

### Surface Prep

Shotblasted and/or ground to ICRI CSP 3-5

### Membrane

Resuflor™ 3556 High Solids Flexible Epoxy — 100 gallons

### Mortar

Resuflor™ 3520 Terrazzo Binder — 1,100 gallons, combined with custom blends of marble and mother-of-pearl aggregate

### Finish

Polished to a high-gloss finish — 8000 grit

# NEW TERRAZZO FLOORING LEADS HISTORIC CHURCH INTO THE FUTURE



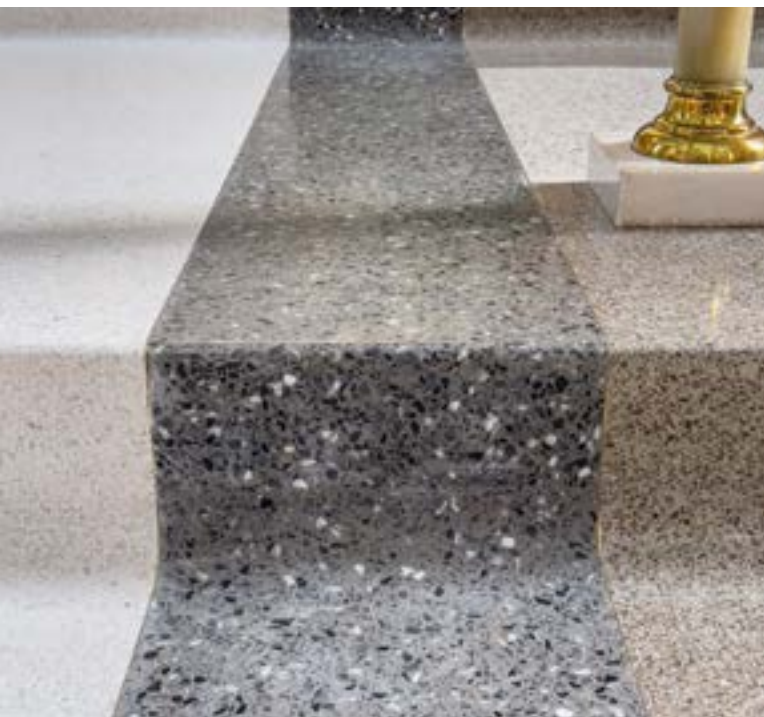
When it came time for the Catholic Diocese of Evansville to renovate the floors in the worship area of St. Joseph's Church, it turned to master artisans, Midwest Terrazzo. With decades of experience handcrafting artistic surfaces for facilities throughout the region, Midwest Terrazzo was capable of creating beautiful terrazzo flooring reflective of the history and significance of the church.

Founded in 1880, St. Joseph's Church is one of 45 parishes that make up the Catholic Diocese of Evansville in Southwest Indiana. As one of the most historic parishes in the country, the church is listed in the U.S National Register of Historic Places. The pressure was on to get this project right.

Midwest Terrazzo had only recently tried Sherwin-Williams High Performance Flooring products for the first time during a period of national shortages when its usual supplier could not accommodate them. However, the specialty contractor quickly became a fan. The team chose to use Sherwin-Williams resinous flooring for the St. Joseph's project, noting that the products' ease of application and outstanding durability, combined with local distribution and excellent service, had now made Resufloor™ Terrazzo TG their go-to system.

Midwest Terrazzo is among the best in highly specialized application processes. The level of skill and numerous artistic touches the team brought to this project can be seen in the photos. It goes without saying that parish members are extremely satisfied with their beautiful new flooring and gratified to see how well the design by Entheos Architects was executed.

"Generations to come will have the opportunity to enjoy the beauty of historic St. Joseph's Church, thanks in part to the newly renovated floors," said owner of Midwest Terrazzo, Graham Wick. "It is nice to see something still around from 1880 that will have decades more use of terrazzo flooring."



## THE SHERWIN-WILLIAMS DIFFERENCE

Sherwin-Williams High Performance Flooring delivers world-class industry subject matter expertise, unparalleled technical and specification service, and unmatched regional commercial team support to our customers around the globe.

### United States & Canada

[sherwin-williams.com/resin-flooring](https://www.sherwin-williams.com/resin-flooring)  
[coatings@sherwin.com](mailto:coatings@sherwin.com)